

DUBAI

IMPORTANT WATCHES

Thursday 19 March 2015



CHRISTIE'S

PATEK PHILIPPE
GENEVE





IMPORTANT WATCHES

Thursday 19 March 2015

CHRISTIE'S

INTERNATIONAL WATCH AUCTIONS

AUCTION CALENDAR 2015

TO INCLUDE YOUR PROPERTY IN THESE SALES PLEASE CONSIGN TEN WEEKS BEFORE THE SALE DATE.
CONTACT THE SPECIALISTS OR REPRESENTATIVE OFFICE FOR FURTHER INFORMATION.

19 MARCH
IMPORTANT WATCHES
DUBAI

11 MAY
IMPORTANT WATCHES
GENEVA

3 JUNE
IMPORTANT WATCHES
HONG KONG

17 JUNE
IMPORTANT WATCHES
NEW YORK

21 OCTOBER
IMPORTANT WATCHES
DUBAI

9 NOVEMBER
IMPORTANT WATCHES
GENEVA

2 DECEMBER
IMPORTANT WATCHES
HONG KONG

16 DECEMBER
IMPORTANT WATCHES
NEW YORK





IMPORTANT WATCHES

AUCTION

Thursday 19 March 2015
at 7.00 pm (Lots 1-185)

To be held at:
Jumeirah Emirates Towers Hotel
Godolphin Ballroom



VIEWING

Jumeirah Emirates Towers Hotel, Godolphin Ballroom

Sunday	15 March	2.00 pm - 10.00 pm
Monday	16 March	11.00 am - 6.00 pm
Tuesday	17 March	11.00 am - 6.00 pm
Wednesday	18 March	10.00 am - 1.30 pm (Paintings) 10.00 am - 10.00 pm (Watches)
Thursday	19 March	10.00 am - 4.00 pm

AUCTIONEER

Thomas Perazzi

AUCTION CODE AND NUMBER

In sending absentee bids or making enquiries, this sale should be referred to as **REM-1238**

AUCTION RESULTS

UK: +44 (0)20 7839 9060
US: +1 212 703 8080
christies.com

CONDITIONS OF SALE

This auction is subject to Important Notices, Conditions of Sale and to reserves.
[60]



Browse this auction and view real-time results on your iPhone, iPod Touch, iPad and Android

These auctions feature

CHRISTIE'S LIVE
Bid live in Christie's salerooms worldwide
register at christies.com

CHRISTIE'S

View catalogues and leave bids online at christies.com





CONTENTS

2	Calendar of Auctions
3	Auction Information
6	Christie's International Watches Department
7	Specialists and Services for this Auction
10	Property for Sale
158	Index
159	Important Notices and Explanation of Cataloguing Practice
160	Buying at Christie's
161	Storage and Collection
162	Conditions of Sale and Limited Warranty
164	Salerooms and Offices Worldwide
177	Absentee Bids Form
178	Catalogue Subscriptions

FRONT COVER:
Lots 114 & 180

INSIDE FRONT COVER:
Lot 114

PAGE TWO:
Lot 158

OPPOSITE:
Lot 86

PAGE SEVEN:
Lot 138

PAGE EIGHT:
Lot 62

INSIDE BACK COVER:
Lot 180

BACK COVER:
Lot 33

PHOTOGRAPHY:
Matthew Lazarus

INTERNATIONAL WATCH DEPARTMENT

INTERNATIONAL HEAD

John Reardon
Tel: +1 212 636 2360

INTERNATIONAL BUSINESS DIRECTOR

Guillaume Guédé
Tel: +33 (0)1 40 76 83 96

CLIENT DEVELOPMENT DIRECTOR

Pansy Ku
Tel: +852 2978 9931

BUSINESS DIRECTOR GENEVA, NEW YORK, DUBAI

Stéphane von Bueren
Tel: +41 (0)22 319 1791

BUSINESS MANAGER NEW YORK

Elisa Catenazzi
Tel: +1 212 636 2329

PRIVATE SALES DIRECTOR

Reginald Brack
Tel: +1 212 974 4538

WATCH SHOP

Tel: +1 212 636 2691
www.christieswatchshop.com

WORLDWIDE

AMSTERDAM

Jessica Koers (Liaison)
Tel: +31 (0)20 575 5915

BANGKOK

Benjawan Uraipraivan
(Liaison)
Tel: +66 (0)2 652 1097

BARCELONA

Carmen Schjaer (Liaison)
Tel: +34 (0)93 487 82 59

BEIJING

Geoffrey Liu
Tel: +86 (0)10 6500 6517

BERLIN

Frederik Schwarz (Liaison)
Tel: +49 (0)175 524 4379

DUBAI

Remy Julia
Tel: +971 (0)4 425 5647

DUSSELDORF

Gudrun Droeghoff (Liaison)
Tel: +49 211 49159322

GENEVA

Thomas Perazzi
Sabine Kegel
Marcello de Marco
Annick Vernet
Barbra Keller
Tel: +41 (0)22 319 1724

HAMBURG

Maike Mueller (Liaison)
Tel: +49 40 279 4073

HONG KONG

Frédéric Watrelot
Mary Lee
Cissy Ngan
Dennis Yu
John Joseph Chan
Tel: +852 2978 9920

ISTANBUL

Eda Kehale Argun (Liaison)
Tel: +90 (532) 558 7514

JAKARTA

Charmie Hamami (Liaison)
Tel: +62 (0)21 7278 6268

KUALA LUMPUR

Lim Meng Hong (Liaison)
Tel: +60 3 6207 9230

LONDON

Mark Bowis (Liaison)
Tel: +44 (0)20 7752 3266

MADRID

Jose Zamoyski (Liaison)
Tel: +34 (0)91 532 6627

MILAN

Lavinia Podestà (Liaison)
Tel: +39 (0)2 30 32 83 22

MUMBAI

Menaka Kumari Shah (Liaison)
Tel: +91 22 2280 7905

MUNICH

Anika Aulbach (Liaison)
Tel: +49 892 420 9680

NEW YORK

John Reardon
Douglas Escibano
Reginald Brack
Rebecca Ross
Tel: +1 212 636 2320

PARIS

Marie-Laurence Tixier (Liaison)
Tel: +33 (0)1 40 76 85 81

ROME

Tiziana Appetiti (Liaison)
Tel: +39 (0)6 686 3341

SHANGHAI

Harriet Yu (Liaison)
Tel: +86 (0)21 6279 8773

SINGAPORE

Wen Li Tang (Liaison)
Tel: +65 6235 3828

SOUTH EAST ASIA

Alexandre Bigler
Tel: +669 0974 4205

STUTTGART

Eva Schweizer (Liaison)
Tel: +49 (0)711 226 9699

TAIPEI

Ada Ong (Liaison)
Nicolette Chou
Tel: +886 2 2736 3356

TOKYO

Yuko Fukagawa (Liaison)
Tel: +81 (0)3 3571 0668

VIENNA

Antonia Cramer (Liaison)
Tel: +43 (0)1 533 88 12 15

ZURICH

Ilona Genoni (Liaison)
Tel: +41 (0)44 268 1023

SPECIALISTS AND SERVICES FOR THIS AUCTION

SPECIALISTS

Rémy Julia
Specialist, Middle East
Tel: +971 (0)4 425 5647
Tel: +971 (0)56 484 0409

Frédéric Watrelot
*Vice President,
Head of Watches, Hong Kong*
Tel: +852 2978 9940
Tel: +852 9863 5058

Dennis Yu
Associate Specialist, Hong Kong
Tel: +852 2978 9965

Stéphane von Bueren
Business Director
Tel: +41 (0)22 319 1791

SALE CONTACTS

Michael Jeha
Managing Director, Middle East
Tel: +971 (0)4 425 5647
From 15-19 March
Tel: +971 (0)4 330 3464

Valérie Hess
Director, Business Development
Tel: +971 (0)4 425 5647
Fax: +971 (0)4 425 5639
From 15-19 March
Tel: +971 (0)4 330 0431
Fax: +971 (0)4 319 8114

Shanti Veigas
Operations Manager
Tel: +971 (0)4 425 5647
Fax: +971 (0)4 425 5639
From 15-19 March
Tel: +971 (0)4 330 0431
Fax: +971 (0)4 319 8114

Zain Talyarkhan
Business Manager, Growth Markets
Tel: +44 (0)20 7389 2438

PRIVATE CLIENT CONTACTS

Isabelle de La Bruyère
*Director, Chairman's Office,
Christie's Europe, Middle East,
Russia and India*
From 15-19 March
Tel: +44 (0)7796 144 044

Julie Vial
*Associate Director,
Client Advisory*
Tel: +44 (0)20 7389 2170
Fax: +44 (0)20 7389 2326
From 15-19 March
Tel: +971 (0)4 330 3464

CONSULTANTS

Dr Alireza Sami-Azar, Iran
Dina Nasser-Khadivi,
International Consultant
Eda Kehale Argün,
Senior Consultant, Turkey
Hayat Shobokshi, Saudi Arabia
Lyne Kaddoura, Beirut
Farah Rahim Ismail, Doha

SERVICES

**ABSENTEE AND
TELEPHONE BIDS**
Tel: +44 (0)20 7389 2658
Fax: +44 (0)20 7930 8870
Internet: www.christies.com
From 15-19 March
Tel: +971 (0)4 330 3462
Tel: +971 (0)4 330 3463
Fax: +971 (0)4 330 0739

CATALOGUES ONLINE
Lotfinder®
Internet: www.christies.com

PAYMENT FOR BUYERS
Tel: +971 (0)4 425 5647
Fax: +971 (0)4 425 5639
From 15-19 March
Tel: +971 (0)4 330 0740
Tel: +971 (0)4 330 0147
Fax: +971 (0)4 319 8113

PAYMENT FOR CONSIGNORS
Tel: +44 (0)20 7389 2586
Fax: +44 (0)20 7581 5295

AUCTION RESULTS
UK: +44 (0)20 7389 9060
US: +1 212 703 8080
Internet: www.christies.com

EMAIL
First initial followed by
last name @christies.com
(e.g. Valerie Hess =
vhess@christies.com)

christies.com





IMPORTANT INFORMATION FOR BUYERS

GENERAL INFORMATION

CHRISTIE'S DUBAI

Tel: + 971 (0)4 425 5647

Fax + 971 (0)4 425 5639

From 15-19 March

Tel: +971 (0)4 330 0431

Fax: +971 (0)4 319 8114

REGARDING THE EXPORT OF WATCH BANDS INCORPORATING MATERIALS FROM ENDANGERED SPECIES

Each lot marked with a (~) symbol has an endangered species strap.

This strap is shown for display only and will be removed and retained prior to shipment. In some cases the strap may be available for collection free of charge from the Christie's Dubai office or may be able to be exported where a CITES export permit can be obtained. Please check with the specialists for more detail.

For further information, please refer to the 'IMPORTANT NOTICES AND EXPLANATION OF CATALOGUING PRACTICE' on page 159.

★ IMPORT DUTY

Buyers of imported objects collected or shipped within the **GCC** (Bahrain, Kuwait, Oman, Qatar, Saudi Arabia, UAE) are subject to a **5% import duty** on the low estimate (identified by the symbol ★ in the catalogue).

For GCC buyers, please note that duty is paid at origin (in Dubai) and not in the importing country. As such, duty paid in Dubai is treated as final duty payment as per GCC's custom laws.

For **non-GCC** buyers, import duty will not apply provided that shipment/delivery is arranged through Christie's shipper. Christie's cannot guarantee that import duty will not be levied should clients choose to arrange delivery through their own carriers.

All objects offered for sale and identified **without** the symbol ★ in the catalogue are duty exempt if bought by and shipped to UAE residents.

In any case, property sold at auction may be subject to import restrictions/taxes of foreign countries. It is the buyers' responsibility to obtain any relevant import licenses into the buyers' own countries of residence.

For further information on Buying at Christie's please see page 160.

COPYRIGHT NOTICE

No part of this catalogue may be reproduced, stored in a retrieval system or transmitted by any form or by any means, electronic, mechanical, photocopying, recording or otherwise, without the prior written permission of Christie's.

© COPYRIGHT, CHRISTIE, MANSON & WOODS LTD. (2015)



•*1

CHOPARD. A FINE GOLD-PLATED POCKET WATCH WITH ALARM

SIGNED CHOPARD, HAPPY DAY MODEL, REF. 51/667-21, CASE NO. 815674, CIRCA 1990

Quartz movement, white dial, Roman numerals, central rotating subsidiary dial for alarm function, square case, crown at 6 o'clock, crown at 12 o'clock for alarm setting, *Chopard case, dial and movement signed* 45 mm. width

US\$1,000-2,000

AED3,700-7,300

•*2

PIAGET. A FINE GILT BRASS AND HAWK'S EYE QUARTZ-SET RECTANGULAR TABLE CLOCK

SIGNED PIAGET, GENEVE, SWISS, CASE NO. 1'836'676, CIRCA 1980

Step by step quartz movement, gilt dial, baton numerals, rectangular case, hawk's eye quartz-set case, back secured by four screws, *Piaget dial and movement signed* 100 mm. width

US\$1,000-2,000 AED3,700-7,300





***3**

ULYSSE NARDIN. AN UNUSUAL GILT BRASS LIMITED EDITION BAROMETER

SIGNED ULYSSE NARDIN, LOCLE SUISSE,
CIRCA 2006

White dial with a calibrated fan-form sector divided in to hPascals and inches, subsidiary temperature dial calibrated for both Fahrenheit and Celcius, gilt brass case within a typical marine chronometer wooden case and suspended, dial signed

Wooden box 170 mm. x 170 mm. x 135 mm.

US\$2,000-3,000 AED7,300-11,000

The present barometer was made to commemorate the 160th anniversary of Ulysse Nardin.

With Ulysse Nardin setting pin, key and outer packing.



•4

A LOT OF TWO STAINLESS STEEL KEYLESS LEVER SPLIT-SECONDS STOPWATCHES

THE FIRST SIGNED OMEGA, THE SECOND SIGNED HEUER, BOTH CIRCA 1980

The *Omega* with keyless lever movement, black dial, Arabic numerals, subsidiary dial for 30 minute register, blackened circular case, two chronograph buttons on band, *Omega dial and movement signed*. The *Heuer* with a keyless lever movement, white dial, Arabic numerals, yellow subsidiary dial for 30 minute register, circular case, two chronograph buttons on band, *Heuer dial and movement signed*

The first 52 mm. diam.;

The second 55 mm. diam.

(2)

US\$1,500-3,000 AED\$5,500-11,000

Both stopwatches with fitted presentation box.

~•5

TAG HEUER. A STAINLESS STEEL SQUARE AUTOMATIC CHRONOGRAPH WRISTWATCH WITH DATE

SIGNED TAG HEUER, MONACO MODEL, REF. CW2113-0, CASE NO. LL1872, CIRCA 2005

Automatic jewelled movement, blue dial, applied baton numerals, two silvered subsidiary dials for constant seconds and 30 minute register, window for date, square case, two chronograph buttons in the band, back secured by four screws, stainless steel *Tag Heuer* deployant clasp, *case dial and movement signed* 38 mm. length.

US\$1,500-2,500

AED\$5,500-9,100

With *Tag Heuer* blank international guarantee, instruction manual, fitted presentation box and outer packaging.



5



•6
**GRAHAM. A LARGE STAINLESS STEEL AUTOMATIC
 DUAL TIME CHRONOGRAPH WRISTWATCH WITH DATE**

SIGNED GRAHAM, CHRONOFIGHTER OVERSIZE GMT MODEL, NO. 266,
 REF. 20VGS B12 A, CIRCA 2006

Cal. G1733 automatic movement, 28 jewels, black dial, applied Arabic and baton numerals, two green subsidiary dials for constant seconds and 30 minute register, central hand for the second time zone, large circular case, black and green bezel calibrated for 24 hours, chronograph button activated through lever in the crown, chronograph reset button at 10 o'clock, back secured by eight screws, large stainless steel *Graham* buckle, *case, dial and movement signed* 45 mm. diam.

US\$3,000–5,000

AED11,000–18,000

With *Graham* certificate of origin and presentation box.



•7
**ULYSSE NARDIN. A LIMITED EDITION STAINLESS STEEL
 AUTOMATIC WRISTWATCH WITH POWER RESERVE AND DATE,
 MADE TO COMMEMORATE THE 41ST ANNIVERSARY OF THE
 UNITED ARAB EMIRATES**

SIGNED ULYSSE NARDIN, MARINE CHRONOMETER MODEL, NO.18/41,
 REF. 263-90-3/72-CEL, MANUFACTURED 2012

UNo26 automatic movement, 28 jewels, black textured dial, applied
 dagger numerals, two silver brushed and engine-turned subsidiary
 dials for power reserve and constant seconds with magnified window
 for date, rotating unidirectional bezel calibrated for 60 units, circular
 water-resistant-type case, screw down crown, glazed display back
 secured by six screws, titanium *Ulysse Nardin* double deployant clasp,
case, dial and movement signed
 45 mm. diam.

US\$3,000–5,000

AED11,000–18,000

With *Ulysse Nardin* Certificate of Limited Edition, Undated International
 Warranty, 3 year Warranty extension, product literature, fitted presentation
 box and outer packaging.



•8
**GIRARD-PERREGAUX. A STAINLESS STEEL LIMITED EDITION
 AUTOMATIC CHRONOGRAPH WRISTWATCH WITH 24 HOUR
 INDICATION AND BRACELET**

SIGNED GIRARD-PERREGAUX. FERRARI 250 TESTAROSSA MODEL,
 NO. 828/2000, REF.8090, CIRCA 1999

Cal. 2280 automatic movement, 57 jewels, black dial, white Arabic
 numerals, three subsidiary dials for 24 hour indication, constant
 seconds and 12 hour register, circular case, two chronograph buttons
 in the band, back secured by eight screws, stainless steel *Girard-
 Perregaux* bracelet and concealed double deployant clasp, *case, dial and
 movement signed*
 39 mm. diam.; overall length approximately 200 mm.

US\$3,000–5,000

AED11,000–18,000

CHOPARD

MILLE MIGLIA



~•9
**CHOPARD. A BLACKENED STAINLESS STEEL LIMITED EDITION
 AUTOMATIC CHRONOGRAPH WRISTWATCH WITH DATE,
 MADE FOR DUBAI**

SIGNED CHOPARD, MILLE MIGLIA GRAND TURISMO XL MODEL, NO. 13/200,
 REF. 1548012, CIRCA 2009

Automatic movement, 25 jewels, black dial, baton indexes, three
 subsidiary dials for constant seconds, 30 minute and 12 hour registers,
 magnified window for date, circular case, two chronograph buttons in
 the band, glazed display back secured by eight screws, blackened stainless
 steel *Chopard* double deployant clasp , case, dial and movement signed
 44 mm. diam.

US\$3,000-5,000

AED11,000-18,000

With *Chopard* Certificate of Origin, Chronometer Certificate, product
 literature, CD, fitted presentation box and outer packaging.



•10
**CHOPARD. A TITANIUM AUTOMATIC CHRONOGRAPH
 WRISTWATCH WITH DATE**

SIGNED CHOPARD, MILLE MIGLIA MODEL, REF. 8407, CASE NO. 796064,
 CIRCA 2003

Automatic jewelled movement, grey textured dial, applied Arabic
 numerals, three silvered engine-turned subsidiary dials for constant
 seconds, 30 minute and 12 hour registers, eccentric aperture for date,
 circular case, two chronograph buttons in the band, glazed display
 back secured by eight screws, titanium *Chopard* buckle, case, dial and
 movement signed
 38 mm. diam.

US\$1,500-2,500

AED5,500-9,100

With *Chopard* fitted presentation box and outer packaging.

Extract of the Archives

Wristwatch

De Ville

2500 (Co-Axial automatic chronometer, certified, sweep-second hand, date)

18K pink gold

Not mentioned

nt No: 60.328.950

ber: Not applicable

f.: BG 168.1848 - PIC 5931.81.00

Blue

a: August 19th. 1999

o: Sweden

This watch was produced as a Limited Edition of 999 pieces and was OMEGA's first commercial introduction of the Co-Axial escapement.

MUSEUM

ember 18th. 2013

ed in our Archives which relates to the watch with the movement number indicated above is mentioned in this extract. t take position on the authenticity of the watch, its components or the materials used in its construction.



~•11

OMEGA. A FINE 18K PINK GOLD LIMITED EDITION AUTOMATIC WRISTWATCH WITH SWEEP CENTRE SECONDS AND DATE

SIGNED OMEGA, DEVILLE MODEL, NO. 35/999, REF. BG 168.1848, CIRCA 1999

Cal. 2500 automatic jewelled movement, silvered midnight blue dial, applied pink gold Roman and baton numerals, sweep centre seconds, window for date, circular case, stepped bezel and lugs, screw back, 18k pink gold Omega deployant clasp, case, dial and movement signed
38 mm. diam.

US\$3,000-6,000

AED11,000-22,000

With Omega extract from the archives and fitted presentation box.

~•12

OMEGA. AN OVERSIZED STAINLESS STEEL WRISTWATCH

SIGNED OMEGA, RAILMASTER CHRONOMETER, SEAMASTER AQUA TERRA MODEL, REF. 28'065'237, CASE NO. 80'800'172, CIRCA 2011

Cal. 2201 mechanical movement, 17 jewels, black dial, luminous Arabic and dagger numerals, subsidiary seconds, oversized circular case, glazed display snap on back, stainless steel Omega deployant clasp, case, dial and movement signed
48 mm. diam.

US\$1,500-2,000

AED5,500-7,300

With Omega International Warranty dated 16 of February 2011, Chronometer Certificate, Pictograms, fitted presentation box and outer packaging.



OMEGA

JAMES BOND LIMITED EDITION

Ω
OMEGA



•13
OMEGA. A STAINLESS STEEL AND CERAMIC LIMITED EDITION AUTOMATIC WRISTWATCH WITH SWEEP CENTRE SECONDS, DATE AND BRACELET, MADE TO COMMEMORATE THE 50TH ANNIVERSARY OF JAMES BOND 007

SIGNED OMEGA, SEAMASTER MODEL, NO. 4209/11007, CIRCA 2012

Cal. 2507 automatic movement, 27 jewels, black 007 dial, sweep centre seconds, window for date, tonneau-shaped water-resistant-type case, revolving bezel calibrated for 60 units, helium escape valve at 10 o'clock, screw down crown, screw back with glazed display with a gun barrel design and bullet decoration on the rotor, stainless steel Omega bracelet and double deployant clasp, case, dial and movement signed

41 mm.; overall length approximately 185 mm.

US\$3,000-5,000

AED11,000-18,000

With Omega Certificate of Authenticity, International Warranty dated 9th of October 2012, sales tag, instruction manual, fitted presentation box and outer packaging.



BREITLING



•14
BREITLING. A FINE STAINLESS STEEL WRISTWATCH WITH SWEEP CENTRE SECONDS DATE AND BRACELET

SIGNED BREITLING, AVENGER SEAWOLF MODEL, REF. A17330110/ F538, CASE NO. 1442054, CIRCA 2013

Automatic jewelled movement, silver dial, applied Arabic, baton and dagger numerals, window for date, sweep centre seconds, oversized tonneau-shaped water-resistant-type-case, revolving bezel calibrated for 60 units, screw back, screw down crown, stainless steel *Breitling* bracelet and buckle, *case, dial and movement signed*

44 mm. diam.; overall length approximately 220 mm.

US\$2,000-3,000

AED7,300-11,000

With *Breitling* International Warranty, Attestation de Chronometre, sales tag, instruction manual, fitted presentation box and outer packaging.



*15

BREITLING. AN OVERSIZED STAINLESS STEEL LIMITED EDITION AUTOMATIC CHRONOGRAPH WRISTWATCH WITH DATE, MADE TO CELEBRATE THE 125TH ANNIVERSARY OF THE NAVITIMER

SIGNED BREITLING, NAVITIMER MODEL, NO. 1447/2009, REF. A26322, CASE NO. 2'269'700, CIRCA 2009

Cal. B26 automatic jewelled movement, brushed brown dial, applied baton numerals, two subsidiary dials for 12 hour register and constant seconds, outer graduation for slide-rule and tachometer scale, calibrated rotating bi-directional bezel, window for date, circular water-resistant type case, two round chronograph button in the band, screw back, stainless steel *Breitling* bracelet and deployant clasp *case, dial and movement signed*

42 mm. diam.; overall length approximately 200 mm.

US\$2,500-5,000

AED9,100-18,000

With *Breitling* International Warranty dated January 2013, Attestation de Chronomètre Officiel, Certificat de serie limitée, product literature, fitted presentation box and outer packaging.

ZENITH

EL PRIMERO



~•16

ZENITH. A FINE STAINLESS STEEL AUTOMATIC TRIPLE CALENDAR CHRONOGRAPH WRISTWATCH WITH MOON PHASES

SIGNED ZENITH, CHRONOMASTER, EL PRIMERO MODEL, REF. 01 0240 410, MOVEMENT. 116'054, CASE NO. 10'193, CIRCA 1998

Cal. 10193 automatic movement, 31 jewels, silvered dial, Roman and triangular numerals, window for date, aperture for day at 10 o'clock, aperture for month at 2 o'clock, three subsidiary dials for constant seconds, 30 minute and 12 hour register confined with moon phases, circular case, stepped bezel, two chronograph buttons in band, glazed display back secured by six screws, stainless steel *Zenith* buckle, case, dial and movement signed 39 mm. diam.

US\$3,000–5,000

AED11,000–18,000

With *Zenith* blank warranty, contrôle officiel Suisse des chronomètres, instruction manual, fitted presentation box and outer packaging.

The present watch is in new old stock condition, still retaining some of its factory protective varnish.

ULYSSE NARDIN



~17

ULYSSE NARDIN. A FINE PLATINUM LIMITED EDITION PERPETUAL CALENDAR WRISTWATCH WITH DUAL-TIME ZONE INDICATION
SIGNED ULYSSE NARDIN, CHRONOMETER GMT PERPETUAL MODEL, NO.02, REF. 329-80, MOVEMENT NO 32.16.0330, CIRCA 1995

Cal. UN32 automatic movement, 34 jewels, silvered textured dial, applied baton numerals, outer raised ring for second time zone with central hand, engine-turned subsidiary dial for seconds with window for day, window for month at 3 o'clock, double aperture for date at 1 o'clock, double aperture for year at 6 o'clock, circular case, two buttons in the band at 4 and 8 o'clock for hour hand setting, glazed display back secured by six screws, platinum *Ulysse Nardin* deployant buckle, *case, dial and movement signed*
40 mm. diam.

US\$7,000-10,000

AED26,000-36,000

With *Ulysse Nardin* fitted presentation box and outer packaging.



~18

ULYSSE NARDIN. A FINE AND UNUSUAL 18K WHITE GOLD AUTOMATIC DUAL TIME WRISTWATCH WITH SWEEP CENTRE SECONDS, DATE, MUSICAL ALARM AND COUNTDOWN INDICATION
SIGNED ULYSSE NARDIN, SONATA CATHEDRAL DUAL TIME MODEL, NO. 984, REF. 670-88, CIRCA 2004

Cal. UN-67 automatic movement, 109 jewels, silvered two-tone dial with applied dagger numerals, pierced yellow steel hands with luminous tips, three engine-turned subsidiary dials for dual time, alarm setting and countdown indication for alarm, on/off alarm indicator, double aperture for date, circular case, fluted downturned lugs, crown at 3 o'clock to wind/set time and alarm, crown at 9 o'clock to set the date and on/off alarm indicator, time zone pushers at 4 and 8 o'clock to set the hour hand, case back secured by six screws, 18k white gold *Ulysse Nardin* double deployant clasp, *case, dial and movement signed*
42 mm. diam.

US\$20,000-30,000

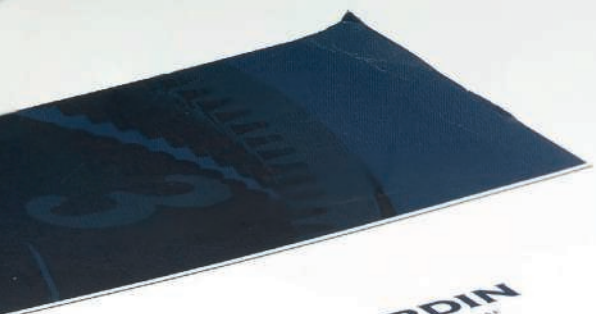
AED73,000-110,000

With *Ulysse Nardin* International warranty card, instruction manual, fitted presentation box and outer packaging.

Sonata

CATHEDRAL DUAL TIME

ULYSSE NARDIN
SINCE 1846  LE LOCLE - SUISSE



 **NARDIN**
Le Locle - Suisse

 **NARDIN**
Case No 984
Cosc. No

E. FIORENTINO S.p.A.

WARRANTY &
MANUAL

BOVET

SPORTSTER



~•19

BOVET. AN OVERSIZED 18K GOLD AUTOMATIC CHRONOGRAPH WRISTWATCH WITH DATE AND MOTHER-OF-PEARL DIAL

SIGNED BOVET, SPORTSTER MODEL, REF. C800, CASE NO. 004093, CIRCA 2010

Cal. 2109 automatic movement, 28 jewels, mother-of-pearl dial, Arabic numerals, double window for date, three subsidiary dials for constant seconds, 30 minute and 12 hour registers, circular case, crown at 12 o'clock, two rectangular chronograph buttons in the band, glazed display screw back, 18k pink gold *Bovet* deployant clasp, *case, dial and movement signed* 40 mm. diam.

US\$6,000–8,000

AED22,000–29,000

With a *Bovet* fitted winding presentation box and outer packaging.

CARTIER

PASHA



~*20

CARTIER. AN 18K GOLD WRISTWATCH WITH SWEEP CENTRE SECONDS, ALARM, DATE AND MOON PHASES

SIGNED CARTIER, PASHA MODEL, REF. 30011, CASE NOS. 1990 AND T 100452, CIRCA 1990

Quartz jewelled movement, blue dial, Roman and dot numerals on silvered chapter ring, sweep centre seconds, subsidiary dial for date, sector for moon phases, alarm indicated by central hand and inner ring, aperture for alarm on/off indication, circular case, cabochon sapphire-set protective crown cap, crown for alarm setting and winding and button for alarm on/off on request in the band, back secured by eight screws, 18k gold *Cartier* deployant buckle, *case, dial and movement signed*
38 mm. diam.

US\$5,000–7,000

AED19,000–25,000



~*21

CARTIER. A STAINLESS STEEL WRISTWATCH WITH DATE

SIGNED CARTIER, PASHA SEATIMER MODEL, CASE NO. R4010705, CIRCA 2000

Automatic jewelled movement, white dial, applied Roman and gold dot numerals, eccentric window for date, circular case, unidirectional rotating bezel graduated for 60 units, sapphire-set crown, screw down protective crown cap, back secured by 8 screws, stainless steel *Cartier* buckle, *case, dial and movement signed*
36 mm. diam.

US\$2,000–3,000

AED7,300–11,000

With *Cartier* fitted presentation box.



•*22
CARTIER. A LADY'S 18K GOLD AND DIAMOND-SET WRISTWATCH WITH BRACELET

SIGNED CARTIER, RIVOLI MODEL, CASE NO. 810'920'707, CIRCA 1990

Quartz movement, white dial, Roman numerals, circular case, pavé-set diamond bezel and lugs, diamond-set crown, back secured by two screws, 18k gold *Cartier* bracelet and deployant clasp, *case dial and movement signed*
23 mm. diam.; overall length approximately 160 mm.

US\$3,000–5,000 AED11,000–18,000



•*23
CHOPARD. A FINE LADY'S 18K GOLD, DIAMOND AND RUBY-SET BRACELET WATCH

SIGNED CHOPARD, GENEVE, REF. G 4442 1, CASE NOS. 189926 AND 4053 1, CIRCA 1990

Quartz jewelled movement, pavé-set-diamond dial, circular case, diamond-set bezel, ruby and diamond-set ends, snap on back, 18k gold *chopard* bracelet and buckle, *case, crystal on case, and movement signed*
23 mm. width; overall length approximately 180 mm.

US\$3,000–5,000 AED11,000–18,000



•*24
CHOPARD. AN 18K GOLD, STAINLESS STEEL AND DIAMOND-SET WRISTWATCH WITH DATE AND BRACELET

SIGNED CHOPARD, GENEVE, GSTAAD MODEL, REF. 32/8116, CASE NO. GD5095 8112, CIRCA 1990

Quartz jewelled movement, applied Roman and dot numerals, window for date, tonneau-shaped case, pavé-set diamond bezel, back secured by 6 screws, 18k gold and stainless steel *Chopard* concealed double deployant clasp, *case, dial and movement signed*
24 mm. diam.; overall length approximately 150 mm.

US\$2,000–3,000 AED7,300–11,000



25

•*25

GERALD GENTA. A LADY'S 18K GOLD AND STAINLESS STEEL WRISTWATCH WITH MOTHER-OF-PEARL DIAL AND BRACELET

SIGNED GERALD GENTA, DISNEY, MINNIE MOUSE MODEL, NO. 10, REF. 3338.7, CASE NO. 6'396, CIRCA 1997

Quartz movement, mother of pearl dial, the arms of Minnie Mouse indicating the minute and the hour, dot numerals, faceted crystal, circular case, snap on back, stainless steel *Gerald Genta* bracelet and deployant clasp, *case dial and movement signed* 23 mm. diam.; overall length approximately 165 mm.

US\$1,000–2,000

AED3,700–7,300

With *Gerald Genta* blank International Warranty, sales tag, fitted presentation box and outer packaging



26

•Φ*26

CARTIER AND ROLEX. A LOT OF TWO WRISTWATCHES

THE FIRST SIGNED CARTIER, COUGAR MODEL, REF. 887904C, CASE NO. 003956, CIRCA 1985, THE SECOND SIGNED ROLEX, DATEJUST MODEL, REF. 69174, CASE NO. T907108, CIRCA 1996

The *first* with quartz jewelled movement, the *second* with Cal. 2135 automatic movement, 29 jewels, the *first* with silvered dial, gold roman numerals, window for date, sweep centre seconds, the *second* with white dial, Roman numerals, magnified window for date, sweep centre seconds, the *first* with circular case, screwed bezel secured by eight screws, sapphire-set crown, back secured by eight screws, the *second* with circular case, fluted bezel, screw down crown, screw back, the *first* with stainless steel *Cartier* bracelet and concealed double deployant clasp, the *second* with a stainless steel *Rolex Jubilee* bracelet and deployant clasp, *both cases, dials and movements signed* The *first* 32 mm. diam.; overall length of approximately 170 mm, the *second* 25 mm. diam.; overall length approximately 140 mm.

US\$2,500–3,800

AED9,100–14,000

ROLEX

DATEJUST REF.1503



~•Φ*27

ROLEX. A FINE 18K GOLD AUTOMATIC WRISTWATCH WITH SWEEP CENTRE SECONDS AND DATE

SIGNED ROLEX, OYSTER PERPETUAL, DATEJUST MODEL, REF. 1503, CASE NO. 4'156'675, CIRCA 1975

Cal. 1570 automatic movement, 26 jewels, black dial, applied gold baton numerals, sweep centre seconds, magnified window for date, tonneau-shaped water-resistant-type case, fluted bezel, screw down crown, screw back, 18k gold *Rolex* buckle, case, dial and movement signed 35 mm. diam.

US\$3,000–5,000

AED11,000–18,000

With *Rolex* invoice for overhaul and gasket signed 23 of July 1998 and fitted pouch.

ROLEX

DAY-DATE REF. 18238



Φ28

ROLEX. A VERY FINE AND ELEGANT 18K GOLD AUTOMATIC WRISTWATCH WITH SWEEP CENTRE SECONDS, DATE, MOTHER-OF-PEARL DIAL AND BRACELET

SIGNED ROLEX, OYSTER PERPETUAL, DAY-DATE MODEL, REF. 18238, CASE NO. E348341, CIRCA 1990

Cal. 3155 automatic movement, 31 jewels, mother-of-pearl dial, applied gold Roman numerals, magnified window for date, sweep centre seconds, circular case, fluted bezel, screw down crown, screw back, 18k gold *Rolex President* bracelet and concealed deployant clasp, *case, dial and movement signed*

36 mm. diam.; overall length approx. 190 mm.

US\$12,000-18,000

AED44,000-65,000

With Rolex Attestation de Chronomètre officiel, fitted presentation box and outer packaging.

ROLEX



•Φ29

ROLEX. A STAINLESS STEEL AUTOMATIC ANTI-MAGNETIC WRISTWATCH WITH SWEEP CENTRE SECONDS AND BRACELET

SIGNED ROLEX, OYSTER PERPETUAL, MILGAUSS MODEL, REF. 116400, CASE NO. M212286, CIRCA 2007

Cal. 3131 automatic movement, 31 jewels, black dial, baton numerals, orange lightning sweep-centre seconds, tonneau-shaped-water-resistant type case, screw down crown, screw back, stainless steel Rolex Oyster bracelet and deployant clasp, *case, dial and movement signed* 40 mm. diam.; overall length approximately 190 mm.

US\$3,000-5,000

AED11,000-18,000



•Φ30

ROLEX. A STAINLESS STEEL AUTOMATIC WRISTWATCH WITH SWEEP CENTRE SECONDS, DATE AND BRACELET

SIGNED ROLEX, OYSTER PERPETUAL DATE, SUBMARINER MODEL, REF. 16800, CASE NO. 9'302'877, CIRCA 1986

Cal. 3035 automatic movement, 27 jewels, black dial, luminous dots, baton and dagger numerals, sweep centre seconds, magnified window for date, tonneau-shaped water-resistant type case, revolving bezel calibrated for 60 units, screw down crown, screw back, *case dial and movement signed*

39 mm. diam.; overall length approximately 185 mm.

US\$4,000-6,000

AED15,000-22,000

With original stainless steel Rolex Oyster bracelet and deployant clasp.

Always searching to build professional watches able to sustain harsh conditions, year 1967 saw the launch of the Rolex Oyster Perpetual Sea-Dweller. Engineered to meet the needs of professional deep-sea divers, the watch was waterproof to a depth of 610 meters and fitted with a helium escape valve, preventing damages to the watch during decompression phases in hyperbaric chambers.

ROLEX

SEA-DWELLER



Φ31

ROLEX. A STAINLESS STEEL AUTOMATIC WRISTWATCH WITH SWEEP CENTRE SECONDS, DATE AND BRACELET

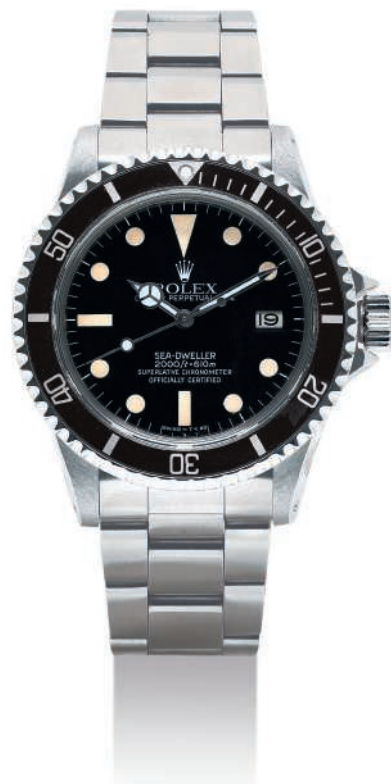
SIGNED ROLEX, OYSTER PERPETUAL DATE, SEA-DWELLER MODEL, REF. 16600, CASE NO. M564496, CIRCA 2008

Cal. 3135 automatic movement, 31 jewels, black dial, luminous dot, baton and dagger numerals, sweep centre seconds, window for date, tonneau-shaped water-resistant type case, revolving bezel calibrated for 60 units, gas escape valve in the band, screw down crown, screw back engraved *Rolex Oyster Original Gas Escape Valve*, stainless steel *Rolex Oyster* bracelet and deployant clasp, *case, dial and movement signed* 39 mm. diam.; overall length approximately 190 mm.

US\$3,000–5,000

AED11,000–18,000

With *Rolex Garantie Internationale* dated 22nd of March 2011, sales tag, pouch and fitted presentation box.



Φ32

ROLEX. A RARE STAINLESS STEEL AUTOMATIC WRISTWATCH WITH SWEEP CENTRE SECONDS, DATE AND BRACELET

SIGNED ROLEX, OYSTER PERPETUAL DATE, SEA-DWELLER MODEL, REF. 1665, CASE NO. 6'751'964, CIRCA 1980

Cal. 1570 T automatic movement, black dial, luminous dot, baton and dagger numerals, sweep centre seconds, window for date, tonneau-shaped water-resistant-type case, revolving bezel calibrated for 60 units, gas escape valve in the band, screw down crown, screw back engraved *Rolex Patent Oyster Gas Escape Valve*, stainless steel *Rolex Oyster* bracelet and deployant clasp, *case, dial and movement signed* 39 mm. diam.; overall length approximately 110mm.

US\$7,000–11,000

AED26,000–40,000

With *Internationale Service Garantie* dated 03 November 2008.



Telephone: 01322 625400
Fax: 01322 659434

ROLEX UK
Bexley Office
Heathend Road
Bexley, Kent
DA5 2AA

Our ref: HH/rl



8th May 2008

Model 5513/0 – Serial no. 3926836

We acknowledge safe receipt of your double reference steel Rolex Submariner model 5513/17, serial number 3926836 bearing the military markings 0552/923-7697 666/77.

From our records we can confirm that this Military Submariner was supplied to H.M. Dockyard Devonport in June 1977.

We trust you find this information of help and interest.

Yours sincerely

H.N. Hudson

General Manager



ROLEX

"MILSUB" REF. 5513/5517

This "Milsub" reference 5513 reveals the best of all ingredients this landmark model can possibly offer to the avid collector. The untouched dial is graced by the highly attractive discolouration of the luminous material to numerals and hands displaying a beautiful, uniform ivory tone.

The case has evidently never been exposed to careless polishing and impresses with its full body and sharp angles to the facets of the lugs. Both the reference and serial numbers finely engraved between the lugs are clearly legible and repeated to the inside of the back cover, as the connoisseur would expect.

The bezel is the correct version featuring minute markings, unique for the military Submariner series.

The excellent original overall condition render this "Milsub" one of the most attractive examples of this legendary model to appear in public in recent years.

The Military version of the Submariner ref. 5513 was adapted following the specifications requested by the British Ministry of Defence. The watches had to be fitted with fixed bar lugs with a diameter of at least 2 mm. The dials had to be easily readable and were therefore equipped with the larger "sword" hands. They also had to show the international symbol for Tritium, the encircled "T". The hack feature allowing the precise setting of the time was another specific request. The models furthermore had a unique bezel with sixty minute marks rather than only the first fifteen minutes. The outside of the case backs were marked with the military broad arrow sign, Ministry of Defence issue numbers and unit number. Furthermore the inside of the case backs repeated the serial number which is commonly only found between the lugs.

The outside of the case back of the present watch is engraved with the following markings:

0552 for British Ministry of Defence, 923-7697 for the NATO code, the Broad Arrow characterizing all watches owned by the British Army, the issue number 666 and issue year 77.



ROLEX

"MILSUB" REF. 5513/5517



THE PROPERTY OF AN IMPORTANT EUROPEAN PRIVATE COLLECTOR

Φ*33

ROLEX. A VERY RARE AND ATTRACTIVE STAINLESS STEEL AUTOMATIC WRISTWATCH WITH SWEEP CENTRE SECONDS, HACK FEATURE AND MILITARY MARKINGS, MADE FOR THE BRITISH ROYAL NAVY, WITH ROLEX UK BEXLEY OFFICE LETTER, INTERNATIONAL SERVICE GUARANTEE AND SERVICE INVOICE

SIGNED ROLEX, OYSTER PERPETUAL, 660FT=200M, SUBMARINER MODEL, REF. 5513/17, CASE NO. 3'926'836, SUPPLIED TO H.M. DOCKYARD DEVONPORT IN JUNE 1977

Cal. 1520 automatic movement, 26 jewels, black dial with encircled "T" indicating the use of Tritium, luminous dot, baton and dagger numerals, luminous sword hands, luminous sweep centre seconds, tonneau-shaped water-resistant-type case, black revolving bezel calibrated for 60 units, fixed bar lugs, screw back with military issue numbers 0552/923-7697 and unit number 666/77, screw down crown, *case, dial and movement signed*
39 mm. diam.

US\$120,000–220,000

AED440,000–800,000

With Rolex UK Bexley Office original letter dated 8 May 2008 signed by H.N. Hudson confirming that the present watch was supplied to H.M. Dockyard Devonport in June 1977. Furthermore delivered with Rolex International Service Guarantee, Rolex Australia Tax Invoice No. 70987 for the servicing of the movement of the watch, both dated 31 January 2014, Rolex presentation box and outer packaging.

ROLEX

"STEVE MCQUEEN" REF. 1655



•Φ*34

ROLEX. A FINE STAINLESS STEEL AUTOMATIC WRISTWATCH WITH SWEEP CENTRE SECONDS, 24 HOUR HAND, DATE AND BRACELET

SIGNED ROLEX, EXPLORER II MODEL, REF. 1655, CASE NO. 3'181'541, CIRCA 1970

Cal.1570 automatic movement, 26 jewels, black dial, applied dagger and Arabic numerals, sweep centre seconds, magnified window for date, orange central luminous 24 hour hand, tonneau-shaped-water-resistant type case, bezel calibrated for 24 hours, screw down crown, screw back, stainless steel *Rolex Oyster* bracelet and deployant clasp, *case, dial and movement signed*

39 mm. diam.; overall length approximately 180 mm.

US\$7,000–12,000

AED26,000–44,000

With *Rolex International Service Guarantee* dated 17 January 2007, invoice for overhaul and fitted presentation box.

CARTIER

DRIVER LIMITED EDITION



~•*35

CARTIER. A FINE 18K WHITE GOLD RECTANGULAR WRISTWATCH

SIGNED CARTIER, PARIS, DRIVER MODEL, NO. 10/150, CIRCA 1997

Mechanical jewelled movement, silvered dial with textured centre, Roman numerals, rectangular case, winding crown on case back, case secured by four screws on band, 18k white gold *Cartier* deployant clasp, *case, dial and movement signed*
34 mm. length

US\$4,000–6,000

AED15,000–22,000

With *Cartier* fitted pouch.

ROLEX



Φ*36

ROLEX. A LADY'S FINE AND RARE 18K WHITE GOLD AND DIAMOND-SET SQUARE BRACELET WATCH WITH GAY FRÈRES SIGNED BRACELET

SIGNED ROLEX, GENEVE, REF. 627, CASE NO. 13905, CIRCA 1950

Mechanical jewelled movement, blue lacquer dial, applied baton numerals, square case, diamond-set bezel, snap on back, 18k white Gold *Gay Frères* bracelet, *case, dial and movement signed*
23 mm. width; overall length approximately 150 mm.

US\$5,000-7,000

AED19,000-25,000



•Φ*37

ROLEX. A FINE AND ELEGANT LADY'S 18K GOLD WRISTWATCH WITH BRACELET

SIGNED ROLEX, PRECISION MODEL, CASE NO. 2'488'728, CIRCA 1967

Cal. 1400 mechanical movement, 18 jewels, champagne dial, Roman numerals, circular case, 18k gold *Rolex* bracelet, *case, dial and movement signed*

21 mm. diam.; overall length approximately 150 mm.

US\$3,000-5,000

AED11,000-18,000

ROLEX

CELLINI



~Φ*38

ROLEX. A LADY'S 18K WHITE GOLD AND DIAMOND-SET WRISTWATCH

SIGNED ROLEX, GENEVE, CELLINI MODEL, REF. 6683, CASE NO. K652045, CIRCA 2001

Cal. 6620, quartz movement, 8 jewels, silvered *Rolex* dial, diamond-set numerals, circular case, pavé-set diamond bezel and lug ends, snap on back, 18k white gold *Rolex* deployant clasp, *case, dial and movement signed*
33 mm. width

US\$3,000–5,000

AED11,000–18,000

With *Rolex* fitted presentation box and outer packaging.



Φ*39

ROLEX. A LADY'S FINE 18K WHITE GOLD WRISTWATCH WITH BRACELET

SIGNED ROLEX, GENEVE, CELLINI MODEL, REF. 6622, CASE NO. X606976, CIRCA 1990

Quartz movement, 8 jewels, salmon brushed dial, applied Roman numerals, circular case, stepped bezel, hinged lugs, snap on back, 18k white gold *Rolex* bracelet and deployant clasp, *case, dial and movement signed*
33 mm. diam.; overall length approximately 185 mm.

US\$5,000–7,000

AED19,000–25,000

PIAGET

TANAGRA



~•*40

PIAGET. A LADY'S FINE 18K GOLD AND DIAMOND-SET WRISTWATCH WITH TWO-TONE DIAL

SIGNED PIAGET, TANAGRA MODEL, REF. 95'043, MOVEMENT NO. 9'106'751, CASE NO. 568'395, CIRCA 1990

Cal. 9P2, mechanical movement, 18 jewels, two-tone gold dial, applied dot numerals, circular case, diamond-set ribbed bezel, back secured by four screws, 18k gold *Piaget* buckle, *case, dial and movement signed*
33 mm. diam.

US\$4,000-6,000

AED15,000-22,000



~•*41

PIAGET. A LADY'S 18K WHITE GOLD WRISTWATCH WITH TWO-TONE DIAL

SIGNED PIAGET, TANAGRA MODEL, REF. 95241, MOVEMENT NO. 9'308'702, CASE NO. 610928, CIRCA 1990

Cal. 9P2, mechanical movement, 18 jewels, two tone silver dial, applied Roman numerals, circular case, ribbed bezel, back secured by four screws, 18k white gold *Piaget* buckle, *case, dial and movement signed*
33 mm. diam.

US\$4,000-6,000

AED15,000-22,000

PIAGET

POLO KEY DIVE 18K



*42

PIAGET. AN 18K TWO COLOUR, GOLD AUTOMATIC WRISTWATCH WITH SWEEP CENTRE SECONDS, DATE AND BRACELET

SIGNED PIAGET, CHRONOMETRE 200M, POLO KEY DIVE MODEL, REF.25020 M551D, CASE NO. 812'192, CIRCA 1995

Automatic jewelled movement, silver brushed dial, applied Arabic and dagger numerals, sweep centre seconds, magnified window for date, circular case, revolving two-colour gold bezel calibrated for 60 units, back secured by six screws, screw down crown, 18k white gold *Piaget* bracelet and concealed double deployant clasp, *case, dial and movement signed* 38 mm. diam.; overall length approximately 180 mm.

US\$6,000–8,000

AED22,000–29,000

ROLEX

GMT-MASTER REF. 1675



Φ43

ROLEX. A FINE AND RARE 18K GOLD AUTOMATIC DUAL-TIME WRISTWATCH WITH SWEEP CENTRE SECONDS, DATE AND BRACELET

SIGNED ROLEX, OYSTER PERPETUAL, GMT-MASTER MODEL, REF. 1675, CASE NO. 5'954'688, CIRCA 1979

Cal. 1570 automatic movement, 26 jewels, black dial, luminous dot, baton and dagger numerals, sweep centre seconds, central hand for the second time zone, magnified window for date, tonneau-shaped water-resistant type case, revolving bezel calibrated for 24 hours, screw down crown, screw back, 18k gold *Rolex Jubilee* bracelet and concealed deployant clasp, *case, dial and movement signed*

39 mm. diam.; overall length approximately 190 mm.

US\$8,000–12,000

AED30,000–44,000



•Φ*44

ROLEX. A LADY'S FINE 18K GOLD SQUARE BRACELET WATCH

SIGNED ROLEX, PRECISION MODEL, CASE NO. 1'104'262, CIRCA 1960

Mechanical jewelled movement, champagne dial, applied baton numerals, square case, snap on back, 18k gold *Rolex* bracelet, case, dial and movement signed
16 mm diam. Overall length approximately. 175 mm.

US\$3,000–5,000

AED11,000–18,000

With *Rolex* outer packaging and fitted presentation box.

ROLEX

GMT-MASTER REF. 16718



Φ45

ROLEX. AN 18K GOLD AUTOMATIC DUAL TIME WRISTWATCH WITH SWEEP CENTRE SECONDS, DATE AND BRACELET

SIGNED ROLEX, OYSTER PERPETUAL DATE GMT-MASTER II MODEL, REF. 16718, CASE NO. N281346, CIRCA 1991

Cal. 3185 automatic movement, 31 jewels, brushed brown dial, dot, baton and dagger numerals, central hand for the second time zone, sweep centre seconds, magnified window for date, tonneau-shaped water-resistant-type case, revolving brown and gilt bezel calibrated for 24 hours, screw down crown, screw back, 18k gold *Rolex Jubilee* bracelet and concealed deployant clasp *case, dial and movement signed* 39 mm. diam.; overall length approximately 190 mm.

US\$8,000-12,000

AED30,000-44,000

With *Rolex* leather notepad, fitted presentation box and outer packaging.

Φ*46

**ROLEX. A LADY'S FINE AND RARE 18K GOLD SQUARE BRACELET
WATCH WITH CONCEALED DIAL**

SIGNED ROLEX, PRECISION MODEL, REF. 8901, CASE. 10757, CIRCA 1950

Mechanical movement, 17 jewels, silvered dial, applied gold baton
numerals, square case, dial concealed under an 18k gold textured
hinged cover, snap on back, 18k gold *Rolex* textured bracelet, *case,*
dial and movement signed

23 mm. width; overall length approximately 180 mm.

US\$8,000-12,000

AED30,000-44,000

ROLEX
PRECISION



VACHERON CONSTANTIN

HARMONY



•47

VACHERON CONSTANTIN. A FINE 18K GOLD RECTANGULAR BRACELET WATCH

SIGNED VACHERON CONSTANTIN, HARMONY MODEL, REF. 70205, MOVEMENT NO. 735'476, CASE NO. 560'579, CIRCA 1980

Quartz jewelled movement, two-tone gilt dial, rectangular case, back secured by six screws, 18k gold *Vacheron constantin* bracelet, case, dial and movement signed 23 mm. width; overall length approximately 190 mm.

US\$4,000-6,000

AED15,000-22,000

With extract from the *Vacheron Constantin* archives confirming production year 1982.

VACHERON CONSTANTIN

TURBAN



*48

**VACHERON CONSTANTIN. AN 18K GOLD AND DIAMOND-SET
PEAR-SHAPED BRACELET WATCH**

SIGNED VACHERON CONSTANTIN, TURBAN MODEL, REF. 27601 / 143 J-7,
CASE NO. 634377, CIRCA 2000

Quartz movement, champagne dial, 18k gold dot numerals,
diamond-set bezel engraved *Vacheron Constantin*, pear-shaped case,
back secured by eight screws, 18k gold *Vacheron Constantin* bracelet
and double deployant clasp, *case, dial and movement signed*
25 mm. length.; overall in length of bracelet approximately 180 mm.

US\$7,000-12,000

AED26,000-44,000

With *Vacheron Constantin* fitted pouch.

CORUM



~•49

CORUM. A FINE 18K GOLD SKELETONISED WRISTWATCH

SIGNED CORUM, ROMVLVS MODEL, REF. 255.901.56, CASE NO. 557138, CIRCA 2000

Mechanical jewelled movement, skeletonized dial, chapter ring inscribed with *Corum invenit et solum centena exemplaria fecit No. XLVI*, bezel with engraved roman numerals, glazed display back secured by six screws, 18k gold Corum buckle, case, dial and movement signed 32 mm. diam.

US\$4,000-6,000

AED15,000-22,000



•*50

CORUM. A STAINLESS STEEL AUTOMATIC WRISTWATCH WITH DATE AND BRACELET

SIGNED CORUM, ADMIRALS CUP MODEL, REF. 88.810.27 V350, CASE NO. 551348, CIRCA 2000

Quartz jewelled movement, cream dial, applied multi coloured flags as numerals, central hand for date, circular case, back secured by four screws, stainless steel Corum bracelet and concealed double deployant clasp, case, dial and movement signed

38 mm. width; overall length approximately 190 mm.

US\$1,000-2,000

AED3,700-7,300



•*51
TIFFANY & CO. AN 18K GOLD DUAL-TIME TONNEAU-SHAPED WRISTWATCH

SIGNED TIFFANY & CO, DUO DUAL TIME MODEL, REF. M163, CIRCA 2000

Quartz movement, two-tone silver dial, Roman numerals, subsidiary dial for second time zone, tonneau-shaped case, winding crown at 12 o'clock for first time zone and winding crown at 6 o'clock for second time zone, snap on back, all pivoting within the backplate, 18k gold *Tiffany & Co* buckle, *case, dial and movement signed* 34 mm. length.

US\$2,000-3,000

AED7,300-11,000

With *Tiffany & Co* fitted pouch, presentation box an outer packaging.



~•52
PATEK PHILIPPE. AN 18K GOLD OVAL WRISTWATCH

SIGNED PATEK PHILIPPE, GENÈVE, ELLIPSE MODEL, REF. 3848, MOVEMENT NO. 1'337'212, CASE NO. 2'852'322, CIRCA 1990

Cal. 215 mechanical movement stamped with the Geneva seal, 18 jewels, blue brushed dial, applied 18k gold baton numerals, oval case, snap on back, concealed lugs, 18k gold *Patek Philippe* buckle, *case, dial and movement signed* 32.5 mm. length

US\$4,000-6,000

AED15,000-22,000

VULCAIN

EPHAISTOS NO.1/28



~*53

VULCAIN. A FINE 18K PINK GOLD LIMITED EDITION WORLTIME WRISTWATCH WITH SWEEP CENTRE SECONDS, ALARM AND CLOISSONNÉ ENAMEL DIAL

SIGNED VULCAIN, AVIATOR GMT EPHAISTOS MODEL, NO.1/28, REF. 100508.050, CIRCA 2010

Cal. V-13 mechanical movement, 17 jewels, polychrome cloisonné enamel dial, dot numerals, silver brushed 24-hour ring for the alarm, outer revolving ring with the names of 24 world cities, sweep centre seconds, central hand for the alarm, circular case, screw down crown at 4 o'clock to adjust cities, push button at 2 o'clock to set the alarm, snap on back, 18k pink gold *Vulcain* buckle, *case, dial and movement signed* 43 mm. diam.

US\$7,000-11,000

AED26,000-40,000

With *Vulcain* fitted presentation box and outer packaging.

•54

ZODIAC. A LOT OF THREE 18K GOLD AUTOMATIC WRISTWATCHES WITH SWEEP CENTRE SECONDS, DATE AND LACQUERED DIALS

SIGNED ZODIAC, REF. 726 322, THE FIRST, CASE NO. 578843, THE SECOND CASE NO. 578732, THE THIRD CASE NO. 876847, CIRCA 1980

Automatic movements, *the first* with green lacquer dial, *the second* with black lacquer dial, *the third* with champagne dial, all with applied baton numerals, window for date, circular case, snap on back, Zodiac buckles, case, dial and movement signed 34 mm. diam.

US\$4,500-8,000

AED17,000-29,000

All with Zodiac sales tag.



CHOPARD

URUSHI

~55

CHOPARD. A VERY FINE 18K PINK GOLD AUTOMATIC WRISTWATCH WITH JAPANESE LACQUER DIAL

SIGNED CHOPARD, ARTIST KIICHIRO MASUMURA WITH YAMADA HEIANDO, L.U.C XP URUSHI MODEL, REF. 161902-5055, CASE NOS. 1878290 - 1902, CIRCA 2012

Cal. L.U.C. 96.17-L automatic movement, 29 jewels, Japanese lacquer dial with bamboo and unyielding plant, circular case, glazed display back secured by eight screws, 18k pink gold *Chopard* buckle case, dial and movement signed 39.5 mm. diam.

US\$13,000-15,000

AED48,000-55,000



JAUQUET DROZ

UAE LIMITED EDITION 8/10



-56

JAUQUET DROZ. A FINE AND RARE 18K WHITE GOLD LIMITED EDITION AUTOMATIC WRISTWATCH WITH OFF-CENTERED TIME DISPLAY, MADE FOR THE UNITED ARAB EMIRATES

SIGNED JAUQUET DROZ, GRANDE SECONDE MODEL, NO. 8/10, REF. J0030342XX, CIRCA 2004

Cal. 2663.4 automatic movement, 30 jewels, gilt dial with United Arab Emirates emblem, eccentric hour display with Roman numerals, large subsidiary seconds, circular case, glazed display snap on back, 18k white gold Jaquet Droz buckle case, dial and movement signed 43 mm. diam.

US\$7,000-10,000

AED26,000-36,000

With Jaquet Droz undated Certificat de Garantie, instruction manual, fitted presentation box and outer packaging.

BLANCPAIN

LEMAN



•57

BLANCPAIN. AN 18K PINK GOLD LIMITED EDITION AUTOMATIC TRIPLE CALENDAR WRISTWATCH WITH MOON PHASES

SIGNED BLANCPAIN, LEMAN CALENDAR MODEL, NO.260/300, REF. 2763, CIRCA 1998

Automatic jewelled movement, black brushed dial, applied baton, Arabic and Roman numerals, central hand for date, double window for day and month, sector for the moonphases combined with subsidiary seconds, circular case, stepped bezel, screw back, 18k pink gold *Blancpain* buckle, *case, dial and movement signed* 38 mm. diam.

US\$6,000-8,000

AED22,000-29,000

With *Blancpain* warranty signed 24 November 1998, setting pin, instruction manual, fitted presentation box and outer packaging.



~•58

BLANCPAIN. A FINE 18K WHITE GOLD LIMITED EDITION AUTOMATIC DUAL TIME WRISTWATCH WITH DATE AND DAY AND NIGHT INDICATION

SIGNED BLANCPAIN, LEMAN TIME ZONE MODEL, NO. 42/333, REF. 2160, CIRCA 2000

Cal. 5L60 automatic movement, 31 jewels, silver dial, applied baton, two subsidiary dials for secondary time zone, fan-form aperture for day and night indication, window for date, circular case, stepped bezel, glazed display snap on back, 18k white gold *Blancpain* buckle, *case, dial and movement signed* 38 mm. diam.

With *Blancpain* warranty dated 9 august 2000, instruction manual, fitted presentation box and outer packaging.

US\$6,000-8,000

AED22,000-29,000



CORUM

TOURBILLON NO. 8/25,

~*59

CORUM. A FINE 18K PINK GOLD LIMITED EDITION DODECAGON TOURBILLON WRISTWATCH

SIGNED CORUM, ADMIRAL'S CUP TOURBILLON 44 MODEL, NO. 8/25, REF. 009.697.55.0081 AN12, CASE NOS. 2240346 AND 01.0062, CIRCA 2010

Automatic movement, 21 jewels, one-minute flying tourbillon carriage visible through the black dial, applied Arabic and arrow numerals, dodecagon-shaped case, glazed display back secured by eight screws, 18k pink gold *Corum* buckle, case, dial and movement signed 44 mm. diam.

US\$30,000–50,000

AED110,000–180,000

With *Corum* International Warranty, Certificate of Limited Edition, fitted presentation box and outer packaging.



ANDERSEN

LIMITED EDITION NO.4/29



~*60

**ANDERSEN. A FINE 18K WHITE GOLD LIMITED EDITION
AUTOMATIC WRISTWATCH WITH MOTHER-OF-PEARL MOON
PHASES**

SIGNED ANDERSEN, GENEVE, KAMAR MODEL, NO.4/29, CIRCA 2011

Cal. 1150.4 automatic movement, 28 jewels, blue engine-turned dial, silvered art-deco style Roman numerals, large aperture for moon phases with white and blue mother-of-pearl discs, circular case, glazed display snap on back, 18k white gold Andersen buckle, case, dial and movement signed
45 mm. diam.

US\$12,000-18,000

AED44,000-65,000

GUY ELLIA

JUMBO CHRONOGRAPH



~61

GUY ELLIA. AN UNUSUAL AND OVERSIZED 18K WHITE GOLD LIMITED EDITION SKELETONIZED AUTOMATIC CHRONOGRAPH WRISTWATCH WITH DATE

SIGNED GUY ELLIA, JUMBO CHRONO MODEL, NO. 17, REF. OG RS 2338, CIRCA 2010

Cal. 1185 automatic movement, 37 jewels, skeletonized dial, window for hour with Arabic numerals at 12 o'clock, revolving outer part of dial for date, three subsidiary dials for constant seconds, 30 minute and 12 hour register, large circular case, two chronograph buttons in band, glazed display back secured by seven screws, full circular rotor in the shape of a wheel with six spokes and applied *Guy Ellia* letters, 18k white gold *Guy Ellia* deployant clasp, case, dial and movement signed 48 mm. diam.

US\$12,000-18,000

AED44,000-65,000



CONCORD

C1 TOURBILLON GRAVITY NO. 1/10

Awarded "Best design of the year 2008" by the prestigious Grand Prix d'Hologerie de Geneve, the Concord C1 chronograph embodies cutting-edge design aligned with technical mastery. As an ultimate construction, this timepiece is designed for discerning individuals in search of exclusivity.

Made in a limited serie of 25 pieces, the C1 enables time measurement from a completely new angle. Synthesizing the creative energy of Concord, the present timepiece is firmly turned towards the future, opening the path towards a new watchmaking generation.



***62**

CONCORD. A FINE AND VERY RARE 18K WHITE GOLD SEMI-SKELETONIZED TOURBILLON AND FLYBACK CHRONOGRAPH WRISTWATCH WITH POWER RESERVE AND TRUST INDEX INDICATIONS

SIGNED CONCORD, C1 TOURBILLON GRAVITY MODEL, NO. 1/10, REF. 03.6.40.1036, CASE NO. 1391554, CIRCA 2008

Cal. C100 mechanical movement, 38 jewels, aperture in the band at 5 o'clock for one-minute flying tourbillon carriage combined with seconds indicator visible through the aperture on the edge, semi-skeletonized dial with off-centre time display, baton numerals, subsidiary dials for 60 minute and 12 hour register, trust index sector at 3 o'clock, fan-form sector for power reserve at 8 o'clock, tonneau-shaped case, protected winding crown at 2 o'clock, chronograph button in the band at 7 o'clock, glazed display back secured by eight screws, PVD-coated 18k white gold *Concord* double deployant clasp, *case, dial and movement signed* 48.5 mm. diam.

US\$35,000–55,000

AED130,000–200,000

With *Concord*, International Warranty, USB key, sales tag, humidification system, fitted presentation box and outer packaging.



CORUM

BUBBLE



~•63

CORUM. A STAINLESS STEEL LIMITED EDITION AUTOMATIC WRISTWATCH WITH SWEEP CENTRE SECONDS

SIGNED CORUM, AUTOMATIC, BUBBLE ROYAL FLUSH MODEL, NO. 9/2006, REF. 082.170.20, CASE NO. 1'750'587, CIRCA 2006

Automatic jewelled movement, dial depicting a suit of heart royal flush, sweep centre seconds with dollar sign, circular water-resistant-type case, domed crystal, screw down crown, glazed display back with playing card rotor secured by 6 screws, stainless steel *Corum* double deployant clasp, *case, dial and movement signed*. 41 mm. diam.

US\$2,000-3,000

AED7,300-11,000

With *Corum* certificate, blank international warranty, instruction manual, leather wallet, poker dealer chip.



~•64

CORUM. A STAINLESS STEEL EDITION AUTOMATIC WRISTWATCH WITH SWEEP CENTRE SECONDS

SIGNED CORUM, AUTOMATIC, CASINO BUBBLE MODEL, REF. 82.150.20, CASE NO. 772115, CIRCA 2003

Cal. 2892 A2 automatic movement, 21 jewels, depicting a roulette dial, applied Arabic quarter numerals, sweep centre second hand tipped with white roulette ball, circular water-resistant-type case, domed crystal, glazed display back secured by six screws, screw down crown, stainless steel *Corum* double deployant clasp, *case, dial and movement signed* 45 mm. diam.

US\$2,000-3,000

AED7,300-11,000

GERALD GENTA



•*65

GERALD GENTA. A TITANIUM AUTOMATIC WRISTWATCH WITH JUMPING HOURS, RETROGRADE MINUTES, DATE AND SWEEP CENTRE SECONDS

SIGNED GERALD GENTA, ARENA BIRETRO MODEL, REF. BSP.Y.80, CASE NO. 119'782, CIRCA 2006

Cal. GG 7723 automatic movement, 27 jewels, two tone green and white dial, Arabic numerals, aperture for hour, white retrograde minute chapter ring, retrograde date at 6 o'clock, sweep centre second, circular case, back secured by eight screws, stainless steel *Gerald Genta* double deployant clasp, case, dial and movement signed 44 mm. diam.

US\$3,000–5,000

AED11,000–18,000

With *Gerald Genta* product literature, fitted presentation box and outer packaging.



~*66

GERALD GENTA. A FINE BRONZE WRISTWATCH WITH JUMPING HOURS, RETROGRADE MINUTES, DATE AND SWEEP CENTRE SECONDS

SIGNED GERALD GENTA, GEFICA BIRETRO MODEL, REF. GBS.Y.98, CASE NO. 123319, CIRCA 2008

Cal. GG1004 automatic movement, 27 jewels, copper textured dial with black chapter ring, white Arabic numerals, window for hours, upper fan-form sector for retrograde minutes, lower fan-form sector for retrograde date, sweep centre seconds, circular case, milled band, screw down crown, glazed display back secured by eight screws, titanium *Gerald Genta* double deployant clasp, case, dial and movement signed 44 mm. diam.

US\$4,000–6,000

AED15,000–22,000

With *Gerald Genta* Certificate of Origin, International Warranty dated 4th of September 2008, setting pin, product literature, pen, gloves, fitted presentation box and outer packaging.

GERALD GENTA



•*67
GERALD GENTA. AN UNUSUAL 18K WHITE GOLD OCTAGONAL WRISTWATCH WITH GOLF STROKE COUNTERS AND BRACELET
SIGNED GERALD GENTA, L'OPEN GOLF MODEL, NO. 1, REF. G.35094, CASE NO. 66600
CIRCA 1990

Quartz movement, green dial centering upon a golf ball, applied dot numerals, four magnified apertures at 2, 4, 8 and 10 o'clock for golf stroke counters, octagonal-shaped case, four pushers in the band to operate counters, reset pusher at 9 o'clock, 18k white gold *Gerald Genta* bracelet and concealed deployant clasp, *case, dial and movement signed* 37 mm. width Overall length approximately 210 mm.

US\$2,000-4,000 AED7,300-15,000



•*68
GERALD GENTA. AN 18K WHITE GOLD OCTAGONAL AUTOMATIC WRISTWATCH WITH JUMP HOUR RETROGRADE MINUTES, MOTHER-OF-PEARL SECTOR AND BRACELET
SIGNED GERALD GENTA, REF. 35107, CASE NO. 69425, CIRCA 1990

Automatic jewelled movement, green dial with golf player's club acting as retrograde minute hand on a mother-of-pearl sector with Arabic numerals, window for jumping hours, octagonal case, back secured by eight screws, 18k white gold *Gerald Genta* bracelet and concealed deployant clasp, *case, dial and movement signed* 35 mm. diam.; overall length approximately 200 mm.

US\$2,000-4,000 AED7,300-15,000



•*69
GERALD GENTA. A LADY'S STAINLESS STEEL OCTAGONAL WRISTWATCH WITH DATE

SIGNED GERALD GENTA, SUCCESS MODEL, NO. 21, REF. G.3351.7, CASE NO. 63142, CIRCA 1990
Quartz movement, blued textured dial, window for date, octagonal case, faceted crystal, screwed bezel, back secured by eight screws, stainless steel *Gerald Genta* double deployant clasp, *case, dial and movement signed* 27 mm. width

US\$2,000-3,000 AED7,300-11,000

With *Gerald Genta* fitted presentation box and outer packaging.

GERALD GENTA



~70

GERALD GENTA. A VERY FINE 18K WHITE GOLD AUTOMATIC OCTAGONAL PERPETUAL CALENDAR WRISTWATCH WITH MOTHER-OF-PEARL DIAL AND MOON PHASES

SIGNED GERALD GENTA, AUTOMATIC, REF. G.32747, CASE NO. 54700, CIRCA 2007

Automatic jewelled movement, mother-of-pearl dial, applied dot numerals, four subsidiary dials for day, date, month with leap year and moon phases, octagonal-shaped water-resistant-type case, raised bezel, t-bar lugs, back secured by eight screws, 18k white gold *Gerald Genta* buckle, case, dial and movement signed
35 mm. width

US\$5,000-8,000

AED19,000-29,000

With *Gerald Genta* fitted presentation box and outer packaging.

Gerald Genta is truly one of the greatest watch designers of all time. By being behind the designs of some of the century's most legendary watches (Audemars Piguet Royal Oak, IWC Ingenieur, Omega Constellation & Seamaster, Patek Philippe Nautilus amongst others) his talent has left an enduring mark in the watchmaking universe.

For his own eponymous line, Genta was remembered as the world record holder for consecutive years in the mid-1990s for creating the world's most complicated watch, his masterpiece the "Grande Sonnerie". On a more whimsical note, Genta created a limited edition of Disney wristwatches featuring Mickey Mouse, Minnie Mouse, Donald Duck, Scrooge and Goofy. Genta's designs transcend time and fashion and remain to this day icons of high horology of the 20th and 21st centuries.

DANIEL ROTH



~*71

DANIEL ROTH. A FINE 18K WHITE GOLD AND DIAMOND-SET TONNEAU-SHAPED AUTOMATIC WRISTWATCH WITH RETROGRADE HOURS AND DATE

SIGNED DANIEL ROTH, PREMIER RETROGRADE MODEL, REF. 807.L.10, CASE NO. 10'364, CIRCA 2000

Automatic jewelled movement, silver engine-turned dial, luminous Arabic numerals, arched sector for retrograde hour, outer five minute divisions, subsidiary dial for date, tonneau-shaped case, diamond-set bezel, back secured by four screws, 18k white gold *Daniel Roth* buckle, case, dial and movement signed
40 mm. length

US\$4,000-6,000

AED15,000-22,000

With *Daniel Roth* blank warranty, Certificate of Authenticity and provenance, *Daniel Roth* reference tag, club *Daniel Roth* card, fitted presentation box and outer packaging.



~72

DANIEL ROTH. A FINE 18K WHITE GOLD LIMITED EDITION TONNEAU-SHAPED AUTOMATIC WRISTWATCH WITH RETROGRADE MINUTE AND JUMPING HOURS

SIGNED DANIEL ROTH, PAPILLON MODEL, NO.27/110, CIRCA 1999

Cal. DR 113 automatic movement, 27 jewels, engine-turned grey dial, Arabic numerals, aperture for jumping hour, fan-form sector ring for retrograde minutes, subsidiary seconds, tonneau-shaped case, glazed display snap on back, 18k white gold *Daniel Roth* buckle, case, dial and movement signed
39 mm. length

US\$5,000-8,000

AED19,000-29,000

With *Daniel Roth* blank certificate of warranty, fitted presentation box and outer packaging.

DANIEL ROTH



~*73

DANIEL ROTH. A FINE AND RARE 18K WHITE GOLD TONNEAU-SHAPED TOURBILLON WRISTWATCH WITH RETROGRADE DATE AND POWER RESERVE

SIGNED DANIEL ROTH, TOURBILLON RETROGRADE DATE MODEL, NO. 16, REF. 196.X.60, CIRCA 1990

DR. 730 mechanical movement, 36 jewels, aperture for one minute tourbillon carriage visible through the silvered engine-turned dial, applied Arabic numerals, silver arched sector for retrograde date, subsidiary seconds, tonneau-shaped case, glazed display back with power reserve secured by four screws, 18k white gold *Daniel Roth* buckle, case, dial and movement signed 41 mm length.

US\$25,000-40,000

AED91,000-150,000

With *Daniel Roth* tool kit, fitted presentation box and outer packaging.





~•74

CORUM. A FINE PLATINUM WRISTWATCH WITH METEORITE DIAL
SIGNED CORUM, METEORITE, REF.50450-70, CASE NO. 408244, CIRCA 2000

Quartz movement, meteorite dial, circular case, case back secured by six screws with engraved inscription *Meteorite Dial of Cosmic Origin Impact Point 19°27'N., 99°35'W. Mexico*, platinum Corum buckle, case, dial and movement signed
30 mm. diam.

US\$4,000-6,000

AED15,000-22,000



~•75

BLANCPAIN. A FINE 18K WHITE GOLD LIMITED EDITION WRISTWATCH, MADE TO CELEBRATE THE 300TH ANNIVERSARY OF THE BIRTH OF JEHAN-JACQUES BLANCPAIN

SIGNED BLANCPAIN, VILLERET JUBILÉ EDITION, NO. 218/300, CIRCA 1993

Cal. 64-1 mechanical movement, 17 jewels, matte silvered dial, applied Roman numerals, subsidiary seconds, circular case, stepped bezel, snap on back engraved "1693-1993 Jubilé, No 219/300 série limitée", 18k white gold Blancpain buckle, case, dial and movement signed

34 mm. diam.

US\$2,000-4,000

AED7,300-15,000

With Blancpain stamped warranty, instruction manual, fitted presentation box and outer packaging.





~•*76

CARTIER. A STAINLESS STEEL RECTANGULAR WRISTWATCH

SIGNED CARTIER, TANK SOLO MODEL, REF. 2715, CASE NO. 259962 PL, CIRCA 2000

Quartz movement, silvered dial, Roman numerals, inner ring for minute division, rectangular case, sapphire-set crown, back secured by four screws, stainless steel *Cartier* deployant clasp, *case, dial and movement signed*

26 mm. width

US\$1,200–2,000

AED4,400–7,300

With *Cartier* certificate, warranty dated 20 January 2011, instruction manual, DVD and fitted presentation box.



~•*77

AUDEMARS PIGUET. A PLATINUM SQUARE WRISTWATCH

SIGNED AUDEMARS PIGUET, REF. 14821PT/0/0002/02, CASE NO. D 38989, CIRCA 1995

Mechanical movement, white dial, Roman numerals, square case, back secured by four screws, platinum *Audemars Piguet* buckle, *case, dial and movement signed*

27 mm. width

US\$3,000–5,000

AED11,000–18,000

With *Audemars Piguet* sales tag.

CORUM

GOLDEN BRIDGE



~•78

CORUM. A FINE AND RARE 18K GOLD SEMI-SKELETONISED WRISTWATCH WITH LINEAR MOVEMENT

SIGNED CORUM. GOLDEN BRIDGE MODEL, REF. 13.240.50, CASE NO. 567019, CIRCA 2005

Cal. 2421 engraved 18k gold baguette-shaped mechanical jewelled lever movement, white ribbed dial, applied gold dagger numerals, circular case, stepped bezel, winding crown on case back, glazed display back secured by four screws, large 18k gold Corum buckle, case, dial and movement signed
35 mm. diam.

US\$5,000-8,000 AED19,000-29,000



CORUM

GOLDEN BRIDGE DUBAI

~79

CORUM. A VERY FINE, TITANIUM SKELETONIZED LIMITED EDITION TONNEAU-SHAPED WRISTWATCH WITH LINEAR MOVEMENT, MADE FOR DUBAI

SIGNED CORUM, GOLDEN BRIDGE MODEL, NO. 23/25, REF. 05. 0037, CASE NO. 2'232'543, CIRCA 2010

Cal. 7000 engraved 18k gold baguette-shaped mechanical jeweled movement, tonneau-shaped case with glazed sides, left band inscribed *Dubai*, right band inscribed *Limited Edition*, winding crown at 6 o'clock, glazed display back secured by four screws, titanium Corum buckle, case, dial and movement signed 41 mm. length.

US\$12,000-20,000

AED44,000-73,000

With Corum fitted presentation box.





~*80

PIERRE KUNZ. AN 18K PINK GOLD SQUARE AUTOMATIC WRISTWATCH WITH RETROGRADE SUBSIDIARY SECONDS

SIGNED PIERRE KUNZ, GENEVE, SPIRIT OF CHALLENGE MODEL, NO. 177, REF. PKB 002 STR, CIRCA 2005

Automatic jewelled movement, white dial, Roman numerals, three silver brushed fan-form sectors for retrograde seconds, square case, glazed display back secured by four screws, 18k pink gold *Pierre Kunz* buckle, *case, dial and movement signed*

38 mm. width

US\$4,000–6,000

AED15,000–22,000



~*81

CARTIER. A FINE STAINLESS STEEL AND 18K GOLD SQUARE AUTOMATIC WRISTWATCH WITH SWEEP CENTRE SECONDS, MADE TO COMMEMORATE THE 100TH ANNIVERSARY OF THE SANTOS MODEL

SIGNED CARTIER, AUTOMATIC, SANTOS 100 MODEL, REF. 2656, CASE NO. 380930CE, CIRCA 2004

Automatic jewelled movement, silvered dial, Roman numerals, sweep centre seconds, square case, 18k gold screwed bezel secured by six screws, back secured by eight screws, stainless steel and 18k gold *Cartier* double deployant clasp, *case, dial and movement signed* 37 mm. width

US\$3,000–5,000

AED11,000–18,000

The present watch was made to commemorate the 100th anniversary of the celebrated Santos model in 2004

With *Cartier* fitted pouch and presentation box.

CARTIER

SANTOS 100



~*82

CARTIER. A FINE 18K GOLD SQUARE AUTOMATIC WRISTWATCH WITH SWEEP CENTRE SECONDS, MADE TO COMMEMORATE THE 100TH ANNIVERSARY OF THE SANTOS MODEL
SIGNED CARTIER, AUTOMATIC, SANTOS 100 MODEL, REF. 2657, CASE NO. 277336CE, CIRCA 2004

Automatic jewelled movement, silvered dial, Roman numerals, sweep centre seconds, square case, screwed bezel secured by six screws, sapphire-set crown, back secured by eight screws, 18k gold *Cartier* double deployant clasp, *case, dial and movement signed*
37 mm. width

US\$6,000–8,000

AED22,000–29,000

The present watch was made to commemorate the 100th anniversary of the celebrated Santos model in 2004

With *Cartier* pouch.

GIRARD-PERREGAUX



~*83

GIRARD-PERREGAUX. A FINE 18K WHITE GOLD RECTANGULAR AUTOMATIC CHRONOGRAPH WRISTWATCH

SIGNED GIRARD-PERREGAUX, VINTAGE CHRONOGRAPH 1999 MODEL, REF. 2599, CASE NO. OG N 90, CIRCA 200

Cal. 3080 automatic movement, 38 jewels, black dial, luminous Arabic numerals, two engine-turned subsidiary dials for constant seconds and 30 minute register, rectangular case, stepped bezel, two chronograph buttons in the band, snap on back, 18k white gold *Girard-Perregaux* buckle, case, dial and movement signed 30 mm. width

US\$4,000-6,000

AED15,000-22,000



~*84

GIRARD-PERREGAUX. A FINE 18K WHITE GOLD RECTANGULAR AUTOMATIC CHRONOGRAPH WRISTWATCH

SIGNED GIRARD-PERREGAUX, VINTAGE CHRONOGRAPH 1945 MODEL, REF. 2599, CASE NO. OG N 303, CIRCA 2000

Automatic jewelled movement, salmon textured dial, applied Arabic and dagger numerals, two engine-turned subsidiary dials for constant seconds and 30 minute register, rectangular case, stepped bezel, two chronograph buttons in the band, snap on back, 18k white gold *Girard-Perregaux* buckle, case and dial signed 30 mm. width

US\$4,000-6,000

AED15,000-22,000

With *Girard-Perregaux* fitted presentation box and outer packing.

UNIVERSAL GENÈVE



•85
**UNIVERSAL GENÈVE. A FINE PLATINUM AND
 18K PINK GOLD LIMITED EDITION DOUBLE DIALED
 WRISTWATCH WITH JUMP HOUR, DUAL TIME
 AND DATE**

SIGNED UNIVERSAL GENÈVE, GOLDEN JANUS MODEL,
 NO. 99/150, REF. 042.400, CIRCA 1994

Mechanical jewelled movement, silvered dial, applied
 quarter Roman numerals, outer minute division, the
 reverse silvered dial with jump hour at 12 o'clock,
 subsidiary dials for minute and date, Arabic numerals,
 day and night indication at 3 o'clock, rectangular
 case, interior back plate engraved '100 ans de tradition
 horlogère, 1894-1994', steel and 18k pink gold Universal
 Genève deployant clasp, case, dial and movement signed
 27 mm. width

US\$4,000-6,000

AED15,000-22,000

With Universal Genève signed international warranty, loupe,
 fitted presentation box and outer packaging.



CARTIER

TANK AMÉRICAINÉ



~86

CARTIER. A FINE AND RARE 18K WHITE GOLD RECTANGULAR FLYING TOURBILLON WRISTWATCH

SIGNED CARTIER, TANK AMÉRICAINÉ MODEL, NO. 51, REF. 3199, MOVEMENT NO. 1089, CIRCA 2009

Cal. 9452 MC mechanical movement stamped with the Geneva seal, 19 jewels, one-minute flying tourbillon carriage visible through the grey engine-turned dial, Roman and baton numerals, rectangular case, sapphire-set crown, glazed display back secured by eight screws, 18k white gold *Cartier* deployant clasp, case, dial and movement signed 52 mm. length

US\$40,000-60,000

AED150,000-220,000

Created in 2009, the Cartier Tank Américaine Flying tourbillon quickly captivated watch enthusiasts for both its aesthetics and mechanism. Crafted with one of the first in-house movement developed by Cartier, it is furthermore stamped with the prestigious Geneva seal.

Through its audacious volumes and refined classic looks, allied with the MC9452 Caliber, the Tank Américaine showcases the strength of the prestigious Cartier maison and its ability to develop timeless pieces.





FRANCK MULLER

CINTRÉE CURVEX



~•*87

FRANCK MULLER. A FINE 18K WHITE GOLD AUTOMATIC TONNEAU-SHAPED WRISTWATCH

SIGNED FRANCK MULLER, MASTER OF COMPLICATION, HAVANA MODEL, NO. 40, CASE NO. 7501 S6, CIRCA 1998

Mechanical jewelled movement, two-tone silver matte dial, Arabic and dagger numerals, subsidiary dial for seconds, tonneau-shaped water-resistant-type case, back secured by four screws, 18k white gold *Franck Muller* buckle, *case, dial and movement signed* 27 mm. width

US\$3,000–5,000

AED11,000–18,000

With *Franck Muller* sales tag and fitted presentation box and outer packaging.



*88

FRANCK MULLER. A LADY'S 18K GOLD TONNEAU-SHAPED WRISTWATCH WITH BRACELET

SIGNED FRANCK MULLER GENÈVE, CINTRÉE CURVEX CHRONOMETRO MODEL, NO. 288, REF. 1750 S6 PM, CIRCA 1999

Mechanical movement, 17 jewels, silvered engine-turned dial, black Arabic numerals, subsidiary seconds, tonneau-shaped case, back secured by four screws, 18k gold *Franck Muller* bracelet and concealed double deployant clasp, *case, dial and movement signed* 25 mm. width; overall length approximately 150 mm.

US\$5,000–8,000

AED19,000–29,000

With *Franck Muller* certificate signed 20 April 1999, fitted presentation box and outer packaging.

JAEGER-LECOULTRE

REVERSO



(back)

(front)

**•*89
JAEGER-LECOULTRE. A LADY'S STAINLESS
STEEL REVERSIBLE RECTANGULAR
WRISTWATCH WITH MINUTE REGISTER
AND BRACELET**

SIGNED JAEGER-LECOULTRE, REVERSO MEMORY
MODEL, REF. 255.882, CASE NO. 1971041,
CIRCA 2000/2002

Cal. 862 mechanical movement, 23 jewels,
silver engine-turned dial, chapter ring with
Arabic numerals, subsidiary dial for seconds,
rectangular-shaped case, reverse with
black dial, 60 minute register activated by
button in the band, all pivoting within the
rectangular backplate, stainless steel *Jaeger-
LeCoultre* bracelet and concealed double
deployant clasp, *case, dial and movement signed*
23 mm. width; overall length approximately
150 mm.

US\$2,000-3,000 AED7,300-11,000



***90**

**JAEGER-LECOULTRE. A LADY'S FINE
STAINLESS STEEL AND DIAMOND-SET
REVERSIBLE RECTANGULAR WRISTWATCH
WITH BRACELET**

SIGNED JAEGER-LECOULTRE, REVERSO MODEL,
REF. 265.8.082 B, CASE NO. 2'111'638,
CIRCA 2002

Quartz movement, two-tone silvered dial,
white inner minute ring, Arabic numerals,
rectangular-shaped case, diamond-set bezel,
diamond-set reversing side engraved *GB*, all
pivoting within the plain backplate, stainless
steel *Jaeger-LeCoultre* bracelet and double
deployant clasp, *case, dial and movement signed*
21 mm. width; overall length of bracelet
approximately 155 mm.

US\$1,900-3,200 7,000-12,000

With *Jaeger-LeCoultre* Certificate of Origin dated
31 of May 2002, instruction manual, certificate
of authenticity, Certificat de gravure, fitted
presentation box and outer packaging.



(back)

CARTIER

TANK FRANÇAISE



***91**

**CARTIER. A LADY'S FINE 18K GOLD AND DIAMOND-SET SQUARE WRISTWATCH
WITH BRACELET**

SIGNED CARTIER, TANK FRANÇAISE MODEL, REF. 2385, CASE NO. MG284815, CIRCA 2009

Quartz movement, silvered dial, Roman numerals, square case, diamond-set sides and crown,
back secured by four screws, 18k gold and part diamond-set *Cartier* bracelet and concealed
double deployant clasp *case, dial and movement signed*
20 mm. width; overall length approximately 160 mm.

US\$8,000-12,000

AED30,000-44,000

CARTIER

TANK FRANÇAISE



*92

CARTIER. A FINE 18K WHITE GOLD AND DIAMOND-SET RECTANGULAR CHRONOGRAPH WRISTWATCH WITH DATE AND BRACELET

SIGNED CARTIER, TANK FRANÇAISE CHRONOREFLEX MODEL, REF. 2367, CASE NO. MG263051, CIRCA 2000

Quartz movement, silvered engine-turned dial, Roman numerals, three subsidiary engine-turned dials for date, 30 minute and 12 hour registers, rectangular case, pavé-set diamond band, two chronograph buttons in the band, diamond-set crown, back secured by four screws, 18k white gold *Cartier* bracelet and concealed double deployant clasp, *case, dial and movement signed* 36 mm. length.; overall length approximately 230 mm.

US\$8,000–12,000

AED30,000–44,000



***93**

HERMÈS. A LADY'S FINE STAINLESS STEEL BRACELET WATCH WITH MOTHER-OF-PEARL DIAL

SIGNED HERMÈS, KELLY MODEL, REF. KE1.231, CASE NO. 2416757, CIRCA 2010

Quartz movement, mother-of-pearl dial, applied diamond-set quarter numerals, padlock-shaped case, diamond-set band, diamond-set case back secured by four screws, stainless steel *Hermès* buckle, *case, dial and movement signed*

20 mm. width; overall bracelet length approximately 190 mm.

US\$1,900–3,800

AED7,000–14,000



~*94

ROGER DUBUIS. A LADY'S 18K WHITE GOLD AND DIAMOND-SET LIMITED EDITION RECTANGULAR WRISTWATCH

SIGNED ROGER DUBUIS, HORLOGER GENEVOIS, TOO MUCH MODEL, NO. 17/28, CIRCA 2006

Cal. RD54 mechanical movement, 19 jewels, white dial, Arabic numerals, rectangular case, diamond-set bezel and lugs, glazed display back secured by eight screws, 18k white gold and diamond-set *Roger Dubuis* buckle, *case, dial and movement signed*
36 mm. width

US\$4,000–6,000

AED15,000–22,000

With *Roger Dubuis* fitted presentation box and outer packaging.

~*95

**DAVID MORRIS. A FINE BLACKENED 18K WHITE
GOLD AND DIAMOND-SET RECTANGULAR
WRISTWATCH WITH MOTHER-OF-PEARL DIAL**

SIGNED DAVID MORRIS, INTERNATIONAL, NO.67,
CIRCA 2000

Quartz movement, mother-of-pearl dial, diamond-
set quarter Arabic numerals, rectangular case,
brown diamond-set bezel, band and lugs, brown
diamond-set crown, back secured by four screws,
black pvd-coated and sapphire-set *David Morris*
deployant clasp, *case, dial and movement signed*
25 mm. width

US\$7,000-10,000 AED26,000-36,000



FRANCK MULLER

TALISMAN NO. 14/15



~*96

FRANCK MULLER. AN 18K WHITE GOLD AND DIAMOND-SET LIMITED EDITION AUTOMATIC TONNEAU-SHAPED WRISTWATCH WITH SWEEP CENTRE SECONDS, AN 18K WHITE GOLD AND DIAMOND-SET RING AND A PAIR OF 18K WHITE GOLD AND DIAMOND-SET EARRINGS

SIGNED FRANCK MULLER, GENÈVE, MASTER OF COMPLICATIONS, TALISMAN LIMITED EDITION, NO. 14/15, REF. 6850 SC SUNSET, CIRCA 2005

Automatic jewelled movement, black engine-turned dial, oversized and diamond-set Arabic numerals, sweep centre seconds, tonneau-shaped case, back secured by four screws, 18k white gold *Franck Muller* buckle, case, dial and movement signed; a matching 18k white gold and diamond-set ring, and a pair of 18k white gold and diamond-set earrings, all signed by *Franck Muller*
Watch 33 mm. width; the rings size 53.

US\$10,000–15,000

AED37,000–55,000

With *Franck Muller* Certificat d'Origine et de Garantie signed 15 July 2005, two Jewellery international warranties for the earrings and ring, fitted presentation box and outer packaging.



***97**

CARTIER. A LADY'S FINE 18K WHITE GOLD ELONGATED OVAL WRISTWATCH WITH AN 18K WHITE GOLD AND DIAMOND-SET COCKTAIL RING

SIGNED CARTIER. BAIGNOIRE ALONGEE MODEL, REF. 2514, CASE NO. 118058AF, CIRCA 2008

Cal. 060 MC mechanical movement, 21 jewels, silver engine-turned dial, black elongated Roman numerals, elongated oval case, sapphire-set crown, back secured by eight screws, 18k white gold *Cartier* deployant buckle, *case, dial and movement signed*; and an 18k white gold and diamond-set cocktail ring *signed by Cartier*

The watch 22mm. width; the ring size 51.

US\$10,000-15,000

AED37,000-55,000

Cartier





***98**

THE ROYAL DIAMOND. A LADY'S FINE 18K GOLD AND DIAMOND-SET OVAL-SHAPED BRACELET WATCH

SIGNED THE ROYAL DIAMOND, CIRCA 2000

Quartz movement, pavé-set diamond dial, oval-shaped case enhanced by a pear-shaped and brilliant-cut diamond-set bezel, snap on back, 18k gold and diamond-set *The Royal Diamond* bracelet, *case and movement signed*

25 mm. width; overall length approximately 150 mm.

US\$7,000–10,000

AED26,000–36,000

•*99

GRAFF. A LADY'S FINE 18K GOLD AND DIAMOND-SET WRISTWATCH

SIGNED GRAFF, REF. 4393, CIRCA 1990

Mechanical movement, pavé-set diamond dial, circular case, diamond-set bezel, diamond-set crown, snap on back, 18k gold and diamond-set *Graff* buckle, *case, dial and movement signed*

26 mm. diam.

US\$4,000–6,000

AED15,000–22,000





***100**

GRAFF BY CHOPARD. A LADY'S VERY FINE 18K GOLD AND DIAMOND-SET BRACELET WATCH

SIGNED GRAFF, LONDON, HAPPY DIAMONDS MODEL, REF. 43/5858, CASE NO. 3 32768 4117, CIRCA 1995

Quartz jewelled movement, pavé-set diamond dial set with two glazed plates containing seven floating diamond collets, circular case, diamond-set bezel, outer ring and lugs, snap on back, 18k gold and diamond-set *Chopard* bracelet, *case, crystal and movement signed* 27 mm. diam.; overall length approximately 200 mm.

US\$15,000–25,000

AED 55,000–91,000

HARRY WINSTON

PREMIER



***101**

HARRY WINSTON. AN 18K GOLD AND WHITE GOLD AUTOMATIC WRISTWATCH WITH BRACELET

SIGNED HARRY WINSTON, AUTOMATIC, PREMIER MODEL, CASE NO. 01020178, CIRCA 2005

Automatic jewelled movement, silver dial, Arabic numerals, window for date, circular case, snap on back, 18k gold and white gold-set *Harry Winston* bracelet and concealed deployant clasp, *case, dial and movement signed*

30 mm. diam.; overall length approximately 160 mm.

US\$6,000–8,000

AED22,000–29,000



•*102

HARRY WINSTON. A FINE 18K GOLD CHRONOGRAPH WRISTWATCH

SIGNED HARRY WINSTON, PREMIER CHRONOGRAPH MODEL, REF. 200MCA35GL1, CASE NO. 180-AG, CIRCA 2010

Cal. 1185 automatic movement, 37 jewels, white dial, applied Arabic numerals, three subsidiary dials for constant seconds, 30 minute and 12 hour registers, window for date, circular case, band engraved *NO.180* two chronograph buttons in the band, snap on back, 18k gold *Harry Winston* deployant clasp, *case, dial and movement signed* 37 mm. diam.

US\$4,000–6,500

AED15,000–24,000

With *Harry Winston* fitted presentation box and outer packaging.

CÉDRIC JOHNER



~•103

CÉDRIC JOHNER. AN 18K GOLD AUTOMATIC TONNEAU-SHAPED WRISTWATCH WITH RETROGRADE SECONDS

SIGNED CÉDRIC JOHNER. GENEVE, SECONDE RETROGRADE, NO. 5, ABYSS 5330/4, CIRCA 2000

Automatic jewelled movement, silvered brushed outer dial with engine-turned centre, Arabic numerals, fan-form sector for retrograde seconds, tonneau-shaped case, back secured by four screws, 18k gold *Cédric Johner* deployant clasp, case, dial and movement signed 39 mm. width

US\$3,000–5,000

AED11,000–18,000



~•104

CÉDRIC JOHNER. AN 18K WHITE GOLD AUTOMATIC TONNEAU-SHAPED WRISTWATCH

SIGNED CÉDRIC JOHNER, GENEVE, NO.1, ABYSS 4810/4 MODEL, CIRCA 2005

Cal. 10 automatic jewelled movement, blue brushed dial, white Arabic and diamond-set numerals, subsidiary seconds, tonneau-shaped water-resistant type case, screw down crown, glazed display back secured by four screws, 18k white gold *Cédric Johner* buckle, case, dial and movement signed 39 mm. width

US\$3,000–5,000

AED11,000–18,000



•*105

GLASHÜTTE ORIGINAL. A STAINLESS STEEL CUSHION-SHAPED AUTOMATIC BRACELET WATCH WITH SWEEP CENTRE SECONDS AND DATE

SIGNED GLASHÜTTE ORIGINAL, GLASHÜTTE I/SA, SENATOR SEVENTIES PANORAMADATUM MODEL, NO. 0388, REF NO. 23'947'131'214, CIRCA 2012

Automatic movement, 39 jewels, brushed blue dial, applied dagger numerals, sweep centre seconds, large window for date, cushion-shaped case, screw down crown, glazed display back secured by eight screws, stainless steel *Glashütte Original* bracelet and deployant clasp, *case, dial and movement signed*

38 mm. width; overall length approximately 170 mm.

US\$4,000–6,000

AED15,000–22,000

With *Glashütte Original* warranty card, instruction manual, fitted presentation box and outer packaging.



~•*106

GERALD GENTA. A FINE STAINLESS STEEL RECTANGULAR WRISTWATCH WITH DATE

SIGNED GERALD GENTA, SOLO MODEL, REF. SSO.M.10, CASE NO. 103890, CIRCA 2000

Automatic jewelled movement, white dial, Arabic numerals, window for date, rectangular-shaped case, back secured by four screws, stainless steel *Gerald Genta* buckle, *case, dial and movement signed* 35 mm. width

US\$2,000–3,000

AED7,300–11,000

With a *Gerald Genta* fitted presentation box.



•*107

PARMIGIANI FLEURIER. A FINE STAINLESS STEEL LIMITED EDITION AUTOMATIC TONNEAU-SHAPED WRISTWATCH WITH SWEEP CENTRE SECONDS, DATE AND BRACELET

SIGNED PARMIGIANI FLEURIER, KAPLA GRANDE MODEL, NO. 43/100, REF. PF006803 # 9790, CIRCA 2009

Automatic movement, 32 jewels, *light blue* dial, applied Arabic and dagger numerals, sweep centre seconds, fan-form aperture for date, tonneau-shaped case, glazed display back secured by six screws, stainless steel *Parmigiani Fleurier* double deployant clasp, *case, dial and movement signed*

35 mm. width; overall length approximately 195 mm.

US\$3,000–5,000

AED11,000–18,000

With *Parmigiani Fleurier* undated International Guarantee, product literature, polishing cloth, fitted presentation box and outer packaging.



•108

DE GRISOGONO. A LADY'S STAINLESS STEEL AND DIAMOND-SET SQUARE AUTOMATIC DUAL TIME WRISTWATCH WITH BRACELET

SIGNED DE GRISOGONO, GENEVE, INSTRUMENTINO MODEL, CASE NO.008436, CIRCA 2000

Quartz movement, silvered engine-turned dial, diamond-set dagger and dot numerals, subsidiary dial with Arabic numerals for second time zone, curved square case, diamond-set lugs, case back secured by four screws, stainless steel *De Grisogono* bracelet and double deployant clasp, *case, dial and movement signed*

29 mm. width; overall length approximately 180 mm.

US\$2,000–3,000

AED7,300–11,000

With *De Grisogono* pouch.



•109

VACHERON CONSTANTIN. A STAINLESS STEEL AUTOMATIC BRACELET WATCH WITH SWEEP CENTRE SECONDS AND DATE

SIGNED VACHERON CONSTANTIN, GENEVE, CHRONOMETER AUTOMATIC, OVERSEAS MODEL, REF. 42040 / 72040, CASE NO. 677'862, CIRCA 1998

Automatic jewelled movement, black dial, applied baton numerals, sweep centre seconds, aperture for date, tonneau-shaped water-resistant-type case, screw down crown, back secured by eight screws and case back engraved with the *Overseas* logo, stainless steel *Vacheron Constantin* bracelet and double deployant clasp, *case, dial and movement signed*

37 mm. diam.; overall length approximately 225 mm.

US\$4,000–6,000

AED15,000–22,000

With *Vacheron Constantin* sales tag and fitted presentation box.



110

PATEK PHILIPPE. A STAINLESS STEEL AUTOMATIC BRACELET WATCH WITH SWEEP CENTRE SECONDS AND DATE, MADE FOR THE RUSSIAN MARKET

SIGNED PATEK PHILIPPE, GENEVE, SCULPTURE MODEL, REF. 5091/1, MOVEMENT NO. 3'014'464, CASE NO. 4'063'604, MANUFACTURED IN 2000

Cal. 315/190 automatic movement, 30 jewels, black dial, white Arabic numerals, sweep centre seconds, window for date, circular case, stepped bezel, blue enameled crown with protective bar, screw back, stainless steel *Patek Philippe* bracelet and concealed double deployant clasp, *case, dial and movement signed*

36 mm. diam.; overall length approximately 180 mm.

US\$6,000–10,000

AED22,000–36,000

With *Patek Philippe* Extract from the Archives confirming production of the present watch in 2000 and its subsequent sale on 3 May 2000.

With *Patek Philippe* pouch.

PATEK PHILIPPE

REF. 5085



***111**

PATEK PHILIPPE. A STAINLESS STEEL AUTOMATIC BRACELET WATCH WITH POWER RESERVE, DATE AND MOON PHASES

SIGNED PATEK PHILIPPE, GENEVE, REF. 5085, MOVEMENT NO. 3'110'102, CASE NO. 4'052'809, MANUFACTURED IN 1998

CAL 240/164 automatic movement stamped with the Geneva seal, 29 jewels, black dial, white Arabic numerals, fan-form power reserve indication, two subsidiary dials for moon phases combined with date and seconds, circular water-resistant-type case, screw down crown, glazed display screw back, stainless steel *Patek Philippe* bracelet and concealed double deployant clasp, *case, dial and movement signed*
37 mm. diam.; overall length approximately 200 mm.

US\$10,000–15,000

AED37,000–55,000

With *Patek Philippe* Extract from the Archives confirming production of the present watch in 1998 and its subsequent sale on 7 December 1998.

With *Patek Philippe* setting pin.

PATEK PHILIPPE

NAUTILUS REF. 3800/1



***112**

PATEK PHILIPPE. A FINE 18K GOLD AND DIAMOND-SET AUTOMATIC BRACELET WATCH WITH SWEEP CENTRE SECONDS AND DATE

SIGNED PATEK PHILIPPE, GENEVE, NAUTILUS MODEL, REF. 3800/1, MOVEMENT NO. 1'423'778, CASE NO. 2'810'825, CIRCA 1990

Cal. 335 SC automatic movement, 29 jewels, blue ribbed dial, applied diamond-set numerals, sweep centre seconds, window for date, sweep centre seconds, cushion-shaped water-resistant-type case, 18k gold and stainless steel *Patek Philippe* bracelet and deployant clasp, *case, dial and movement signed*

37 mm. width; overall length approximately 135 mm.

US\$15,000-25,000

AED55,000-91,000



113

PATEK PHILIPPE. A VERY FINE STAINLESS STEEL AUTOMATIC BRACELET WATCH WITH POWER RESERVE, DATE, MOON PHASES, ORIGINAL CERTIFICATE AND BOX

SIGNED PATEK PHILIPPE, GENEVE, REF. 5712, MOVEMENT NO. 5'733'099, CASE NO. 4'936'927, CIRCA 2013

Cal. 240 PS automatic lever movement stamped with the Geneva seal, 29 jewels, blue ribbed dial, applied luminous baton numerals, fan-form power reserve indicator, two engine-turned subsidiary dials for date combined with moon phases and seconds, water-resistant-type case, screw down crown, glazed display back, stainless steel *Patek Philippe* bracelet and concealed double deployant clasp, *case, dial and movement signed*

40.5 mm. width; overall length of the bracelet approximately 220 mm.

US\$25,000-35,000

AED91,000-130,000

With *Patek Philippe* Certificate of Origin dated 14 August 2013, setting pin, leather wallet, product literature, fitted presentation box and outer packaging.



PATEK PHILIPPE

REF. 5951P

Reference 5951P was launched at Baselworld fair in 2010. Realized only with a platinum case, the following is equipped with the CHR 27-525 PS caliber, the thinnest column-wheel-controlled split-seconds chronograph movement ever crafted by Patek Philippe.

The case looks straight back to the Art Deco period with its tonneau-shape and especially with the monopusher chronograph activation. The bi-colour dial with the combination of red chronograph hands makes this reference sporty and contemporary.

We are delighted to offer this rare reference in an unused condition.







PATEK PHILIPPE
GENEVE

11 12 1 2 3 4 5 6 7 8 9 10 11 12
19 17 15 13 11 9 7 5 3 1 31 29 27 25 23 21 19
SWISS
APR

PATEK PHILIPPE

REF. 5951P



THE PROPERTY OF AN IMPORTANT PRIVATE COLLECTOR

~*114

PATEK PHILIPPE. AN EXTREMELY FINE AND RARE PLATINUM CUSHION-SHAPED PERPETUAL CALENDAR SINGLE BUTTON SPLIT SECOND CHRONOGRAPH WRISTWATCH WITH MOON PHASES, DAY AND NIGHT DISPLAY, LEAP YEAR INDICATION, BLACK DIAL AND ORIGINAL CERTIFICATE

SIGNED PATEK PHILIPPE, GENEVE, REF. 5951P-001, MOVEMENT NO. 5'251'096, CASE NO. 4'519'384, CIRCA 2011

Cal. CHR 27-525 PS Q mechanical movement stamped with the PP seal, 27 jewels, black dial, applied white gold baton numerals, three subsidiary dials for constant seconds, 60 minute register and date, four apertures for day, month, leap year indication and day and night display, fan-form sector for moon phases, red split seconds chronograph hands, cushion-shaped case, glazed display snap on back, split seconds chronograph mechanism operated through the crown and button in the band, platinum *Patek Philippe Henri Stern* buckle, *case, dial and movement signed*

37 mm. width

US\$300,000–500,000

AED1,100,000–1,800,000

With *Patek Philippe* Certificate of Origin dated 26 January 2011, additional case back, setting pin, product literature, leather wallet, slip case, presentation box and outer packaging.



•115
BAUME & MERCIER. A STAINLESS STEEL AUTOMATIC CHRONOGRAPH WRISTWATCH WITH DATE

SIGNED BAUME & MERCIER, GENEVE, CAPELAND MODEL, REF. MOA10083, CASE NO. 5'515'771, CIRCA 2011

Automatic movement, 27 jewels, brown brushed dial, Arabic numerals, eccentric aperture for date, three subsidiary dials for constant seconds, 30 minute and 12 hour registers, outer ring for tachymeter and telemetre scale, circular case, two chronograph buttons in the band, glazed display back secured by six screws, stainless steel *Baume & Mercier* double deployant clasp, *case, dial and movement signed*
 44 mm. diam.

US\$1,000–2,000

AED3,700–7,300

With *Baume & Mercier* International Guarantee certificate, service report, instruction manual, fitted presentation box and outer packaging.



•*116
MONTBLANC. A FINE STAINLESS STEEL AUTOMATIC WRISTWATCH WITH SWEEP CENTRE SECONDS AND DATE, MADE TO COMMEMORATE THE 75TH ANNIVERSARY OF THE MEISTERSTUCK COLLECTION

SIGNED MONTBLANC, MEISTERSTUCK, NO. 652/ 1924, REF. 7023, CASE NO. B013352, CIRCA 1999

Automatic jewelled movement, silvered guilloche dial, black Arabic numerals, window for date, sweep centre seconds, circular case, band engraved *Meisterstuck*, mother-of-pearl crown, snap on back, stainless steel *Montblanc* buckle, *case, dial and movement signed*
 32 mm. diam.

US\$600–1,200

AED2,200–4,400

Crafted since 1924 in Switzerland, pieces from the *Montblanc* Meisterstuck collection embody the company's quest for perfection.

MONTBLANC

NICOLAS RIEUSSEC



~*117

MONTBLANC. A FINE STAINLESS STEEL AUTOMATIC DUAL TIME SINGLE BUTTON CHRONOGRAPH WRISTWATCH WITH DATE AND TURNING DISC REGISTERS

SIGNED MONTBLANC, NICOLAS RIEUSSEC MODEL, REF. 102337, MOVEMENT NO. 112800, CASE NO. PB 296'527, 7138, CIRCA 2013

Cal. MB R200 automatic movement, 40 jewels, grey dial, Breguet numerals, silver chapter ring for time display, two rotating disc for chronograph seconds and 30 minute register, window for date, aperture for night and day indication, circular case, rectangular chronograph button in the band, glazed display back secured by six screws, stainless steel *Montblanc* deployant clasp, *case, dial and movement signed*
43 mm. diam.

US\$3,800-7,500

AED14,000-27,000

IWC

PORTUGUESE 7-DAY



~118

IWC. AN 18K WHITE GOLD AUTOMATIC WRISTWATCH WITH 7-DAY POWER RESERVE AND DATE

SIGNED IWC. PORTUGUESE 7-DAY MODEL, REF. IW500106, CASE NO. 3519248, CIRCA 2010

Cal. 51011 automatic movement, 42 jewels, grey brushed dial, two subsidiary dials for seconds and 7 day power reserve, eccentric window for date, circular case, screwed back, 18k white gold IWC deployant clasp, *case, dial and movement signed* 43 mm. diam.

US\$8,000-12,000

AED30,000-44,000

With IWC Garantie dated 10th of November 2011, extra strap, instruction manual and fitted presentation box.



A. LANGE & SÖHNE



***119**

A. LANGE & SÖHNE. A FINE AND RARE 18K WHITE GOLD BRACELET WATCH WITH DATE, POWER RESERVE, HACK FEATURE AND MOTHER-OF-PEARL DIAL

SIGNED A. LANGE & SÖHNE, GLASHÜTTE I/SA, DOPPELFEDERHAUS, LANGE 1 MODEL, REF. 160.029, MOVEMENT NO. 36'971, CASE NO. 139'157, CIRCA 2008

Cal. L901.4 mechanical movement, 53 jewels, mother-of-pearl dial, eccentric time display, applied lozenge and roman numerals, large double apertures for date, fan-form power reserve indication, subsidiary seconds, circular case, glazed display back secured by six screws, 18k white gold *A. Lange & Söhne* bracelet and clasp, *case, dial and movement signed*

38 mm. diam.; overall length approximately 195 mm.

US\$25,000–35,000

AED91,000–130,000

With *Lange & Söhne* International Warranty dated 28 August 2008, fitted presentation box and outer packaging.

Established in 1845 in Saxony by Ferdinand A. Lange, the German manufacture A. Lange & Söhne was built with the vision of producing the most technical and sought-after timepieces in the world. After a 40-year hiatus caused by the Second World War, Walter Lange decided to revive the brand and its vision, giving a new status to German mechanical watchmaking.

BREGUET

MARINE



***120**

BREGUET. A LADY'S FINE 18K GOLD AND DIAMOND-SET WRISTWATCH WITH SWEEP CENTRE SECONDS, DATE, MOTHER-OF-PEARL CHAPTER RING AND BRACELET

SIGNED BREGUET, AUTOMATIQUE, HORLOGER DE LA MARINE, MARINE MODEL, REF. 8401BA/52/A41, CASE NO. 4858D, CIRCA 2008

Automatic jewelled movement, silvered engine-turned dial with mother-of-pearl chapter ring, Roman and diamond-set numerals, window for date, sweep centre seconds, circular case, diamond-set bezel and lugs, back secured by six screws, 18k gold and diamond-set *Breguet* bracelet and 18k gold double deployant clasp, *case, dial and movement signed* 27 mm. diam.; overall length approximately 180 mm.

US\$8,000-12,000

AED30,000-44,000

With *Breguet* sales tag, fitted presentation box and outer packaging.

BREGUET

MARINE



***121**

BREGUET. A LADY'S 18K WHITE GOLD AUTOMATIC WRISTWATCH WITH SWEEP CENTRE SECONDS, DATE AND BRACELET

SIGNED BREGUET, AUTOMATIQUE, HORLOGER DE LA MARINE, MARINE MODEL, REF. 8400BB/12/B40, CASE NO. 2046G, CIRCA 2000

Automatic jewelled movement, engine-turned white dial with silvered chapter ring, Roman numerals, sweep centre seconds, window for date, circular case, back secured by six screws, 18k white gold *Breguet* bracelet and double deployant clasp, *case, dial and movement signed* 26 mm. diam.; Overall length approximately 165 mm.

US\$7,000–10,000

AED26,000–36,000

With *Breguet* sales tag.

BREGUET



•122

BREGUET. A STAINLESS STEEL AUTOMATIC WRISTWATCH WITH DATE, SWEEP CENTRE SECONDS, ALARM AND BRACELET

SIGNED BREGUET, TYPE XX, TRANSATLANTIQUE ALARM MODEL, NO. 60040, REF. 3860, CIRCA 2001

Automatic movement, black dial, Arabic numerals, alarm indicated by central hand and inner ring, window for date, sweep centre seconds, circular case, rotating bezel calibrated for 60 units, two screw down crowns in the band for alarm and time setting, screw back, stainless steel *Breguet* bracelet and concealed deployant clasp, *case, dial and movement signed* 38 mm. diam.; overall length approximately 165 mm.

US\$4,000-6,000

AED15,000-22,000

With *Breguet* fitted presentation box and outer packaging.



123

BREGUET. A STAINLESS STEEL AUTOMATIC WRISTWATCH WITH SWEEP CENTRE SECONDS AND DATE

SIGNED BREGUET, MARINE GRANDE DATE MODEL, REF. 5817, CASE NO. 1495W, CIRCA 2008

Cal. 51766 automatic movement, 35 jewels, white engine turned dial with silvered chapter ring, applied blue Roman numerals, sweep centre seconds, large double windows for date, milled band, circular case, glazed display back secured by six screws, screw down crown, stainless steel *Breguet* deployant clasp, *case, dial and movement signed* 40 mm. diam.

US\$5,000-9,000

AED19,000-33,000

With *Breguet* fitted presentation box and undated warrantee.

BREGUET



~*124

BREGUET. A FINE 18K WHITE GOLD CHRONOGRAPH WRISTWATCH

SIGNED BREGUET, CLASSIQUE CHRONOGRAPH MODEL
REF. 3237BB, CASE NO. 2806 A, CIRCA 2005

Mechanical jewelled movement, engine-turned silvered dial, applied Roman numerals on silver brushed chapter ring, two subsidiary dials for constant seconds and 30 minute register, circular case, stepped bezel, ribbed sides, two chronograph buttons in band, glazed display snap on back, 18k white gold Breguet deployant clasp, *case, dial and movement signed* 35 mm. diam.

US\$8,000-12,000

AED 30,000-44,000



BREGUET

TOURBILLON PERPETUAL



~*125

BREGUET. A FINE AND RARE 18K GOLD PERPETUAL CALENDAR TOURBILLON WRISTWATCH WITH RETROGRADE DATE AND LEAP YEAR INDICATION

SIGNED BREGUET, BREVET DU 7 MESSIDOR AN 9, CLASSIQUE COMPLICATIONS MODEL, REF. 3757, MOVEMENT NO. 809, CASE NO. 1236 K, CIRCA 2002

Cal 558 mechanical movement, 21 jewels, aperture for one minute tourbillon carriage visible through silvered engine-turned dial, eccentric silvered chapter ring with Roman numerals for time display, engine-turned fan-form sector for retrograde date, two subsidiary dials for day and month combined with rotating disc for leap year indication, circular case, milled band, glazed display snap on back, 18k gold *Breguet* deployant clasp, *case, dial and movement signed* 40 mm. diam.

US\$60,000-80,000

AED220,000-290,000

BVLGARI



•*126

BULGARI. A LADY'S STAINLESS STEEL RECTANGULAR WRISTWATCH WITH BRACELET

SIGNED BULGARI, RETTANGOLO MODEL, CASE NO. RT39 S J25438, CIRCA 2006

Quartz movement, black textured dial with applied Arabic and baton numeral, inner seconds division, rectangular case, bottom shoulder engraved *Bulgari*, back secured by four screws, stainless steel *Bulgari* bracelet double deployant clasp, *case, dial and movement signed* 27 mm. width

US\$2,000-3,000

AED7,300-11,000



•*127

BULGARI. AN 18K GOLD RECTANGULAR WRISTWATCH WITH BRACELET

SIGNED BULGARI, RETTANGOLO MODEL, REF. RT 39 G, CASE NO. L902, CIRCA 2000

Quartz jewelled movement, white dial, baton and Arabic numerals, rectangular case, back secured by four screws, 18k gold *Bulgari* bracelet and concealed double deployant clasp, *case, dial and movement signed*

21 mm. width; overall length approximately 165 mm.

US\$4,000-6,000

AED15,000-22,000



•*128

BULGARI. A LADY'S 18K GOLD BANGLE WATCH

SIGNED BULGARI, BULGARI-BULGARI, TUBOGAS MODEL, REF. BB 19 2T, CASE NO. F 62268, CIRCA 1995

Quartz movement, black dial, Arabic and baton numerals, circular case, snap on back, bezel engraved *Bulgari Bulgari*, 18k gold *Bulgari* bangle, *case, dial and movement signed*
19 mm. diam.; overall length approximately 150 mm.

US\$3,000–5,000

AED11,000–18,000



~•*129

CARTIER. A LADY'S FINE 18K PINK GOLD WRISWATCH

SIGNED CARTIER, BALLON BLEU MODEL, REF. 3007100738QX, CASE NO. 100732QX, CIRCA. 2010

Quartz movement, silver brushed dial, Roman numerals, circular case, sapphire-set crown, 18k pink gold *Cartier* buckle, *case, dial and movement signed*
27 mm. diam.

US\$4,000–6,000

AED15,000–22,000

With *Cartier* Certificate, Guarantee dated 16 October 2010, CD and fitted presentation box.

CHOPARD

HAPPY SPORT



•*130

CHOPARD. A LADY'S FINE 18K PINK GOLD AND DIAMOND-SET CHRONOGRAPH WRISTWATCH WITH DATE AND MOTHER-OF-PEARL DIAL

SIGNED CHOPARD, HAPPY SPORT MODEL, CASE NOS. 1'503'364 & 1269, CIRCA 2005

Quartz movement, mother-of-pearl dial, applied baton and Roman numerals, three subsidiary dials for constant seconds, 30 minute and 10 hour registers, window for date, five floating diamond collets, circular case, two rectangular chronograph buttons in the band, diamond-set bezel, sapphire set crown, back secured by eight screws, 18K pink gold *Chopard* buckle, case, dial and movement signed
39 mm. diam.

US\$4,000-6,000

AED15,000-22,000

CARTIER



~*131

CARTIER. A LADY'S FINE 18K GOLD AND DIAMOND-SET WRISTWATCH WITH SWEEP CENTRE SECONDS AND DATE

SIGNED CARTIER, DIABOLO LOUIS CARTIER MODEL, REF. 1430, CASE NO. CC21952, CIRCA 2003

Quartz movement, matte white dial, Roman numerals, window for date, sweep centre seconds, circular case, pavé-set diamond bezel, diamond-set crown and lugs, back secured by six screws, 18k gold *Cartier* deployant buckle, *case, dial and movement signed* 32 mm. diam.

US\$4,000-6,000

AED15,000-22,000



~*132

CARTIER. A LADY'S 18K GOLD AND DIAMOND-SET CHRONOGRAPH WRISTWATCH WITH DATE

SIGNED CARTIER, PASHA MODEL, REF. 1354 1, CASE NO. MG214653, CIRCA 1998

Quartz movement, silver textured dial, applied gold dot numerals, three subsidiary dials for 30 minute, 12 hour register and date, circular case, pavé-set diamond bezel, diamond-set chronograph buttons and protective crown cap, back secured by eight screws, 18k gold *Cartier* deployant buckle, *case, dial and movement signed* 35 mm. diam.

US\$4,000-6,000

AED15,000-22,000

CHAUMET



***133**

CHAUMET. A LADY'S 18K WHITE GOLD AND DIAMOND-SET CHRONOGRAPH WRISTWATCH WITH DATE AND MOTHER-OF-PEARL DIAL

SIGNED CHAUMET, PARIS, CASE NO. 23E0247, CIRCA 2000

Quartz movement, blue mother-of-pearl dial, applied baton and dagger numerals, three subsidiary subdials for constant seconds, 12 hour and 10 minute registers, window for date, circular case, diamond-set bezel, two sapphire-set chronograph buttons in the band, sapphire-set crown, back secured by six screws, 18k white gold *Chaumet* buckle, case, dial and movement signed
38 mm. diam.

US\$3,000-5,000

AED11,000-18,000



***134**

CHAUMET. A LADY'S 18K GOLD AND DIAMOND-SET CHRONOGRAPH WRISTWATCH WITH DATE

SIGNED CHAUMET, PARIS, CASE NO. 21E0138, CIRCA 1995

Quartz movement, silvered engine-turned dial, applied baton and dagger numerals, three subsidiary subdials for constant seconds, 10 minute and 12 hour registers, window for date, circular case, diamond-set bezel, two chronograph buttons in the band, diamond-set crown, back secured by six screws, 18k gold *Chaumet* buckle, case, dial and movement signed
38 mm. diam.

US\$3,000-5,000

AED11,000-18,000

VAN CLEEF & ARPELS



***135**

VAN CLEEF & ARPELS. A LADY'S FINE 18K GOLD AND DIAMOND-SET BRACELET WATCH
SIGNED VAN CLEEF & ARPELS, CADENAS MODEL, CASE NO. 150609, CIRCA 2000

Quartz movement, silvered engine-turned dial enclosed in a part diamond-set padlock-shaped case, integrated 18k gold and part diamond-set *Van Cleef & Arpels* bracelet and lock, case, dial and movement signed
25 mm. width; overall length approximately 170 mm.

US\$8,000–12,000

AED30,000–44,000

With *van Cleef & Arpels* fitted presentation box and outer packaging.



***136**

CHOPARD. A LADY'S FINE 18K WHITE GOLD, DIAMOND AND SAPPHIRE-SET SQUARE WRISTWATCH

SIGNED CHOPARD, ICE CUBE MODEL, REF. 513/6858/8-23, CASE NOS. 7424/8 AND 907679

Quartz movement, pavé-set diamond dial, square case, pavé-set sapphire bezel, back secured by four screws, 18k white gold *Chopard* buckle, *case, crystal on case and movement signed* 30 mm. width

US\$3,000–5,000

AED11,000–18,000

~*137

CHOPARD. A LADY'S FINE 18K WHITE GOLD, SAPPHIRE AND DIAMOND-SET RECTANGULAR WRISTWATCH WITH MOTHER-OF-PEARL DIAL

SIGNED CHOPARD, GENEVE, YOUR HOUR MODEL, REF. 17/3451/8-23, CASE NOS. 531'977 AND 459 1, CIRCA 2000

Quartz movement, mother-of-pearl dial with pavé-set diamond centre, Roman numerals, rectangular case, pavé-set sapphire bezel and lugs, band engraved *Chopard*, back secured by four screws, *crystal on case and movement signed* 28 mm. width

US\$3,000–5,000

AED11,000–18,000

With *Chopard* fitted presentation box.



VAN CLEEF & ARPELS

***138**

VAN CLEEF & ARPELS. A LADY'S VERY FINE 18K WHITE GOLD AND DIAMOND-SET RECTANGULAR WRISTWATCH WITH CONCEALED MOTHER-OF-PEARL DIAL

SIGNED VAN CLEEF & ARPELS, SECRET DENTELLE MODEL, REF. WRWF01E8, CASE NO. HH14311, CIRCA 2005

Quartz movement, concealed mother-of-pearl dial, diamond dot numerals, rectangular-shaped case, diamond-set bezel and lugs, crown with clover diamond-set charm, back secured by four screws, 18k white gold and diamond-set signed 28 mm. length.

US\$15,000-20,000

AED55,000-73,000

With Van Cleef & Arpels International Certificate of Authenticity and Warranty, Instruction Manual and fitted presentation box.





~*139

AUDEMARS PIGUET. A LADY'S FINE STAINLESS STEEL AND DIAMOND-SET LIMITED EDITION AUTOMATIC CHRONOGRAPH WRISTWATCH WITH DATE

SIGNED AUDEMARS PIGUET, LADYCAT ROYAL OAK OFFSHORE MODEL, NO. 004/150, REF. 26266SK, CASE NO. G43871-0004, CIRCA 2009

Cal. 2385 automatic movement, 37 jewels, black textured dial, pink Arabic numerals, three white subsidiary dials for constant seconds, 30 minute and 12 hour register, window for date, tonneau-shaped water resistant type case, diamond-set bezel secured by eight screws, screw down crown, back secured by eight screws, 18k white gold *Audemars Piguet* deployant clasp, *case, dial and movement signed* 37 mm. diam.

US\$8,000-12,000

AED30,000-44,000

With *Audemars Piguet*, undated warranty, instruction manual, leather wallet, fitted presentation box, box key, outer packaging and one additional pink alligator strap.

***140**

AUDEMARS PIGUET. AN 18K WHITE GOLD SET, INCLUDING AN OVAL AUTOMATIC WRISTWATCH WITH DATE AND BRACELET, A PAIR OF CUFFLINKS AND A RING, MADE FOR THE SULTANATE OF OMAN

SIGNED AUDEMARS PIGUET, MILLENNARY MODEL, REF. 15142BC. OO.1136BC.05, CASE NO. F 58'198, CIRCA 2005

Automatic jewelled movement, silver dial with Sultan *Qaboos bin Said Al Said of Oman*, diamond-set numerals, sweep centre seconds, window for date, oval shaped-case, back secured by six screws, 18k white gold *Audemars Piguet* bracelet and deployant clasp, case, dial and movement signed 40 mm. width

US\$8,000-12,000

AED30,000-44,000

With *Audemars Piguet* undated Certificat d'Origine et de Garantie, fitted presentation box and outer packaging.

The present set was made to commemorate the 35th anniversary of HH Sultan Qaboos Bin Said Al Said's accession to power.



•*141

AUDEMARS PIGUET, A FINE AND ELEGANT PAIR OF 18K WHITE GOLD OVAL CUFFLINKS WITH MOTHER-OF PEARL CENTRE

SIGNED AUDEMARS PIGUET, MILLENNARY MODEL, REF. L3650, CIRCA 2010

Each cufflink with mother-of-pearl centre, oval-shaped, signed *Audemars Piguet* 25 mm. width

US\$2,000-3,000

AED7,300-11,000

With *Audemars Piguet Joaillerie* Certificate of Origin, sales tag, fitted presentation box and outer packaging.



141



142

AUDEMARS PIGUET. A VERY FINE 18K WHITE GOLD AND DIAMOND SET TONNEAU-SHAPED BRACELET WATCH
SIGNED AUDEMARS PIGUET, NO. B 77445, CIRCA 1985

Quartz movement, black textured dial, applied diamond-set numerals, tonneau-shaped case, back secured by six screws, stainless steel *Audemars Piguet* bracelet and concealed deployant clasp, *case, dial and movement signed*
26 mm width; overall length approximately 170 mm.

US\$5,000–8,000

AED19,000–29,000

With *Audemars Piguet* fitted presentation box and outer packaging.

AUDEMARS PIGUET



•143

AUDEMARS PIGUET. A FINE 18K GOLD AND STAINLESS STEEL TONNEAU-SHAPED BRACELET WATCH

SIGNED AUDEMARS PIGUET, NO. B85735, CIRCA 1985

Quartz movement, grey textured dial, applied gold baton numerals, tonneau-shaped case, back secured by six screws, 18k gold and stainless steel *Audemars Piguet* bracelet and deployant clasp, *case, dial and movement signed*

26 mm width; overall length approximately 190 mm.

US\$3,500–5,500

AED13,000–20,000



•144

AUDEMARS PIGUET. A FINE STAINLESS STEEL TONNEAU-SHAPED BRACELET WATCH

SIGNED AUDEMARS PIGUET, NO. B26498, CIRCA 1985

Quartz movement, grey textured dial, applied baton numerals, tonneau-shaped case, back secured by six screws, stainless steel *Audemars Piguet* bracelet and deployant clasp, *case, dial and movement signed*

26 mm width; overall length approximately 180 mm.

US\$3,000–5,000

AED11,000–18,000

AUDEMARS PIGUET

ROYAL OAK



•*145
AUDEMARS PIGUET. A LADY'S FINE STAINLESS STEEL BRACELET WATCH

SIGNED AUDEMARS PIGUET, QUARTZ, ROYAL OAK MODEL, NO. 6, CIRCA 1990

Quartz movement, black dial, applied luminous baton numerals, outer fifth of a minute division, window for date, tonneau-shaped case, octagonal screwed bezel secured by eight screws, back secured by eight screws, stainless steel *Audemars Piguet* bracelet and deployant clasp, *case, dial and movement signed*
24 mm. width; overall length approximately 170 mm

US\$2,000–3,000

AED7,300–11,000



***146**

AUDEMARS PIGUET. A FINE AND RARE STAINLESS STEEL AND DIAMOND-SET AUTOMATIC BRACELET WATCH WITH DAY, DATE AND MOON PHASES

SIGNED AUDEMARS PIGUET, ROYAL OAK MODEL, NO. 878, CIRCA 2000

Automatic jewelled movement, grey dial, applied diamond-set numerals, three subsidiary dials for day, date and moon phases, tonneau-shaped water-resistant-type case, octagonal screwed bezel secured by eight screws, screw down crown, back secured by eight screws, stainless steel *Audemars Piguet* bracelet and deployant clasp, *case, dial and movement signed*
36 mm. width; overall length approximately 170 mm.

US\$5,000–8,000

AED19,000–29,000

AUDEMARS PIGUET

OFFSHORE TRIPLE CALENDAR

147

AUDEMARS PIGUET. A FINE AND RARE STAINLESS STEEL TONNEAU-SHAPED AUTOMATIC COMPLETE CALENDAR BRACELET WATCH

SIGNED AUDEMARS PIGUET, ROYAL OAK OFFSHORE MODEL, NO. 536, CASE NO. D98726, CIRCA 2000

Automatic jewelled movement, blue textured dial, applied baton numerals, outer date ring with Arabic numerals, white central date hand, aperture for day and month, subsidiary dial for constant seconds, tonneau-shaped water-resistant type-case, screw down crown, back secured by eight screws, stainless-steel *Audemars Piguet* bracelet and concealed double deployant clasp, *case, dial and movement signed*

37 mm. width; overall length approximately 200 mm.

US\$8,000-10,000

AED30,000-36,000

With an *Audemars Piguet* fitted presentation box and outer packaging.



••148

AUDEMARS PIGUET. A PAIR OF STAINLESS STEEL OCTAGONAL CUFFLINKS

SIGNED AUDEMARS PIGUET, ROYAL OAK OFFSHORE MODEL, REF. L6742, CIRCA 2010

Black textured centres, octagonal bezels, each secured by eight screws, signed *Audemars Piguet*
18 mm. width

US\$500-1,000

AED1,900-3,600

With *Audemars Piguet Joaillerie* Certificate of Origin, sales tag and fitted presentation box.



AUDEMARS PIGUET

OFFSHORE



*149

AUDEMARS PIGUET. A RARE AND LARGE STAINLESS STEEL AUTOMATIC CHRONOGRAPH WRISTWATCH WITH DATE

SIGNED AUDEMARS PIGUET, ROYAL OAK OFFSHORE TOUR AUTO MODEL, NO. 45, REF. 26175ST, MOVEMENT NO. 774'629, CASE NO. H 03415, CIRCA 2008

Cal. 3126/3840 automatic jewelled movement, grey textured dial, white Arabic numerals, silvered and orange outer ring for tachymeter scale, three silvered subsidiary dials for constant seconds, 30 minute and 12 hour registers, window for date, tonneau-shaped water-resistant type case, two rubber clad chronograph buttons in the band, screw down crown, back secured by eight screws, *Audemars Piguet* stainless steel deployant clasp, *case, dial and movement signed* 42 mm. bezel width.

US\$10,000–15,000

AED37,000–55,000

With *Audemars Piguet* warrantee dated September 2011, instruction manual, fitted presentation box, outer packaging.



~*150

AUDEMARS PIGUET. A RARE AND LARGE STAINLESS STEEL AUTOMATIC CHRONOGRAPH WRISTWATCH WITH DATE

SIGNED AUDEMARS PIGUET, ROYAL OAK OFFSHORE, VOLCANO MODEL, NO. 3845, REF. 26170ST, MOVEMENT NO. 867'348, CASE NO. G33318, CIRCA 2008

Cal. 3126/3840 automatic movement, 59 jewels, black textured dial, orange Arabic numerals, outer tachymeter scale, three subsidiary dials for constant seconds, 30 minutes and 12 hours register, window for date, large tonneau-shaped case, octagonal bezel secured by eight screws, screw down crown, two chronograph buttons in the band, back secured by eight screws, stainless steel *Audemars Piguet* deployant clasp, *case, dial and movement signed* 42 mm. bezel width.

US\$9,000–13,000

AED33,000–47,000

With *Audemars Piguet* warrantee dated 3 July 2009, Authentication Certificate, fitted presentation box, outer packaging and other accessories.

AUDEMARS PIGUET

BUMBLE BEE



~*151

AUDEMARS PIGUET. A RARE AND LARGE FORGED CARBON AND CERAMIC AUTOMATIC CHRONOGRAPH WRISTWATCH WITH DATE

SIGNED AUDEMARS PIGUET, ROYAL OAK OFFSHORE BUMBLE BEE MODEL, REF. 26176FO, NO. 0632, CASE NO. G79179, CIRCA 2009

Cal. 3126/3840 automatic movement, 59 jewels, black textured dial, applied yellow Arabic numerals, magnified window for date, three subsidiary dials for constant seconds, 30 minute and 12 hour register, outer yellow tachymeter scale, oversized tonneau-shaped water-resistant-type case, octagonal ceramic bezel secured by eight screws, screw down crown, back secured by eight screws, two chronograph buttons in the band, titanium *Audemars Piguet* deployant clasp, case, dial and movement signed
42 mm. bezel width.

US\$15,000–25,000

AED55,000–91,000

AUDEMARS PIGUET

OFFSHORE GRAND PRIX PLATINUM

NO.75/75



***152**

AUDEMARS PIGUET. A RARE AND VERY FINE OVERSIZED PLATINUM AND CERAMIC LIMITED EDITION AUTOMATIC CHRONOGRAPH WRISTWATCH WITH DATE

SIGNED AUDEMARS PIGUET, ROYAL OAK OFFSHORE GRAND PRIX LIMITED EDITION MODEL, NO. 75/75, REF. 26290PO.OO.A001VE.01, CASE NO. G97587, CIRCA 2010

Automatic movement, 59 jewels, blue textured dial, black chapter ring with applied indexes, outer tachymeter scale, three engine-turned subsidiary dials for constant seconds, 30 minute and 12 hour registers, magnified window for date, oversized tonneau-shaped water-resistant type case, screw down crown, two chronograph buttons in the band, glazed display back secured by eight screws, large platinum *Audemars Piguet* buckle, case, dial and movement signed 44 mm. bezel width.

US\$50,000–80,000

AED190,000–290,000

AUDEMARS PIGUET

OFFSHORE GRAND PRIX CARBON

More so than perhaps any other firm, Audemars Piguet is the story of two watchmaking families. Started in the Valle de Joux, the Audemars and Piguet families both worked as finishers supplying high-quality mechanisms to larger watch companies. In 1875, Jules Audemars and Edward-Auguste Piguet combined forces to form Audemars Piguet. They produced the first Grande Complication pocket watch in 1882, and the first split-second chronograph fitted with a dial designed by Audemars was sold in New York in 1892.

In 1924, the first moon phase wristwatches with full perpetual calendar debuted, 1934 marked the production of the first hand-sculpted skeleton wristwatch. Throughout the later twentieth century, Audemars Piguet excelled at producing increasingly thin, flat wristwatches, including the first luxury sports watch, the Royal Oak, in 1972. Audemars Piguet remains one of the few watch companies that is still held by the families of their founding partners.



***153**

AUDEMARS PIGUET. A RARE AND FINE OVERSIZED FORGED CARBON, TITANIUM AND CERAMIC LIMITED EDITION CHRONOGRAPH WRISTWATCH WITH DATE

SIGNED AUDEMARS PIGUET, ROYAL OAK OFFSHORE GRAND PRIX LIMITED EDITION MODEL, NO. 353/1750, REF. 26290IO.OO.A001VE.01, MOVEMENT NO. 770026, CASE NO. G 88876-0353, CIRCA 2009

Cal. 3126/3840 automatic movement, 59 jewels, black dial with red textured centre, white dagger numerals, outer tachymetre scale, three engine turned subsidiary dials for constant seconds, 30 minute and 12 hour registers, magnified window for date, oversized tonneau-shaped water-resistant-type case, black ceramic and forged carbon bezel secured by eight screws, glazed display back secured by eight titanium screws, black titanium screw down crown, two rectangular titanium and ceramic chronograph buttons in the band, large titanium *Audemars Piguet* buckle, case, dial and movement signed 44 mm. bezel width.

US\$20,000-30,000

AED73,000-110,000

With *Audemars Piguet* warrantee dated 21 April 2010, Authentication Certificate, instruction manual, fitted presentation box, outer packaging.



AUDEMARS PIGUET

OFFSHORE SURVIVOR NO. 30/1000



***154**

**AUDEMARS PIGUET. A RARE OVERSIZED BLACKENED TITANIUM LIMITED EDITION
AUTOMATIC CHRONOGRAPH WRISTWATCH WITH DATE**

SIGNED AUDEMARS PIGUET, ROYAL OAK OFFSHORE SURVIVOR MODEL, LIMITED EDITION, NO. 30/1000,
REF. 2616510, CASE NO. G45995, CIRCA 2008

Cal. 3126/3840 automatic movement, 59 jewels, black textured dial, applied baton numerals,
tachymeter scale, three subsidiary engine-turned dials for constant seconds, 30 minute and 12
hour registers, window for date, oversized tonneau-shaped case, octagonal screwed ceramic
bezel, back secured by eight screws, screw down crown, protective bridges to the two
chronograph buttons in the band, blackened titanium *Audemars Piguet* buckle, case, dial and
movement signed
42 mm. width

US\$25,000–35,000

AED91,000–130,000

With *Audemars Piguet* Certificate of Warranty and Authenticity, instruction manual, fitted presentation
box and outer packaging.

HUBLOT

F1 KING POWER CERAMIC NO. 99/500



***155**

HUBLOT. A FINE TITANIUM AND CERAMIC LIMITED EDITION AUTOMATIC CHRONOGRAPH WRISTWATCH WITH DATE

SIGNED HUBLOT, BIG BANG F1 KING POWER CERAMIC MODEL, NO. 99/500, CASE NO. 908'000, CIRCA 2010

Cal. HUB4100 automatic movement, 27 jewels, black dial, baton numerals, three subsidiary dials for constant seconds, 30 minute and 12 hour registers, window for date, tonneau-shaped case, circular bezel secured by six screws, two chronograph buttons in the band, glazed display back secured by eight screws, titanium and ceramic *Hublot* deployant clasp, *case, dial and movement signed*
46 mm. width

US\$8,000-12,000

AED30,000-44,000

With *Hublot* Certificate of Authenticity, product literature, instruction manual, fitted presentation box and outer packaging.

HUBLOT

BIG BANG



***156**

HUBLOT. A FINE TITANIUM AND DIAMOND-SET AUTOMATIC CHRONOGRAPH WRISTWATCH WITH DATE

SIGNED HUBLOT, BIG BANG MODEL, CASE NO. 769'054, CIRCA 2010

Cal. 7750 automatic movement, 25 jewels, light grey matte dial, applied Arabic and baton numerals, three subsidiary dials for constant seconds, 30 minute and 12 hour registers, eccentric window for date, tonneau shaped case, pavé-set diamond circular bezel, two rectangular chronograph buttons in the band, glazed display back secured by six screws, PVD-coated stainless steel *Hublot* deployant clasp, *case, dial and movement signed*
42 mm. width

US\$6,500-10,000

AED24,000-36,000

HUBLOT

BIG BANG KING



***157**

HUBLOT. A FINE AND LARGE PALLADIUM AND CERAMIC, DIAMOND, BLACK DIAMOND AND RUBY-SET AUTOMATIC WRISTWATCH WITH SWEEP CENTRE SECONDS AND DATE
SIGNED HUBLOT, GENEVE, BIG BANG KING MODEL, NO. 322, REF. 322.LX.1023.RX.0924,
CASE NO. 686'471, CIRCA 2010

Automatic jewelled movement, black dial, applied luminous baton and triangular numerals, luminous hands, sweep centre seconds, window for date, tonneau-shaped-case, baguette-cut diamond, black diamond and ruby-set unidirectional revolving bezel, black ceramic inserts to the band, back secured by eight screws, Palladium and black PVD-coated stainless steel *Hublot* deployant clasp, *case, dial and movement signed*
46 mm. width

US\$19,000-30,000

AED70,000-110,000



ROGER DUBUIS



300m/990ft



022/280

TOURBILLON DIVER

ROGER DUBUIS

EASY DIVER TOURBIDIVER

Founded in 1995 through an alliance between the watchmaker Roger Dubuis and the designer Carlos Dias, the company quickly thrived through its balance between traditional watchmaking and avant-garde design.

A Roger Dubuis watch is a bold choice. Far from being solely an aesthetic statement, Roger Dubuis is the only manufacture where all developed watches are certified with the prestigious Geneva seal. To achieve such a result, a minimum of 7 months, as well as rigorous tests, will be required to craft and develop a Roger Dubuis timepiece. As a conclusion of such a process, the company has been able to offer watches of technical mastery allied with peerless designs, able to satisfy the most exigent watch enthusiasts.



***158**

ROGER DUBUIS. A LARGE AND IMPRESSIVE TITANIUM LIMITED EDITION SKELETONIZED TOURBILLON WRITSWATCH

SIGNED ROGER DUBUIS, EASY DIVER TOURBIDIVER MODEL, NO.022/280, REF. RDDBSE0185, CIRCA 2005

Cal. RD02 SQ3 mechanical movement, stamped Geneva seal, one minute flying tourbillon carriage, carbon fiber skeletonized dial, applied ruby dot numerals, tonneau-shaped case, revolving bezel calibrated for 60 units, glazed display back secured by eight screws, *Roger Dubuis* deployant clasp, *case, dial and movement signed* 46 mm. diam.

US\$30,000-40,000

AED110,000-150,000

ROGER DUBU

horloger



11/28

ROGER DUBUIS

KING SQUARE TOURBILLON



***159**

ROGER DUBUIS. A FINE AND RARE 18K WHITE GOLD LIMITED EDITION SQUARE SKELETONIZED TOURBILLON WRISTWATCH

SIGNED ROGER DUBUIS, KING SQUARE TOURBILLON MODEL, NO. 11/28, MOVEMENT NO. 38, CIRCA 2005

Mechanical jewelled movement stamped with the Geneva seal, visible one-minute flying tourbillon carriage, Roman numerals, square case, glazed display back secured by eight screws, 18k white gold *Roger Dubuis* buckle, case, dial and movement signed
40 mm. width

US\$35,000–50,000

AED130,000–180,000

With *Roger Dubuis* fitted presentation box.

PIAGET



***160**

PIAGET. A LADY'S 18K WHITE GOLD AND DIAMOND-SET SQUARE BRACELET WATCH

SIGNED PIAGET, CASE NOS. P10396 AND 948562, CIRCA 2004

Quartz jewelled movement, pavé-set diamond dial, square case, pavé-set diamond bezel, back secured by four screws, 18k white gold and diamond-set *Piaget* buckle, *case, dial and movement signed*

18 mm. width

US\$2,000–3,000

AED7,300–11,000

CORUM



***161**

CORUM. A LADY'S FINE 18K WHITE GOLD AND DIAMOND-SET LOZANGE-SHAPED WRISTWATCH WITH MOTHER-OF-PEARL AND BLACK LAQUERED DIAL

SIGNED CORUM, REF. 137'250'69, CASE NO.774658, CIRCA 2000

Quartz movement, pavé-set diamond dial with mother of pearl and black lacquered centre, lozange-shaped case, pavé-set diamond bezel and band, back secured by eight screws, onyx-set crown, 18k white gold *Corum* buckle, *case, dial and movement signed*
33 mm. width

US\$3,000–5,000

AED11,000–18,000

With *Corum* International Warranty dated 18th of March 2003, fitted presentation box and outer packaging.

The present watch is set with 444 diamonds weighing approximately 5.75 carats.

CHOPARD



~*162

CHOPARD. A LADY'S FINE AND ATTRACTIVE 18K WHITE GOLD OVAL WRISTWATCH

SIGNED CHOPARD, HAPPY SPIRIT MODEL, REF. 20/7193 CASE NOS. 560770 AND 745 1, CIRCA 2000

Quartz movement, black dial with floating white gold oval rings and a floating diamond collet, oval case, snap on back, 18k white gold *Chopard* buckle, case, dial and movement signed 39 mm. length.

US\$2,000-3,000

AED7,300-11,000



~*163

CHOPARD. AN 18K WHITE GOLD AND DIAMOND-SET TONNEAU-SHAPED WRISTWATCH

SIGNED CHOPARD, REF.17/3598, CASE NOS. 577'461 AND 4505 1, CIRCA 2000

Quartz movement, black dial, diamond-set numerals, tonneau-shaped case, diamond-set bezel and crown, back secured by four screws, 18k white gold *Chopard* buckle, case, dial and movement signed 43 mm. width

US\$4,000-6,000

AED15,000-22,000

CHOPARD



~*164

CHOPARD. A LADY'S VERY FINE AND ELEGANT 18K WHITE GOLD AND DIAMOND-SET FLOWER-SHAPED WRISTWATCH

SIGNED CHOPARD, GENÈVE, CASE NO. A 46567 AND 915 1, CIRCA 1990

Quartz jewelled movement, pavé-set diamond dial, flower-shaped case, pavé-set bezel and band, back secured by six screws, 18k white gold *Chopard* buckle, case, dial and movement signed 35 mm. diam.

US\$10,000–15,000

AED37,000–55,000

With a *Chopard* fitted pouch.





Φ*165

ROLEX. A STAINLESS STEEL AND 18K GOLD AUTOMATIC WRISTWATCH WITH SWEEP CENTRE SECONDS, DATE AND BRACELET

SIGNED ROLEX, OYSTER PERPETUAL DATE, SUBMARINER MODEL, REF. 116613, CASE NO. 8D3619H5, CIRCA 2012

Cal. 3135 automatic movement, 31 jewels, black dial, luminous dot, baton and dagger numerals, sweep centre seconds, magnified window for date, stainless steel tonneau-shaped water-resistant-type case, 18k gold revolving bezel calibrated for 60 units, 18k gold screw down crown, stainless steel screw down crown, stainless steel and 18k gold *Rolex Oyster* bracelet and deployant clasp, *case, dial and movement signed*

40 mm. diam.; overall length approx. 205 mm.

US\$5,000–8,000

AED19,000–29,000

With *Rolex Garantie Internationale* dated 3 October 2013, instruction manual, product literature, card holder, fitted presentation box and outer packaging.



Φ*166

ROLEX. A STAINLESS STEEL AND PLATINUM AUTOMATIC WRISTWATCH WITH SWEEP CENTRE SECONDS, DATE AND BRACELET

SIGNED ROLEX, OYSTER PERPETUAL DATE, YACHT-MASTER MODEL, REF. 168622, CASE NO. F002277, CIRCA 2003

Cal. 2235 automatic movement, 31 jewels, platinum dial, applied dot, dagger and baton numerals, sweep centre seconds, magnified window for date, tonneau-shaped water-resistant-type case, revolving platinum bezel calibrated for 60 units, screw down crown, screw back, stainless steel *Rolex Oyster* bracelet and deployant clasp, *case, dial and movement signed*

35 mm. diam.; overall length approximately 195 mm.

US\$3,200–5,000

AED12,000–18,000

With *Rolex Attestation de Chronomètre Officiel* dated May 2005, product literature, sale tags, leather wallet, fitted presentation box and outer packaging.



166

16862200
F002277

ROLEX



ROLEX



ROLEX



•Φ167
ROLEX. A STAINLESS STEEL WRISTWATCH WITH SWEEP CENTRE SECONDS AND BRACELET

SIGNED ROLEX, OYSTER PERPETUAL, EXPLORER, REF. 14270, CASE NO. A816647, CIRCA 2000

Cal. 3000 automatic movement, 27 jewels, black dial, applied Arabic and baton numerals, sweep centre seconds, tonneau-shaped water-resistant-type-case, screw-down crown, screw back, stainless steel *Rolex Oyster* bracelet and deployant clasp, *case, dial and movement signed* 36 mm. diam.; overall length approximately 190 mm.

US\$2,000–3,000

AED7,300–11,000

With *Rolex* Warranty dated 9 June 2000, product literature, fitted presentation box and outer packaging.



•Φ168
ROLEX. A STAINLESS STEEL AUTOMATIC WRISTWATCH WITH SWEEP CENTRE SECONDS AND BRACELET

SIGNED ROLEX, OYSTER PERPETUAL, REF. 116000, CASE NO. M919877, CIRCA 2007

Cal. 3130 automatic movement, 31 jewels, black dial with engine-turned centre, white Arabic numerals, outer fifths of a minute division, sweep centre seconds, circular case, screw down crown, screw back, *Rolex Oyster* bracelet and deployant clasp, *case, dial and movement signed*

36 mm. diam.; overall length approximately 190 mm.

US\$3,000–5,000

AED11,000–18,000

With *Rolex* International Warranty dated 6th of decembre 2009, sales tag, product literature, fitted presentation box and outer packaging.

ROLEX

REF.18206 PLATINUM



Φ169

ROLEX. A FINE PLATINUM AND DIAMOND-SET AUTOMATIC WRISTWATCH WITH SWEEP CENTRE SECONDS, DAY, DATE AND BRACELET

SIGNED ROLEX, OYSTER PERPETUAL, DAY-DATE MODEL, REF.18206, CASE NO. A638219, CIRCA 1998

Cal. 3155 automatic movement, 31 jewels, brushed blue dial, diamond-set numerals, sweep centre seconds, aperture for day, magnified window for date, tonneau-shaped water-resistant-type case, screw down crown, screw back, platinum *Rolex President* bracelet and concealed deployant clasp, *case, dial and movement signed*
36 mm. diam.; overall length approximately 195 mm.

US\$20,000-30,000

AED73,000-110,000

With *Rolex* warranty dated 03 December 2001, literature and fitted presentation box.

ROLEX



•Φ*170

ROLEX. A STAINLESS STEEL AUTOMATIC WRISTWATCH WITH SWEEP CENTRE SECONDS AND DATE

SIGNED ROLEX, OYSTER PERPETUAL, DATEJUST MODEL, REF. 16030, CASE NO. 7'363'256, CIRCA 1982

Cal. 3035 automatic movement, 27 jewels, white dial, Roman numerals, sweep centre seconds, magnified window for date, tonneau-shaped water-resistant-type case, fluted bezel, screw down crown, screw back, stainless steel *Rolex* buckle, *case, dial and movement signed* 35 mm. diam.

US\$3,000–5,000

AED11,000–18,000

Φ171

ROLEX. A LADY'S STAINLESS STEEL AND DIAMOND-SET AUTOMATIC WRISTWATCH WITH SWEEP CENTRE SECONDS, DATE AND BRACELET

SIGNED ROLEX, DATEJUST MODEL, REF. 78274, CASE NO. Y440764, CIRCA 2002

Cal. 2235 automatic movement, 31 jewels, silvered *Rolex* dial, diamond-set numerals, sweep centre seconds, magnified window for date, tonneau-shaped water-resistant-type case, white gold fluted bezel, screw down crown, screw back, stainless steel *Rolex Jubilee* bracelet and deployant clasp, *case, dial and movement signed* 30 mm. diam.; overall length approximately 200 mm.

US\$2,500–5,000

AED9,100–18,000

With *Rolex* Attestation de Chronomètre officiel dated 17 May 2003, product literature, leather wallet, fitted presentation box and outer packaging.



ROLEX

REF. 18346 PLATINUM



Φ*172

ROLEX. A FINE PLATINUM AND DIAMOND-SET AUTOMATIC WRISTWATCH WITH SWEEP CENTRE SECONDS, DAY, DATE AND BRACELET

SIGNED ROLEX, OYSTER PERPETUAL, DAY-DATE MODEL, REF. 18346, CASE NO. W646841, CIRCA 1994

Cal. 3155 automatic movement, 31 jewels, silver brushed dial, pavé-set diamond outer ring, applied Arabic numerals, sweep centre seconds, aperture for day, magnified window for date, tonneau-shaped water-resistant-type case, diamond-set bezel, screw down crown, screw back, platinum *Rolex President* bracelet and concealed deployant clasp, *case, dial and movement signed* 36 mm. diam.; overall length approximately 190 mm.

US\$35,000-55,000

AED 130,000-200,000

BUCHERER

PERPETUAL CALENDAR



~•173

BUCHERER. AN 18K PINK GOLD AUTOMATIC PERPETUAL CALENDAR WRISTWATCH WITH MOON PHASES

SIGNED BUCHERER, ARCHIMEDES PERPETUAL CALENDAR MODEL, NO. 59, REF. 2892-004, CIRCA 2000

Automatic movement, 21 jewels, silvered dial, gold baton numerals, outer railway minute divisions, four subsidiary dials for date, day, month with leap year indication and moon phases, circular case, glazed display snap on back, 18k pink gold *Bucherer* buckle, *case, dial and movement signed*
35 mm diam.

US\$6,000-8,000

AED22,000-29,000

VACHERON CONSTANTIN

CHRONOGRAPH



~174

VACHERON CONSTANTIN. A FINE 18K GOLD CHRONOGRAPH WRISTWATCH

SIGNED VACHERON & CONSTANTIN, GENEVE, REF. 4072, MOVEMENT NO. 446'340, CASE NO. 295'800, MANUFACTURED IN 1947

Mechanical jewelled movement, silvered dial, applied Arabic and dot numerals, two engine turned subsidiary dials for constant seconds and 30 minute register, outer calibrated tachometer scale, circular case, two rectangular chronograph buttons in the band, snap on back, 18k gold *Vacheron Constantin* buckle, case, dial and movement signed 33 mm. diam.

US\$8,000-12,000

AED30,000-44,000

With *Vacheron Constantin* Extract from Archives confirming production of the watch in 1947 and fitted pouch.

AUDEMARS PIGUET

STAR WHEEL

~175

AUDEMARS PIGUET. A VERY FINE 18K GOLD AUTOMATIC WANDERING HOUR WRISTWATCH

SIGNED AUDEMARS PIGUET, STAR WHEEL MODEL, CASE NO. D8090, CIRCA 1995

Cal. 2124 automatic movement, 33 jewels, engraved gold dial, arched sector for minutes with Arabic numerals, central wheel with three-arms carrying three rotating sapphire disc for hour and minute indication, circular case, glazed display snap on back, 18k gold *Audemars Piguet* buckle, case, dial and movement signed 36 mm. diam.

US\$6,000-10,000

AED22,000-36,000



•*176

AUDEMARS PIGUET, A FINE AND ELEGANT PAIR OF 18K GOLD OVAL CUFFLINKS

SIGNED AUDEMARS PIGUET, MILLENNARY MODEL, REF. L3658, CIRCA 2010

Each cufflink with round gold centre, oval-shaped, signed *Audemars Piguet* 25 mm. width

US\$2,000-3,000

AED7,300-11,000

With *Audemars Piguet Joaillerie* Certificate of Origin, sales tag, fitted presentation box and outer packaging.

AUDEMARS PIGUET

PERPETUAL CALENDAR MÉTROPOLIS

~177

AUDEMARS PIGUET. A VERY FINE 18K PINK GOLD AUTOMATIC PERPETUAL CALENDAR WORLD TIME WRISTWATCH WITH LEAP YEAR INDICATION

AUDEMARS PIGUET, JULES AUDEMARS, QUANTIÈME PERPÉTUEL MÉTROPOLIS MODEL, CASE NO. E58361, CIRCA 2002

Cal. 2120/4 automatic movement, 40 jewels, off-white engine turned dial depicting the earth and latitudes, applied dot and asymmetric Arabic numerals, four subsidiary dials for month combined with leap year indication, day, date and names of 24 world cities combined with white and blue diurnal and nocturnal 24 hour indication, circular case, glazed display back secured by five screws, button for setting the world time function in the band, *Audemars Piguet* deployant clasp, *case, dial and movement signed* 39 mm. diam.

US\$18,000-25,000

AED66,000-91,000



PATEK PHILIPPE

REF. 5035J



~*178

PATEK PHILIPPE. A FINE 18K GOLD AUTOMATIC ANNUAL CALENDAR WRISTWATCH WITH SWEEP CENTRE SECONDS, ORIGINAL CERTIFICATE AND BOX

SIGNED PATEK PHILIPPE, GENEVE, REF. 5035J-001, MOVEMENT NO. 3135888/4235985, CIRCA 1990

Cal. 315 S QA automatic movement stamped with the Geneva seal, 35 jewels, white dial, applied Roman numerals, sweep centre seconds, outer railway minute divisions, three subsidiary dials for month, day and 24 hour indication, window for date, circular case, glazed display screw back, *case dial and movement signed*
37 mm. diam.

US\$15,000–25,000

AED55,000–91,000

With *Patek Philippe* Certificate of Origin confirming the sale of the present watch in 2004, Invoice, setting pin, pouch, fitted winding box, presentation box and outer packaging.

PATEK PHILIPPE

REF. 3940J



~*179

PATEK PHILIPPE. AN VERY FINE 18K GOLD AUTOMATIC PERPETUAL CALENDAR WRISTWATCH WITH MOON PHASES

SIGNED PATEK PHILIPPE, GENEVE, REF. 3940J, MOVEMENT NO. 771'004, CIRCA 1990

Cal. 240 Q, automatic movement, 27 jewels, champagne dial, applied gold baton indexes, three subsidiary dials for day combined with 24 hour indication, month combined with leap year indication and date combine with moon phases, circular case, snap on back, 18k gold Patek Philippe buckle, case, dial and movement signed 36 mm. diam.

US\$22,000-32,000

AED80,000-120,000

PATEK PHILIPPE

REF. 5104P

Reference 5104 is certainly one of the most exclusive collector's watches a connoisseur can dream of. Examples of such high quality, complexity, rarity and unique looks, are considered rare gems in today's market.

Consigned by a private distinguished collector, the present watch is one of less than 6 examples to have come up for auction to date, underlining once again its true exclusivity.

With one of the clearest and loudest chimes amongst *Patek Philippe's* minute repeaters, the present reference 5104 is furthermore in outstanding condition





PATEK PHILIPPE

REF. 5104P



THE PROPERTY OF AN IMPORTANT PRIVATE COLLECTOR

~*180

PATEK PHILIPPE. AN EXCEPTIONAL AND VERY RARE PLATINUM AND 18K PINK GOLD AUTOMATIC SEMI-SKELETONISED MINUTE REPEATING PERPETUAL CALENDAR WRISTWATCH WITH RETROGRADE DATE, DAY, MONTH, MOON PHASES AND LEAP YEAR INDICATION WITH ORIGINAL CERTIFICATE AND BOX

SIGNED PATEK PHILIPPE, REF. 5104P, MOVEMENT NO. 3'670'061, CASE NO. 4'482'801, CIRCA 2009

Cal. R27 PS QR LU automatic movement stamped with the Geneva seal, 41 jewels, repeating on two polished steel hammers onto two gongs, semi-skeletonised dial, outer blue chapter ring for date display with retrograde hand, four subsidiary dials for day, month, leap year indication and constant seconds combined with moon phases, large circular case with engravings and downturned lugs, glazed snap back, repeating slide in the band, platinum *Patek Philippe Henri Stern* buckle, *case, dial and movement signed*
43 mm. diam.

US\$450,000–650,000

AED1,700,000–2,400,000

With *Patek Philippe* Certificate of Origin dated 9 November 2009, setting pin, product literature, leather wallet, slip case, winding box, fitted presentation box and outer packaging.

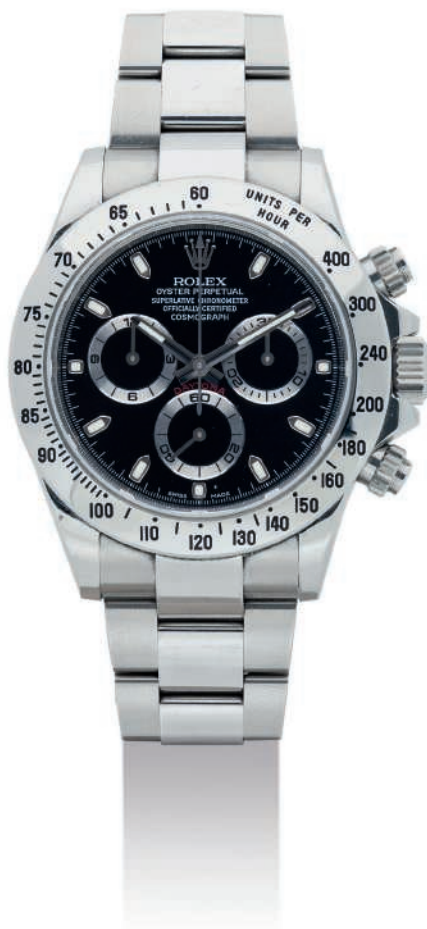


PATEK PHILIPPE



ROLEX

DAYTONA REFERENCE 116520



Φ*181

ROLEX. A FINE STAINLESS STEEL AUTOMATIC CHRONOGRAPH WRISTWATCH

SIGNED ROLEX, OYSTER PERPETUAL, COSMOGRAPH DAYTONA MODEL, REF. 116520, CASE NO. L0Q72827, CIRCA 2013

Cal. 4130 automatic movement, 44 jewels, black dial, applied luminous baton numerals, three subsidiary dials for constant seconds, 30 minute and 12 hour registers, tonneau-shaped water-resistant-type case, bezel calibrated for 400 units, screw down crown, two screw down chronograph buttons in the band, screw back, stainless steel *Rolex Oyster* bracelet and deployant clasp, *case, dial and movement signed* 39 mm. diam.; overall length approximately 180 mm.

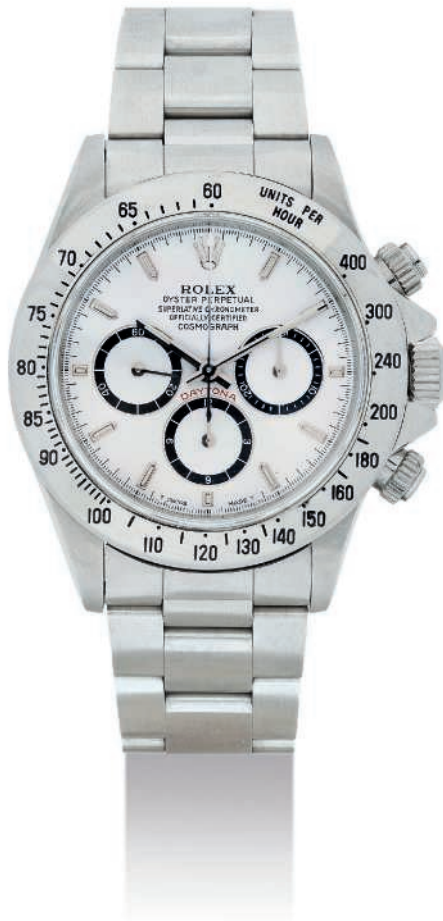
US\$7,000–10,000

AED26,000–36,000

With *Rolex Garantie Internationale* signed 17 February 2014, instruction manual, card holder, fitted presentation box and outer packaging.

ROLEX

COSMOGRAPH DAYTONA



Φ182

ROLEX. A FINE STAINLESS STEEL AUTOMATIC CHRONOGRAPH WRISTWATCH WITH BRACELET

SIGNED ROLEX, OYSTER PERPETUAL, COSMOGRAPH DAYTONA MODEL, REF. 16520, CASE NO. E955487, CIRCA 1990

Cal. 4030 automatic movement, 31 jewels, white dial, applied baton numerals, three subsidiary dials for constant seconds, 12 hour and 30 minute registers with black chapter rings, tonneau-shaped water-resistant-type case, bezel calibrated for 400 units, two screw down chronograph buttons in the band, screw down crown, screw back, stainless steel *Rolex Oyster* bracelet and deployant clasp, *case, dial and movement signed* 39 mm. diam.; overall length approximately 180 mm.

US\$8,000–10,000

AED30,000–36,000

With *Rolex* product literature and fitted pouch.

ROLEX

DAYTONA BEACH

The Cosmograph Daytona, introduced in 1963, was initially engineered to meet the demands for reliability and precision of racing drivers. A special edition, nicknamed beach, was created in 2002 as an allusion to the legendary Daytona Beach speed races.

Made of turquoise, green as well as yellow and pink mother-of-pearl, this edition demonstrated Rolex's ability to display signs of eccentricity, while staying true to its origins.

Established as a genuine icon in the watchmaking universe, this legendary chronograph remains a mirror of 20th century design through the simplicity and timelessness of its lines, while continuing to be an unparalleled source of fascination for connoisseurs of fine horology.



ROLEX

DAYTONA BEACH



~Φ*183

ROLEX. A FINE 18K WHITE GOLD AUTOMATIC CHRONOGRAPH WRISTWATCH WITH GREEN DIAL

SIGNED ROLEX, OYSTER PERPETUAL, COSMOGRAPH DAYTONA BEACH MODEL, REF. 116519, CASE NO. P455174 CIRCA 2000

Cal. 4130 automatic movement, 44 jewels, green dial, applied Roman numerals, three subsidiary dials for seconds, 30 minute and 12 hour registers, tonneau-shaped water-resistant-type case, bezel calibrated for 400 units, two screw down chronograph buttons in the band, screw down crown, screw back, 18k white gold *Rolex* deployant clasp, *case, dial and movement signed* 39 mm. diam.

US\$ 10,000–15,000

AED 37,000–55,000



~Φ*184

ROLEX. A FINE 18K WHITE GOLD AUTOMATIC CHRONOGRAPH WRISTWATCH WITH TURQUOISE DIAL

SIGNED ROLEX, OYSTER PERPETUAL, COSMOGRAPH DAYTONA BEACH MODEL, REF. 116519, CASE NO. P490868, CIRCA 2000

Cal. 4130 automatic movement, 44 jewels, turquoise dial, applied Roman numerals, three subsidiary dials for seconds, 30 minutes and 12 hour registers, tonneau-shaped water-resistant-type case, bezel calibrated for 400 units, two screw down chronograph buttons in the band, screw down crown, screw back, 18k white gold *Rolex* deployant clasp, *case, dial and movement signed* 39 mm. diam.

US\$ 10,000–15,000

AED 37,000–55,000

bonne r
La prése
nt d'une
non fa

que si
ont le
plété p
rantie es
Officiels

mètre a e

tre offic

nent de cette OYS
utives, selon cinq pos
sion effectués par le Co
nt a ainsi acquis le droi
olé.
tion Finale dans les Laborato
ster Perpetual à Sceau Rouge, L
y Certified" figurant sur le cadre
nomètre.



ROLEX

ROLEX
GENÈVE

ROLEX

DAYTONA BEACH



~Φ185

**ROLEX. A FINE 18K WHITE GOLD AUTOMATIC CHRONOGRAPH WRISTWATCH WITH
YELLOW MOTHER-OF-PEARL DIAL**

SIGNED ROLEX, OYSTER PERPETUAL, COSMOGRAPH DAYTONA BEACH MODEL, REF. 116519,
CASE NO. Y326243, CIRCA 2002

Cal. 4130 automatic movement, 44 jewels, yellow mother-of-pearl dial, applied Roman numerals, three subsidiary dials for constant seconds, 30 minute and 12 hour register, tonneau-shaped water-resistant type case, bezel calibrated for 400 units, two screw down chronograph buttons in the band, screw down crown, screw back, 18k white gold *Rolex* deployant clasp, *case, dial and movement signed*
39 mm. diam.

US\$12,000-20,000

AED44,000-73,000

With *Rolex* Attestation de Chronomètre Officiel and fitted lizard card holder.

INDEX

A

A. Lange & Söhne, 119
Andersen, 60
Audemars Piguet, 77, 139-154, 175-177

B

Baume & Mercier, 115
Blancpain, 57, 58, 75
Bovet, 19
Breguet, 120-125
Breitling, 14, 15
Bucherer, 173
Bulgari, 126-128

C

Cartier, 20-22, 26, 35, 76, 81, 82, 86, 91, 92, 97, 129, 131, 132
Cédric Johner, 103, 104
Chaumet, 133, 134
Chopard, 1, 9, 10, 24, 55, 130, 136, 137, 162, 163, 164
Concord, 62
Corum, 49, 50, 59, 63, 64, 74, 78, 79, 161

D

Daniel Roth, 71-73
David Morris, 95
De Grisogono, 108

F

Franck Muller, 87, 88, 96

G

Gerald Genta, 25, 65, 67, 68-70, 106
Girard-Perregaux, 8, 83, 84
Glashütte Original, 105
Graff, 99, 100
Graham, 6
Guy Ellia, 61

H

Harry Winston, 101, 102
Hermès, 93
Heuer, 4
Hublot, 155-157

I

IWC, 118

J

Jaeger-Lecoultré, 89, 90
Jaquet Droz, 56

M

Montblanc, 116, 117

O

Omega, 4, 11-13

P

Parmigiani Fleurier, 107
Patek Philippe, 52, 110-114, 178, 179, 180
Piaget, 2, 40-42, 160
Pierre kunz, 80

R

Roger Dubuis, 94, 158, 159
Rolex, 27-34, 36-39, 43-46, 165-172, 181-185

T

Tag Heuer, 5
The Royal Diamond, 98
Tiffany & Co., 51

U

Ulysse Nardin, 3, 7, 17, 18
Universal Genève, 85

V

Vacheron Constantin, 47, 48, 109, 174
Van Cleef & Arpels, 135, 138
Vulcain, 53

Z

Zenith, 16
Zodiac, 54



IMPORTANT NOTICES AND EXPLANATION OF CATALOGUING PRACTICE

IMPORTANT NOTICES

CHRISTIE'S INTEREST IN PROPERTY CONSIGNED FOR AUCTION

From time to time, Christie's may offer a lot which it owns in whole or in part. Such property is identified in the catalogue with the symbol Δ next to its lot number.

On occasion, Christie's has a direct financial interest in lots consigned for sale, which may include guaranteeing a minimum price or making an advance to the consignor that is secured solely by consigned property. Such property is identified in the catalogue with the symbol \circ next to the lot number. This symbol will be used both in cases where Christie's holds the financial interest on its own, and in cases where Christie's has financed all or part of such interest through third parties. When a third party agrees to finance all or part of Christie's interest in a lot, it takes on all or part of the risk of the lot not being sold, and will be remunerated in exchange for accepting this risk. The third party may also bid for the lot. Where it does so, and is the successful bidder, the remuneration may be netted against the final purchase price. If the lot is not sold, the third party may incur a loss. Where Christie's has an ownership or financial interest in every lot in the catalogue, Christie's will not designate each lot with a symbol, but will state its interest at the front of the catalogue.

In this catalogue, if property has $\circ \blacklozenge$ next to the lot number, Christie's guarantee of a minimum price has been fully financed through third parties.

ALL DIMENSIONS AND WEIGHTS ARE APPROXIMATE ONLY

CONDITION REPORTS

Christie's catalogues include references to condition only in descriptions of multiple works (such as prints, books and wine). For all other property, only alterations or replacement components are listed. Please contact the Specialist Department for a condition report on a particular lot.

Condition reports are provided as a service to interested clients. Prospective buyers should note that descriptions of property are not warranties and that each lot is sold "as is".

LOTS OFFERED WITHOUT RESERVE

Please note that all lots highlighted with **red titles** in this sale are offered 'Without Reserve'. These items will be sold to the highest bidder, regardless of the pre-sale estimate printed in the catalogue. We hope that you will find this visual presentation helpful.

REGARDING THE EXPORT OF WATCH BANDS INCORPORATING MATERIALS FROM ENDANGERED SPECIES

Many of the watches offered for sale in this catalogue are pictured with straps made of endangered or protected animal materials such as alligator or crocodile. These lots are marked with the symbol \sim in the catalogue. These endangered species straps are shown for display purposes only and are not for sale. Christie's will remove and retain the strap prior to shipment from the sale site. At some sale sites, Christie's may at its discretion make the displayed endangered species strap available to the buyer of the lot free of charge if collected in person from the sale site within 1 year of the date of the sale. Please check with the department for details on a particular lot.

For all symbols and other markings, please note that lots are marked as a convenience to you, but we do not accept liability for errors or for failing to mark lots.

PROPERTY INCORPORATING MATERIALS FROM ENDANGERED AND OTHER PROTECTED SPECIES

Property made of or incorporating (irrespective of percentage) endangered and other protected species of wildlife are marked with the symbol \sim in the catalogue. Such material includes, among other things, ivory, tortoiseshell, crocodile skin, rhinoceros horn, whale bone and certain species of coral, together with Brazilian rosewood. Prospective purchasers are advised that several countries prohibit altogether the importation of property containing such materials, and that other countries require a permit (e.g., a CITES permit) from the relevant regulatory agencies in the countries of exportation as well as importation. Accordingly, clients should familiarise themselves with the relevant customs laws and regulations prior to bidding on any property with wildlife material if they intend to import the property into another country. Please note that it is the client's responsibility to determine and satisfy the requirements of any applicable laws or regulations applying to the export or import of property containing endangered and other protected wildlife material. The inability of a client to export or import property containing endangered and other protected wildlife material is not a basis for cancellation or rescission of the sale. Please note also that lots containing potentially regulated wildlife material are marked as a convenience to our clients, but Christie's does not accept liability for errors or for failing to mark lots containing protected or regulated species.

RECENT CHANGES TO IMPORTS OF ELEPHANT IVORY AND OTHER WILDLIFE MATERIAL INTO THE USA

The USA has recently changed its policy on the import of property made of or containing elephant ivory. Only Asian Elephant ivory may be imported into the USA, and imports must be accompanied by DNA analysis and confirmation the object is more than 100 years old. We have not obtained a DNA analysis on any lot prior to sale and cannot indicate whether the elephant ivory in a particular lot is African or Asian elephant. Buyers purchase these lots at their own risk and will be responsible for the costs of obtaining any DNA analysis or other report required in connection with their proposed import of such property into the USA.

The USA is also currently requiring all imports of property made of or containing wildlife material to be accompanied by a scientific confirmation of species and in some cases an additional confirmation of age. We have not obtained such confirmations prior to sale (unless specifically indicated) and buyers will be responsible for the costs of any such additional confirmations or opinions required for their proposed import into the USA.

A buyer's inability to export or import any lot containing elephant ivory or other wildlife material is not a basis for cancelling the purchase.

REGARDING IMPORTATION OF WATCHES INTO THE US

Prospective buyers should be aware that the importation of Rolex watches into the United States is highly restricted. These watches (not limited to Rolex) may not be shipped into the USA and can only be imported personally. Generally, a buyer may import only one watch into the USA. In this catalogue, these watches have been marked with a Φ . It is the buyer's responsibility to determine whether there are any import restrictions and to comply with such restrictions. The failure by Christie's to mark a lot with a Φ shall not constitute grounds to rescind or cancel a sale. For further information please contact our specialists in charge of the sale.

TO PROSPECTIVE BUYERS OF CLOCKS AND WATCHES

The description of the condition of clocks and watches in this catalogue, including references to defects and repairs, is provided as a service to prospective buyers, but such description is not necessarily complete. While Christie's will furnish a condition report on any lot to a prospective purchaser upon request, any such report may also be incomplete and may not specify all mechanical replacements or defects. Accordingly, all clocks and watches should be viewed personally by prospective buyers to evaluate the condition of the property offered for sale. All lots are sold "as is," and the absence of any reference to the condition of a clock or watch does not imply that the lot is in good condition and without defects, repairs or restorations. Virtually all clocks and watches have been repaired in the course of their normal useful lifetime and may now incorporate parts not original to them. Furthermore, Christie's makes no representation or warranty that any clock or watch is in working order.

Watches are not always illustrated life size, buyers should refer to the catalogue description for the dimensions of each watch.

It should be noted that most wristwatches with water-resistant cases have been opened to identify type and quality of movement. It cannot be assumed that the watches are still waterproof and purchasers are advised to have the watches checked by a competent watch-maker before use.

Please note that gold of less than 18ct. does not qualify in all countries as 'gold' and may be refused import. Christie's cannot accept liability if import is refused.

Please note that all Rolex watches in the Christie's sale catalogue are sold as viewed and that Christie's cannot guarantee the authenticity of any individual component part of these Rolex watches. The bracelets described as "associated" are not part of the original piece and may not be authentic.

Prospective buyers should satisfy themselves by personal inspection as to the condition of each Lot. Condition reports can be requested from Christie's and are given 'without prejudice' in accordance with the terms of the conditions of sale and limited warranty printed in the back of the catalogue. Nevertheless, such reports are for general guidance only and will not specify all mechanical replacements or imperfections. Such reports will, of necessity, be subjective. Buyers are advised that certificates are not available unless otherwise stated.

As collectors' watches often contain extremely fine and complex mechanisms, buyers should be aware that a general service, change of battery or further repair work, for which the buyer is solely responsible, may be necessary.

BUYING AT CHRISTIE'S

CONDITIONS OF SALE

Christie's Conditions of Sale and Limited Warranty are set out later in this catalogue. Bidders are strongly encouraged to read these as they set out the terms on which property is bought at auction.

ESTIMATES

Estimates are based upon prices recently paid at auction for comparable property, condition, rarity, quality and provenance. Estimates are subject to revision. Buyers should not rely upon estimates as a representation or prediction of actual selling prices. Estimates do not include the buyer's premium. Where "Estimate on Request" appears, please contact the Specialist Department for further information.

RESERVES

The reserve is the confidential minimum price the consignor will accept and will not exceed the low pre-sale estimate. Lots that are not subject to a reserve are highlighted with red titles in this sale.

BUYER'S PREMIUM

Christie's charges a premium to the buyer on the final bid price of each lot sold at the following rates: 25% of the final bid price of each lot up to and including US\$100,000, 20% of the final bid price of each lot above US\$100,000 and up to and including US\$2,000,000 and 12% of the excess of the hammer price above US\$2,000,000. For all lots, taxes are payable on the premium at the applicable rate.

PRE-AUCTION VIEWING

Pre-auction viewings are open to the public free of charge. Christie's specialists are available to give advice and condition reports at viewings or by appointment.

BIDDER REGISTRATION

Prospective buyers who have not previously bid or consigned with Christie's should bring:

- Individuals: government-issued photo identification (such as a driving licence, national identity card, or passport) and, if not shown on the ID document, proof of current address, for example a utility bill or bank statement.
- Corporate clients: certificate of incorporation and documentary proof of directors and beneficial owners.
- For other business structures such as trusts, offshore companies or partnerships, please contact Christie's Credit Department at +971 (0)4 425 5647 for advice on the information you should supply.
- A financial reference in the form of a recent bank statement or a reference from your bank. Christie's can supply a form of wording for the bank reference if necessary.

Persons registering to bid on behalf of someone who has not previously bid or consigned with Christie's should bring identification documents not only for themselves but also for the party on whose behalf they are bidding, together with a signed letter of authorisation from that party.

To allow sufficient time to process the information, new clients are encouraged to register at least 48 hours in advance of a sale.

Prospective buyers should register for a numbered bidding paddle at least 30 minutes before the auction. Clients who have not made a purchase from any Christie's office within the last one year and those wishing to spend more than on previous occasions, will be asked to supply a new bank reference. For assistance with references, please contact Christie's Credit Department at +971 (0)4 319 8115 from 19-23 October 2014 or +971 (0)4 425 5647. We may at our option ask you for a financial reference or a deposit as a condition of allowing you to bid.

REGISTERING TO BID ON SOMEONE ELSE'S BEHALF

Persons bidding on behalf of an existing client should bring a signed letter from the client authorising the bidder to act on the client's behalf. Please note that Christie's does not accept payments from third parties. Christie's can only accept payment from the client, and not from the person bidding on their behalf.

BIDDING

The auctioneer accepts bids from those present in the saleroom, from telephone bidders, or by absentee written bids left with Christie's in advance of the auction. The auctioneer may also execute bids on behalf of the seller up to the amount of the reserve. The auctioneer will not specifically identify bids placed on behalf of the seller. Under no circumstances will the auctioneer place any bid on behalf of the seller at or above the reserve. Bid steps are shown on the Absentee Bid Form at the back of this catalogue.

ABSENTEE BIDS

Christie's staff will attempt to execute an absentee bid at the lowest possible price taking into account the reserve price. Absentee bids submitted on "no reserve" lots will, in the absence of a higher bid, be executed at approximately 50% of the low pre sale estimate or at the amount of the bid if it is less than 50% of the low pre-sale estimate. The auctioneer may execute absentee bids directly from the rostrum, clearly identifying these as "absentee bids," "book bids," "order bids" or "commission bids." Absentee Bids Forms are available in this catalogue, at any Christie's location or online at christies.com.

TELEPHONE BIDS

Telephone bids will be accepted for lots with low-end estimates of US\$1,500 and above, where arrangements are made no later than 24 hours prior to the sale and only if the capacity of our pool of staff telephone bidders allows. Arrangements to bid in languages other than English must be made well in advance of the sale date. Telephone bids may be recorded. By bidding on the telephone, prospective purchasers consent to the recording of their conversations.

Christie's offers all absentee and telephone bidding services as a convenience to our clients, but will not be responsible for errors or failures to execute bids.

SUCCESSFUL BIDS

While invoices are sent out by mail after the auction, we do not accept responsibility for notifying you of the result of your bids. Buyers are requested to contact us by telephone or in person as soon as possible after the sale to obtain details of the outcome of their bids to avoid incurring unnecessary storage charges. Successful bidders will pay the price of the final bid plus premium plus any applicable taxes.

PAYMENT

Buyers are expected to make payment for purchases immediately after the auction. To avoid delivery delays, prospective buyers are encouraged to supply bank or other suitable references before the auction.

Please note that Christie's will not accept payments for purchased Lots from any party other than the registered buyer.

Lots purchased in Dubai may be paid for in the following ways: wire transfer, credit card: Visa and MasterCard & American Express only (up to \$50,000), cash (in US currency up to \$7,500 (subject to conditions)), money orders (in US currency up to \$7,500 per annum), banker's draft (subject to conditions) and cheque.

For wire transfers (USD and AED) please follow the payment instructions set out in your invoice. Credit Card: Visa and MasterCard & American Express only. A limit of \$50,000 for credit card payments will apply. This limit is inclusive of the buyer's premium and any applicable taxes. Credit card payments at Dubai sale sites will only be accepted for Dubai sales. Christie's will not accept credit card payments for purchases made in any other sale site. The fax number to send completed CNP (Card Member not Present) authorisation forms to is +971 4 425 5639. The number to call to make a CNP payment over the phone is +971 4 425 5647. Alternatively, clients can mail the authorisation form to the address below.

Cash is limited to \$7,500 paid to cashiers at Christie's premises (and subject to conditions). Bankers Draft should be made payable to Christie's (Dubai) Ltd (subject to conditions).

Cheques should be made payable to Christie's (Dubai) Ltd (subject to conditions).

In order to process your payment efficiently, please quote sale number, invoice number and client number with all transactions.

All mailed payments should be sent to: Christie's Dubai, DIFC, Gate Village 5, Podium Level, PO BOX 506685 – Dubai, United Arab Emirates. Tel: +971 4 425 5647 Fax: +971 4 425 5639 Christie's reserve the right to amend these payment terms at any time at its discretion.

IMPORT DUTY

BUYERS RESIDENT IN GCC

★

Buyers of imported objects collected or shipped within the GCC (Bahrain, Kuwait, Oman, Qatar, Saudi Arabia, UAE) are subject to a 5% import duty on the low estimate (identified by the symbol ★ in the catalogue). For GCC buyers, please note that duty is paid at origin (In Dubai) and not in the importing country. As such, duty paid in Dubai is treated as final duty payment as per GCC's custom laws. It is the buyers' responsibility to ascertain and pay all taxes due. For more information, please contact Buyer Payments at +971 (0)4 425 5647.

NON-GCC RESIDENT BUYERS

For non-GCC buyers, import duty will not apply provided that shipment/delivery is arranged through Christie's shipper. Christie's cannot guarantee that import duty will not be levied should clients choose to arrange delivery through their own carriers. UAE SOURCED OBJECTS (GATE PASS LOTS) All objects offered for sale and identified without the symbol ★ in the catalogue are duty exempt if bought by and shipped to UAE residents.

In any case, property sold at auction may be subject to import restrictions/taxes of foreign countries. It is the buyers' responsibility to obtain any relevant import licenses into the buyers' own countries of residence and settle any taxes.

COLLECTION OF PURCHASED LOTS

Purchased lots may only be collected from Christie's Dubai, Gate Village 5, Podium Level, Dubai International Financial Centre, PO Box 506685, Dubai, UAE. Contact: Shanti Veigas

Tel: +971 (0)4 425 5647

Mobile: +971 (0)50 553 9243

Fax: +971 (0)4 425 5639

Email: sveigas@christies.com

Collection and deliveries will commence by appointment as of Thursday 23 October 2014. Office Hours: 9.00 am to 5.00 pm.

SHIPPING

It is the buyer's responsibility to pick up purchases or make all shipping arrangements. After payment has been made in full, G4Si can arrange property packing and shipping at the buyer's request and expense. For more information please contact Shanti Veigas.

Tel: +971 (0)4 425 5647

Mobile: +971 (0)50 553 9243

Fax: +971 (0)4 425 5639

Email: sveigas@christies.com

Christie's Dubai, Gate Village 5, Podium Level, Dubai International Financial Centre, PO Box 506685, Dubai, UAE.

IMPORT PERMITS

Property sold at auction may be subject to import restrictions of foreign countries. It is the buyer's sole responsibility to obtain any relevant import license. The denial of any license or any delay in obtaining licenses shall neither justify the rescission of any sale nor any delay in making full payment for the lot. Upon request, Christie's will assist the buyer in submitting applications to obtain the appropriate licenses. However, Christie's cannot ensure that a license will be obtained. Local laws may prohibit the import of some property and/or may prohibit the resale of some property in the country of importation. No such restriction shall justify the rescission of any sale or delay in making full payment for the lot.

STORAGE & COLLECTION

STORAGE AND COLLECTION

Gatepass lots can be collected from our DIFC Christie's office, Gate Village 5, Podium Level, Dubai International Financial Centre, PO Box 506685, Dubai, UAE on Thursday 23 October 2014.

Import Watches (*) can be collected on Sunday 22 March 2015, but only upon submitting their passport copy on the previous day.

Tel: +971 (0) 4 425 5647
Contact: Shanti Veigas

Office Hours: 9.00 am – 5.00 pm.
Christie's, Gate Village 5, Podium Level, Dubai International Financial Centre, PO Box 506685, Dubai, UAE.

Lots will not be released until all outstanding charges due to Christie's are settled.

Method	Where	Watches per Consignment Duty/Charges Due	Payment
On-site Pick-Up (by appointment only)	At Jumeirah Emirates Towers	For Imported watches (* in the catalogue): 5% Duty plus US\$175 for customs clearance and handling charges. For non-starred Watches: US\$50 handling charges.	Must be Pre-Paid at Christie's
Domestic Deliveries	Within Dubai	For starred watches (* in the catalogue): 5% Duty plus US\$175 for customs clearance and handling charges plus Loss/Damage Liability charges 0.008% of the value plus US\$100 per delivery. For non-starred Watches: Loss/Damage Liability charges 0.008% of the value plus US\$100 per delivery.	Must be Pre-Paid at Christie's
	Within UAE	For starred watches (* in the catalogue): 5% Duty plus US\$175 for customs clearance plus Loss/Damage Liability charges 0.008% of the value plus US\$850 per delivery.	Must be Pre-Paid at Christie's

Export Shipments	Base Rate	Weight Included	Valuation Charges	Service Type
Hong Kong	US\$400.00	4 kg included excess US\$20 / kg	0.02% of the value	Door to Door
New York	US\$500.00	4 kg included excess US\$28 / kg	0.02% of the value	Door to Door
Los Angeles	US\$500.00	4 kg included excess US\$28 / kg	0.02% of the value	Door to Door
Geneva	US\$500.00	4 kg included excess US\$20 / kg	0.02% of the value	Door to Door
London	US\$500.00	4 kg included excess US\$20 / kg	0.02% of the value	Door to Door

Remarks	All destination charges including duties and taxes payable by consignee at the destination. All export shipments will be delivered to business addresses only and the quoted charges are for delivery within city limits at destination. Weight will be calculated as per IATA regulations (Gross or Volumetric weight).
----------------	--

Important Information

- All sold lots are stored at Dubai Airport Free Zone (DAFZ) and delivery or pick-ups can only be affected by appointment through Christie's shipper, G4Si, office hours as from 9am to 5pm, Saturday through Thursday.
- All lots will be stored free of charge for 35 days from the auction date at the shipper's warehouse at Dubai Airport Free Zone (DAFZ).
- After 35 days from the date of the auction, lots shall be subject to a daily storage charge of US\$4.50 per lot plus an administrative fee of US\$45.00 payable to Christie's.
- As set out in the Conditions of Sale, risk and responsibility for the sold lots (including frames or glass where relevant) passes to the buyer at the expiration of seven calendar days from the date of the sale or on collection by the buyer if earlier. Buyers are reminded that it is their responsibility to arrange adequate insurance for purchased lots.
- Lots sold at auction may be subject to import restrictions/taxes of foreign countries. It is the buyer's sole responsibility to obtain any relevant import license into the buyer's own country of residence and settle any taxes and destination clearance charges due.
- Shipments can only be made once full payment of all shipping charges is received by shipper, payments can be made by Visa and Master card.

CONDITIONS OF SALE

These Conditions of Sale and the Important Notices and Explanation of Cataloguing Practice set out the terms governing the legal relationship of Christie's and the seller with the buyer. You should read them carefully before bidding.

1. CHRISTIE'S AS AGENT

Except as otherwise stated Christie's acts as agent for the seller. The contract for the sale of the property is therefore made between the seller and the buyer.

2. CATALOGUE DESCRIPTIONS AND CONDITION

Lots are sold as described and otherwise in the condition they are in at the time of the sale, on the following basis.

(a) Condition

The nature of the lots sold in our auctions is such that they will rarely be in perfect condition, and are likely, due to their nature and age, to show signs of wear and tear, damage, other imperfections, restoration or repair. Any reference to condition in a catalogue entry will not amount to a full description of condition. Condition reports are usually available on request, and will supplement the catalogue description. In describing lots, our staff assess the condition in a manner appropriate to the estimated value of the item and the nature of the auction in which it is included. Any statement as to the physical nature or condition of a lot, in a catalogue, condition report or otherwise, is given honestly and with appropriate care. However, Christie's staff are not professional restorers or trained conservators and accordingly any such statement will not be exhaustive. We therefore recommend that you always view property personally, and, particularly in the case of any items of significant value, that you instruct your own restorer or other professional adviser to report to you in advance of bidding.

(b) Cataloguing Practice

Our cataloguing practice is explained in the Important Notices and Explanation of Cataloguing Practice, which appear after the catalogue entries.

(c) Attribution etc

Any statements made by Christie's about any lot, whether orally or in writing, concerning attribution to, for example, an artist, school, or country of origin, or history or provenance, or any date or period, are expressions of our opinion or belief. Our opinions and beliefs have been formed honestly and in accordance with the standard of care reasonably to be expected of an auction house of Christie's standing, due regard having been had to the estimated value of the item and the nature of the auction in which it is included. It must be clearly understood, however, that, due to the nature of the auction process, we are unable to carry out exhaustive research of the kind undertaken by professional historians and scholars, and also that, as research develops and scholarship and expertise evolve, opinions on these matters may change. We therefore recommend that, particularly in the case of any item of significant value, you seek advice on such matters from your own professional advisers.

(d) Estimates

Estimates of the selling price should not be relied on as a statement that this is the price at which the item will sell or its value for any other purpose.

(e) Fitness for Purpose

Lots sold are enormously varied in terms of age, category and condition, and may be purchased for a variety of purposes. Unless otherwise specifically agreed, no promise is made that a lot is fit for any particular purpose.

3. AT THE SALE

(a) Refusal of admission

Christie's has the right, at our complete discretion, to refuse admission to the premises or participation in any auction and to reject any bid.

(b) Registration before bidding

Prospective buyers must complete and sign a registration form with his or her name and permanent address, and provide identification before bidding. We may require the production of bank details from which payment will be made or other financial references.

(c) Bidding as principal

When making a bid, a bidder is accepting personal liability to pay the purchase price, including the buyer's premium and any applicable taxes, plus all other applicable charges, unless it has been explicitly agreed in writing with Christie's before the commencement of the sale that the bidder is acting as agent on behalf of an identified third party acceptable to Christie's, and that Christie's will only look to the principal for payment.

(d) Absentee bids

We will use reasonable efforts to carry out written bids delivered to us prior to the sale for the convenience of clients who are not present at the auction in person, by an agent or by telephone. Bids must be placed in the currency of the place of the sale. Please refer to the catalogue for the Absentee Bids Form. If we receive written bids on a particular lot for identical amounts, and at the auction these are the highest bids on the lot, it will be sold to the person whose written bid was received and accepted first. Execution of written bids is a free service undertaken subject to other commitments at the time of the sale and provided that we have exercised reasonable care in the handling of written bids, the volume of goods is such that we cannot accept liability in any individual instance for failing to execute a written bid or for errors and omissions in connection with it arising from circumstances beyond our reasonable control.

(e) Telephone bids

If a prospective buyer makes arrangements with us prior to the commencement of the sale we will use reasonable efforts to contact them to enable them to participate in the bidding by telephone but we do not accept liability for failure to do so or for errors and omissions in connection with telephone bidding arising from circumstances beyond our reasonable control.

(f) Currency converter

At some auctions a currency converter may be operated. Errors may occur in the operation of the currency converter. Where these arise from circumstances beyond our reasonable control we do not accept liability to bidders who follow the currency converter rather than the actual bidding in the saleroom.

(g) Video or digital images

At some auctions there may be a video or digital screen. Errors may occur in its operation and in the quality of the image. We do not accept liability for such errors where they arise for reasons beyond our reasonable control.

(h) Reserves

Unless otherwise indicated, all lots are offered subject to a reserve, which is the confidential minimum price below which the lot will not be sold. The reserve will not exceed the low estimate printed in the catalogue. Lots that are not subject to a reserve are highlighted with red titles in this sale. The auctioneer may open the bidding on any lot below the reserve by placing a bid on behalf of the seller. The auctioneer may continue to bid on behalf of the seller up to the amount of the reserve, either by placing consecutive bids or by placing bids in response to other bidders.

(i) Auctioneer's discretion

The auctioneer has the right to exercise reasonable discretion in refusing any bid, advancing the bidding in such a manner as he may decide, withdrawing or dividing any lot, combining any two or more lots and, in the case of error or dispute, and whether during or after the sale, determining the successful bidder, continuing the bidding, cancelling the sale or reoffering and reselling the item in dispute. If any dispute arises after the sale, then, in the absence of any evidence to the contrary the sale record maintained by the auctioneer will be conclusive.

(j) Successful bid and passing of risk

Subject to the auctioneer's reasonable discretion, the highest bidder accepted by the auctioneer will be the buyer and the striking of his hammer marks the acceptance of the highest bid and the conclusion of a contract for sale between the seller and the buyer. Risk and responsibility for the lot (including frames or glass where relevant) passes to the buyer at the expiration of seven calendar days from the date of the sale or on collection by the buyer if earlier.

4. AFTER THE SALE

(a) Buyer's premium

Christie's charges a premium to the buyer on the final bid price of each lot sold at the following rates: 25% of the final bid price of each lot up to and including US\$100,000, 20% of the final bid price of each lot above US\$100,000 and up to and including US\$2,000,000 and 12% of the excess of the hammer price above US\$2,000,000. For all lots, taxes are payable on the premium at the applicable rate.

(b) Payment and ownership

The buyer must pay the full amount due (comprising the hammer price, buyer's premium and any applicable taxes) immediately after the sale.

The buyer will not acquire title to the lot until all amounts due to us from the buyer have been received by us in good cleared funds even in circumstances where we have released the lot to the buyer.

(c) Collection of purchases

We shall be entitled to retain items sold until all amounts due to us, or to Christie's International plc, or to any of its affiliates, subsidiaries or parent companies worldwide, have been received in full in good cleared funds or until the buyer has performed any other outstanding obligations as we, in our sole discretion, shall require, including, for the avoidance of doubt, competing any anti-money laundering or anti-terrorism financing checks we may require to our satisfaction. In the event a buyer fails to complete any anti-money laundering or anti-terrorism financing checks to our satisfaction, Christie's shall be entitled to cancel the sale and to take any other actions that are required or permitted under applicable law. Subject to this, the buyer shall collect purchased lots within two calendar days from the sale unless otherwise agreed between us and the buyer.

(d) Packing, handling and shipping

Although we shall use reasonable efforts to take care when handling, packing and shipping a purchased lot and in selecting third parties for these purposes, we are not responsible for the acts or omissions of any such third parties. Similarly, where we suggest other handlers, packers or carriers if so requested, we are not responsible to any person to whom we have made a recommendation for the acts or omissions of the third party concerned.

(e) Remedies for non payment

If the buyer fails to make payment in full in good cleared funds within 7 days after the sale, we shall have the right to exercise a number of legal rights and remedies. These include, but are not limited to, the following:

- (i) to hold the defaulting buyer liable for the total amount due and to commence legal proceedings for its recovery together with interest, legal fees and costs to the fullest extent permitted under applicable law;
- (ii) to cancel the sale;
- (iii) to resell the property publicly or privately on such terms as we shall think fit;
- (iv) to pay the seller an amount up to the net proceeds payable in respect of the amount bid by the defaulting buyer;
- (v) to set off against any amounts which we, or Christie's International plc, or any of its affiliates, subsidiaries or parent companies worldwide, may owe the buyer in any other transactions, the outstanding amount remaining unpaid by the buyer;
- (vi) where several amounts are owed by the buyer to us, or to Christie's International plc, or to any of its affiliates, subsidiaries or parent companies worldwide, in respect of different transactions, to apply any amount paid to discharge any amount owed in respect of any particular transaction, whether or not the buyer so directs;
- (vii) to reject at any future auction any bids made by or on behalf of the buyer or to obtain a deposit from the buyer before accepting any bids;
- (viii) to exercise all the rights and remedies of a person holding security over any property in our possession owned by the buyer, whether by way of pledge, security interest or in any other way, to the fullest extent permitted by the law of the place where such property is located. The buyer will be deemed to have granted such security to us and we may retain such property as collateral security for such buyer's obligations to us;
- (ix) to take such other action as we deem necessary or appropriate.

If we resell the property under paragraph (iv) above, the defaulting buyer shall be liable for payment of any deficiency between the total amount originally due to us and the price obtained upon resale as well as for all reasonable costs, expenses, damages, legal fees and commissions and premiums of whatever kind associated with both sales or otherwise arising from the default. If we pay any amount to the seller under paragraph (v) above, the buyer acknowledges that Christie's shall have all of the rights of the seller, however arising, to pursue the buyer for such amount.

(f) Selling Property at Christie's

In addition to expenses such as transport, all consignors pay a commission according to a fixed scale of charges based upon the value of the property sold by the consignor at Christie's in a calendar year. Commissions are charged on a sale by sale basis.

5. LIMITED WARRANTY

In addition to Christie's liability to buyers set out in clause 2 of these Conditions, but subject to the terms and conditions of this paragraph, Christie's warrants for a period of five years from the date of the sale that any property described in headings printed in UPPER CASE TYPE (i.e. headings having all capital-letter type) in this catalogue (as such description may be amended by any saleroom notice or announcement) which is stated without qualification to be the work of a named author or authorship, is authentic and not a forgery. The term "author" or "authorship" refers to the creator of the property or to the period, culture, source or origin, as the case may be, with which the creation of such property is identified in the UPPER CASE description of the property in this catalogue. Only UPPER CASE TYPE headings of lots in this catalogue indicate what is being warranted by Christie's. Christie's warranty does not apply to supplemental material which appears below the UPPER CASE TYPE headings of each lot and Christie's is not responsible for any errors or omissions in such material. The terms used in the headings are further explained in Important Notices and Explanation of Cataloguing Practice. The warranty does not apply to any heading which is stated to represent a qualified opinion. The warranty is subject to the following:

- (i) It does not apply where (a) the catalogue description or saleroom notice corresponded to the generally accepted opinion of scholars or experts at the date of the sale or fairly indicated that there was a conflict of opinions; or (b) correct identification of a lot can be demonstrated only by means of either a scientific process not generally accepted for use until after publication of the catalogue or a process which at the date of publication of the catalogue was unreasonably expensive or impractical or likely to have caused damage to the property.
- (ii) The benefits of the warranty are not assignable and shall apply only to the original buyer of the lot as shown on the invoice originally issued by Christie's when the lot was sold at auction.
- (iii) The original buyer must have remained the owner of the lot without disposing of any interest in it to any third party.
- (iv) The buyer's sole and exclusive remedy against Christie's and the seller, in place of any other remedy which might be available, is the cancellation of the sale and the refund of the original purchase price paid for the lot. Neither Christie's nor the seller will be liable for any special, incidental or consequential damages including, without limitation, loss of profits nor for interest.

- (v) The buyer must give written notice of claim to us within five years from the date of the auction. It is Christie's general policy, and Christie's shall have the right, to require the buyer to obtain the written opinions of two recognised experts in the field, mutually acceptable to Christie's and the buyer, before Christie's decides whether or not to cancel the sale under the warranty.
- (vi) The buyer must return the lot to the Christie's saleroom at which it was purchased in the same condition as at the time of the sale.

6. COPYRIGHT

The copyright in all images, illustrations and written material produced by or for Christie's relating to a lot including the contents of this catalogue, is and shall remain at all times the property of Christie's and shall not be used by the buyer, nor by anyone else, without our prior written consent. Christie's and the seller make no representation or warranty that the buyer of a property will acquire any copyright or other reproduction rights in it.

7. SEVERABILITY

If any part of these Conditions of Sale is found by any court to be invalid, illegal or unenforceable, that part shall be discounted and the rest of the conditions shall continue to be valid to the fullest extent permitted by law.

8. LAW AND JURISDICTION

Any dispute arising out of or in connection with these Conditions of Sale, including any question regarding its existence, validity or termination, shall at Christie's sole option: (i) be subject to the non exclusive jurisdiction of the Courts of the Dubai International Financial Centre ("DIFC") and the Buyer irrevocably submits to the jurisdiction of the DIFC Courts and waives any objection it may have to disputes arising out of or in connection with this contract being heard in the DIFC Courts on the grounds that it is an inconvenient forum (*forum non conveniens*); or, at Christie's sole option (ii) be referred to arbitration under the Arbitration Rules of the DIFC-LCIA Arbitration Centre, which Rules are deemed to be incorporated by reference into this clause. The seat, or legal place, of arbitration shall be the DIFC. The language to be used in the arbitration shall be English. The governing law of the contract shall be the substantive law of England and Wales.

[Please note an Arabic version of the Conditions of Sale is available upon request].

WORLDWIDE SALEROOMS AND OFFICES

ARGENTINA

BUENOS AIRES

+54 11 43 93 42 22
Cristina Carlisle

AUSTRALIA

SYDNEY

+61 (0)2 9326 1422
Ronan Sulich

AUSTRIA

VIENNA

+43 (0)1 533 8812
Angela Baillou

BELGIUM

BRUSSELS

+32 (0)2 512 88 30
Roland de Lathuy

BERMUDA

BERMUDA

+1 401 849 9222
Betsy Ray

BRAZIL

RIO DE JANEIRO

+5521 2225 6553
Candida Sodre

SÃO PAULO

+5511 3061 2576
Nathalie Lenci

CANADA

TORONTO

+1 416 960 2063
Brett Sherlock

CHILE

SANTIAGO

+56 2 2 2631642
Denise Ratinoff
de Lira

COLOMBIA

BOGOTA

+571 635 54 00
Juanita Madrinan

DENMARK

COPENHAGEN

+45 3962 2377
Birgitta Hillingsø
(Consultant)
+45 2612 0092
Rikke Juel Brandt
(Consultant)

FINLAND AND THE BALTIC STATES

HELSINKI

+358 40 5837945
Barbro Schauman
(Consultant)

FRANCE

BRITTANY AND THE LOIRE VALLEY

+33 (0)6 09 44 90 78
Virginie Gregory
(Consultant)

GREATER EASTERN FRANCE

+33 (0)6 07 16 34 25
Jean-Louis Janin
Daviet (Consultant)

NORD-PAS DE CALAIS

+33 (0)6 09 63 21 02
Jean-Louis Brémils
(Consultant)

• PARIS

+33 (0)1 40 76 85 85

POITOU-CHARENTE AQUITAINE

+33 (0)5 56 81 65 47
Marie-Cécile
Moueix

PROVENCE - ALPES CÔTE D'AZUR

+33 (0)6 71 99 97 67
Fabienne Albertini-
Cohen

RHÔNE ALPES

+33 (0)6 61 81 82 53
Dominique Pierron
(Consultant)

GERMANY

DÜSSELDORF

+49 (0)21 14 91 59 30
Arno Verkade

FRANKFURT

+49 (0)173 317 3975
Anja Schaller
(Consultant)

HAMBURG

+49 (0)40 27 94 073
Christiane Gräfin
zu Rantzau

MUNICH

+49 (0)89 24 20 96 80
Marie Christine
Gräfin Huyn

STUTTGART

+49 (0)71 12 26 96 99
Eva Susanne
Schweizer

INDIA

• MUMBAI

+91 (22) 2280 7905
Sonal Singh

DELHI

+91 (98) 1032 2399
Sanjay Sharma

INDONESIA

JAKARTA

+62 (0)21 7278 6268
Charmie Hamami

ISRAEL

TEL AVIV

+972 (0)3 695 0695
Roni Gilat-Baharaff

ITALY

• MILAN

+39 02 303 2831

ROME

+39 06 686 3333
Marina Cicogna
Business Development
Director

JAPAN

TOKYO

+81 (0)3 6267 1766
Chie Banta

MALAYSIA

KUALA LUMPUR

+60 3 6207 9230
Lim Meng Hong

MEXICO

MEXICO CITY

+52 55 5281 5503
Gabriela Lobo

MONACO

+377 97 97 11 00
Nancy Dotta

THE NETHERLANDS

• AMSTERDAM

+31 (0)20 57 55 255

PEOPLES REPUBLIC OF CHINA

BEIJING

+86 (0)10 8572 7900
Jinqing Cai

• HONG KONG

+852 2760 1766

• SHANGHAI

+86 (0)21 6355 1766
Gwenn Delamaire

PORTUGAL

LISBON

+351 919 317 233
Mafalda Pereira
Coutinho
(Independent
Consultant)

• DENOTES SALEROOM

ENQUIRIES?— Call the Saleroom or Office

EMAIL— info@christies.com

26/01/15

RUSSIA**MOSCOW**

+7 495 937 6364
+44 20 7389 2318
Katya Vinokurova

SINGAPORE**SINGAPORE**

+65 6235 3828
Wen Li Tang

SOUTH AFRICA**CAPE TOWN**

+27 (21) 761 2676
Juliet Lomberg
(Independent
Consultant)

**DURBAN &
JOHANNESBURG**

+27 (31) 207 8247
Gillian Scott-Berning
(Independent
Consultant)

WESTERN CAPE

+27 (44) 533 5178
Annabelle
Conyngham
(Independent
Consultant)

SOUTH KOREA**SEOUL**

+82 2 720 5266
Hye-Kyung Bae

SPAIN**BARCELONA**

+34 (0)93 487 8259
Carmen Schjaer

MADRID

+34 (0)91 532 6626
Juan Varez
Dalia Padilla

SWEDEN**STOCKHOLM**

+46 (0)70 5368 166
Marie Boettiger
Kleman (Consultant)
+46 (0)70 9369 201
Louise Dyhlén
(Consultant)

SWITZERLAND**• GENEVA**

+41 (0)22 319 1766
Eveline de Proyart

• ZURICH

+41 (0)44 268 1010
Dr. Bertold Mueller

TAIWAN**TAIPEI**

+886 2 2736 3356
Ada Ong

THAILAND**BANGKOK**

+66 (0)2 652 1097
Yaovane Nirandara
Punchalee Phenjati

TURKEY**ISTANBUL**

+90 (532) 558 7514
Eda Kehale Argün
(Consultant)

**UNITED ARAB
EMIRATES****• DUBAI**

+971 (0)4 425 5647

UNITED KINGDOM**• LONDON,
KING STREET**

+44 (0)20 7839 9060

**• LONDON,
SOUTH KENSINGTON**

+44 (0)20 7930 6074

NORTH

+44 (0)20 7752 3004
Thomas Scott

SOUTH

+44 (0)1730 814 300
Mark Wrey

EAST

+44 (0)20 7752 3004
Thomas Scott

**NORTHWEST
AND WALES**

+44 (0)20 7752 3004
Jane Blood

SCOTLAND

+44 (0)131 225 4756
Bernard Williams
Robert Lagneau
David Bowes-Lyon
(Consultant)

ISLE OF MAN

+44 (0)20 7389 2032

CHANNEL ISLANDS

+44 (0)1534 485 988
Melissa Bonn

IRELAND

+353 (0)59 86 24996
Christine Ryall

UNITED STATES**BOSTON**

+1 617 536 6000
Elizabeth M. Chapin

CHICAGO

+1 312 787 2765
Lisa Cavanaugh

DALLAS

+1 214 599 0735
Capera Ryan

HOUSTON

+1 713 802 0191
Jessica Phifer

LOS ANGELES

+1 310 385 2600

MIAMI

+1 305 445 1487
Jessica Katz

NEWPORT

+1 401 849 9222
Betsy D. Ray

• NEW YORK

+1 212 636 2000

PALM BEACH

+1 561 833 6952
Maura Smith

PHILADELPHIA

+1 610 520 1590
Christie Lezano

SAN FRANCISCO

+1 415 982 0982
Ellanor Notides





MESSAGE FROM ZURICH INSURANCE MIDDLE EAST – SPONSORS OF CHRISTIE'S DUBAI AUCTION

The first Christie's auction of 2015 coincides with Art Week in Dubai and serves as another vivid illustration of just how far the Middle East art scene has progressed over the last decade.

Alongside fine art's integration into the cultural fabric of the region, it has also become an increasingly attractive standalone asset class for investors.

Whether a collector buys a piece for love or for business, they are making a significant investment that requires protection. The best way to protect that investment is to enlist the services of a specialist insurance team that will not only insure your masterpiece but also help to ensure it does not get damaged in the first place.

As part of Zurich's partnership with Christie's, we will be offering all successful UAE-based auction bidders a free Home Risk Assessment Survey where a specialist home appraiser will evaluate your home contents and provide advice on how you can protect and insure your most prized possessions.

At Zurich we have witnessed an increase in the incidents of loss and damage to fine art and valuables in the region from headline grabbing risks, such as fire and theft, through to more mundane yet frequent events ranging from leaky air conditioning units to clumsy delivery men.

Our dedicated Zurich Private Clients team, comprising home appraisers, underwriters and relationship managers, has been incredibly busy helping hundreds of collectors in the Middle East to protect their investments, with many taking out art insurance for the first time.

So if you do purchase a work of art during the Christie's auction then I would recommend that you take up the offer of a free Home Risk Assessment Survey from one of our specialists.

On behalf of the entire Zurich team, we look forward to seeing you at the auction and we wish you every success in your bidding.

Yours faithfully

Brian J. Reilly

CEO, Zurich General Insurance
Middle East

A DISTINCTIVELY DIFFERENT SERVICE FOR A WORLD THAT IS UNIQUELY YOURS

Zurich Private Clients are specialists in insurance for high net worth individuals. We offer a full range of bespoke insurance solutions with the most comprehensive cover in the market and pride ourselves on delivering exemplary service for our clients.

Visit Zurich's stand at the auction and qualify for a **free Home Risk Assessment Survey** by a specialist appraiser.

To request a bespoke consultation with one of our advisers, please contact us on **800 1200** or **privateclients@zurich.com**

ART &
VALUABLES



HOME



MOTOR



TRAVEL



“ Buying art is
the same thing
as falling in love”

Nohra Haime, New York art curator



CAREFULLY CRAFTED POLICIES FOR THE OBJECTS OF YOUR AFFECTION

We understand that as an art lover the value of your collection is more than just its price. That's why as well as insuring every item for 150% of its value to take into account market appreciation, we offer extra services such as assistance with cataloguing, expert valuations at preferential rates as well as **free** home risk assessment surveys.

To request a bespoke consultation, please contact our team of specialists on **800 1200**.

A DISTINCTIVELY DIFFERENT SERVICE
FOR A WORLD THAT IS UNIQUELY YOURS





THE SANCTUARY POINT ESTATE BOCA RATON, FLORIDA

An elegant garden with wall fountain introduces this Italian-inspired estate with ± 194 feet of shoreline. The $\pm 12,626$ sq. ft. residence was renovated top-to-bottom by San Francisco-based Warren Sheets Design. Amid exotic specimen palms and lush gardens, the resort-like outdoor entertainment area is elevated above multi-yacht dockage with room for a ± 100 ft. vessel.

Offered at \$10,695,000

CHRISTIE'S INTERNATIONAL REAL ESTATE
Rick Moeser • +1 561 805 7327
rmoeser@christies.com

www.christiesrealestate.com

PREMIER ESTATE PROPERTIES
Carmen D'Angelo • +1 561 394 7700
Carmen@premierestateproperties.com
www.premierestateproperties.com

CHRISTIE'S
INTERNATIONAL REAL ESTATE

Travel with The Art People

Join Christie's in London for an unforgettable programme of jewellery-focused experiences and exceptional events. Hosted by David Warren, Christie's Senior International Director of Jewellery, the tour explores the history and majesty of the city's greatest collections: from a private view of the Crown Jewels to the famous ateliers of Mayfair, with once-in-a-lifetime access and private dining in London's most exclusive establishments.



London Jewels

1–4 June 2015

Contact

travel@christies.com
+44 (0) 20 7389 2830

Find out more at

christiestravel.com

CHRISTIE'S *travel*

— IN ASSOCIATION WITH —

Abercrombie & Kent

AN ANTIQUE SAPPHIRE AND
DIAMOND TIARA / NECKLACE
circa 1890, fitted S.J. Phillips Ltd. case
Sold at Christie's King Street, 2014

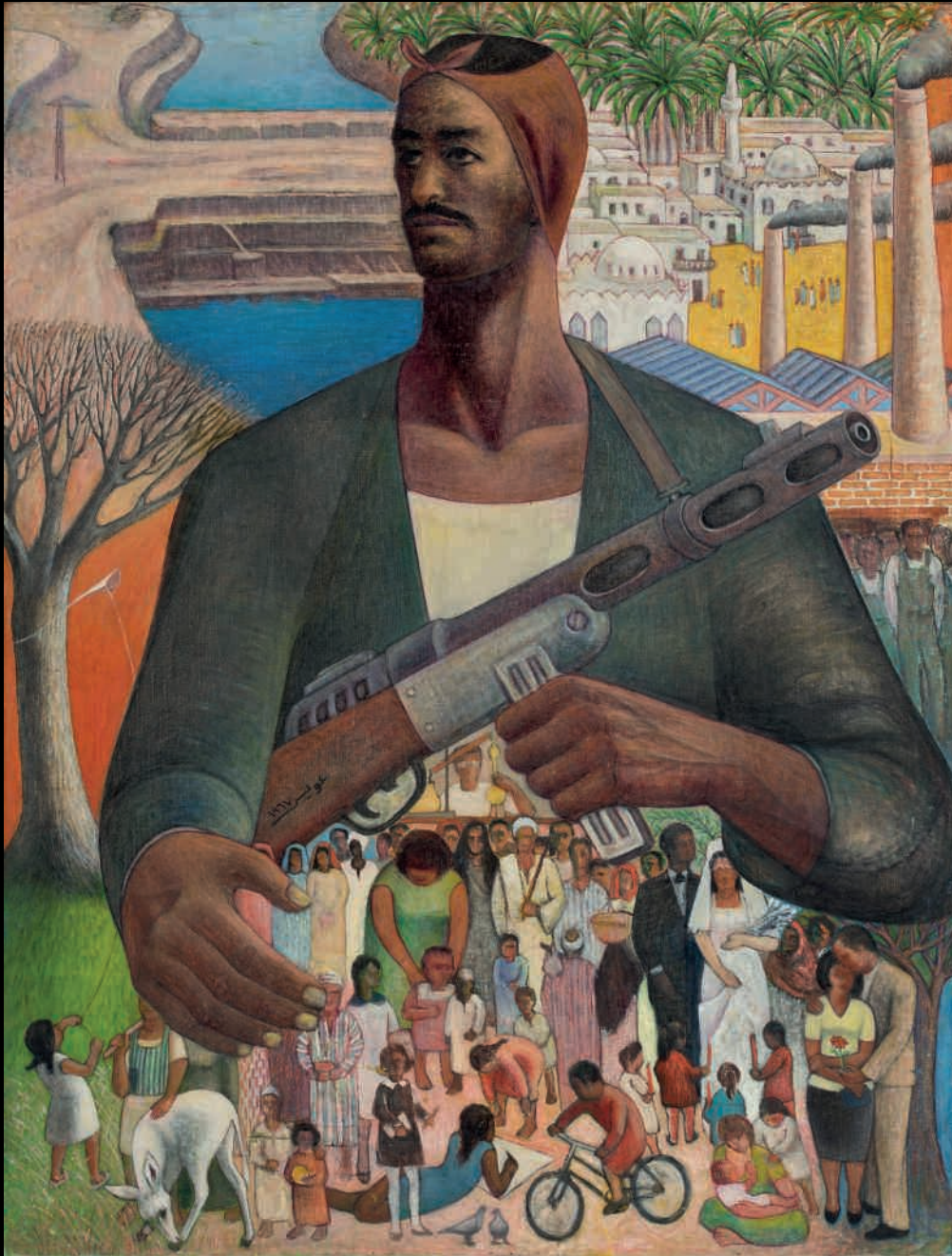
PROPERTY FROM THE COLLECTION OF THE ARTIST'S FAMILY

HAMED EWAIS (EGYPTIAN, 1919-2011)

Homat al Hayat (The Protector of Life)

oil on canvas · 52 x 39½ in. (132 x 100 cm.) · Painted in 1967-1968

\$150,000–200,000



**Modern & Contemporary Arab, Iranian
& Turkish Art**

Dubai • 18 March 2015

CHRISTIE'S

Viewing

15–18 March
Jumeirah Emirates Towers Hotel,
Godolphin Ballroom

Contact

Masa Al-Kutoubi
mal-kutoubi@christies.com
+971 4425 5647

christies.com

ROLEX

A Stainless Steel Reference 1680 'Red' Submariner, Complete Set with Box and Papers



Christie's Watch Shop

Rolex Box & Papers

31 March – 13 April 2015

Build Your Legacy

Browse and buy the world's best vintage and contemporary watches for men and women.

No Additional Commission Fees.
Free Shipping.

CHRISTIE'S

Shop Now

christies.com/watchshop

THE PROPERTY OF AN IMPORTANT EUROPEAN PRIVATE COLLECTOR

PATEK PHILIPPE

An exceptional 18K gold perpetual calendar chronograph wristwatch with moon phase, ref. 2499/100,
sold to Gobbi Milan on 27 October 1980, with original certificate, sales tag, box,
spare date disks, winding crowns, calendar parts and other accessories
CHF400,000–800,000



Important Watches

Geneva • 11 May 2015

Viewing

8–10 May
Four Seasons Hotel des Bergues
33 Quai des Bergues, 1201 Geneva

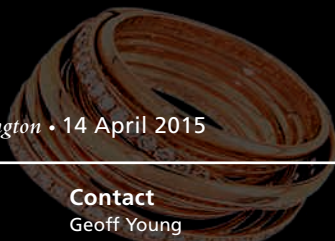
Contact

Sabine Kegel
skegel@christies.com
+41 22 319 17 23

CHRISTIE'S

christies.com

THREE DIAMOND AND GEM-SET 'ALLEGRA' RINGS, BY DE GRISOGONO
£1,400–1,600



Jewellery

London, South Kensington • 14 April 2015

Viewing

10–13 April
85 Old Brompton Road
London SW7 3LD

Contact

Geoff Young
gyoung@christies.com
+44 (0)20 7752 3267

CHRISTIE'S

christies.com

JEWELLERY PRIVATE SALES

A RARE 'MYSTERY-SET' RUBY AND DIAMOND 'PAVOT' BRACELET WATCH, BY VAN CLEEF & ARPELS

Designed as a stylised floral spray, the hinged bracelet and two leaves set throughout with brilliant-cut diamonds to the principal flower head set with calibr -cut rubies to the diamond-set centre opening to reveal a circular watch face with rose gold hands and signature, signed 'Van Cleef & Arpels'



Dubai Auction Week

Dubai • 13–20 March 2015

Viewing

13–20 March
Jumeirah Emirates Towers Hotel
Sheikh Zayed Road, 72127 Dubai

Contact

Michel Omeyer
momeyer@christies.com
+971 564 808 402

CHRISTIE'S

JEWELLERY PRIVATE SALES

We Have Mobile Browsing Down to an Art



CHRISTIE'S

ABSENTEE BIDS FORM

CHRISTIE'S DUBAI

IMPORTANT WATCHES

THURSDAY 19 MARCH 2015 AT 7.00 PM

CODE NAME: REM

SALE NUMBER: 1238

SALE ADDRESS (15-19 MARCH)

Jumeirah Emirates Towers Hotel, Godolphin Ballroom

Invoices cannot be changed after they have been printed.

BID ONLINE FOR THIS SALE AT CHRISTIES.COM

BIDDING INCREMENTS

Bidding generally opens below the low estimate and advances in increments of up to 10%, subject to the auctioneer's discretion. Absentee bids that do not conform to the increments set below may be lowered to the next bidding interval.

\$50 to \$1,000	by \$50s
\$1,000 to \$2,000	by \$100s
\$2,000 to \$3,000	by \$200s
\$3,000 to \$5,000	by \$200, 500, 800
(ie: \$4,200, 4,500, 4,800)	
\$5,000 to \$10,000	by \$500s
\$10,000 to \$20,000	by \$1,000s
\$20,000 to \$30,000	by \$2,000s
\$30,000 to \$50,000	by \$2,000, 5,000, 8,000
(ie: \$32,000, 35,000, 38,000)	
\$50,000 to \$100,000	by \$5,000s
\$100,000 to \$200,000	by \$10,000s
above \$200,000	at auctioneer's discretion

The auctioneer may vary the increments during the course of the auction at his or her own discretion.

I request Christie's to bid on the following lots up to the maximum price I have indicated for each lot. I understand that if my bid is successful, the purchase price will be the sum of my final bid plus a buyer's premium of 25% of the final bid price of each lot up to and including US\$100,000, 20% of the final bid price of each lot above US\$100,000 and up to and including US\$2,000,000 and 12% of the excess of the hammer price above US\$2,000,000, together with any applicable taxes.

I understand that Christie's provides the service of executing absentee bids for the convenience of clients and that Christie's is not responsible for failing to execute bids or for errors relating to execution of bids. On my behalf, Christie's will try to purchase these lots for the lowest possible price, taking into account the reserve and other bids. Absentee bids submitted on "no reserve" lots will, in the absence of a higher bid, be executed at approximately 50% of the low pre-sale estimate or at the amount of the bid if it is less than 50% of the low pre-sale estimate.

If identical absentee bids are received for the same lot, the written bid received first by Christie's will take precedence. Please contact the Bid Department at least 24 hours in advance of the sale to make arrangements for telephone bidding. All bids are subject to the terms of the Conditions of Sale and Limited Warranty printed in each Christie's catalogue.

Absentee bids must be placed in US Dollars and received at least 24 hours before the auction begins.

Christie's will confirm all bids received by fax by return fax. If you have not received confirmation within one business day, please contact the Bid Department.

Tel: +44 (0)20 7389 2658 Fax: +44 (0)20 7930 8870 on-line www.christies.com

From 15-19 March, please contact the Bids Department on

Tel: +971 (0)4 330 3462 Tel: +971 (0)4 330 3463 Fax: +971 (0)4 330 0739

1238

Client Number (if applicable)	Sale Number
Billing Name (please print)	
Address	
Post Code	
Daytime Telephone	Evening Telephone
Fax (Important)	Email
<input type="checkbox"/> Please tick if you prefer not to receive information about our upcoming sales by e-mail	
Signature	

We may at our option ask you for a financial reference or a deposit as a condition of allowing you to bid. If you have not previously bid or consigned with Christie's, please attach copies of the following documents. Individuals: government-issued photo identification (such as a photo driving licence, national identity card, or passport) and, if not shown on the ID document, proof of current address, for example a utility bill or bank statement. Corporate clients: a photocopy of the certificate of incorporation and documentary proof of directors and beneficial owners. Other business structures such as trusts, offshore companies or partnerships: please contact the Credit Department at +971 (0)4 425 5647 and from 19-23 October on +971 (0)4 319 8115 for advice on the information you should supply. If you are registering to bid on behalf of someone who has not previously bid or consigned with Christie's, please attach identification documents for yourself as well as the person/entity on whose behalf you are bidding, together with a signed letter of authorisation from the person/entity. New clients, clients who have not made a purchase from any Christie's office within the last two years, and those wishing to spend more than on previous occasions will be asked to supply a bank reference. We also request that you complete the section below with your bank details:

Name of Bank(s)
Address of Banks(s)
Account Number(s)
Name of Account Officer(s)
Bank Telephone Number

PLEASE PRINT CLEARLY

Lot number (in numerical order)	Maximum Bid US\$ (excluding buyer's premium)	Lot number (in numerical order)	Maximum Bid US\$ (excluding buyer's premium)

CATALOGUE SUBSCRIPTIONS

EXPERT KNOWLEDGE BEAUTIFULLY PRESENTED

WATCHES
The finest pocket watches and wristwatches from leading manufacturers, as well as timepieces and other horological items from the 16th century through to the present day.



Code	Subscription Title	Location	Issues	UK£Price	US\$Price	EURPrice
Watches						
D44	Important Watches	Dubai	2	48	76	72
G44	Important Watches	Geneva	2	70	114	106
H44	Important Watches	Hong Kong	2	70	114	106
N44	Important Watches	New York	2	70	114	106

CHRISTIE'S

WWW.CHRISTIES.COM/SHOP

Photographs, Posters and Prints · Impressionist and Modern Art
Jewellery, Watches and Wine · Antiquities and Tribal Art
Asian and Islamic Art · Russian Art
Furniture, Decorative Arts and Collectables · American Art and Furniture
Books, Travel and Science · Design, Costume and Memorabilia
Post-War and Contemporary Art
Old Master Paintings and 19th Century Paintings

CHRISTIE'S

CHRISTIE'S INTERNATIONAL PLC

Patricia Barbizet, Chairwoman and
Chief Executive Officer
Stephen Brooks, Global Chief Operating Officer
Loïc Brivezac, Gilles Erulin, Gilles Pagniez,
François-Henri Pinault,
Jussi Pylkkänen, Global President
Sophie Carter, Company Secretary

CHRISTIE'S EXECUTIVE

Patricia Barbizet, Chairwoman and
Chief Executive Officer
Jussi Pylkkänen, Global President
Stephen Brooks, Global Chief Operating Officer
François Curiel, Marc Porter

Charles Cator, Deputy Chairman,
Christie's International

CHRISTIE'S EUROPE CHAIRMAN'S OFFICE

Jussi Pylkkänen, Chairman
Orlando Rock, Deputy Chairman

SENIOR DIRECTORS

Mariolina Bassetti, Giovanna Bertazzoni,
Olivier Camu, Philippe Garner, Richard Knight,
Francis Outred, Andreas Rumbler,
François de Ricqlès

DIRECTORS

Prof. Dr. Dirk Boll, Roland de Lathuy,
Eveline de Proyart, Roni Gilat-Baharaff,
Paul Hewitt, Clarice Pecori Giraldi,
Christiane Rantzaou, Jop Ubbens, Juan Varez

CHRISTIE'S EUROPEAN ADVISORY BOARD

Pedro Girao, Chairman,
Christopher Balfour, Patricia Barbizet,
Arpad Busson, Loula Chandris,
Kemal Has Cingillioglu, Ginevra Elkann,
I. D. Fürstin zu Fürstenberg, Laurence Graff,
H.R.H. Prince Pavlos of Greece, Alicia Koplowitz,
Viscount Linley, Robert Manoukian,
Rosita, Duchess of Marlborough,
Dimitri Mavrommatis,
Countess Daniela Memmo d'Amelio, Usha Mittal,
Leopoldo Rodés, Çiğdem Simavi

CHRISTIE'S UK

CHAIRMAN'S OFFICE

Viscount Linley, Chairman
Noël Annesley, Honorary Chairman;
Richard Roundell, Vice Chairman;
Robert Copley, Deputy Chairman;
The Earl of Halifax, Deputy Chairman;
Francis Russell, Deputy Chairman;
Julia Delves Broughton, James Hervey-Bathurst,
Amin Jaffer, Orlando Rock,
Nicholas White, Mark Wrey

SENIOR DIRECTORS

Dina Amin, Daniel Baade, Philip Belcher,
Jeremy Bentley, Ellen Berkeley, Jill Berry,
Giovanna Bertazzoni, Prof. Dr. Dirk Boll,
Peter Brown, James Bruce-Gardyne,
Olivier Camu, Sophie Carter, Benjamin Clark,
Christopher Clayton-Jones, Karen Cole,
Isabelle de La Bruyere, Leila de Vos,
Nicole Dembinska, Paul Dickinson,
Harriet Drummond, Julie Edelson,
Hugh Edmeades, David Elswood,
David Findlay, Margaret Ford, Daniel Gallen,
Philippe Garner, Jane Griffiths, Karen Harkness,
Philip Harley, James Hastie, Paul Hewitt,
Rachel Hilderley, Mark Hinton, Nick Hough,
Michael Jeha, Hugues Joffe, Donald Johnston,
Erem Kassim-Lakha, William Lorimer,
Catherine Manson, John McDonald,
Nic McElhatton (Chairman, South Kensington),
Alexandra McMorow, Jeremy Morrison,
Nicholas Orchard, Francis Outred,
Clarice Pecori-Giraldi, Benjamin Peronnet,
Henry Pettifer, Steve Phipps, Will Porter,
Paul Raison, Tara Rastrick, William Robinson,
John Stainton, Alexis de Tiesenhausen,
Lynne Turner, Jay Vincze, Andrew Ward,
David Warren, Andrew Waters,
Harry Williams-Bulkeley, Martin Wilson,
André Zlattinger

DIRECTORS

Richard Addington, Zoe Ainscough,
Georgiana Aitken, Marco Almeida, Maddie Amos,
Simon Andrews, Helen Baker, Karl Barry,
Rachel Beattie, Sven Becker, Jane Blood,
Piers Boothman, David Bowes-Lyon,
Anthony Brown, Lucy Brown, Robert Brown,
Grace Campbell, Lucy Campbell, Jason Carey,
Romilly Collins, Ruth Cornett, Sigrun Danielsson,
Armelle de Laubier-Rhally, Sophie DuCret,
Anna Evans, Arne Everwijn, Adele Falconer,
Nick Finch, Peter Flory, Elizabeth Floyd,
Christopher Forrest, Giles Forster, Patricia Frost,
Sarah Ghinn, Zita Gibson, Alexandra Gill,
Sebastian Goetz, John Green, Simon Green,
David Gregory, Mathilde Heaton,
Annabel Hesketh, Sydney Hornsby,
Peter Horwood, Simon James, Sabine Kegel,
Hans-Peter Keller, Tjabel Klok, Quincy Kresler,
Robert Lagneau, Nicholas Lambourn,
Joanna Langston, Tina Law, Darren Leak,
Adriana Leese, Brandon Lindberg, Laura Lindsay,

David Llewellyn, Murray Macaulay,
Sarah Mansfield, Nicolas Martineau,
Roger Massey, Joy McCall, Neil McCutcheon,
Daniel McPherson, Neil Millen, Edward Monagle,
Jeremy Morgan, Leonie Moschner,
Giles Mountain, Chris Munro, Rupert Neelands,
Liberte Nuti, Beatriz Ordoñez, Rosalind Patient,
Keith Penton, Romain Pingannaud,
Sara Plumbly, Caroline Porter, Michael Prevezer,
Anne Qaimmaqami, Marcus Rädecke,
Pedram Rasti, Amjad Rauf, Sandra Romito,
Tom Rooth, Alice de Roquemaurel,
Francois Rothlisberger, Patrick Saich,
Tim Schmelcher, Rosemary Scott, Tom Scott,
Nigel Shorthouse, Dominic Simpson, Nick Sims,
Katie Siveyer, Nicola Steel, Robin Stephenson,
Kay Sutton, Rakhi Talwar, Nicolette Tomkinson,
Jane Turner, Thomas Venning, Sophie Wiles,
Mark Wilkinson, Bernard Williams,
Georgina Wilsenach, Toby Woolley, Geoff Young

ASSOCIATE DIRECTORS

Guy Agazarian, Cristian Albu, Jennie Amos,
Ksenia Apukhtina, Katharine Arnold,
Alexis Ashot, Alexandra Baker,
Fiona Baker, Virginie Barocas-Hagelauer,
Carin Baur, Sarah Boswell, Mark Bowis,
Clare Bramwell, John Caudle, Dana Chahine,
Marie-Louise Chaldecott, Sophie Churcher,
Marion Clermont, Helen Culver Smith,
Laetitia Delaloye, Charlotte Delaney,
Cristiano De Lorenzo, Freddie De Rougemont,
Grant Deudney, Claudia Dilley,
Eva-Maria Dimitriadis, Howard Dixon,
Virginie Dulucq, Joe Dunning, Antonia Essex,
Kate Flitcroft, Nina Foote, Eva French,
Pat Galligan, Keith Gill, Andrew Grainger,
Leonie Grainger, Julia Grant, Pippa Green,
Angus Granlund, Christine Haines, Coral Hall,
Charlotte Hart, Evelyn Heathcoat Amory,
Anke Held, Valerie Hess, Carolyn Holmes,
Amy Huitson, Adrian Hume-Sayer,
James Hyslop, Helena Ingham, Pippa Jacomb,
Guady Kelly, Clementine Kerr, Hala Khayat,
Alexandra Kindermann, Mark Henry Lampé,
Tom Legh, Timothy Lloyd, Graeme Maddison,
Stephanie Manstein, Astrid Mascher,
Michelle McMullan, Kateryna Merkalenko,
Toby Monk, Sarah O'Brien, Samuel Pedder-Smith,
Suzanne Pennings, Louise Phelps, Sarah Rancans,
Lisa Redpath, David Rees, Alexandra Reid,
Sumiko Roberts, Sangeeta Sachidanantham,
Pat Savage, Catherine Scantlebury,
Julie Schutz, Hannah Schweiger, Mark Silver,
James Smith, Graham Smithson, Mark Stephen,
Annelies Stevens, Charlotte Stewart,
Dean Stimpson, Gemma Sudlow,
Dominique Suiveng, Cornelia Svedman,
Nicola Swain, Iain Tarling, Sarah Tennant,
Timothy Triptree, Flora Turnbull, Lisa Varsani,
Julie Vial, Anastasia von Seibold, Amelia Walker,
Tony Walshe, Chris White, Rosanna Widen,
Ben Wiggins, Annette Wilson, Julian Wilson,
Elissa Wood









GATE VILLAGE 5, PODIUM LEVEL, DUBAI INTERNATIONAL FINANCIAL CENTRE, DUBAI, UNITED ARAB EMIRATES
+971 (0)4 425 5647 TELEPHONE +971 (0)4 425 5639 FACSIMILE