

D630 0.62



INTERNATIONAL
GEMOLOGICAL
INSTITUTE

SCIENTIFIC LABORATORY FOR THE IDENTIFICATION AND GRADING
OF DIAMONDS AND COLORED STONES
EDUCATIONAL PROGRAMS

Expertise issued by I.G.I. Head Office and Laboratories

New York • Los Angeles • Toronto
Antwerp • Mumbai • Bangkok • Tokyo • Hong Kong
www.igiworldwide.com

NATURAL COLOR DIAMOND IDENTIFICATION REPORT

REPORT NUMBER: 9407201

DATE: 08/01/2005

LABORATORY REPORT (ORIGINAL)

TO WHOM IT MAY CONCERN

DESCRIPTION: ONE NATURAL DIAMOND

SHAPE AND CUTTING STYLE: ROUND BRILLIANT CUT

Measurements: 5.60 - 5.67 x 3.23 MM.

Weight: 0.62 CT.

COLOR:

Primary Color: GRAY

Modifier: NONE

Saturation: S5

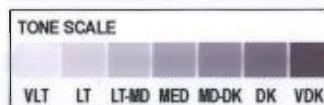
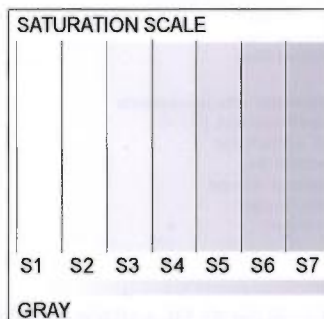
Tone: LIGHT MEDIUM

Origin: NATURAL

FLUORESCENCE: NONE



PHOTO ENLARGED



COMMENTS: PRIMARY FASHION COLOR OF THIS DIAMOND INCLUDES:
SILVER BIRCH, ETC.

INTERNATIONAL GEMOLOGICAL INSTITUTE

By: *International Gemological Institute*

The gemstone described in this Natural Color Diamond Identification and Grading Report ("Report") has been graded, tested, analyzed, examined and/or inscribed by International Gemological Institute ("I.G.I."). I.G.I. employee utilize those techniques and equipment currently available to I.G.I., including, without limitation, 10X magnification, corrected triplet loupe and binocular microscope, master color comparison diamonds, non-contact-optical measuring device, and such other instruments and/or processes as deemed appropriate by I.G.I.. This Report includes advanced security features. A duly accredited gemologist or jeweler can advise you with respect to the importance of and interrelationship between cut, color, clarity and carat weight. In our opinion, this diamond falls in a primary color group as specified in this report, however, it may be open to interpretation but in no way does it denote the diamonds rarity, value, or beauty.

THIS REPORT IS NEITHER A GUARANTEE, VALUATION NOR APPRAISAL OF THE GEMSTONE DESCRIBED HEREIN.

