

CLOCKS MONTHLY UPDATE

June 2009

CENTURIES OF STYLE,
KING STREET

02 June 2009

INTERIORS,
SOUTH KENSINGTON

02 June 2009

IMPORTANT ENGLISH
FURNITURE AND CLOCKS,
KING STREET

04 June 2009

IMPORTANT EUROPEAN
FURNITURE,
ROCKEFELLER CENTER

09 June 2009

IMPORTANT WATCHES,
ROCKEFELLER CENTER

10 June 2009

INTERIORS,
SOUTH KENSINGTON

16 June 2009

INTERIORS,
ROCKEFELLER CENTER

16 June 2009

IMPORTANT MOBILIER ET
OBJETS D'ART, PARIS

24 June 2009

INTERIORS, SOUTH KENSINGTON

30 June 2009

INTERIORS,
ROCKEFELLER CENTER

30 June 2009



CHRISTIE'S

MESSAGE FROM JAMIE COLLINGRIDGE

Our focus this month is on English clocks from the 'Golden Age' of English clockmaking. There will be fine examples by several of the great makers – Thomas Tompion, Joseph Knibb and Daniel Quare – in our 4 June sale at King Street. If you are interested in porcelain, do have a look at the 2 June sale, which includes a very interesting and unusual porcelain-cased musical clock by Rimbault.

And if you are looking for something altogether more flamboyant – and certainly completely different from the aforementioned English clocks – then take a look at the Cartier clock we will be offering in New York on 10 June.

Wherever your tastes may lie, I hope you will enjoy our June selection.

Kind regards

Jamie Collingridge

International Head of Clock Department

jcollingridge@christies.com

Tel. +44 20 7389 2223

Fax. +44 20 7389 2504



CHRISTIE'S

CENTURIES OF STYLE, KING STREET

02 June 2009



Lot 240
A CHELSEA PORCELAIN GILT-METAL MOUNTED
STRIKING MUSICAL TABLE CLOCK
CIRCA 1756-58
20 1/4 in. (52.8 cm.) high
£20,000-30,000

FIND OUT MORE AT
christies.com

BY SEARCHING SALE #

7731

CHRISTIE'S

INTERIORS, SOUTH KENSINGTON

02 June 2009



Lot 439
A FRENCH ORMOLU STRIKING EIGHT DAY
CARTEL CLOCK
RIZZOLI, PARIS
CIRCA 1870
27½ in. (70 cm.) high
£300-500



Lot 568
A REGENCY MAHOGANY AND BRASS-MOUNTED
STRIKING EIGHT DAY TABLE CLOCK
PHILIP GILBERT, LONDON
CIRCA 1820
17¼ in. (45 cm.) high
£700-1,000



Lot 635
A GILT BRASS ATMOS CLOCK ON GREEN
MARBLE BASE
JAEGER-LECOULTRE, GENEVA
LATE 20TH CENTURY
9½ in. (24 cm.) high
£400-600



Lot 779
A GEORGE IV MAHOGANY STRIKING AND QUARTER
CHIMING TABLE CLOCK
HENRY BORRELL, LONDON
CIRCA 1820
17¼ in. (45 cm.) high
£1,200-1,800

FIND OUT MORE AT
christies.com

BY SEARCHING SALE #

5907

439 568

635 779

CHRISTIE'S

page three

IMPORTANT ENGLISH FURNITURE AND CLOCKS, KING STREET

04 June 2009



Lot 31

A GEORGE I WALNUT AND FEATHER-BANDED
STRIKING EIGHT DAY LONGCASE CLOCK

DANIEL QUARE AND STEPHEN HORSEMAN,
LONDON, NO.199.

CIRCA 1720

110 in. (279 cm.) high,
20½ in. (52 cm.) wide,
10 in. (25 cm.) deep

£40,000-60,000

Lot 86

A CHARLES II OLIVEWOOD OYSTER-VENEERED AND
FLORAL MARQUETRY GRANDE SONNERIE STRIKING
EIGHT DAY LONGCASE CLOCK

JOSEPH KNIBB, LONDON

CIRCA 1685

72½ in. (184 cm.) high;
17½ in. (45 cm.) wide;
9¼ in. (25 cm.) deep

£70,000-100,000

FIND OUT MORE AT

christies.com

BY SEARCHING SALE #

7727

IMPORTANT ENGLISH FURNITURE AND CLOCKS, KING STREET

04 June 2009



Lot 119
A VICTORIAN MAHOGANY MONTH GOING
WALL REGULATOR
E. J. DENT, LONDON, NO. 673.
CIRCA 1845
65 in. (165 cm.) high;
11¼ in. (28.5 cm.) wide;
8½ in. (21.5 cm.) deep
£15,000–20,000

FIND OUT MORE AT
christies.com

BY SEARCHING SALE #

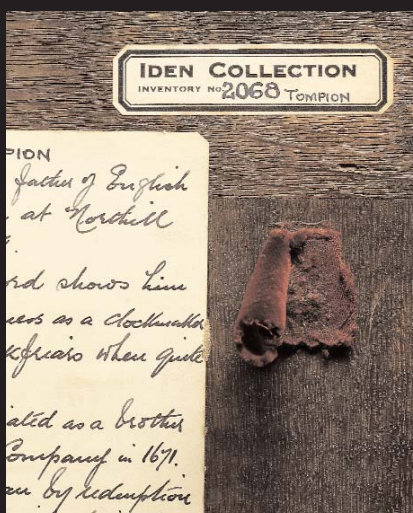
7727

CHRISTIE'S

page five

IMPORTANT ENGLISH FURNITURE AND CLOCKS, KING STREET

04 June 2009



Lot 80

A WILLIAM III WALNUT AND BURR-WALNUT
STRIKING MONTH-GOING LONGCASE CLOCK
THOMAS TOMPION, LONDON, NO. 301.

CIRCA 1698

89½ in. (227 cm.) high;
18½ in. (47.5 cm.) wide;
10¼ in. (26 cm.) deep

£200,000-300,000

FIND OUT MORE AT
christies.com

BY SEARCHING SALE #

7727

CHRISTIE'S

IMPORTANT ENGLISH FURNITURE AND CLOCKS, KING STREET

04 June 2009



Lot 81

A WILLIAM AND MARY BRASS-MOUNTED EBONY STRIKING EIGHT DAY TABLE CLOCK WITH PULL QUARTER REPEAT AND UNUSUAL PENDULUM LOCKING SYSTEM

DANIEL QUARE, LONDON

CIRCA 1690

14½ in. (37 cm.) high, handle down;

10½ in. (26 cm.) wide;

6½ in. (16.5 cm.) deep

£50,000–80,000

Lot 117

A VICTORIAN GIANT GILT-BRASS STRIKING AND REPEATING EIGHT DAY CARRIAGE CLOCK

JAMES MCCABE, ROYAL EXCHANGE, LONDON, NO. 2739

CIRCA 1850

8½ in. (21.5 cm.) high, handle down;

6 in. (15.5 cm.) wide;

5½ in. (13.5 cm.) deep

£12,000–18,000

FIND OUT MORE AT
christies.com

BY SEARCHING SALE #

7727

81

117

CHRISTIE'S

page seven

IMPORTANT ENGLISH FURNITURE AND CLOCKS, KING STREET

04 June 2009



Lot 115

A WILLIAM III WALNUT AND FLORAL MARQUETRY
STRIKING MONTH GOING LONGCASE CLOCK

JOSEPH WINDMILLS, LONDON

CIRCA 1695

85 in. (216 cm.) high;
19½ in. (49.5 cm.) wide;
10¼ in. (26 cm.)

£20,000–30,000

Lot 116

A WILLIAM AND MARY WALNUT STRIKING EIGHT
DAY LONGCASE CLOCK

JOSEPH KNIBB, LONDON

CIRCA 1690

78¼ in. (198.5 cm.) high;
17½ in. (44.5 cm.) wide;
9½ in. (24 cm.) deep

£40,000–60,000

FIND OUT MORE AT

christies.com

BY SEARCHING SALE #

7727

115

116

CHRISTIE'S

page eight

IMPORTANT EUROPEAN FURNITURE, ROCKEFELLER CENTER

09 June 2009



Lot 177

A LATE LOUIS XV ORMOLU CARTEL CLOCK
BY FRANÇOIS VERNAUX, PARIS, THE CASE BY ROBERT OSMOND, THIRD QUARTER 18TH CENTURY

18½ in. (47 cm.) high,
9 in. (22.5 cm.) wide

\$4,000–6,000

Lot 181

AN EMPIRE ORMOLU AND PATINATED BRONZE
MANTEL CLOCK

EARLY 19TH CENTURY
14½ in. (37.5 cm.) high,
12 in. (30.5 cm.) wide,
4½ in. (11.5 cm.) deep

\$7,000–10,000

Lot 262

A LOUIS XV ORMOLU STRIKING CARTEL CLOCK
BY LEFAUCHEUR, PARIS, *CIRCA* 1745

34 in. (86.5 cm.) high

\$12,000–18,000

Lot 226

A LATE LOUIS XVI ORMOLU, PATINATED-BRONZE
AND ROUGE GRIOTTE MARBLE MANTEL CLOCK
THE DIAL SIGNED 'ROBIN' AND 'DUBUISSON', *CIRCA*
1785–1790

15½ in. (40 cm.) high,
23 in. (58.5 cm.) wide,
4¾ in. (12 cm.) deep

\$20,000–30,000



FIND OUT MORE AT
christies.com

BY SEARCHING SALE #

2172

177

181

262

226

CHRISTIE'S

page nine

IMPORTANT EUROPEAN FURNITURE, ROCKEFELLER CENTER

09 June 2009



Lot 264

**A LOUIS XV ORMOLU-MOUNTED
GREEN AND POLYCHROME-PAINTED BRACKET
CLOCK**

THE WORKS SIGNED 'BALTHAZAR MARTINOT PARIS',
MOVEMENT AND DIAL PROBABLY EARLY 18TH
CENTURY AND ASSOCIATED, THE CARCASE MID-18TH
CENTURY

42½ in. (107.5 cm.) high

\$5,000-8,000

Lot 271

A REGENCY ORMOLU SHIPS CLOCK

THE DIAL SIGNED 'JW BENSON', LONDON,
EARLY 19TH CENTURY

11 in. (28 cm.) diameter

\$1,500-2,500

Lot 193

**A LOUIS XV ORMOLU, PATINATED BRONZE AND
RED-PAINTED PENDULE A L'ELEPHANT'**

CIRCA 1750, THE ORMOLU ATTRIBUTED TO JEAN-
JOSEPH DE SAINT-GERMAIN, THE DIAL SIGNED
ETIENNE LENOIR A PARIS

19½ in. (49.5 cm.) high,

14½ in. (37 cm.) wide

\$60,000-100,000

FIND OUT MORE AT
christies.com

BY SEARCHING SALE #

2172

264

271

193

CHRISTIE'S

page ten

IMPORTANT WATCHES, ROCKEFELLER CENTER

10 June 2009



Lot 314

SWISS. A GILT, CHALCEDONY AND IVORY TRIPLE
CALENDAR DESK CLOCK WITH MOON PHASES
UNSIGNED, MOVEMENT NO 95198, 20TH CENTURY
120 mm. diameter

\$1,000–1,500

Lot 315

GENEVA WATCH CO. A GILT, ENAMEL AND MOTHER-
OF-PEARL MINUTE REPEATING DESK CLOCK
SIGNED GENEVA WATCH CO., CASE NO. 12824,
CIRCA 1930
89 cm. high

\$2,000–3,000

Lot 316

CARTIER. A BELLE EPOQUE SILVER AND ENAMEL
QUARTER REPEATING TABLE CLOCK
SIGNED CARTIER, MOVEMENT NO. 652, CASE NO.
1867, CIRCA 1915
62 mm. high

\$4,000–6,000

FIND OUT MORE AT
christies.com

BY SEARCHING SALE #
2161

314

315

316

CHRISTIE'S

page eleven

IMPORTANT WATCHES, ROCKEFELLER CENTER

10 June 2009



Lot 366

CARTIER. A MAGNIFICENT AND IMPRESSIVE
18K WHITE GOLD, DIAMOND, EMERALD, ONYX
AND ROCK CRYSTAL MYSTERY CLOCK WITH
CHIMING MECHANISM

\$200,000-300,000



FIND OUT MORE AT
christies.com

BY SEARCHING SALE #
2161

CHRISTIE'S

INTERIORS, SOUTH KENSINGTON

16 June 2009



Lot 50
A WILLIAM IV MAHOGANY STRIKING TABLE CLOCK
G. H. IVE, LONDON
CIRCA 1830
18 in. (46 cm.)
£600-900



Lot 53
AN EDWARDIAN MAHOGANY STRIKING MANTEL CLOCK
FIRST QUARTER 20TH CENTURY
13½ in. (33.5 cm.) high
£400-600



Lot 56
A VICTORIAN MINIATURE BRASS INLAID MAHOGANY TABLE TIMEPIECE
BATEMAN, LONDON.
CIRCA 1840
12½ in. (32 cm.) high
£600-900



Lot 59
A VICTORIAN MINIATURE ROSEWOOD TABLE TIMEPIECE
HARVEY, DENTON AND CO. LONDON.
CIRCA 1840
11½ in. (29 cm.) high
£1,200-1,800

FIND OUT MORE AT
christies.com

BY SEARCHING SALE #

5913

50

53

56

59

CHRISTIE'S

page thirteen

INTERIORS, SOUTH KENSINGTON

16 June 2009



Lot 47
AN EDWARDIAN BRASS-MOUNTED WALNUT
QUARTER STRIKING BRACKET CLOCK AND
WALL BRACKET
FIRST QUARTER 20TH CENTURY
20½ in. (52 cm.) high
£400-600

Lot 61
A GEORGE III BURR YEW STRIKING EIGHT DAY
LONGCASE CLOCK
JOHN MASTERS, DARTMOUTH
CIRCA 1780
84½ in. (214 cm.) high
£1,200-1,800

Lot 63
A WILLIAM IV BRASS-MOUNTED MAHOGANY TRIPLE
PAD TOP STRIKING EIGHT DAY TABLE CLOCK
WILLIAM LAMBERT, LONDON
CIRCA 1830
16 in. (40.5 cm.) high
£1,200-1,800

FIND OUT MORE AT
christies.com

BY SEARCHING SALE #

5913

47

61

63

CHRISTIE'S

page fourteen

INTERIORS, SOUTH KENSINGTON

16 June 2009



Lot 65

A VICTORIAN EBONISED STRIKING EIGHT DAY CALENDARIAL TABLE CLOCK

A HARVEY, LONDON

CIRCA 1880

15¼ in. (39.5 cm.) high

£1,500–2,000



Lot 67

A VICTORIAN MAHOGANY EIGHT DAY WALL REGULATOR

E. J. DENT, LONDON NO. 636.

THIRD QUARTER 19TH CENTURY

63 in. (160 cm.) high

£5,000–8,000



Lot 69

A GEORGE III MINIATURE BRASS-MOUNTED EBONISED TABLE TIMEPIECE

RICHARD GANTHONY, LONDON, No. 214.

CIRCA 1800

12 in. (30.5 cm.) high

£1,200–1,800



Lot 95

A FRENCH BRASS AND PATINATED BRONZE STRIKING ELEPHANT CLOCK MARTINOT, PARIS.

LATE 19TH CENTURY

15¼ in. (39 cm.) high

£1,500–2,000

FIND OUT MORE AT

christies.com

BY SEARCHING SALE #

5913

65	67
69	95

CHRISTIE'S

page fifteen

INTERIORS, SOUTH KENSINGTON

16 June 2009



Lot 104

A GEORGE III PAINTED LARGE DIAL TIMEPIECE
JAMES KING, LONDON
FIRST QUARTER 19TH CENTURY

22 in. (56 cm.) diameter

£1,500–2,000



Lot 315

A FRENCH ORMOLU AND MARBLE STRIKING MANTEL CLOCK

LATE 19TH CENTURY

15½ in. (39 cm.) high

£600–800

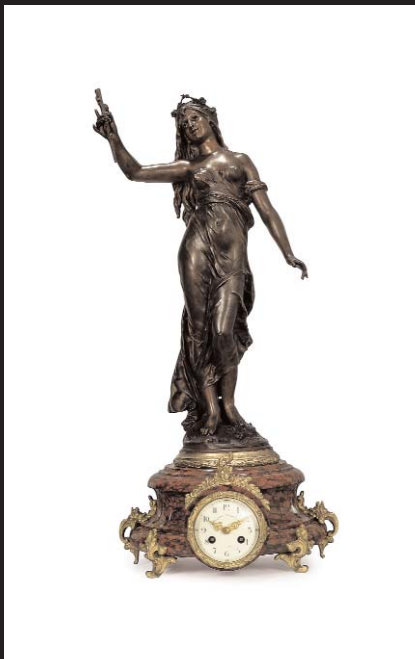
Lot 318

A FRENCH BRASS-MOUNTED ROUGE GRIOTTE BRONZED METAL FIGURAL STRIKING MANTEL CLOCK

LATE 19TH CENTURY

25 in. (63.5 cm.) high

£700–1,000



Lot 321

A FRENCH GILT-WOOD WHEEL BAROMETER
CHEVALLIER, BAR-LE-DUC

LATE 18TH CENTURY

38¼ in. (97 cm.) high

£400–600

FIND OUT MORE AT
christies.com

BY SEARCHING SALE #

5913

104 315

318 321

CHRISTIE'S

page sixteen

INTERIORS, ROCKEFELLER CENTER

16 June 2009



Lot 767

A FRENCH ORMOLU STRIKING MANTEL CLOCK, THE DIAL MARKED 'POMMERETTE RUE ROYALE PARIS', 19TH CENTURY

29 in. (73.5 cm.) high,
19 1/4 in. (50 cm.) wide,
10 in. (25.5 cm.) deep

\$2,000-3,000



Lot 684

A FRENCH MIRRORRED, MOTHER-OF-PEARL AND BLACK ENAMELED DESK CLOCK, BY CARTIER, FACE SIGNED 'CARTIER', INSCRIBED 'CARTIER NO 1112' TO THE UNDERSIDE

5 1/2 in. (14 cm.) high

£6,000-9,000

Lot 948

A FRENCH GILT-BRONZE MOUNTED SLATE MANTEL CLOCK,

EARLY 20TH CENTURY

20 1/4 in. (53 cm.) high

\$700-900



Lot 801

A LOUIS PHILIPPE FLORAL PORCELAIN MANTEL CLOCK,

MID 19TH CENTURY

15 in. (38 cm.) high,

9 1/2 in. (24 cm.) wide,

6 in. (15 cm.) deep

\$1,000-1,500



FIND OUT MORE AT
christies.com

BY SEARCHING SALE #

2176

767 684

948 801

CHRISTIE'S

page seventeen

INTERIORS, ROCKEFELLER CENTER

16 June 2009



Lot 893
A CHARLES X ORMOLU PORTICO CLOCK,
CIRCA 1825,
lacking pendulum
19½ in. (50 cm.) high
\$1,500–2,500

Lot 685
A BRASS AND GLASS STARBURST WALL CLOCK,
20TH CENTURY, THE DIAL POSSIBLY LATER AND WITH
LATER MOVEMENT
22 in. (56 cm.) diameter
\$1,500–2,500

Lot 807
A CONTINENTAL GILT-METAL AND CUT-GLASS
LYRE-FORM CLOCK,
LATE 19TH CENTURY
27 in. (68.5 cm.) high
\$500–700

FIND OUT MORE AT
christies.com

BY SEARCHING SALE #
2176

893

685

807

CHRISTIE'S

page eighteen

INTERIORS, ROCKEFELLER CENTER

16 June 2009



Lot 803

A FRENCH PATINATED-METAL MOUNTED SLATE AND PAINTED ENAMEL STRIKING MANTEL CLOCK, RETAILED BY BAILEY BANKS & BIDDLE, PHILADELPHIA, THE MOVEMENT MARKED 'BM 3266' and 'MÉDAILLE DE BRONZE S MARTI ET CIE', LATE 19TH CENTURY
15½ in. (39.5 cm.) high,
11½ in. (29 cm.) wide,
7¼ in. (19.5 cm.) deep

\$700-900

Lot 788

A FRENCH GILT-BRONZE, GLASS AND TURQUOISE ENAMELED STRIKING MANTEL CLOCK, EARLY 20TH CENTURY
14 in. (35.5 cm.) high,
7 in. (18 cm.) wide,
6 in. (15 cm.) deep

\$800-1,200

Lot 1019

A FRENCH GILT-BRONZE MOUNTED CHINESE TURQUOISE-GLAZED PORCELAIN STRIKING MANTEL CLOCK AND CANDLESTICK GARNITURE, LATE 19TH EARLY 20TH CENTURY, with giltwood stand
The clock 13 in. (33 cm.) high (3)

\$1,000-1,500



FIND OUT MORE AT
christies.com

BY SEARCHING SALE #

2176

803 788

1019

CHRISTIE'S

page nineteen

INTERIORS, ROCKEFELLER CENTER

16 June 2009



Lot 1024

A FRENCH POLYCHROME-PAINTED COMTOIS
TALLCASE CLOCK,
19TH CENTURY,
the dial signed 'EUSEBIO LEFLER FRIAS' and
'VALLADOLID'
90½ in. (230 cm.) high
\$1,000–1,500

Lot 976

AN EDWARDIAN PAINT-DECORATED SATINWOOD
TALLCASE CLOCK,
EARLY 20TH CENTURY,
the dial inscribed 'ROBT HODGKINS LONDON'
94 in. (239 cm.) high
\$3,000–5,000

FIND OUT MORE AT
christies.com

BY SEARCHING SALE #
2176

1024

976

CHRISTIE'S

page twenty

INTERIORS, ROCKEFELLER CENTER

16 June 2009



Lot 1047
A GERMAN GRANDE SONNERIE BRACKET CLOCK,
LATE 18TH CENTURY,
the dial inscribed and works inscribed;
in an associated fruitwood case
14 in. (35.5 cm.) high
\$800-1,200



Lot 1044
A FRENCH OPALINE BLUE AND CLEAR GLASS AND
PAINTED PORCELAIN MANTEL CLOCK,
EARLY 20TH CENTURY
12 in. (30.5 cm.) high,
7 in. (18 cm.) wide,
6 in. (15 cm.) deep
\$600-800



Lot 789
A FRENCH BRASS, GLASS AND CHAMPLEVE ENAMEL
MANTEL CLOCK,
LATE 19TH EARLY 20TH CENTURY
10½ in. (26.5 cm.) high,
6½ in. (16.5 cm.) wide,
5½ in. (14 cm.) deep
\$800-1,200



Lot 805
A FRENCH ORMOLU, GLASS AND ROUGE MARBLE
STRIKING TABLE CLOCK,
LATE 19TH EARLY 20TH CENTURY,
the movement marked 'Lemerle Charpentier F. ant de
Bronzes 453 Paris'
20 in. (51 cm.) high,
11¼ in. (28.5 cm.) wide,
6¾ in. (17 cm.) deep
\$1,500-2,000

FIND OUT MORE AT
christies.com

BY SEARCHING SALE #

2176

1047

1044

789

805

CHRISTIE'S

page twenty-one

INTERIORS, ROCKEFELLER CENTER

16 June 2009



Lot 553
A GILT-BRONZE FIGURAL HANGING CARTEL CLOCK,
20TH CENTURY
16 in. (40.5 cm.) high, without chains
\$700-900

Lot 555
A FRENCH BRASS-INLAID EBONIZED,
RED-TORTOISESHELL AND BOULLE MARQUETRY
WALL CLOCK
19TH CENTURY,
the dial inscribed 'BIENNASSEZ A CAEN'
26 in. (66 cm.) high,
25¼ in. (64 cm.) wide
\$600-800

Lot 608
A FRENCH ORMOLU-MOUNTED BRASS-INLAID
TORTOISESHELL AND BOULLE MARQUETRY
BRACKET CLOCK
19TH CENTURY
Overall 53 in. (134.5 cm.) high
\$1,000-1,500

FIND OUT MORE AT
christies.com

BY SEARCHING SALE #
2176

553

555

608

CHRISTIE'S

page twenty-two

IMPORTANT MOBILIER ET OBJETS D'ART, PARIS

24 June 2009



Lot 172
A LOUIS XVI ORMOLU MOUNTED BLUE AND
WHITE ENAMEL SKELETTE CLOCK
17 in. (43 cm.) high
€30,000–50,000

Lot 214
A LOUIS XV ORMOLU MANTEL CLOCK
BY JEAN-JOSEPH DE SAINT GERMAIN,
THE MOVEMENT BY STOLLEWERCK
18½ in. (47 cm.) high,
13½ in. (34 cm.) wide,
7¼ in. (20 cm.) deep
€15,000–20,000

Lot 314
A LOUIS-PHILIPPE ORMOLU MANTEL CLOCK
15½ in. (39.5 cm.) high,
15½ in. (39.5 cm.) long,
5 in. (12.5 cm.) deep
€1,000–2,000

Lot 362
A LOUIS XVI ORMOLU MANTEL CLOCK,
NORTH EUROPEAN
22½ in. (57 cm.) high,
9 in. (23 cm.) long
€4,000–6,000

Lot 363
A LOUIS XVI ORMOLU CLOCK BY LEPAUTE
22 in. (56 cm.) high,
13¼ in. (34 cm.) long,
9 in. (33 cm.) deep
€4,000–6,000

Lot 378
AN EMPIRE ORMOLU MANTEL CLOCK
2 in. (44 cm.) high
€3,000–5,000

FIND OUT MORE AT
christies.com

BY SEARCHING SALE #

5570

172	214	314
362	363	378

CHRISTIE'S

page twenty-three

IMPORTANT MOBILIER ET OBJETS D'ART, PARIS

24 June 2009



Lot 379
AN EMPIRE ORMOLU MANTEL MAHOGANY CLOCK,
THE DIAL AND THE MOVEMENT
SIGNED BY JANVIER
13 in. (33 cm.) high,
7½ in. (18.2 cm.) long,
6¼ in. (16 cm.) deep
€15,000–25,000



Lot 382A
A LOUIS XVI ORMOLU AND WHITE MARBLE
SKELETON CLOCK,
THE DIAL SIGNED BY THIERY
20 in. (51 cm.) high,
15¾ in. (40 cm.) long
€6,000–8,000



Lot 402
A LOUIS XV ORMOLU – MOUNTED TULIPWOOD AND
AMARANTH REGULATEUR CLOCK
STAMPED BY ADRIEN-JÉRÔME JOLLAIN,
THE MOVEMENT BY JEAN-LOUIS BOUCHET
84 in. (214 cm.) high,
22½ in. (57 cm.) long,
10¼ in. (27 cm.) deep
€10,000–15,000



Lot 407
A LOUIS XV ORMOLU CARTEL CLOCK,
BY GILLES L'AÎNÉ
34¼ in. (87 cm.) high,
19¼ in. (49.5 cm.) long
€30,000–50,000

FIND OUT MORE AT
christies.com
BY SEARCHING SALE #
5570

379	382A
402	407

CHRISTIE'S

IMPORTANT MOBILIER ET OBJETS D'ART, PARIS

24 June 2009



Lot 421
AN EMPIRE ORMOLU SKELETON-CLOCK
13 in. (33 cm.) high,
13½ in. (35 cm.) long,
6½ in. (17 cm.) deep
€10,000–15,000

Lot 422
**A LOUIS XVI ORMOLU AND WHITE
MARBLE CLOCK,**
THE CASE BY ROBERT OSMOND AND
THE MOVEMENT BY ROBIN
20¾ in. (53 cm.) high,
12½ in. (32 cm.) long,
9½ in. (24 cm.) deep
€20,000–30,000

Lot 426
**A LATE LOUIS XVI ORMOLU AND WHITE
MARBLE MANTEL-CLOCK**
17 in. (43 cm.) high,
17½ in. (44.5 cm.) long,
5 in. (17 cm.) deep
€4,000–6,000

Lot 427
A LOUIS XVI STYLE MANTEL CLOCK
29¼ in. (74 cm.) high
€5,000–8,000

Lot 428
**A LOUIS XVI ORMOLU AND RED MARBLE
MANTLE CLOCK**
22 in. (56 cm.) high,
26¼ in. (67 cm.) long,
5¼ in. (14.5 cm.) deep
€12,000–18,000

Lot 472
AN EMPIRE ORMOLU CLOCK,
THE DIAL SIGNED BY VINCENT
17 in. (43 cm.) high,
9½ in. (24.5 cm.) long,
5¼ in. (14.5 cm.) deep
€3,000–5,000

FIND OUT MORE AT
christies.com
BY SEARCHING SALE #
5570

421	422	426
427	428	472

CHRISTIE'S

page twenty-five

IMPORTANT MOBILIER ET OBJETS D'ART, PARIS

24 June 2009



Lot 473
AN EMPIRE ORMOLU CLOCK,
PROBABLY ITALIAN
19 in. (48 cm.) high,
22 in. (56 cm.) long,
6 in. (15 cm.) deep
€6,000–10,000

Lot 486
A BOULLE-MARQUETRY CABINET AND AN
ASSOCIATED MANTEL CLOCK,
MID 19TH CENTURY
Clock – 44½ in. (113 cm.) high,
26½ in. (67 cm.) long,
10½ in. (27 cm.) deep
€8,000–12,000

Lot 503
A GOTHIC REVIVAL SILVERED BRONZE AND
ORMOLU MANTEL CLOCK
21½ in. (54 cm.) high,
11½ in. (28.5 cm.) long,
5½ in. (14 cm.) deep
€2,000–3,000

FIND OUT MORE AT
christies.com

BY SEARCHING SALE #

5570

473

486

503

CHRISTIE'S

page twenty-six

INTERIORS, SOUTH KENSINGTON

30 June 2009



Lot 691
AN EMPIRE BRONZE AND MARBLE FIGURAL
STRIKING MANTEL CLOCK
L. RAVRIO, PARIS. C/CA 1820
22½ in. (57 cm.) high
£1,800–2,500

Lot 692
A FRENCH BRASS AND PATINATED BRONZE STRIKING
MANTEL CLOCK AND GARNITURES
LATE 19TH CENTURY
The clock – 23¼ in. (59 cm.) high
The garnitures – 17½ in. (44.5 cm.) high
£300–500

Lot 693
A LOUIS PHILIPPE ORMOLU FIGURAL STRIKING
MANTEL CLOCK
SECOND QUARTER 19TH CENTURY
14¾ in. (37.5 cm.) high
£400–600

FIND OUT MORE AT
christies.com

BY SEARCHING SALE #

5914

691

692

693

CHRISTIE'S

page twenty-seven

INTERIORS, ROCKEFELLER CENTER

30 June 2009



Lot 669
A SWEDISH GILTWOOD CARTEL CLOCK,
20TH CENTURY
30 in. (76 cm.) high
\$1,000–1,500



Lot 785
A GERMAN PATINATED BRONZE MANTEL CLOCK,
INSCRIBED 'ANTON GRATH' WITH THE MONOGRAM
H.W. WITHIN AN H FOR THE FOUNDRY MARK,
SECOND QUARTER 20TH CENTURY
on marble base,
18 in. (46 cm.) high,
18 in. (46 cm.) wide,
4½ in. (11.5 cm.) deep
\$2,000–3,000



Lot 835
AN ART DECO MANTEL CLOCK AFTER THE ORIGINAL
LOCATED IN THE *IR.M.S. QUEEN MARY'S* CABIN
CLASS MAIN LOUNGE,
FOGBANK INDUSTRAIL ARTS, 2004, AFTER A DESIGN
BY CHARLES CAMERON BAILLIE,
Built to the original specifications
19¼ in. (48.9 cm.) high,
29 in. (73.7cm.) wide
\$5,000–7,000



Lot 909
AN AMERICAN GILT-BRONZE-MOUNTED CUT-GLASS
TABLE CLOCK,
BY SETH THOMAS, CONNECTICUT, LATE 19TH
CENTURY
11½ in. (29 cm.) high,
3¾ in. (9 cm.) wide,
3¾ in. (9 cm.) deep
\$300–500

FIND OUT MORE AT
christies.com
BY SEARCHING SALE #
2185

669 785

835 909

CHRISTIE'S

page twenty-eight

INTERIORS, ROCKEFELLER CENTER

30 June 2009

FIND OUT MORE AT
christies.com

BY SEARCHING SALE #

2185



Lot 892
A VICTORIAN MAHOGANY AND
ROSEWOOD TALL-CASE CLOCK
THE DIAL SIGNED 'J.H. JACKSON/TUNSTALL', THIRD
QUARTER 19TH CENTURY
93¼ in. (237 cm.) high,
23¾ in. (60.5 cm.) wide,
10¼ in. (26 cm.) deep
\$1,000–1,500



Lot 1062
AN ENGLISH MAHOGANY MANTEL CLOCK IN THE
FORM OF A TALL-CASE CLOCK
WITH SWISS WATCH MOVEMENT,
LATE 19TH/ EARLY 20TH CENTURY
20½ in. (52 cm.) high
\$600–800



Lot 1063
AN IRISH MAHOGANY MINIATURE
TIMEPIECE TALL-CASE CLOCK,
MID 19TH CENTURY,
The dial signed 'STEWART DUBLIN'
35¼ in. (91 cm.) high,
10¼ in. (27.5 cm.) wide,
6 in. (15 cm.) deep
\$1,000–1,500

892

1062

1063

CHRISTIE'S

page twenty-nine

INTERIORS, ROCKEFELLER CENTER

30 June 2009



Lot 1057
A FRENCH ORMOLU CIRCULAR STRIKING WALL
CLOCK,
THE DIAL SIGNED 'F. SENN/ A PARIS',
LATE 19TH / EARLY 20TH CENTURY
17½ in. (44.5 cm.) diameter
\$800-1,200

Lot 823
A SCARLET AND GILT-DECORATED
CIRCULAR HANGING CLOCK,
LATE 20TH CENTURY
20 in. (51 cm.) high,
13 in. (33 cm.) wide
\$300-500

Lot 1014
AN ENAMELED, ROSE QUARTZ AND GILT AND SIL-
VERED METAL MYSTERY TIMEPIECE
PROBABLY SWISS OR FRENCH,
EARLY 20TH CENTURY
10½ in. (27 cm.) high
\$1,000-1,500

FIND OUT MORE AT
christies.com

BY SEARCHING SALE #

2185

1057

823

1014

CHRISTIE'S

page thirty

INTERIORS, ROCKEFELLER CENTER

30 June 2009

FIND OUT MORE AT
christies.com

BY SEARCHING SALE #

2185



Lot 1035

A CHARLES X ORMOLU STRIKING MANTEL CLOCK,
FIRST HALF 19TH CENTURY

18 in. (46 cm.) high,
13½ in. (34.5 cm.) wide,
5½ in. (14 cm.) deep

\$1,000–1,500

Lot 952

A PAINTED AND PARCEL-GILT MANTEL CLOCK,
THE DIAL INSCRIBED 'ROBERT'

20 in. (51 cm.) high

\$400–600

Lot 1067

**A VICTORIAN JASPERWARE MOUNTED WALNUT
AND EBONIZED STRIKING MANTLE CLOCK,**
LATE 19TH CENTURY, THE FRENCH MOVEMENT
MARKED 'W.H. TOOKE' AND NUMBERED '4601.'

11¼ in. (30 cm.) high,
15¼ in. (38.5 cm.) wide,
6 in. (15 cm.) deep

\$700–900

Lot 1076

**A FRENCH GILT-METAL MOUNTED PAINTED
PORCELAIN STRIKING MANTEL CLOCK
AND GARNITURE,**

LATE 19TH CENTURY,
The clock 17 in. (43 cm.) high,
13 in. (33 cm.) wide,
7 in. (18 cm.) deep;
The candelabra each 14½ in. (37 cm.) high,
11 in. (28 cm.) wide

\$1,000–1,500



1035

952

1067

1076

CHRISTIE'S

page thirty-one

*For further information, additional images and condition reports,
please contact:*



Centuries of Style
King Street (Sale 7731)
Rodney Woolley
rwoolley@christies.com
+44(0) 20 7752 3231

Interiors
South Kensington (Sales 5907, 5913, 5914)
Alastair Chandler
achandler@christies.com
+44(0) 20 7389 2227

Important English Furniture and Clocks
King Street (Sale 7727)
Jamie Collingridge
jcollingridge@christies.com
+44(0) 20 7389 2223

**Important European Furniture, Works of Art,
Ceramics, Tapestries and Oriental Carpets**
New York (Sale 2172)
William Strafford
wstrafford@christies.com
+1 212 636 2348

Interiors, New York (Sale 2185)
Laura Layfer
llayfer@christies.com
+1 212 468 7117

Watches, New York (Sale 2161)
Kate Thomas
kthomas@christies.com
+1 212 636 2321

**Important Mobilier et Objets D'Art,
C ramiques Europ ennes et Orf vrerie**
Paris (Sale 5570)
Simon De Monicault
sdemonicault@christies.com
+33 (0)40 76 84 24

*Please note that lot numbers are subject to change, if you are interested in any clocks
we advise you to contact the appropriate specialist.*

CHRISTIE'S

VIEW LOTS AT www.christies.com

WATCH, HEAR and BID at Christie's auctions from your own computer. REGISTER today.

Christie's Live™ is an exciting feature that offers you a convenient way to bid in our auctions. Christie's Live™ combines real-time video and audio with clear bidding instructions to enable you to 'virtually' attend auctions at Christie's salerooms across the globe nearly anywhere you can access the internet.



CHRISTIE'S  LIVE™
Bid live in Christie's salerooms worldwide

CHRISTIE'S