

## 20TH CENTURY DECORATIVE ART & DESIGN AT CHRISTIE'S IN MAY



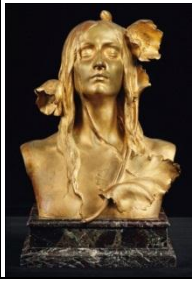
**London** – Christie's is pleased to announce details of the *20<sup>th</sup> Century Decorative Art & Design* sale which will take place on 3 May 2012. Comprising of 170 lots, with estimates ranging from £1,000 to £70,000, the sale is expected to realise in excess of £1.5 million. Spanning a wide variety of design movements across the 20<sup>th</sup> century the sale contains wonderful examples of Art Nouveau, Art Deco, Post-War, Post-Modern and Contemporary design with something for every collector. A strong British section highlights the importance of British designers in the 20<sup>th</sup> century and is led by works by Dante Gabriel Rossetti, William Morris and Edward William Godwin. An extraordinary Belgian interior designed by Jules Wabbes offers the opportunity to obtain pristine pieces of furniture and design from a studio flat which has remained virtually untouched and intact since 1965.

### ❧ FRENCH ART NOUVEAU GLASS ❧

The sale opens with cameo glass from Nancy, France by leading Art Nouveau makers Emile Gallé and Daum Frères. A *Mouettes charger* by Emile Gallé in turquoise glass overlaid in white and yellow has been worked with seagulls hovering over the sea with waves that pay homage to the Japanese woodcuts of Hokusai, (estimate: £20,000-30,000), *illustrated right*. The blaze of colour within the Daum collection is evident in the *Paysage D'Hiver* vase, *circa* 1890, which is estimated to realise between £15,000-20,000.



## ❧ ART NOUVEAU ❧



Complementing the selection of glass objects are works such as an outstanding bronze by Maurice Bouval (1863-1920), *Ophelia*, circa 1900 (estimate: £20,000-30,000), *illustrated left*, as well as furniture by Emile Gallé and a complete dining suite by P. A. Dumas in carved walnut. Additional highlights include an unusual *Chandelier Model 5026*, circa 1910, by the Swedish designer Böhlmarks A.B. (estimate: £8,000-12,000) and a clock by Alfred Daguet (1875-1942) which is estimated at £10,000-15,000.

## ❧ BELGIAN DESIGN ❧

It is extraordinary to be able to offer furnishings from two interiors designed by Jules Wabbes, the leading Belgian interior architect, who began his career as a photographer, before becoming an actor and an antiques dealer. The furnishings come directly from the interiors located in and around Brussels and date from the 1960s. Having remained intact, un-modified and



virtually unused since 1965, the apartment delivered an



environment of unparalleled sophistication and pieces such as the *Pair Of Livourne Settees*, 1964-1965, are in pristine condition (estimate: £10,000 – 15,000), *illustrated left*. In 1968, the same client commissioned from Wabbes a second series of furnishings for a villa in the suburbs of Brussels. Rarely does such uniquely provenanced group of works by one of Belgium's most celebrated interior designers appear on the market.

## ❧ ITALIAN POST-WAR DESIGN ❧



The quality of Italian Post-War design is illustrated by the Gio Ponti & Piero Fornasetti *Unique Credenza*, circa 1952, *illustrated left*. The lot was created for the Giulio Cesare, a transatlantic liner operated by the Societa' di Navigazione Italia, and decorated by Gio Ponti, Piero Fornasetti, Paolo di Poli and Nino Zoncado and is expected to fetch between £40,000 and £60,000. The lot was created for the Giulio Cesare, a transatlantic liner operated by the Società di Navigazione Italia, and decorated by Gio Ponti, Piero Fornasetti, Paolo di Poli and Nino Zoncado. The doors, decorated with card players, reflect the panels in one of the ship's lounges. A further highlight is the stunning anvil form dining table by Piero Bottoni (1903-1973); conceived in the 1930s, the concept of a single-pedestal base was highly innovative and later developed by Eero Saarinen (estimate: £20,000-30,000).

## ❧ BRITISH DECORATIVE ART ❧



Leading the strong selection of British furniture is one of Edward William Godwin's (1833-1886) most important works - the *Dromore Castle Bookcase*, circa 1870. This rare statement piece is one of only six examples commissioned by the Third Earl of Limerick for Dromore Castle, Ireland (estimate: £30,000-50,000), *illustrated left*). The Cotswolds furniture designed by Ernest Gimson and Ernest Barnsley comes with superb provenance reaching back to Arthur Ernest Barnsley's Upper Dorval House, Sapperton and an exquisitely crafted cabinet by Sidney Barnsley is offered for the first time having been passed down through the family who commissioned it. Amongst the other works from the Arts & Crafts movement is a magnificent Hammersmith carpet designed by William Morris (1834-1896) (estimate: £30,000 – 50,000).

## ❧ POST-MODERNISM & CONTEMPORARY DESIGN ❧

The sale culminates with works from the second half of the 20th Century. The *Up-5 Donna Chair* designed by Gaetano Pesce in 1969 is a widely recognizable design, but is rarely seen with its original stretch-jersey upholstery. This early example was purchased in a flat-packed form and upon breaking an airtight packaging seal, the chair inflated to the determined shape (estimate: £6,000-8,000), *illustrated right*. Also rare are the of tea and coffee sets, and jewellery commissioned by Alessi and Cleto Munari and designed by architects including Michael Graves, Richard Meier, Robert Venturi and Ettore Sottsass. The jewellery, such as the black onyx, lapis lazuli and turquoise ring (estimate: £4,000-6,000), designed by Peter Eisenman, was not developed beyond prototype stage.



# # #

*Images available on request*

*Visit Christie's Website at [www.christies.com](http://www.christies.com)*

*Complete catalogue available online at [www.christies.com](http://www.christies.com) or via the Christie's iPhone app*