

**For Immediate Release**  
29 March 2012

**CHRISTIE'S**

**Contact :** Cristiano de Lorenzo +44 7500 815 344 / +44 207 389 2283

[cdelorenzo@christies.com](mailto:cdelorenzo@christies.com)

**JEWELS FOR HOPE**  
**THE COLLECTION OF MRS LILY SAFRA**  
**OFFERED AT CHRISTIE'S GENEVA ON MAY 14**  
**TO BENEFIT TWENTY CHARITABLE INSTITUTIONS**

**INCLUDING THE LARGEST SINGLE-OWNER SELECTION OF JEWELS BY JAR EVER SEEN AT AUCTION**



**Four Seasons Hotel des Bergues, Geneva - Monday 14 May, at 8pm**

**Geneva** - Christie's has been entrusted with the sale of the magnificent jewellery collection of Mrs Lily Safra. All proceeds will be generously donated to 20 different charitable institutions. Regarded as a major philanthropist of our time, Mrs Safra is also a discerning connoisseur. This jewellery collection reflects her refined taste and its evolution throughout five decades, from the 1970s to the present day.

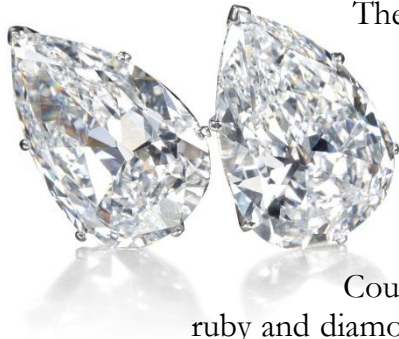
Featuring 70 lots, the collection of Mrs Lily Safra is estimated to realise in excess of \$20 million and includes important diamonds, rubies and sapphires, as well as an outstanding array of fine antique and period jewellery.

A special section of the sale will be dedicated to a group of extraordinary jewels by JAR, the majority of which were created specifically for Mrs Safra by the renowned jeweller between the 1980s and 2000s. Showcasing 18 pieces, this is the largest private collection of creations by JAR ever to be offered at auction.

**François Curiel, *International Head of the Jewellery Department***

*"A sublime collection of 70 rare jewels, comprising the very best in all styles, periods and makers, from the late 18th Century all the way to modern times, is enough to attract the attention of jewellery amateurs and professionals worldwide. When it includes also the largest group of creations by JAR ever to be offered at auction, it is bound to create a sensation. And when the entire proceeds of the sale are to be shared between 20 hand-picked charitable institutions in the four corners of the world, this landmark sale rises to a whole new level. Only a connoisseur with an eye as refined as that of Mrs Lily Safra could have collected such an ensemble of jewels, and only someone with her philanthropic conviction could have expressed such powerful support to worthwhile causes in all charitable fields. We are proud to be associated with such a commendable endeavour".*

## IMPORTANT GEMSTONES



The collection of Mrs Lily Safra features some of the finest gemstones a collector could dream of finding. The three solitaire rings illustrated on the previous page share some exceptional characteristics. They are each the best colour of their type and of most renowned origin, and weight over 30 carats. The 34.05 carat rectangular-cut diamond ring (D/VVS1 potentially flawless, Type IIa) is a perfect stone estimated at US\$3,600,000-5,000,000. Formerly in the collection of Luz Mila Patiño, Countess du Boisrouvray, the famous 32.08 carats cushion-shaped Burmese ruby and diamond ring by Chaumet is offered with an estimate of US\$3,000,000-5,000,000, while a 31.21 carats rectangular-cut Burmese sapphire and diamond ring, mounted by Boucheron, is estimated at US\$450,000-550,000.

A pair of 19.43 and 19.16 carat pear-shaped diamond ear clips add the final touch of magic. As individual stones they are important diamonds, as a pair they are without peer (respectively D/VS1, potentially Flawless, Type IIa and D/VVS2, potentially Flawless, Type IIa; estimate: US\$3,500,000-5,000,000; *illustrated top left*).

## THE LARGEST SINGLE-OWNER SELECTION OF JEWELS BY JAR EVER SEEN AT AUCTION

As a major patron of the arts and a collector in many fields, Mrs Lily Safra was naturally drawn to the work of JAR, considered by many as one of "the" jewellery artists of our time. Their creative friendship, based on a shared aesthetic sensitivity and sense of perfection, began in 1981.

Using materials as diverse as white and coloured diamonds, natural pearls, emeralds, sapphires and rubies, combined in the unique JAR style with tourmalines, garnets, coloured sapphires, amethysts and rubellites, Joel Rosenthal explored colour and form to create eighteen unique and extraordinary jewels for Mrs Lily Safra.



The imaginative design and quality of craftsmanship makes each jewel a true work of art, the result of the special collaboration between a collector and a designer who were united in their search for the very best.

JAR creations are so highly prized by their owners that they rarely come to auction and this is an extraordinary opportunity for any JAR lover to purchase some of his best jewels ever appeared to the market.

Highlights from this section include a ravishing ruby and diamond Camellia flower brooch created in 2003 and estimated at

US\$1,200,000-1,500,000 (*illustrated left*); a delicate

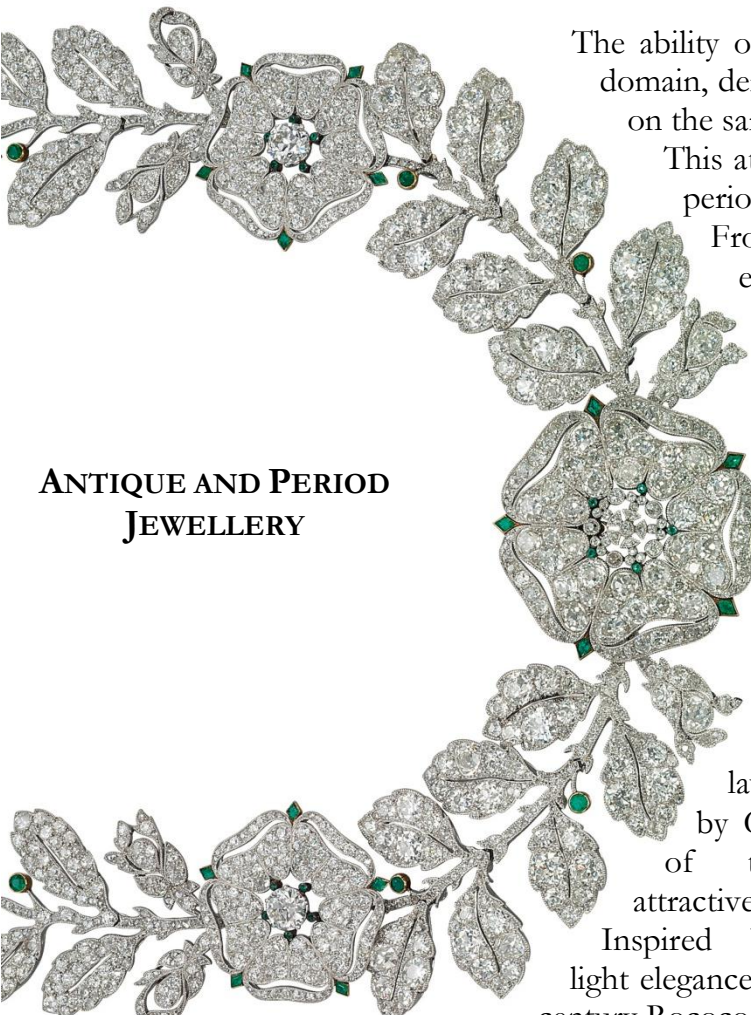
diamond and pink diamond Camellia flower bracelet created in 1994 (estimate: US\$400,000-600,000; *illustrated below right*)

and a sophisticated pair of sapphire, ruby and diamond Moghul tulip flower ear clips, dated 1987 (estimate: US\$250,000-500,000; *illustrated above left*).

Although these designs owe something to the history of jewellery design, they are entirely modern and unique; true originals tempered to the personality and the look of those for whom they were designed.







## ANTIQUE AND PERIOD JEWELLERY

The ability of Edmond and Lily Safra to select the very best in any domain, demonstrates that jewellery can be a genuine collecting field, on the same level as paintings and works of art.

This attitude is clearly illustrated by the outstanding selection of period jewellery.

From Antique to Belle Epoque and Art Deco, each and every piece stands out in terms of design, craftsmanship and quality of gems.

Perhaps the most important lot from the 19<sup>th</sup> century jewels from the collection, the exquisite Colombian emerald and diamond two row necklace illustrated below right is estimated at US\$1,200,000-1,800,000.

*Jewels For Hope* also showcases some superb examples of Belle Epoque jewellery, of which the 1911 diamond lavalier necklace

by Cartier is one of the most attractive pieces.

Inspired by the light elegance of 18<sup>th</sup> century Rococo jewels,

it is estimated at US\$400,000-600,000 (*illustrated on the following page*).

Another stunning example of Belle Epoque design is a diamond and emerald 'Eglantine' necklace formed as a wreath of diamond leaves and dog rose flowerheads with emerald details. Also created by Cartier in 1906 it is estimated at US\$600,000-800,000 (*illustrated left*).

Amongst the rarest pieces from this section of the sale is a set of antique diamond leaf brooches with a pair of ear clips. Probably originally designed as a corsage ornament, the lot will be offered with an estimate of US\$200,000-400,000 (*illustrated on the last page*).

Additional highlights include a supremely elegant Art Deco diamond and cabochon emerald sautoir created by Mauboussin, *circa* 1925 (estimate: US\$200,000-300,000, and a 1940s sapphire and diamond cuff by Suzanne Belperron which will be offered with an estimate of US\$80,000-120,000.



## MRS LILY SAFRA



Eric Megret ©

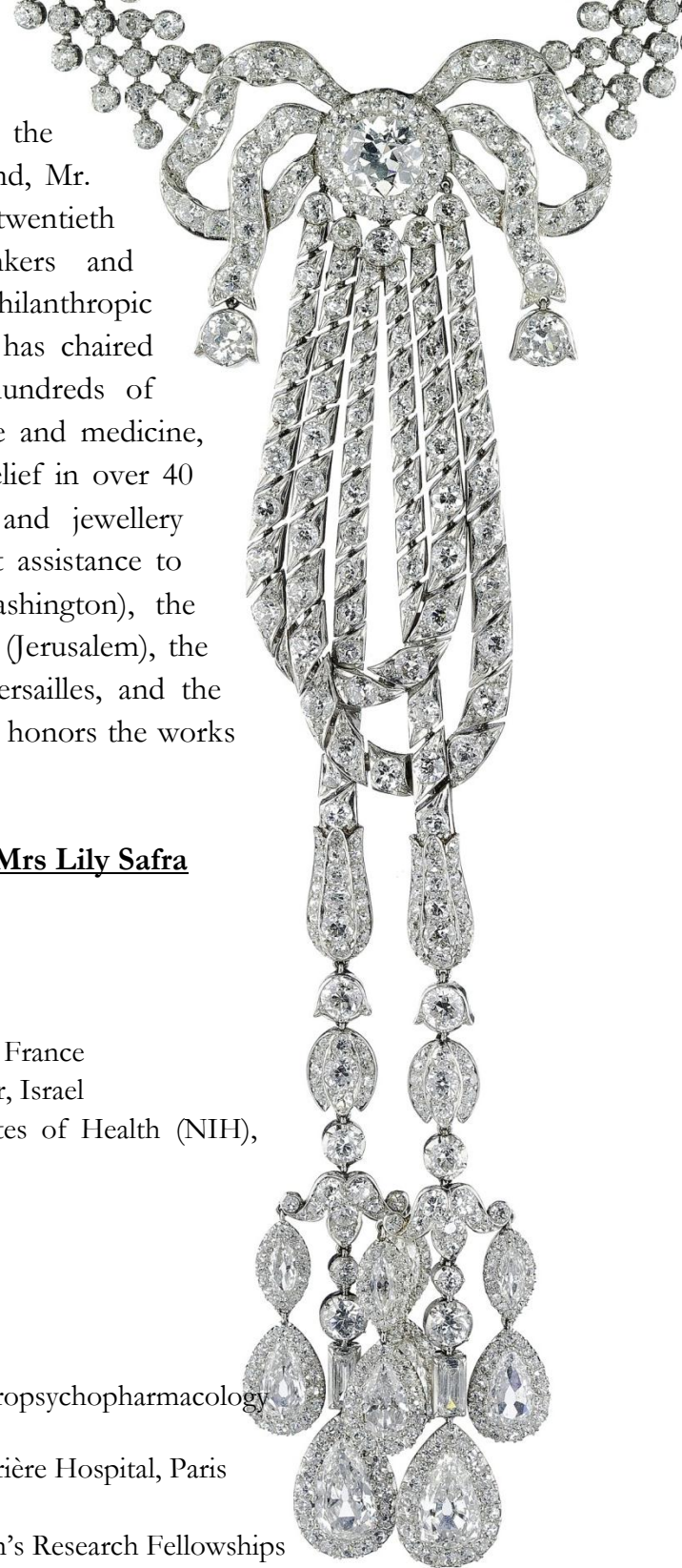
Mrs. Lily Safra has carried on the philanthropic tradition of her husband, Mr. Edmond J. Safra, one of the twentieth century's most accomplished bankers and founder of the Edmond J. Safra Philanthropic Foundation. Since 2000, Mrs. Safra has chaired this Foundation, which supports hundreds of projects related to education, science and medicine, religion, culture, and humanitarian relief in over 40

countries. She is a passionate art and jewellery collector, and has provided significant assistance to institutions including the National Gallery of Art (Washington), the Museum of Modern Art (New York), the Israel Museum (Jerusalem), the Courtauld Institute of Art (London), the Château de Versailles, and the Musée du Louvre, where the "Salle Edmond et Lily Safra" honors the works she and her husband donated.

### **All the proceeds from the sale of the collection of Mrs Lily Safra will benefit 20 charitable institutions\***

- Agahozo-Shalom Youth Village, Rwanda
- Children Action, Geneva, Switzerland
- Claude Pompidou Institute for Alzheimer's Disease, Nice, France
- Edmond and Lily Safra Children's Hospital, Tel Hashomer, Israel
- Edmond J. Safra Family Lodge at the National Institutes of Health (NIH), Bethesda, Maryland, USA
- Elton John AIDS Foundation (worldwide)
- Fight AIDS Monaco
- Henry Street Settlement, New York
- Hopes and Homes for Children, Romania
- Hôpitaux Universitaires de Genève
- Imperial College, London: Edmond J. Safra Chair in Neuropsychopharmacology & Edmond J. Safra Chair in Radiochemistry
- Institute for Brain and Spinal Cord Disorders, Pitié-Salpêtrière Hospital, Paris
- Keren Shemesh, Israel
- King's College, London: Edmond and Lily Safra Parkinson's Research Fellowships
- Le ballet de l'Opéra national de Paris
- New York University, Parkinson and Movement Disorders Center
- Royal Opera House, London
- Université Joseph Fourier, Institut des Neurosciences, Bâtiment Edmond J. Safra & Institut Clinatéc, Centre de Recherche Edmond J. Safra, Grenoble, France
- University of Toronto and Toronto Western Hospital, Canada: Edmond J. Safra Program in Parkinson's Disease (Dr. Anthony Lang & Dr. Andres Lozano)
- Water Treatment Program, Amélia Rodrigues (Bahia), Brazil

**\*Further information can be found in the attached document.**





# CHRISTIE'S

## JEWELS FOR HOPE : THE COLLECTION OF MRS LILY SAFRA

*Four Seasons Hotel des Bergues*  
*33 quai des Bergues, Geneva*

### Auction:

Monday 14 May 2012, at 8pm

### Viewings:

Friday 11 May      *2pm - 6pm*  
Saturday 12 May    *10am - 7pm*  
Sunday 13 May     *10am - 6pm*  
Monday 14 May     *10am - 6pm*



A set of twelve antique diamond  
leaf brooches and a pair of ear  
clips, mid-19<sup>th</sup> century  
Estimate: US\$200,000-400,000

### International Tour:

London	29-30 March
New York	14-17 April
Paris	19-20 April
Hong Kong	27-28 April

### About Christie's

Christie's, the world's leading art business, had global auction and private sales in 2011 that totaled £3.6 billion/\$5.7 billion. Christie's is a name and place that speaks of extraordinary art, unparalleled service and expertise, as well as international glamour. Founded in 1766 by James Christie, Christie's has since conducted the greatest and most celebrated auctions through the centuries providing a popular showcase for the unique and the beautiful. Christie's offers over 450 auctions annually in over 80 categories, including all areas of fine and decorative arts, jewellery, photographs, collectibles, wine, and more. Prices range from \$200 to over \$100 million. Christie's also has a long and successful history conducting private sales for its clients in all categories, with emphasis on Post-War and Contemporary, Impressionist and Modern, Old Masters and Jewellery. Private sales totaled £502 million / \$808.6m in 2011, an increase of 44% on the previous year. Christie's has a global presence with 53 offices in 32 countries and 10 salerooms around the world including in London, New York, Paris, Geneva, Milan, Amsterdam, Dubai, Zürich, and Hong Kong. More recently, Christie's has led the market with expanded initiatives in growth markets such as Russia, China, India and the United Arab Emirates, with successful sales and exhibitions in Beijing, Mumbai and Dubai.

*\*Estimates do not include buyer's premium. Sales totals are hammer price plus buyer's premium and do not reflect costs, financing fees or application of buyer's or seller's credits.*

# # #

Images available on request  
Visit Christie's Website at [www.christies.com](http://www.christies.com)