

CHRISTIE'S

PRESS RELEASE | NEW YORK | 4 JUNE 2013
FOR IMMEDIATE RELEASE

A TRIO OF RARE AND IMPORTANT PATEK PHILIPPE WRISTWATCHES LEAD CHRISTIE'S NEW YORK WATCHES SALE ON JUNE 11



Patek Philippe, Ref. 1518. A Fine and Rare 18k Gold Perpetual Calendar Chronograph Wristwatch with Moon Phases
Estimate: \$250,000 – 350,000



Patek Philippe, Ref. 5004. A Fine and Rare Platinum Perpetual Calendar Split-Seconds Chronograph Wristwatch with Moon Phases
Estimate: \$200,000 – 300,000



Patek Philippe, Ref. 2497. A Very Fine and Rare 18k Gold Perpetual Calendar Wristwatch with Moon Phases and Center Seconds
Estimate: \$150,000 – 250,000

Special sale highlight includes

THE STEPHEN S. PALMER PATEK PHILIPPE *GRAND COMPLICATION NO. 97912*

New York – Following a record breaking auction season in Hong Kong, which achieved US\$19.8 million in sales, while in Geneva a Rolex Ref. 4113 realized SFr. 1,107,750 (US\$1,160,922) set a new world record for any Rolex wristwatch – **Christie's New York** is pleased to announce highlights of its upcoming sale of *Important Watches* on June 11. This highly anticipated auction boasts over 360 lots of historical, rare and extremely alluring timepieces. The day-long auction, with public views beginning June 7, is expected to achieve in excess of US\$ 6 million.



As a special highlight of the sale, Christie's previously announced **The Stephen S. Palmer Patek Philippe Grand Complication No. 97912** (pictured at left; estimate: \$1,000,000 – 1,500,000). This Patek Philippe *Grand Complication 97912* is an 18k pink gold openface minute repeating perpetual calendar split-seconds chronograph clockwatch with grande and petite sonnerie, and moon phases, manufactured in 1898. Purchased October 3, 1900, for an impressive SFr. 6,500 by **Stephen S. Palmer**, the discovery of this *Grand Complication* is a

spectacular addition to scholarship surrounding Patek Philippe and *Grand Complications* in general. Never before seen in public, and for the first time ever on the auction block, *The Stephen S. Palmer Patek Philippe Grand Complication No. 9791* will be unveiled in Christie's Rockefeller Center saleroom marking an unprecedented occasion for collectors of the world's finest timepieces. [Please click here for the complete release.](#)

Additional highlights include exceptional offerings from **Patek Philippe**. Launched in 1952, the **Reference 2497** in 18K gold, is a perpetual calendar wristwatch with moon phases and center seconds, (pictured page one, right; estimate: \$150,000 – 250,000); the **Reference 5004** in platinum, is a perpetual calendar split-seconds chronograph wristwatch with moon phases and silvered dial (pictured page one, center; estimate: \$200,000 – 300,000); and the **Reference 1518** in 18K gold, is a perpetual calendar chronograph wristwatch with moon phases – the first perpetual calendar chronograph wristwatch to be manufactured in series by any firm in the world (pictured page one, left; estimate: \$250,000 – 350,000).

Douglas Escribano, Head of Sale, Watches commented: *"This has been an incredible season for watch collectors around the world making the upcoming auction in New York that much more exciting. This June, we are offering timepieces from 1680 to present times, with the Stephen S. Palmer Patek Philippe Grand Complication No. 97912 as our premiere lot. This spring, at Christie's New York, we are excited to present an exceptionally broad view of horology that is sure to entice collectors across a global level."*

TOP ROLEX REFERENCES

Christie's New York is delighted to present the extremely rare **Rolex Ref. 6542** (pictured at left; estimate: \$50,000 – 70,000). This 18k gold automatic dual time wristwatch with

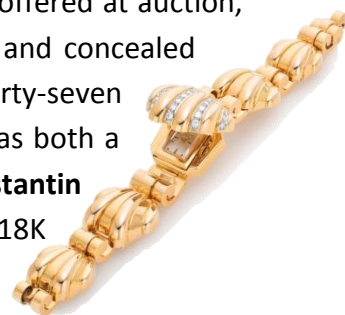
Bakelite Bezel, circa 1957, was launched in 1954 at the inception of transatlantic jet flights. In conjunction with Pan American Airlines, Rolex worked to create a timepiece with an additional hour hand for those suffering from a new phenomenon, jet lag. Consequently, this model was named GMT-Master after the world's standard time, Greenwich Mean Time.

The **Rolex Ref. 5036**, a fine and rare 18K pink gold triple calendar chronograph wristwatch (pictured at right; estimate: \$100,000 – 150,000)

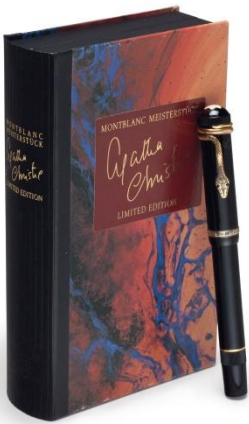
features a two-toned silvered dial with two apertures for day and month in French, circa 1949. The present reference 5036 is the rarest of this legendary group and part of the celebrated *Dato Compax* family, which also includes references 4767, 6036 and 6236. This highly sought after series of Rolex chronographs with the practical calendar indication feature is also nicknamed *Jean-Claude Killy* as the celebrated triple Olympic champion was known to wear a steel example from this series.

LADY'S WRISTWATCHES

The upcoming sale features a fabulous selection of lady's wristwatches. Never before offered at auction, the **Patek Philippe** lady's 18K gold and diamond set bracelet watch with shell motif and concealed dial, manufactured in 1949, (pictured at right; estimate: \$20,000 – 40,000) features forty-seven diamonds and reflects the creativity of Patek Philippe allowing the piece to be worn as both a functional watch and a piece of jewelry. Further highlights include a **Vacheron Constantin** 18K pink gold and gem-set bracelet watch (estimate: \$20,000 – 30,000) and an **Omega** 18K gold bracelet watch with concealed dial (estimate: \$6,000 – 8,000).



LIMITED EDITION PENS



As part of the *Important Watches* auction, Christie's is pleased to offer a beautiful array of fine and rare, limited edition pens. A particularly exciting example is the **Montblanc**, limited edition sterling silver and black resin fountain pen (pictured at left; estimate: \$2,000 – 3,000). This pen celebrates mystery author **Agatha Christie**, one of the most internationally renowned writers of the last twentieth century. The present example was modeled after a Montblanc fountain pen from 1920, the year in which Agatha Christie's first novel, *The Mysterious Affair at Styles*, was published. Furthermore, the **Omas** limited edition 18K gold and red resin fountain pen (pictured at right; estimate: \$3,000



– 5,000) is steeped in historical significance. The band around the cap alludes to the Great Wall of China and includes the Omas logo and four Chinese symbols for *Return to the Motherland*. The Omas *Return to the Motherland Pen* was made to commemorate the reunification of Hong Kong with China, and incorporates both Hong Kong and Chinese motifs.

ADDITIONAL HIGHLIGHTS INCLUDE



Patek Philippe Reference 1337

A Fine and Unique Gilt Brass Solar-Powered Desk Clock with Cloisonné Enamel
Manufactured in 1989

Estimate: \$100,000 – 150,000



Audemars Piguet

A Fine and Rare 18k White Gold Minute Repeating Tourbillon Wristwatch
Circa 2006

Estimate: \$100,000 – 150,000



Rolex Reference 6239

A Fine and Rare Stainless Steel Chronograph Wristwatch
Circa 1968

Estimate: \$50,000 – 70,000





Panerai

A Fine and Rare Limited Edition Oversized Stainless Steel Cushion-Shaped Diver's Wristwatch

Manufactured in 1995

Estimate: \$40,000 – 60,000

	<p>Audemars Piguet Model No. 036/500</p> <p>A Limited Edition PVD Coated Stainless Steel Automatic Chronograph Wristwatch with Date</p> <p>Circa 2000</p> <p>Estimate: \$20,000 – 30,000</p>
	<p>Patek Philippe</p> <p>A Lady's Fine Platinum and Diamond-Set Openface Keyless Lever Pendant Watch</p> <p>Manufactured in 1912</p> <p>Estimate: \$15,000 – 20,000</p>

*Note to Editors:

105 lots will be offered “without reserve.” Please contact Christie’s New York Watches department for more details.

PRESS CONTACT: Erin McAndrew | +1 212 636 2680 | emcandrew@christies.com
Gabriel Ford | +1 212 636 2680 | gford@christies.com

About Christie’s

Christie’s, the world's leading art business, had global auction and private sales in 2012 that totaled £3.92 billion/\$6.27 billion. Christie’s is a name and place that speaks of extraordinary art, unparalleled service and expertise, as well as international glamour. Founded in 1766 by James Christie, Christie’s has since conducted the greatest and most celebrated auctions through the centuries providing a popular showcase for the unique and the beautiful. Christie’s offers over 450 auctions annually in over 80 categories, including all areas of fine and decorative arts, jewellery, photographs, collectibles, wine, and more. Prices range from \$200 to over \$100 million. Christie’s also has a long and successful history conducting private sales for its clients in all categories, with emphasis on Post-War and Contemporary, Impressionist and Modern, Old Masters and Jewellery. Private sales totaled £631.3 million/\$1 billion in 2012, an increase of 26% on the same period last year.

Christie’s has a global presence with 53 offices in 32 countries and 10 salerooms around the world including in London, New York, Paris, Geneva, Milan, Amsterdam, Dubai, Zürich, and Hong Kong. More recently, Christie’s has led in growth markets such as Russia, China, India and the Middle East, with successful sales, exhibitions and initiatives in Moscow, Baku, Beijing, Mumbai, Delhi, Jeddah, Abu Dhabi, Doha and Dubai.

**Estimates do not include buyer’s premium. Sales totals are hammer price plus buyer’s premium and do not reflect costs, financing fees or application of buyer’s or seller’s credits.*

###

Images available on request

Visit Christie’s Website at www.christies.com

Complete catalogue available online at www.christies.com or via the Christie’s iPhone app

FOLLOW CHRISTIE’S ON:

