

CHINESE CERAMICS & WORKS OF ART AUCTIONS

MARKET REPORT | AUTUMN 2022 | HONG KONG



CHRISTIE'S

OUTSTANDING RESULTS FOR CHINESE CERAMICS AND WORKS OF ART DEMONSTRATE MARKET STRENGTH

On 29 November 2022, during Christie's Autumn Auctions, three Chinese Ceramics and Works of Art live auctions were held: *The Chang Wei-Hwa Collection of Archaic Jades Part IV*, *Rich Golden Hues and Graceful Forms – Classical Chinese Furniture From The Tseng Collection*, and *Important Chinese Ceramics and Works of Art*. In addition, an online sale for the category, titled *Pavilion Online - Chinese Art* took place from 22 November to 6 December 2022. The sale series garnered remarkable results, achieving a combined sale total of HK\$484 million, demonstrating the continued strength of the market for Chinese ceramics and works of art, and the strong appeal of prestigious single-owner collections with outstanding provenance.

Combined Sale Total

HK\$ **484** MILLION

(US\$63 million)



THE CHANG WEI-HWA COLLECTION OF ARCHAIC JADES PART IV – THE QIN AND HAN PERIODS SALE SUMMARY

Following three highly successful sales of archaic jades from the Chang Wei-Hwa collection, Christie's was honoured to present part IV: *The Chang Wei-Hwa Collection of Archaic Jades: The Qin and Han Periods*. This dedicated standalone live auction comprised 73 lots spanning from dynasties from Qin to Han. It was **100% sold** and achieved a remarkable **205% hammer above low estimate**, attesting to the desirability of rare and important archaic jades.

CHRISTIE'S 佳士得
Hong Kong

100%
SOLD



Sale Total for Part IV

HK\$ **73** MILLION

(US\$9.4 million)

205%

Hammer Above Low Estimate

The Chang Wei-Hwa Collection of Archaic Jades Parts I-IV

Combined Sale Total

HK\$ **265** MILLION

(US\$34 million)

255%

Hammer Above Low Estimate

LOT 248	PRICE
HKD	22,000,000
USD	2,826,758
GBP	2,343,907
JPY	390,051,200
EUR	2,719,036
CNY	20,145,950
SGD	3,872,132
TWD	
IDR	
KRW	

THE CHANG WEI-HWA COLLECTION OF ARCHAIC JADES

PART IV – THE QIN AND HAN PERIODS

SALE HIGHLIGHTS



**AN EXCEEDINGLY RARE AND EXCEPTIONAL
JADE CARVING OF A MYTHICAL BEAST, *BIXIE***
LATE WESTERN HAN DYNASTY
C. 1ST CENTURY BC

Estimate: HK\$8,000,000 – 12,000,000
Price realised: HK\$26,850,000
(US\$3,449,938)

TOP LOT OF THE SALE

SOLD FOR 336% OF LOW ESTIMATE



**A VERY RARE JADE CARVING OF AN 'EAGLE AND
BEAR' GROUP**
WESTERN HAN DYNASTY
(206 BC - AD 8)

Estimate: HK\$300,000 – 500,000
Price realised: HK\$3,276,000
(US\$420,931)

SOLD FOR 1,092% OF LOW ESTIMATE



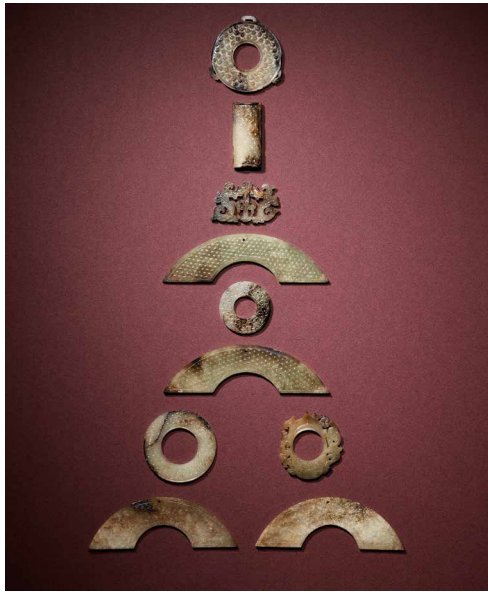
**A LARGE WHITE JADE RETICULATED
'PHOENIX' PLAQUE**
LATE WESTERN HAN DYNASTY
C. 1ST CENTURY BC

Estimate: HK\$2,200,000 – 3,500,000
Price realised: HK\$3,024,000
(US\$388,552)

THE CHANG WEI-HWA COLLECTION OF ARCHAIC JADES

PART IV – THE QIN AND HAN PERIODS

SALE HIGHLIGHTS



A SET OF TEN JADE PENDANTS
WESTERN HAN DYNASTY
(206 BC - AD 8)

Estimate: HK\$600,000 - 800,000
Price realised: HK\$2,772,000
(US\$356,172)

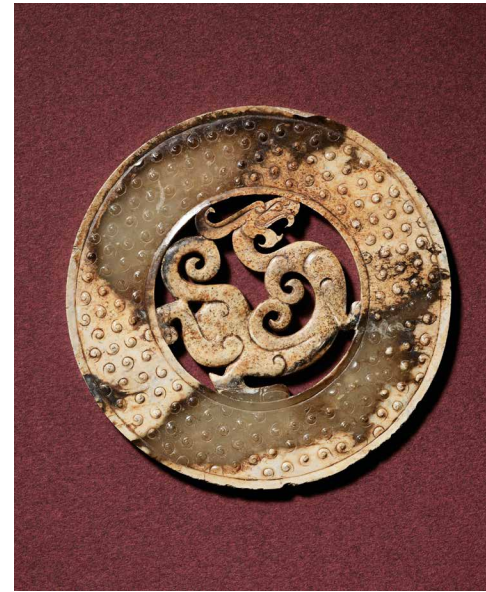
SOLD FOR 462% OF LOW ESTIMATE



A JADE DRAGON-FORM PENDANT
WESTERN HAN DYNASTY
(206 BC - AD 8)

Estimate: HK\$800,000 - 1,200,000
Price realised: HK\$2,520,000
(US\$323,793)

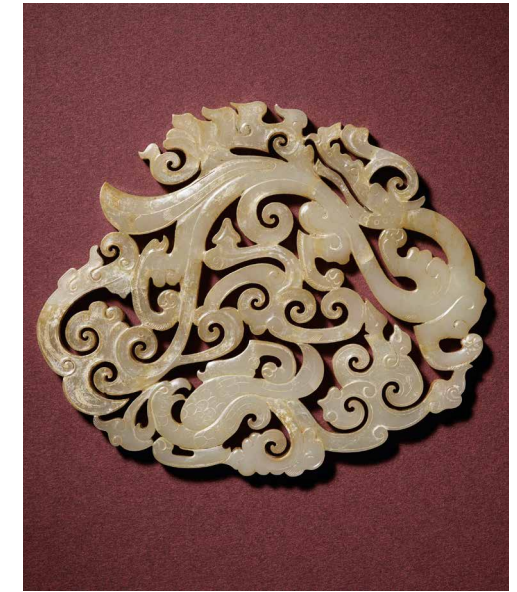
SOLD FOR 315% OF LOW ESTIMATE



A JADE RETICULATED 'DRAGON' DISC, B/
WESTERN HAN DYNASTY
(206 BC - AD 8)

Estimate: HK\$300,000 - 500,000
Price realised: HK\$2,016,000
(US\$259,034)

SOLD FOR 672% OF LOW ESTIMATE



A LARGE WHITE JADE RETICULATED
'DRAGON AND PHOENIX' PLAQUE
EASTERN HAN DYNASTY
(AD 25 - 220)

Estimate: HK\$280,000 - 400,000
Price realised: HK\$1,764,000
(US\$226,655)

SOLD FOR 630% OF LOW ESTIMATE

CLASSICAL CHINESE FURNITURE FROM THE TSENG COLLECTION SALE SUMMARY

Sale Total

HK\$ **227** MILLION

(US\$29 million)

442%

Hammer Above Low Estimate

CHRISTIE'S
RICH GOLDEN HUES AND GRACEFUL FORMS
CLASSICAL CHINESE FURNITURE FROM THE TSENG COLLECTION

100%
SOLD

94%

of buyers from
Greater China region

Classical Chinese furniture continues to be highly coveted and in demand among collectors of Chinese art. In November 2022, Christie's Hong Kong held a dedicated, single-owner sale, *Rich Golden Hues and Graceful Forms - Classical Chinese Furniture From The Tseng Collection*, which was **100% sold and achieved an outstanding 442% hammer over low estimate**, demonstrating Hong Kong's strength and allure as a top collecting hub for Chinese art, and **Christie's continued leadership in offering classical Chinese furniture** at auction. Having **sold more classical Chinese furniture collections than our competitors** throughout our history, **Christie's is the preferred destination for collectors of the category.**

CLASSICAL CHINESE FURNITURE FROM THE TSENG COLLECTION SALE HIGHLIGHTS



TOP LOT OF THE SALE

A MAGNIFICENT
HUANGHUALI CIRCULAR
INCENSE STAND, *XIANGJI*
17TH CENTURY

Estimate:
HK\$6,000,000 - 10,000,000
Price realised: HK\$71,327,500
(US\$9,164,820)

**WORLD AUCTION
RECORD FOR AN
INCENSE STAND**

**SOLD FOR 1,188% OF
LOW ESTIMATE**

CLASSICAL CHINESE FURNITURE FROM THE TSENG COLLECTION SALE HIGHLIGHTS



A VERY RARE PAIR OF INLAID
HUANGHUALI 'SOUTHERN
OFFICIAL'S HAT' ARMCHAIRS,
NANGUANMAOYI
MING DYNASTY,
16TH - 17TH CENTURY

Estimate: HK\$2,000,000 - 3,000,000
Price realised: HK\$17,250,000
(US\$2,216,440)

**SOLD FOR 863% OF
LOW ESTIMATE**

A VERY RARE *HUANGHUALI* RECTANGULAR
INCENSE STAND WITH SERPENTINE PANEL
AND DRAWER, *XIANGJI*
17TH CENTURY

Estimate: HK\$3,500,000 - 5,500,000
Price realised: HK\$24,450,000
(US\$3,141,563)

SOLD FOR 700% OF LOW ESTIMATE

CLASSICAL CHINESE FURNITURE FROM THE TSENG COLLECTION SALE HIGHLIGHTS



A MAGNIFICENT LARGE *HUANGHUALI*
RECESSED TRESTLE-LEG TABLE,
QIAOTOU'AN
17TH CENTURY

Estimate: HK\$8,000,000 - 12,000,000
Price realised: **HK\$34,050,000**
(US\$4,375,060)

SOLD FOR 426% OF LOW ESTIMATE



A VERY RARE AND LARGE STONE-INSET
HUANGHUALI YOKEBACK ARMCHAIR,
SICHUTOU GUANMAOYI
MING DYNASTY, 16TH - 17TH CENTURY

Estimate: HK\$2,400,000 - 3,500,000
Price realised: **HK\$11,250,000**
(US\$1,445,505)

SOLD FOR 469% OF LOW ESTIMATE



A LARGE *HUANGHUALI* TAPERED
SLOPING STYLE CABINET, *YUANJIAOGUI*
17TH CENTURY

Estimate: HK\$1,000,000 - 1,500,000
Price realised: **HK\$7,560,000**
(US\$971,379)

SOLD FOR 756% OF LOW ESTIMATE

CLASSICAL CHINESE FURNITURE FROM THE TSENG COLLECTION SALE HIGHLIGHTS



AN IMPORTANT AND RARE *HUANGHUALI* TOWEL RACK AND WASH BASIN STAND, *MIANPENJIA*
MING DYNASTY, 16TH - 17TH CENTURY

Estimate: HK\$2,000,000 - 3,000,000
Price realised: HK\$9,450,000
(US\$1,214,224)

SOLD FOR 473% OF LOW ESTIMATE

**WORLD AUCTION RECORD FOR A
WASH BASIN STAND**



AN IMPORTANT AND EXTREMELY RARE THREE-LEGGED *HUANGHUALI* LAMPSTAND, *SANZUDENGTAI*
MING DYNASTY, EARLY 17TH CENTURY

Estimate: HK\$1,500,000 - 2,500,000
Price realised: HK\$8,568,000
(US\$1,100,896)

SOLD FOR 571% OF LOW ESTIMATE

**WORLD AUCTION RECORD FOR A SINGLE
HUANGHUALI LAMPSTAND**



A VERY RARE *HUANGHUALI* 'CABRIOLE-LEG' DAYBED, *TA*
MING DYNASTY, 16TH - 17TH CENTURY

Estimate: HK\$1,500,000 - 2,500,000
Price realised: HK\$6,300,000
(US\$809,483)

SOLD FOR 420% OF LOW ESTIMATE

IMPORTANT CHINESE CERAMICS AND WORKS OF ART SALE SUMMARY

In the *Important Chinese Ceramics and Works of Art* auction, Christie's presented an array of exceptional pieces from private collections across the globe, all with notable provenance. The sale achieved a robust total of **HK\$183 million** with numerous outstanding prices realised. Christie's was honoured to present **Important 17th Century Porcelain from the Butler Family Collection**, which was **100% sold**.

Sale Total

HK\$ **183** MILLION

(US\$23 million)

2994

- 68,000,000
- 8,737,252
- 7,244,788
- 1,205,612,800
- 8,403,984
- 62,269,300
- 11,968,408
- 268,232,732
- 136,023,596,000
- 11,595,387,200

A FINE MAGNIFICENT CARVED 'DRAGON' CELADON-GLAZED MEIPING QIANLONG SIX-CHARACTER SEAL MARK IN UNDERGLAZE BLUE AND OF THE PERIOD (1736 - 1795)

Estimate: HK\$50,000,000 - 80,000,000
Price realised: HK\$81,060,000 (US\$10,415,343)

TOP LOT OF THE SALE



CHRISTIE'S

Important 17th Century Porcelain from the Butler Family Collection

100% SOLD

IMPORTANT CHINESE CERAMICS AND WORKS OF ART SALE HIGHLIGHTS



A VERY RARE PAIR OF DOUCAI WATER POTS
YONGZHENG SIX-CHARACTER MARKS IN
UNDERGLAZE BLUE WITHIN DOUBLE CIRCLES
AND OF THE PERIOD (1723 - 1735)

Estimate: HK\$12,000,000 - 15,000,000
Price realised: HK\$11,250,000
(US\$1,445,505)



A RARE RU-TYPE GLAZED OVAL JARDINIÈRE
QIANLONG FOUR-CHARACTER SEAL MARK
IN UNDERGLAZE BLUE AND OF THE PERIOD
(1736 - 1795)

Estimate: HK\$800,000 - 1,200,000
Price realised: HK\$5,670,000
(US\$728,534)

SOLD FOR 709% OF LOW ESTIMATE



**A VERY RARE EARLY-MING GILT-BRONZE
STANDING FIGURE OF MAITREYA**
YONGLE INCISED SIX-CHARACTER MARK
AND OF THE PERIOD (1403 - 1425)

Estimate: HK\$3,500,000 - 5,000,000
Price realised: HK\$5,040,000
(US\$647,586)

IMPORTANT 17TH CENTURY PORCELAIN FROM THE BUTLER FAMILY COLLECTION COLLECTION HIGHLIGHTS



A RARE COPPER-RED-DECORATED 'DRAGON' VASE
KANGXI PERIOD (1662 - 1722)

Estimate: HK\$800,000 - 1,200,000
Price realised: HK\$6,048,000
(US\$777,103)

SOLD FOR 756% OF LOW ESTIMATE



**A RARE LARGE UNDERGLAZE-BLUE AND COPPER-RED-
DECORATED 'MASTER OF THE ROCKS' DISH**
KANGXI PERIOD (1662 - 1722)

Estimate: HK\$150,000 - 200,000
Price realised: HK\$2,394,000
(US\$307,603)

SOLD FOR 1,596% OF LOW ESTIMATE

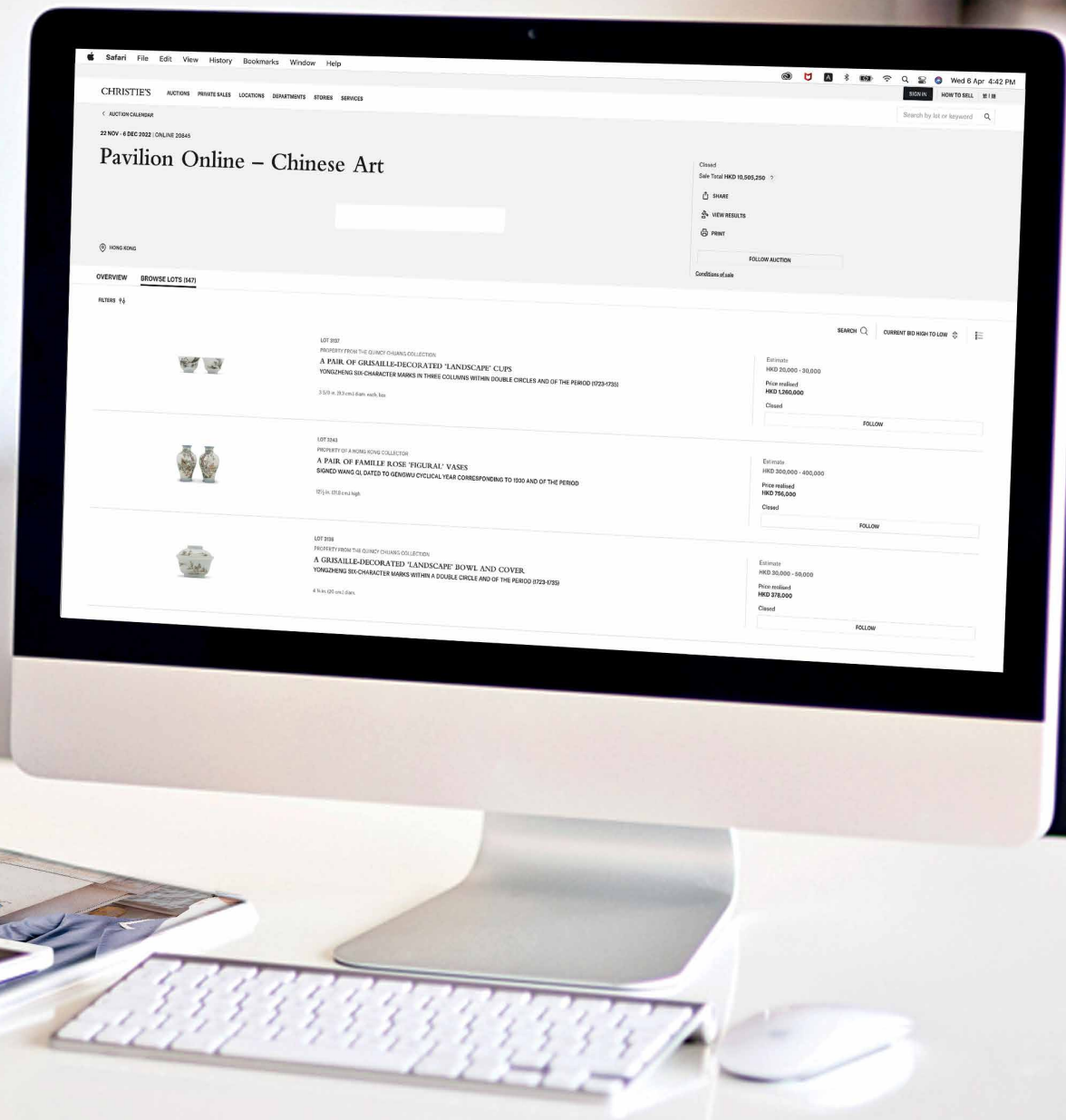


A LARGE BLUE AND WHITE SLEEVE VASE
SHUNZHI PERIOD (1644 - 1661)

Estimate: HK\$400,000 - 600,000
Price realised: HK\$1,512,000
(US\$194,276)

SOLD FOR 378% OF LOW ESTIMATE

PAVILION ONLINE - CHINESE ART SALE SUMMARY



Sale Total

HK\$ **10.5** MILLION

(US\$1.4 million)

TOP LOT OF THE SALE



A PAIR OF GRISAILLE-DECORATED 'LANDSCAPE' CUPS
YONGZHENG SIX-CHARACTER MARKS IN THREE
COLUMNS WITHIN DOUBLE CIRCLES AND OF THE
PERIOD (1723 - 1735)

Price realised: HK\$1,260,000 (US\$162,074)

STRONG GLOBAL INTEREST AND PARTICIPATION

CHRISTIE'S 佳士得
Hong Kong

COMPETITIVE BIDDING
BY COLLECTORS FROM

13 countries

ACROSS

4 continents



CHRISTIE'S CHINESE CERAMICS AND WORKS OF ART TEAM

ASIA REGIONAL CONTACTS

GLOBAL MANAGING DIRECTOR

HEIDI YANG
+852 2978 6804
heidiyang@christies.com

REGIONAL MANAGING DIRECTOR

NICOLE WRIGHT
+852 2978 9952
nwright@christies.com

HEAD OF SALE MANAGEMENT

SAMANTHA YUEN
+852 2978 6703
syuen@christies.com

SALE COORDINATORS

YVONNE JIANG
+852 2978 9955
yvonnejiang@christies.com

JOEY ZHOU
+852 2978 6810
joeyzhou@christies.com

CALISTA CHEUNG
+852 2978 6734
calistacheung@christies.com

SPECIALISTS



POLA ANTEBI
Hong Kong



CHI FAN TSANG
Hong Kong



MARCO ALMEIDA
Hong Kong



LIANG-LIN CHEN
Hong Kong



TIMOTHY LAI
Hong Kong



AUDREY LEE
Hong Kong



YUNHAN SUN
Hong Kong



SHERESE TONG
Shanghai



DAI DAI
Beijing



FELIX PEI
Beijing



RUBEN LIEN
Taipei



KELLY CHANG
Taipei



MASAHIKO KUZE
Tokyo



SEIJI INAMI
Tokyo

ASIA PACIFIC REGIONAL MANAGEMENT



FRANCIS BELIN



HEIDI YANG



JONATHAN STONE



NICOLE WRIGHT



REBECCA YANG



ADA ONG



KATSURA
YAMAGACHI



HAK JUN LEE



PRAPAVADEE
SOPHONPANICH



CHARMIE HAMAMI

