

**For Immediate Release**

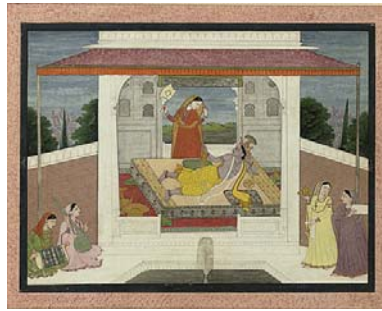
15 February 2008

Contact: Sara Fox      212 636 2680      sfox@christies.com

**THE SCHOLAR'S VISION OF DR. PRATAPADITYA PAL HEADS  
CHRISTIE'S INDIAN AND SOUTHEAST ASIAN ART SALE**



*A Vaishnavite Follower*  
India, Jaipur  
18th C  
estimate: \$8,000-12,000



*An Illustration to the Bhagavata Purana:  
Krishna Beckons Radha to Join Him*  
India, Kangra, early 19th C  
estimate: \$20,000-30,000



*A Peacock hunter with his lady  
on a rainy evening*  
India, Hindur, mid-19th C  
estimate: \$15,000-20,000

**The Scholar's Vision: The Pal Family Collection ~ 20 March 2008  
Indian and Southeast Asian Art ~ 21 March 2008**

**New York** — On March 20 and 21, Christie's will present an unprecedented series of sales this Asia Week of Indian, Himalayan, and Southeast Asian Arts. A single owner collection entitled *The Scholar's Vision: The Pal Family Collection* from Dr. Pratapaditya Pal, curator emeritus and scholar extraordinaire of the field will be held on March 20. The following day will feature eight lots in the *Masterpieces of Southeast Asian Art* sale (separate release available), continued by *Indian and Southeast Asia Art*. With over 520 lots, the combined sales expect to realize in excess of \$12 million dollars.

**THE SCHOLAR'S VISION: THE PAL FAMILY COLLECTION**

Dr. Pratapaditya Pal's collection spans nearly 2000 years of art from Indian schools, including, Abindranath Tagore, Francis Newton Souza, and Raja Ravi Varma to foreign perspectives such as Hiroshi Yoshida. There are rare and unusual sculptures in bronze and stone, including folk and village arts, as well as the arts of Bengal and Calcutta, his native state and country. Reflecting his vision and mind, driven by idiosyncratic preference and

consideration of areas that fell outside of the scope of the museum's interest, it offers many new and unique perspectives on Indian art.

Dr. Pal's pioneering research and seminal publications include catalogues of the collections at the Los Angeles County Museum of Art, which he joined as a curator in 1970, the Norton Simon Museum and the Art Institute of Chicago, monographs of numerous private collections, as well as countless exhibitions. The impact his publications have had in furthering the interest and understanding of the arts of greater India worldwide cannot be overstated.

Miniature works include a colored drawing of a Vaishnavite Devotee is attributed to Sahib Ram, from Jaipur, 18th century (estimate: \$12,000-18,000). The face of the devotee is sensitively drawn with large lotus-shaped eyes, and the hair is bound into a topknot and secured with golden jewelry. The fluidly and boldly executed drawing displays all the traits of the hand of Sahib Ram.

A painting of a *Peacock Hunter with his Lady on a Rainy Evening India*, from the mid-19th century, is most likely an illustration from a Ragamala (estimate: \$15,000-20,000). The hunter wears clothes made from peacock feathers, with a bird around his neck and aims his bow at another, the woman dressed in pink and gold carrying another bird, the gray skies with rain-filled clouds and golden ribbons of thunder. An early 19<sup>th</sup> century illustration from the *Bhagavata Purana: Krishna Beckons Radha to Join Him*, depicts Krishna laying on a low bed in a pavilion, pulling on Radha's *odhni*, with ladies playing instruments and standing in attendance (estimate: \$20,000-30,000).

A sensitively drawn watercolor by Abanindranath Tagore, *At the Ganges*, shows a woman in traditional dress carrying a paper boat with two *diyas*, descending down the *ghat* to make her offering at the Ganges (estimate: \$15,000-20,000). The piece has been inscribed by the artist, "To my Beloved Pupil Roop Krishna, Abanindranath Tagore, 15<sup>th</sup> Jan 1921."

Sculpture highlights in the collection feature a rare green figure of Vishnu from Kashmir (8<sup>th</sup> century) (estimate: \$40,000-60,000). A superb example of its type, it is expressively carved in the round, holding a conch and a lotus flowerhead, blending purity of form with intricate detail.

## INDIAN AND SOUTHEAST ASIAN ART



A gray schist figure of Buddha  
Gandhara, 2nd/3rd century  
estimate: \$250,000-350,000



Gilt bronze figure of Avalokiteshvara  
Tibet, 13th century  
estimate: \$1,000,000-1,500,000



An Imperial Thangka of the Fifth  
Karmapa and the Yongle Emperor  
Tibeto-Chinese, 1407  
estimate: \$100,000-150,000

The Indian and Southeast Asian sale features paintings, textiles and sculpture from an expansive geographical range that extends from Afghanistan to Indonesia, and from the Himalayas to Sri Lanka. Many of these objects emerge from Buddhist, Hindu and Jain contexts.

The highlight of the sale is a superbly cast gilt bronze figure of Avalokiteshvara seated in *lalitasana*, with his right leg pendent and his hands in *varadha* and *vitarka mudra* (estimate: \$1,000,000-1,500,000). The exceptional level of execution implies it was a high level commission and it employs several unique features; the drapery and jewelry is influenced by Chinese idioms, yet the chignon directly recalls Pala Indian style.

An important Gandharan gray schist figure of Maitreya holds a bottle containing the elixir of immortality and displays complex and intricate carving of the drapery (estimate: \$150,000-250,000). The figure contains a highly rare feature of the Buddhist creed inscribed in the halo. Vasudhara, the goddess of wealth, good fortune and fertility, is presented in a gilt copper figure, and is an exceptionally fine example of its type, with elegant fluid lines and sensuous modeling and delicate ornamentation (estimate: \$100,000-150,000). A sandstone figure of a hero, likely one of the Pandava brothers, the heroes of *Mahabharata* is of monumental size (11-14<sup>th</sup> century) (estimate: \$350,000-500,000).

A highlight amongst the paintings available is a rare Thangka of the fifth Karmapa, Deshin Shegpa, meeting Emperor Yongle (estimate: \$100,000-150,000). Finely painted, especially in

the treatment of the landscape, the painting is noteworthy because Karmapa is depicted in larger scale than the Emperor.

**Auction:**

*The Scholar's Vision: The Pal Family Collection*  
*Indian and Southeast Asian Art*

20 March at 2pm  
21 March at 10:30am

**Viewing:** Christie's, 20 Rockefeller Plaza, NY

14 – 20 March

**Note:** \$ denotes U.S. dollars

**About Christie's**

Christie's is the world's leading art business with global auction sales in 2007 that totaled £3.1 billion/\$6.3 billion. This marks the highest total in company and in art auction history. Christie's is a name and place that speaks of extraordinary art, unparalleled service and expertise, as well as international glamour. Founded in 1766 by James Christie, Christie's conducted the greatest auctions of the 18th, 19th and 20th centuries, and today remains a popular showcase for the unique and the beautiful. Christie's offers over 600 sales annually in over 80 categories, including all areas of fine and decorative arts, jewellery, photographs, collectibles, wine, and more. Prices range from \$200 to over \$80 million. Christie's has 85 offices in 43 countries and 14 salerooms around the world including in London, New York, Los Angeles, Paris, Geneva, Milan, Amsterdam, Tel Aviv, Dubai and Hong Kong. Most recently, Christie's has led the market with expanded initiatives in emerging and new markets such as Russia, China, India and the United Arab Emirates, with successful sales and exhibitions in Beijing, Mumbai and Dubai.

\*Estimates do not include buyer's premium

# # #

*Images available on request*

*Visit Christie's Web site at [www.christies.com](http://www.christies.com)*