

For Immediate Release

Monday, 22 October 2007

Contact: Hannah Schmidt

+44 (0) 207 389 2964

hschmidt@christies.com

ASIAN ART WEEK AT CHRISTIE'S LONDON IN NOVEMBER 2007

London – Building on the success of *Asia Week* New York in September which totaled \$44.4 million, Christie's London are pleased to announce a diverse array of oriental treasures offered over five days of sales: ***Japanese Art and Design including The Robert Moore Collection*** on Monday 5 November; ***Fine Chinese works of Art including Export Art*** on Tuesday 6 November, ***Japanese Prints including the B.W. Robinson Collection of Kuniyoshi Prints*** on Wednesday 7 November, ***Japanese Ceramics and Works of Art*** on Thursday 8 November and ***Chinese Ceramics and Works of Art*** on Friday 9 November 2007.

The Robert Moore Collection of Japanese Art and Design: Monday 5 November 2007 at 10.30am



Opening the November series of Asian Art sales in London, *The Robert Moore Collection of Japanese Art and Design* will offer over 120 lots which exemplify the unique quality of Japanese culture from Yayoi Period to Taisho Period [1st century AD-20th century]. Beautiful objects from daily domestic life include a *Nabeshima dish*, Edo Period [late 17th century] (estimate: £10,000-15,000) (*illustrated right*), a *Kakiemon model of a karashishi*, Edo Period (estimate: £20,000-30,000), a *set of ten dishes*, by Ogata Kenzan [1633-1743] (estimate: £20,000-30,000) and a *Ko-Imari bottle vase*, Edo Period (estimate: £10,000-15,000). This collection provides a fascinating insight into the objects in this unique culture which became largely obsolete during the Westernization of Japan in the Meiji Period [1868 -1912].

Japanese Art and Design: Monday 5 November 2007 at 11.45 and 2.30pm

Following the Robert Moore Collection the inspiring array of *Japanese Art and Design* will continue throughout Monday 5 November 2007. Spanning the 14th to the 20th century and featuring over 200 lots of lacquer, netsuke, swords, ceramics, bronzes and other works of art, this first day of sales is expected to realise a total in excess of £1 million. The star lot is an elegant 'Aesthetic Movement' cabinet which is mounted with exquisite Japanese lacquer panels dating from the Momoyama Period [16th century], attributed to Thomas Jeckyll [1827-1881] (estimate: £200,000-300,000) (*illustrated right*). **Ceramic** highlights include a rare and impressive *Ko-Kutani Dish*, Edo Period [late 17th century] (estimate: £150,000-200,000) and a pair of rare *Imari Figures*, Edo Period, (estimate: £20,000-30,000). Elsewhere in the sale exceptional lots include superb **swords** which are led by a *Bizen Tashi*, Kamakura Period



[13th and 14th century] (estimate: £80,000-100,000) and a *Bizen Katana*, Nanbokuchō Period [14th century] (estimate: £50,000-60,000). Two objects with an Imperial provenance are a *Bizen Katana*, Kamakura Period [early 13th century] (estimate: £30,000-40,000) and a *Formal Uniform*, Meiji Period [late 19th century] (estimate: £10,000-15,000).

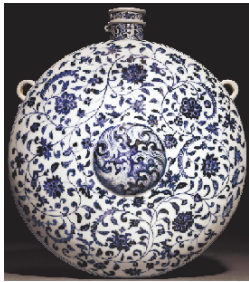
Fine Chinese Ceramics and Works of Art including Export Art: Tuesday 6 November 2007 at 10.30am

Christie's second day of Asian sales continues with *Fine Chinese Ceramics and Works of Art including Export Art* on Thursday 6 December 2007. Over 240 lots will be offered including stunning sculptures, bronzes, ceramics, furniture and paintings which are estimated to realise in excess of £2million.



Leading the exquisite selection of **ceramics** is a rare *pair of black-ground green-enamelled dishes*, Yongzheng Period [1723-35] (estimate: £100,000-150,000) which are enigmatically alluring (*illustrated above right*).

The painting and composition on this pair of dishes appear to be unique and are amongst some of the finest on Chinese porcelain. Another highlight in the sale is a very rare early *Ming blue and white flask*, Yongle Period [1403-25] (estimate: £150,000-200,000) (*illustrated left*).



This flask is the only example of its type that has ever appeared on the market, the other known examples are all held in the Palace Museum in Beijing or Taipei. Other notable blue and white pieces include a fine *decagonal bowl* [1622-1722], with circular medallions containing an Imperial dragon in each panel (estimate: £25,000-30,000) and a stunningly simple *Meiping vase* (estimate: £20,000-30,000) which is decorated with six elegant fruit and flower sprays.

In the **Export Art** section is a very rare pair of *armorial famille rose jars* and covers, Qianlong [1736-95] (estimate: £50,000-80,000). Made for the Spanish Augustinian convent in the Philippines, these jars are the only known pair to have been made and were probably originally destined for the Philippines. Another rare lot is a charming pair of early *models of hounds*, first half of 18th century (estimate: £10,000-15,000), which pre-dates the more common models from the Qianlong Period and are likely to be eagerly contested amongst the collectors of these increasingly popular porcelain animal figures.



Amongst the array of **Chinese works of Art** highlights is a stunning *pair of Imperial double-gourd shaped inlaid plaques* (estimate: £60,000-80,000) (*illustrated left*). Various inlaid with hardstones, gilt bronze, enamels, wood, ivory and mother-of-pearl, these panels are accentuated by a striking yellow lacquer ground, the colour for the Imperial court. The sale also includes a collection of finely carved jade pieces from a private Swiss collection, featuring, amongst others, a very rare *white jade 'dragon' vase* (estimate: £50,000-70,000), masterfully carved with a sinuous dragon trailing down the front of the otherwise undecorated vase. Further attractions include a very rare *bronze model of a rhinoceros*, Tang Dynasty [618-907 AD] (estimate: £60,000-80,000); an extraordinary *carved rhinoceros horn libation cup*

portraying a scholar contemplating the moon, 17th century (estimate: £35,000-45,000) and an *Imperial cloisonné enamel 'deer' vase* (estimate; £15,000-25,000) from the Qianlong Period. This vase was reputedly taken during the Boxer Rebellion of 1860 from the Summer Palace, Yuanmingyuan, and was gifted to the Macintosh of Macintosh by Major General Lumley Holland, since when it has remained in Moy Hall, Inverness.

The Dynamic World of Utagawa Kuniyoshi -The B.W.Robinson Collection: Wednesday 7 November 2007 at 10.30am Bid via Christie's LIVE™



Christie's are proud to present Japanese prints from the world-famous *B.W. Robinson Collection* which will provide a charismatic start to the third and final day of sales in Asian Art Week at Christie's London on Wednesday 7 November 2007. This collection showcases over 150 lots comprising 3,000 prints by 19th century artist Utagawa Kuniyoshi, including many major designs which have not been offered at auction for many years. Compiled with the passionate zeal and academic knowledge of one man, Basil Robinson (1912-2005), these prints focus on the exploits of warriors and mythological heroes and also reveal the

collector and the artist's shared fondness of cats including the adorable top lot *Cats Suggested by the Fifty-three Stations of the Tokaido* (estimate: £20,000-30,000) (illustrated above left).

Further highlights include Kuniyoshi's breathtakingly dynamic *Onivakamaru and the Giant Red Carp* (estimate: £10,000-15,000), *Mongaku Shonin under the Nachi Waterfall* (estimate: £7,000-10,000), his enigmatic *Sixty-nine Stations Along the Tokaido* (estimate: £7,000-10,000), remarkable *In the Ruined Palace at Soma* (estimate: £6,000-8,000) (illustrated right) and his evocative *Local Products from the Mountains and the Sea* (estimate: £5,000-8,000).



B.W. Robinson is largely attributed to pioneering the study and appreciation of Kuniyoshi, the artistic merits of whom had gone largely unobserved, both in Japan and abroad. Robinson's enthusiasm and scholarship has led his name to be synonymous with Kuniyoshi, having produced the first English work on this great artist *Kuniyoshi* in 1961 and later *Kuniyoshi: The Warrior Prints* in 1982, which is the standard reference work for all scholars and collectors.

Japanese Prints: Wednesday 7 November 2007 at 11.45am and 2.30pm Bid via Christie's LIVE™



Further rare and exceptional prints will be offered in the main body of the sale from a number of private properties including *Property of a Private European Collection*. With estimates ranging from £1,000 to £100,000, the sale is expected to realise in excess of £1 million and will offer collectors an exceptional opportunity to acquire rare works by some of the leading artists in the field. The star lot is a previously unrecorded impression of Katsushika Hokusai's (1760-1849) *Fuji at Dawn* (estimate: £80,000-100,000) (illustrated above). From the *Property of a Private European Collection* this is one of only seven known prints of Mount Fuji by Hokusai known as *The Pink Fuji*. Having not been seen in the public domain for over 50 years, the 100 lots, comprising 180 works, offered from this private collection were formed in the 1960s with the advice of renowned print specialist Jack Hillier.

Many originate from the celebrated collection of Henri Vever. *For more information on the Japanese Print sale please see separate release.*

Japanese Ceramics and Works of Art: Thursday 8th November at 10.30am



For centuries the Art of Japan has captivated western academics, scholars and collectors alike. Christie's South Kensington sale of *Japanese Ceramics and Works of Art* on Thursday 8 November 2007 provides the ideal occasion for new buyers to experience the appeal of this fascinating culture. Featuring several private collections encompassing netsuke, inro and prints, the sale offers a wide range of affordable art with estimates starting at £600. One of the highlights is a late 17th century *Kakiemon* figure of a standing *Bijin* (estimate: £20,000-30,000) (illustrated left).

Chinese Ceramics and Works of Art: Friday 9th November at 10.30am and 2.00pm Bid via Christie's LIVE™

The final sale in Christie's Asian Art week, *Chinese Ceramics and Works of Art* at South Kensington celebrates the renewed interest in China's historical and Imperial past. Showcasing 400 rare, collectible and decorative works from Antiquity through to the present this sale spans porcelain, pottery, works of art, paintings, and textiles. Highlights include an imposing *stone head* dating to the Tang Dynasty [618-907] (estimate: £20,000-30,000), an Imperial, *large yellow porcelain bowl*, dating from the reign of the Emperor Kangxi [1662-1722] (estimate: £10,000-15,000) (illustrated right) and a range of delicate and exquisite carvings in rhinoceros horn, ivory and jade.



###

*Images available on request
Visit Christie's Web site at www.christies.com*

Notes to Editors:

Public Viewing:

- Christie's London, 8 King Street, St James's SW1Y 6QT
Thursday, 1 November – Tuesday, 6 November 2007
- Christie's South Kensington, 85 Old Brompton Road, London SW7 3LD
Saturday, 3 November – Thursday, 8 November 2007

About Christie's

Christie's is the world's leading art business with global auction sales in 2006 that totalled £2.51 billion / \$4.67 billion. This 36% increase over 2005 marks the highest total in company and in art auction history. Christie's is a name and place that speaks of extraordinary art, unparalleled service, and international glamour. Founded in 1766 by James Christie, Christie's conducted the greatest auctions of the 18th, 19th and 20th centuries, and today remains a popular showcase for the unique and the beautiful. Christie's offers over 600 sales annually in over 80 categories, including all areas of fine and decorative arts, jewellery, photographs, collectibles, wine and more. Prices range from \$200 to over \$80 million. Christie's has 85 offices in 43 countries and 14 salerooms around the world including London, New York, Los Angeles, Paris, Geneva, Milan, Amsterdam, Tel Aviv, Dubai and Hong Kong. Most recently, Christie's has led the market with expanded initiatives in emerging markets such as China, India and the United Arab Emirates, with successful sales and exhibitions in Beijing, Dubai, Mumbai and Russia. Christie's also offers its clients worldwide access to its sales through Christie's LIVE, its unique, real-time online bidding service.