

**For Immediate Release**

December 30, 2008

Contact: Erin McAndrew      212.636.2680      [emcandrew@christies.com](mailto:emcandrew@christies.com)

**RARE AND ENTICING MARITIME COLLECTIBLES AT  
CHRISTIE'S NEW YORK ON JANUARY 15**



**New York** – A large model of a British ship-of-the-line carved from bone and ebony, a 1916 New York Yacht Club trophy, and a scrimshaw whale's tooth depicting the female pirate Fanny Campbell are some of the rare and enticing collectibles included in Christie's Maritime Decorative Arts sale on January 15, 2009. The auction of over 200 items is devoted to high-quality maritime collectibles, including ships models, furniture, paintings, ship fittings, scrimshaw, silver, clocks, folk art and vintage photography.

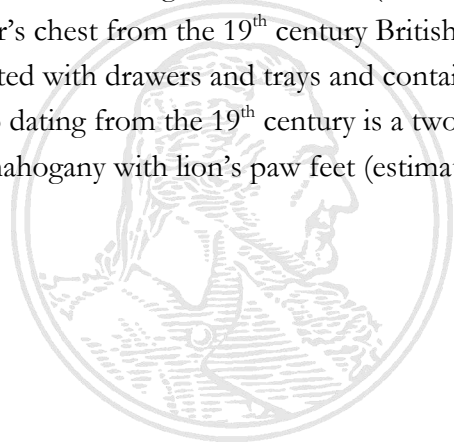
Among the highlights of the upcoming January sale are two rare ship models. The first, a large Napoleonic prisoner-of-war model is hollowed, planked and pinned in bone from the keel to the waterline, and accented with an ebony waist. Among the intricate details carved in bone are the ship's figurehead, a belfry with a bone bell, life boats, and a pair of Jacob's ladders. The model – created in the late 18<sup>th</sup> or early 19<sup>th</sup> century – is unusual for its large size, measuring 31 x 41 ½ inches (estimate: \$80,000 - \$120,000).

The second is an exceptional exhibition-standard model of the schooner yacht *Brilliant* by Joseph Wheeler Appleton, one of the premier ship model builders of the 20<sup>th</sup> century. Appleton created the model in 1933 after sailing aboard the *Brilliant* during a record-setting trans-Atlantic crossing. Appleton's models appear only rarely on the auction market; two others are in the permanent collection of the New York Yacht Club. His *Brilliant* model, judged as an "extraordinary" example of craftsmanship, was displayed at the Yacht Club for nearly 50 years, and has been passed down in private hands from its original owner, Walter Barnum of Connecticut (estimate: \$40,000 – 60,000).

For devotees of yachting collectibles, the sale offers a silver New York Yacht Club trophy from 1916. The engraved trophy was presented by J.P. Morgan, a vice commodore of the club, to the crew of the *Aurora*, a First Division sloop built for Cornelius Vanderbilt (estimate: \$10,000 – 15,000). Another highlight of the section is a 19<sup>th</sup> century mahogany yacht tiller from a private Swiss collection. Carved in an intricate rope-work pattern and topped with a monkey's fist knot at the head, the tiller measures just over 7 feet long (estimate: \$12,000 – 18,000).

Among many excellent examples of scrimshaw in the sale is an exquisitely detailed image of New Bedford harbor and the ship *Kutusoff* carved on whale's tooth by the early 20<sup>th</sup> century scrimshander William Perry. Perry's work is featured in several museum collections, including the Nantucket and the New Bedford whaling museums (estimate: \$12,000 – 18,000). Among the 19<sup>th</sup> century scrimshaw offerings is a whale's tooth attributed to the Bogota artist. The large tooth is decorated with an image of an American ship and an eagle clutching a shield (estimate: \$15,000 – 25,000). Also from the 19<sup>th</sup> century is a scrimshaw whale's tooth bearing the image of the female pirate Fanny Campbell. Immortalized by the author Maturin Murray Ballou in 1845, Fanny is described as a woman who could "row a boat, shoot a panther, ride the wildest horse in the province, or do almost any brave and useful act" (estimate: \$5,000 – 7,000).

In keeping with recent strong sales of campaign furniture, the upcoming sale includes an 18<sup>th</sup> century portable roll top desk and stand originally owned by the Starbuck family of Nantucket. Crafted of camphorwood and maple, the desk was part of the Barbara Johnson Whaling Collection, one of the most prominent American collections of maritime and whaling decorative arts (estimate: \$3,000 – 5,000). Another furniture highlight is a carpenter's chest from the 19<sup>th</sup> century British gun ship *H.M.S. St. Vincent*. The hand-painted chest is fitted with drawers and trays and contains 29 different carpentry tools (estimate: \$8,000 – 10,000). Also dating from the 19<sup>th</sup> century is a two-part Anglo-Chinese campaign chest of camphorwood and mahogany with lion's paw feet (estimate: \$4,000 – 6,000).



**Auction:** Maritime Decorative Arts Thursday, January 15 at 10 am

**Viewing:** Christie's Rockefeller Galleries, New York

Saturday	January 10	10:00 am -5:00 pm
Sunday	January 11	1:00 pm - 5:00 pm
Monday	January 12	10:00 am -5:00 pm
Tuesday	January 13	10:00 am -5:00 pm
Wednesday	January 14	10:00 am -2:00 pm

**About Christie's**

Christie's is the world's leading art business with global art sales in 2007 that totalled £3.1 billion/\$6.3 billion. This marks the highest total in company and in art auction history. For the first half of 2008, art sales totalled £1.8 billion / \$3.5 billion. Christie's is a name and place that speaks of extraordinary art, unparalleled service and expertise, as well as international glamour. Founded in 1766 by James Christie, Christie's conducted the greatest auctions of the 18th, 19th and 20th centuries, and today remains a popular showcase for the unique and the beautiful. Christie's offers over 600 sales annually in over 80 categories, including all areas of fine and decorative arts, jewellery, photographs, collectibles, wine, and more. Prices range from \$200 to over \$80 million. Christie's has 85 offices in 43 countries and 14 salerooms around the world including in London, New York, Los Angeles, Paris, Geneva, Milan, Amsterdam, Tel Aviv, Dubai, Hong Kong and Zurich. Most recently, Christie's has led the market with expanded initiatives in emerging and new markets such as Russia, China, India and the United Arab Emirates, with successful sales and exhibitions in Beijing, Mumbai and Dubai.

\*Estimates do not include buyer's premium

###

