

For Immediate Release
6 May 2010

Press Release

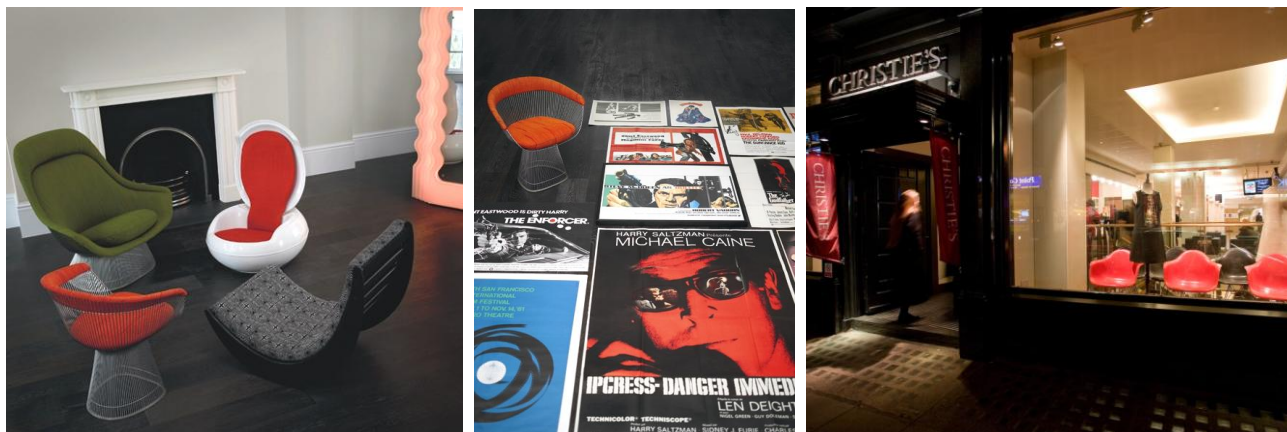
CHRISTIE'S

Contact: Leonie Ashfield

020 7752 3121

lashfield@christies.com

VINTAGE, MODERN AND ANTIQUE HOME FURNISHINGS AT CHRISTIE'S SOUTH KENSINGTON IN JUNE



South Kensington – On 22 June 2010, Christie's Interiors sale goes retro, embracing mid-century modern lifestyle and design, with estimates from £300. Christie's Interiors sales offer the ultimate opportunity to source a diverse and eclectic selection of home furnishings with an extensive selection of lots in each sale including everything from ceramics and textiles to furniture and lighting, whilst each piece is defined by its inherent value and design integrity. The second June sale in this category celebrates fun and funky modern interiors, presenting a large selection of top quality modern design items, and modern and contemporary paintings, as well as antique furniture, carpets, decorative objects and much more. Vintage film posters feature in the same magazine-style catalogue, and will be offered the following day, on 23 June 2010.

Modern Design



A set of four 'La Fonda' dining chairs by Charles & Ray Eames, designed 1961
Estimate: £2,000-3,000



A model 'HF1' television set by Herbert Hirche, designed 1958
Estimate: £500-700



An Eero Saarinen 'tulip' dining suite, designed 1956
Estimate: £2,000-3,000

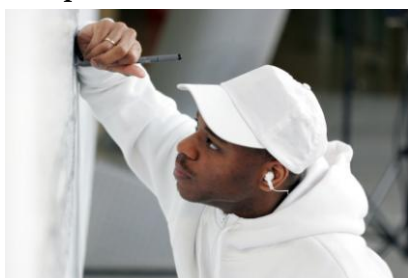


A cube stereo system, circa 1970
Estimate: £500-700

The sale includes a selection of over thirty interesting highlights from a *Private London Collection* that illustrate progressive space age styling, the trend that defined international design of the 1950s, 60s and 70s. The pieces on offer demonstrate an emphasis on the use of new materials sculpted into fantastic fibreglass shapes from respected designers such as Eero Saarinen, Verner Panton, Joe Colombo, Ettore Sottsass and Marc Newson. These striking

works have estimates ranging from just £500, and are sure to brighten up any room in your home. *Further examples and images available upon request.

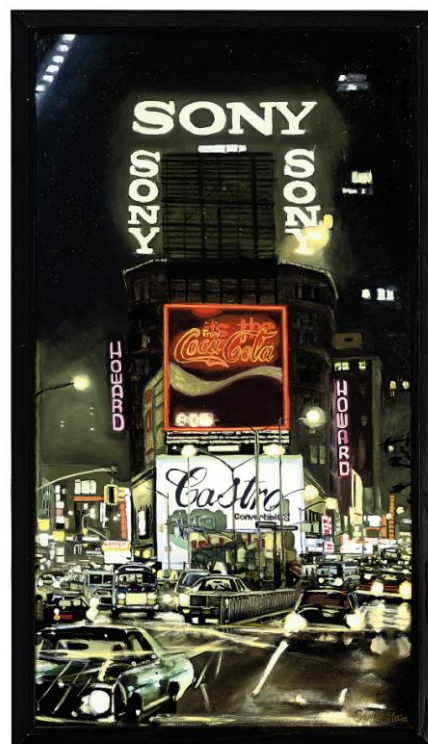
Stephen Wiltshire



Courtesy of Stephen Wiltshire Gallery

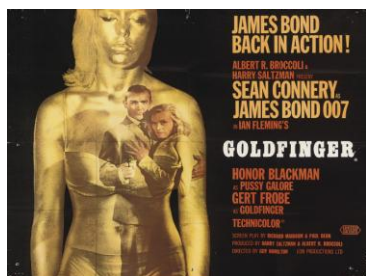
Christie's Interiors sales offer a wide array of decorative paintings, specifically chosen to complement the furniture, decorative arts, and other home furnishings on offer. Every item featured in a Christie's sale is valued and fully researched by our experienced experts. One particularly interesting painting on offer on 22 June 2010 is *Times Square at Night*, 1995 by Stephen Wiltshire MBE (estimate: £10,000-15,000). A gifted contemporary artist, Stephen is known worldwide for his detailed cityscapes, often drawn and painted from memory, as was this work.

Stephen's talent was discovered as a child, whilst attending Queensmill School in London. Diagnosed with autism, Stephen was unable to communicate through speech, and used his drawing to interact with the world. It was his teachers at the school who taught him how to speak, by taking away his pens, pencils and paintbrushes, so that he had to ask for them back. As a post-graduate student at City & Guilds College, Stephen developed his painting skills to photorealistic perfection. Painted in February 1995, *Times Square at Night* was the third oil painting he ever attempted, and has since become one of his most iconic creations to date.



Stephen was awarded an MBE for services to the art world in 2006. His work is popular all over the world, and is held in a number of important collections. In October and November 2003, thousands flocked to the Orleans House gallery in Twickenham near London, to see the first major retrospective of Stephen's work. The exhibition covered the 20-year period, from 1983 to 2003, and comprised 150 examples of Stephen's drawings, paintings and prints. Visit www.stephenwiltshire.co.uk to find out more about the artist, interviews available upon request.

Vintage Film Posters



Goldfinger
1964, Eon/United Artists, British quad, art by Robert Brownjohn
Estimate: £1,500-2,500



Barbarella
1968, Paramount, British subway, art by Robin Ray
Estimate: £700-900



The Great Escape
1963, United Artists, British quad
Estimate: £800-1,200



The Prince and The Showgirl
1957, Warner Bros U.S.
Estimate: £500-700

The first sale offered by the Popular Culture department at Christie's South Kensington in 2010 is that of *Vintage Film Posters*, to be held on 23 June 2010. The sale will pay tribute to all genres of cinematic history, from cult horror and sci-fi films, to the icons of the silver screen featuring artwork from a range of epic films including stars such as:

Steve McQueen, Sean Connery, Audrey Hepburn, Marlene Dietrich, Veronica Lake, Humphrey Bogart and Marilyn Monroe. This popular biannual sale comprises approximately 250 lots of original cinema posters ranging from the early years of cinema to the 1990s, with estimates ranging from £300 to £6,000. One particularly eye-catching poster featured in the sale is a rare poster, originally intended for display in the subway, for the classic Barabarella film starring Jane Fonda *illustrated above, second from left* (estimate: £700-900).

#

High resolution images and further information available upon request

www.christies.com/departments/interiors

www.christies.com/departments/popular-culture

Notes to Editors:

Public Viewing: Saturday 19 June: 10.00am – 4.00pm
Sunday 20 June: 10.00am – 4.00pm
Monday 21 June: 9.00am – 7.30pm
Tuesday 22 June: 9.00am – 10.30am

Auctions: **Interiors** - Tuesday, 22 June at 10.30am
Vintage Film Posters - Wednesday, 23 June at 10.30am

Ecatalogues: Available online from 20 May 2010 at www.christies.com/calendar

Christie's South Kensington

Christie's South Kensington caters for every collector – from the seasoned connoisseur to those discovering the pleasure of buying at auction for the first time. Specialised sales are broken down into individual departments. Sales are usually held twice a year dependent on category, offering rare and important works of art, decorative objects and collectibles ranging from Old Master and 19th Century Art to Popular Culture Memorabilia. Interiors sales and single owner collections are held more regularly and encapsulate a wide-range of categories in one sale. With items usually offered at a lower price point these sales often appeal to those buying items for the home. Every item featured in a Christie's sale is valued and fully researched by our experienced experts who possess extensive knowledge of the market and their specialist areas. Trade and private buyers alike are drawn to the welcoming and brightly lit saleroom in South Kensington by the treasures on offer throughout the sales calendar year.

CHRISTIE'S SOUTH KENSINGTON

85 Old Brompton Road, London, SW7 3LD

OPENING SEVEN DAYS A WEEK

Monday: 9.00am – 7.30pm

Tuesday – Friday: 9.00am – 5.00pm

Saturday & Sunday: 10.00am - 4.00pm

WWW.CHRISTIES.COM

Prices do not include buyers' premium