

# CHRISTIE'S

PRESS RELEASE | NEW YORK  
FOR IMMEDIATE RELEASE | 19 FEBRUARY 2013

## CHRISTIE'S PRESENTS THE MARCH SALE OF JAPANESE AND KOREAN ART



Lot 761 – A Rare Massive White Porcelain Jar  
Joseon Dynasty (18<sup>th</sup> century)  
22 x 17 <sup>3</sup>/<sub>8</sub> in.  
Estimate on request



Lot 622 – A gold lacquer display cabinet (*kazaridana*)  
Edo period (19<sup>th</sup> century)  
45 ½ x 18 x 42 ½ in.  
Estimate: \$200,000-300,000

**New York** - On 20 March, Christie's will present the Spring sale of *Japanese and Korean Art*, which contains over 290 of the finest examples of painted screens, scrolls, calligraphy, woodcut prints, ceramics, lacquer, armor, and swords. Among the Japanese highlights are a 19<sup>th</sup> century gold lacquer display cabinet and a large bronze and mixed-metal hanging vase, while the Korean portion of the sale includes a rare massive white porcelain jar and a mixed media work by Park Sookeun, entitled *Five Seated Figures*.

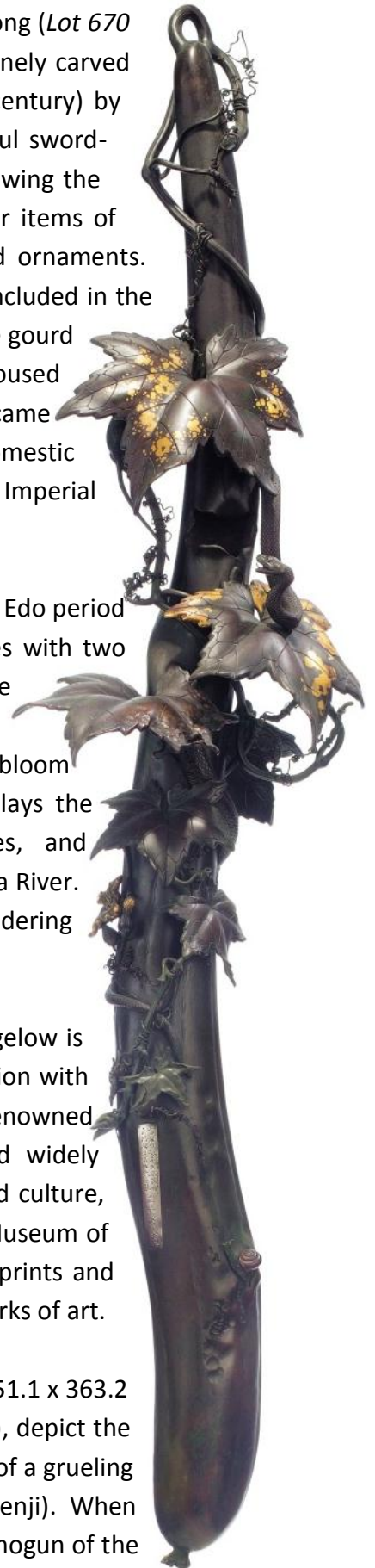
## JAPANESE ART

The Japanese section of the sale is led by an elaborate large bronze and mixed-metal hanging vase, formed as a large gourd entwined with a vine, 50 in. (127cm) long (*Lot 670 – pictured right*; estimate: \$300,000-400,000). The work, which features a finely carved snake in pursuit of a mouse, was executed in the Meiji period (late 19<sup>th</sup> century) by Shoami Katsuyoshi. Katsuyoshi followed his father's occupation as a successful sword-fitting metal worker for the first part of his career. In 1871, however, following the prohibition against wearing swords, he turned to the manufacture of other items of metal, including tea ceremony equipment, small personal accessories, and ornaments. There exist a number of works by Katsuyoshi that have leaves and wildlife included in the design, such as this example, with its exquisitely carved snake scrolling up the gourd toward a mouse hidden under a leaf, as well as a similar iron gourd that is housed in the British Museum. Over the course of his career, Katsuyoshi became particularly skillful at gold and silver inlay. In addition to being lauded at domestic and international expositions, some of his works were even acquired by the Imperial Household.

A gold lacquer display cabinet, *kazaridana*, was completed in the 19<sup>th</sup> century Edo period (*pictured page 1*; estimate: \$200,000-300,000) and features a set of shelves with two compartments that are carved with the famed landscapes of Yoshino and the Tatsuta River. Long celebrated for its beauty in Japanese poetry, Yoshino boasts one hundred thousand white cherry blossom trees, which burst into bloom for two weeks each spring. In its depiction of Yoshino, the cabinet displays the landscape with its magnificent trees, hills, rivers, mountain cottages, and footbridges. The autumn counterpart to Yoshino is the scenery of the Tatsuta River. Featured on the back panels on the interior of the cabinets, the peaceful rendering includes the riverbanks filled with red maple trees and flowing leaves.

A selection of 34 woodblock prints from the Collection of William Sturgis Bigelow is being sold by the Museum of Fine Arts, Boston, for the benefit of the collection with estimates ranging from \$400 to \$5,000. The prints were all purchased by renowned Boston collector, William Sturgis Bigelow (1850-1926). Bigelow traveled widely throughout Japan and lived there for seven years, studying Japanese art and culture, and he converted to the Tendai sect of Buddhism. By 1911, he gave the Museum of Fine Arts, Boston the bulk of his collection, including an estimated 40,000 prints and 450 ukiyo-e paintings, as well as some 15,000 other Chinese and Japanese works of art.

A pair of six-panel screens from the 17<sup>th</sup> century Edo period, 59 ½ x 143in. (151.1 x 363.2 cm) each (*Lot 567 – left screen pictured page 3*; estimate: \$100,000-150,000), depict the iconic battles of Ichinotani and Yashima, which took place in 1184 at the end of a grueling five-year war between two rival clans, the Taira (Heike) and the Minamoto (Genji). When the Minamoto emerged victorious, their leader, Yoritomo, became the first shogun of the





new military government. A century later, the battles were immortalized in the 13<sup>th</sup> century historical novel *The Tale of the Heike*. The right screen illustrates the battle in the spring at Ichinotani (near present-day Kobe), while the left screen depicts the Taira retreat to Yashima, following their defeat.



#### ADDITIONAL JAPANESE HIGHLIGHTS



Lot 654 – A Blue-Laced Nimai-Do Gusoku (Armor)  
Edo Period (17<sup>th</sup>-18<sup>th</sup> Century)  
Estimate: \$50,000-70,000



Lot 559 – Yokoyama Taikan  
*Pine trees and cranes*  
Pair of six-panel screens; right screen illustrated  
67 x 151 <sup>1</sup>/<sub>8</sub> in. (170.2 x 383.9cm) each (2)  
Estimate: \$150,000-200,000



Lot 609 – A Lacquer Writing Box And Matching Stationery Box  
Edo Period (19<sup>th</sup> Century)  
(Stationery Box Illustrated)  
Estimate: \$40,000-50,000



## KOREAN ART

Highlighting the Korean portion of the sale is a selection of exquisite porcelains, including a rare massive white porcelain jar from the 18<sup>th</sup> century Joseon dynasty, standing nearly two-feet tall (*pictured page 1*; estimate on request). The jar, which exhibits a blue cast where glaze has been more thickly applied, is remarkable for its distinctive height and girth. There have been few comparable examples published, including one from the collection of the Nihon Mingaikan in Tokyo. Also among the porcelain highlights is a large jar painted with flora and fauna in medium tones of underglaze blue, Joseon dynasty, 18<sup>th</sup>/19<sup>th</sup> century

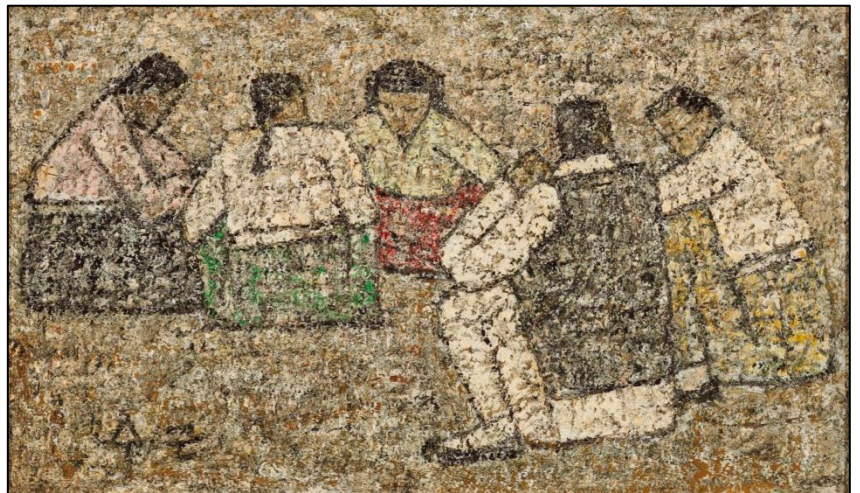
(Lot 769 – *pictured right*; estimate: \$350,000-400,000). The two flowers chosen for this jar, the orchid and the chrysanthemum, are two of the four, with the bamboo and plum, that represent the honor and virtue of the literatus.



A blue and white porcelain bottle from the 19<sup>th</sup> century Joseon dynasty beautifully depicts the Ten Signs of Long Life (*shipjangaeng*), including a deer, a *bullocho* fungus, pines, bamboo, rock, and clouds (Lot 764 – *pictured left*; estimate: \$45,000-50,000). The technical refinement of the work testifies to the skill of the Joseon ceramic artists. The auspicious imagery is portrayed in a frieze around the octagonal body of the bottle, which stands approximately six inches tall.

From a private U.S. collection, Park Sookeun's mixed-media painting *Five Seated Figures* is among the sale's modern highlights (Lot 788 – *pictured below*; estimate: \$400,000-500,000). A quintessential work by the artist, *Five Seated Figures* is modest in scale, somber, roughly textured, and unassuming. These qualities, combined with the abstract, simplified rendering of his idyllic scenes of everyday life, not only contribute to the poetic nature of his works, but have also

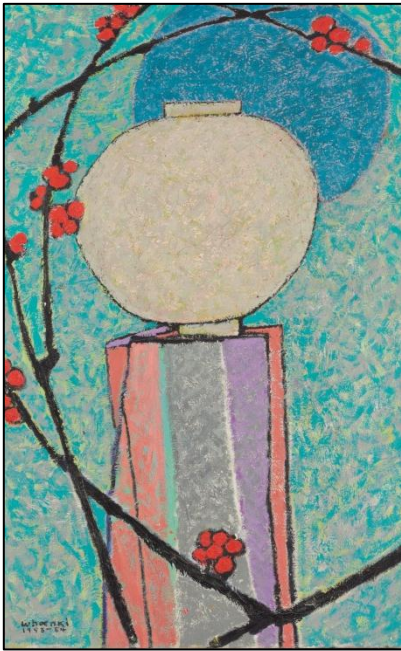
made them truly iconic. Since Christie's first began selling the works of Park Sookeun nearly two decades ago, he has become the most sought-after modern Korean master.



## ADDITIONAL KOREAN HIGHLIGHTS



Lot 746 – Anonymous (19<sup>th</sup> Century)  
*Tribute mission at the Chinese court, 1877*  
 Ten-panel screen; ink and color on silk  
 54 x 155 ¼ in. (137 x 393.6cm)  
 Estimate; \$100,000-120,000



Lot 781 – Kim Whanki (1913-1974)  
*Moon and Plum Blossom, 1953-54*  
 Oil on canvas, framed  
 36 x 24in. (91.5 x 61cm)  
 Estimate: \$350,000-400,000



Lot 776 – A Gilt-Wood Seated Figure Of Amitabha Buddha  
 Joseon Dynasty (Circa 1900)  
 Estimate: \$12,000-15,000

---

PRESS CONTACT: Sung-Hee Park | +1 212 636 2680 | [spark@christies.com](mailto:spark@christies.com)  
 Jaime Bernice | +1 212 636 2680 | [jbernice@christies.com](mailto:jbernice@christies.com)

[The complete eCatalogue will be available on Christies.com.](http://christies.com)



### About Christie's

Christie's, the world's leading art business, had global auction and private sales in 2012 that totaled £3.92 billion/\$6.27 billion. Christie's is a name and place that speaks of extraordinary art, unparalleled service and expertise, as well as international glamour. Founded in 1766 by James Christie, Christie's has since conducted the greatest and most celebrated auctions through the centuries providing a popular showcase for the unique and the beautiful. Christie's offers over 450 auctions annually in over 80 categories, including all areas of fine and decorative arts, jewellery, photographs, collectibles, wine, and more. Prices range from \$200 to over \$100 million. Christie's also has a long and successful history conducting private sales for its clients in all categories, with emphasis on Post-War and Contemporary, Impressionist and Modern, Old Masters and Jewellery. Private sales totaled £631.3 million/\$1 billion in 2012, an increase of 26% on the same period last year.

Christie's has a global presence with 53 offices in 32 countries and 10 salerooms around the world including in London, New York, Paris, Geneva, Milan, Amsterdam, Dubai, Zürich, and Hong Kong. More recently, Christie's has led in growth markets such as Russia, China, India and the Middle East, with successful sales, exhibitions and initiatives in Moscow, Baku, Beijing, Mumbai, Delhi, Jeddah, Abu Dhabi, Doha and Dubai.

*\*Estimates do not include buyer's premium. Sales totals are hammer price plus buyer's premium and do not reflect costs, financing fees or application of buyer's or seller's credits.*

###

*Images available on request*

Visit Christie's Website at [www.christies.com](http://www.christies.com)

Complete catalogue available online at [www.christies.com](http://www.christies.com) or via the Christie's iPhone app

**FOLLOW CHRISTIE'S ON:**

