

CHRISTIE'S

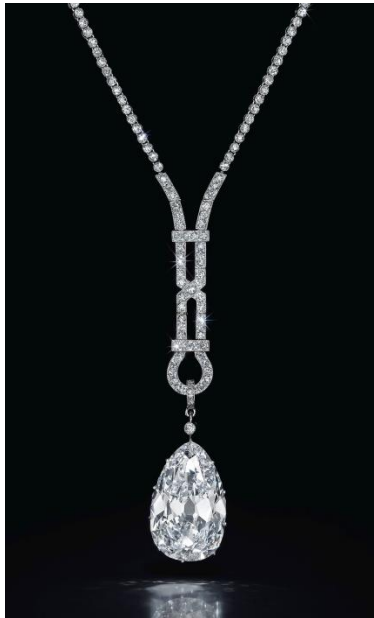
THE ART PEOPLE

PRESS RELEASE | NEW YORK | 5 JUNE 2015 | FOR IMMEDIATE RELEASE

IMPORTANT JEWELS June 16 at Christie's New York



A PEAR-SHAPED D-COLOR DIAMOND OF 5.06 CARATS
AND A PEAR-SHAPED FANCY PURPLISH PINK
DIAMOND OF 1.68 CARATS PENDANT NECKLACE
ESTIMATE: \$280,000 – \$350,000



AN ART DECO DIAMOND PENDANT NECKLACE
A PEAR-SHAPED D-COLOR INTERNALLY FLAWLESS
DIAMOND OF 16.24 CARATS
ESTIMATE: \$1,600,000 – \$2,000,000



THE KELLY SAPPHIRE
A CUSHION-CUT KASHMIR SAPPHIRE OF
21.71 CARATS, BY CARTIER
ESTIMATE: \$1,500,000 – \$2,000,000

Highlighted by

THE MAGNIFICENT JEWELS OF MARGARET ADDERLEY KELLY

NEW YORK – Following on the heels of Christie's blockbuster \$118 million jewelry auction in Hong Kong earlier this week and establishing a new record for the most valuable jewelry auction ever held in Asia, Christie's is pleased to announce highlights of its upcoming sale of *Important Jewels* on June 16 in New York. This annual pre-summer event caps the spring season of Christie's worldwide jewelry auctions and features over 200 lots, including a diverse array of colored and colorless diamonds, rare gemstones, and signed designer jewels. Estimates range from \$8,000 up to \$5 million, and the total sale is expected to achieve \$18 million.

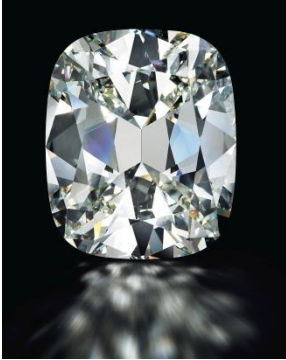


From modest beginnings in 1946 in Detroit, Michigan, **Mrs. Margaret Adderley Kelly** (pictured left), her husband, the late William R. Kelly and their son, Mr. Terence E. Adderley, shaped Kelly Services, Inc. into a Fortune 500 company that now employs over 550,000 people globally. The iconic "Kelly Girl" became a household name by 1957, synonymous with high-quality temporary employees. Philanthropy was a cornerstone of her life and many organizations benefitted from her immense generosity. In addition, jewels and fine gemstones were one of Mrs. Kelly's greatest passions that she collected with the discerning eye of a great connoisseur. The breadth of the collection was a testament to her love for the exceptional, rare, and beautiful. On June 16, Christie's is proud to offer *The Magnificent Jewels of Margaret Adderley Kelly*, highlights of which include an Art Deco diamond pendant

necklace suspending a D-color, Internally Flawless diamond of 16.24 carats (pictured page one) and *The Kelly Sapphire*: a Kashmir sapphire of 21.71 carats, by *Cartier* (pictured page one).

DIAMOND AND GEMSTONES HIGHLIGHTS

In keeping with Christie's strong track record of presenting the most exceptional colored and colorless diamonds and precious gemstones for sale, the top lot of the June 16 auction is an impressive cushion-cut K-color diamond of 80.73 carats (pictured below). Additional highlights include:



A CUSHION-CUT K-COLOR DIAMOND OF 80.73 CARATS
ESTIMATE: \$3,000,000 – \$5,000,000



A CUSHION-CUT FANCY INTENSE YELLOW VS2 DIAMOND OF 28.02 CARATS
ESTIMATE: \$700,000 – \$900,000



THE MAJESTIC BLUE
A CUSHION-CUT KASHMIR SAPPHIRE OF 9.97 CARATS
ESTIMATE: \$950,000 – \$1,250,000



A CUSHION-CUT K-COLOR VS2 DIAMOND OF 25.82 CARATS
ESTIMATE: \$600,000 – \$700,000



A CUT-CORNERED STEP-CUT DIAMOND OF 15.54, BY *CARTIER*
ESTIMATE: \$330,000 – \$450,000



An oval-cut Colombian emerald of 7.27 carats
ESTIMATE: \$260,000 – \$300,000



A PAIR OF DIAMOND EAR PENDANTS OF 6.10 AND 6.09 CARATS
ESTIMATE: \$200,000 – \$300,000



A CUT-CORNERED FANCY YELLOW DIAMOND OF 14.49 CARATS, BY *GRAFF*
ESTIMATE: \$250,000 – \$350,000

SIGNED JEWELS

Signed creations by world-renowned design houses such as Cartier, Graff, Tiffany & Co., and Van Cleef & Arpels continue to command strong prices at Christie's jewelry auctions around the world. Each of these esteemed firms has their own signature style of design and craftsmanship, making their jewels unique and highly sought-after among collectors and connoisseurs – and also very likely to retain or increase in value over the long term. Highlights of the signed jewels section of Christie's Important Jewels sale include:



AN ART DECO DIAMOND BRACELET, BY *CARTIER*
ESTIMATE: \$380,000 – \$450,000



A DIAMOND, EMERALD AND WHITE GOLD "PANTHÈRE" RING, BY *CARTIER*
ESTIMATE: \$40,000 – \$50,000



A COLORED DIAMOND, DIAMOND, EMERALD AND ENAMEL TIGER AND CUB BROOCH, BY *VAN CLEEF & ARPELS*
ESTIMATE: \$100,000 – \$150,000



A CHALCEDONY, DIAMOND AND GOLD CUFF BRACELET, BY *TIFFANY & CO.*
ESTIMATE: \$8,000 – \$12,000



Coming Soon
CHRISTIE'S JEWELS ONLINE
JUNE 11 – 25, 2015
WWW.CHRISTIES.COM/ONLINEONLY
[#CHRISTIESJEWELS](https://twitter.com/CHRISTIESJEWELS)

PRESS CONTACT: Gabriel Ford | +1 212 636 2680 | GFord@christies.com

About Christie's

Christie's, the world's leading art business, had global auction and private sales in 2014 that totalled £5.1 billion / \$8.4 billion, making it the highest annual total in Christie's history. Christie's is a name and place that speaks of extraordinary art, unparalleled service and expertise, as well as international glamour. Founded in 1766 by James Christie, Christie's has since conducted the greatest and most celebrated auctions through the centuries providing a popular showcase for the unique and the beautiful. Christie's offers around 450 auctions annually in over 80 categories, including all areas of fine and decorative arts, jewellery, photographs, collectibles, wine, and more. Prices range from \$200 to over \$100 million. Christie's also has a long and successful history conducting private sales for its clients in all categories, with emphasis on Post-War & Contemporary, Impressionist & Modern, Old Masters and Jewellery. Private sales totalled £916.1 million (\$1.5 billion).

Christie's has a global presence with 53 offices in 32 countries and 12 salerooms around the world including in London, New York, Paris, Geneva, Milan, Amsterdam, Dubai, Zürich, Hong Kong, Shanghai, and Mumbai. More recently, Christie's has led the market with expanded initiatives in growth markets such as Russia, China, India and the United Arab Emirates, with successful sales and exhibitions in Beijing, New Delhi, Mumbai and Dubai.

**Estimates do not include buyer's premium. Sales totals are hammer price plus buyer's premium and do not reflect costs, financing fees or application of buyer's or seller's credits.*

###

Images available on request

FOLLOW CHRISTIE'S ON:

