

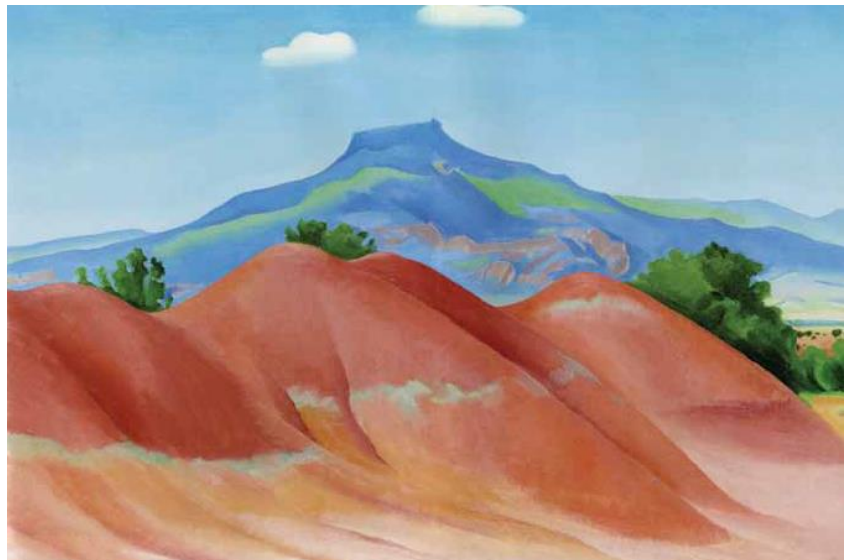
CHRISTIE'S

PRESS RELEASE | NEW YORK | 26 APRIL 2016 | FOR IMMEDIATE RELEASE

CHRISTIE'S AMERICAN ART SALE MAY 19

FEATURES A BROAD SPECTRUM OF 19TH AND 20TH CENTURY ARTISTIC MOVEMENTS

- MODERNIST WORKS BY AVERY, DOVE, O'KEEFFE, WEBER
- 19TH-CENTURY WORKS BY CHURCH, SARGENT, WHISTLER



ABOVE: The Collection of Kippy Stroud, Georgia O'Keeffe (1887-1986), *Red Hills with Pederal, White Clouds*, oil on canvas, 20 x 30 in. Painted in 1936.
Estimate: \$3,000,000-5,000,000

LEFT: Property from the Collection of J.E. Safra, Georgia O'Keeffe (1887-1986), *Lake George Reflection*, oil on canvas, 58 x 34 in. Painted circa 1921-22.
Estimate: \$8,000,000-12,000,000

New York—Christie's announces the spring sale of [American Art](#) taking place on Thursday, May 19 in Rockefeller Plaza. This comprehensive auction features 98 lots with works ranging from major American modernists, Georgia O'Keeffe, Arthur Dove, and Max Weber, to 19th-century masters, Frederic Edwin Church, John Singer Sargent, and James McNeill Whistler. Several private collections highlight the auction including The Collection of Kippy Stroud, The Gail and John Liebes Collection, Property of H.F. 'Gerry' Lenfest, and The Collection of Lois and Harry Horvitz.

Leading the sale, is a large-scale painting by [Georgia O'Keeffe \(1887-1986\)](#), *Lake George Reflection*, painted circa 1921-22, from the Collection of J.E. Safra (estimate: \$8,000,000-12,000,000). Inspired by O'Keeffe's frequent visits to the family home of Alfred Stieglitz, this work continues in the tradition of earlier Hudson River School painters inspired by the sublime topography of the region, but interpreted in O'Keeffe's avant-garde style of abstraction. The painting can be viewed either vertically or horizontally and this ambiguity of orientation creates a work that is at once highly representational and wholly abstract. First exhibited in 1923 by the artist at the Anderson Galleries, the work was hung vertically, encouraging

anthropomorphic comparisons most closely relating to her magnified flower imagery, which she was simultaneously exploring.

Four exceptional works by Georgia O'Keeffe highlight The Collection of Kippy Stroud, who was the founder of the Fabric Workshop Museum. Led by [Red Hills with Pedernal, White Clouds](#), painted in 1936 (estimate: \$3,000,000-5,000,000), this work embodies O'Keeffe's lifelong fascination with shapes and colors found in nature as well as her close connection to the American Southwest. Also included in the collection is an early abstract watercolor by O'Keeffe, [Blue I](#), executed in 1916, (estimate: \$2,500,000-3,500,000), which represents her investigation of pure abstraction and acts as one of the earliest and most original abstract images in the history of American art. *Blue I* is the current auction record for a watercolor by O'Keeffe, having previously sold for \$3,008,000 at Christie's New York.

From The Collection of H.F. 'Gerry' Lenfest is [Max Weber's \(1881-1961\), New York](#), painted in 1913 (estimate: \$1,500,000-2,500,000), which is among the earliest works to depict America's energized and technologically advanced era at the turn of the century. The large-scale oil on canvas was executed following the artist's return to New York City after an extended stay in Paris. With a fusion of Cubist and Futurist elements, *New York* marks the moment of Weber's breakthrough into his singular modernist style. This work debuted the same year it was painted, featuring prominently in Roger Fry's first Grafton Group Exhibition in London, where Weber was the best represented artist in this significant international exhibition.

Highlighting the 19th-century works is an exceptional landscape by [Frederic Edwin Church \(1826-1900\), A New England Lake](#), (estimate: \$3,500,000-5,500,000), painted in 1854. Executed during a momentous turning point in his career, this work represents the culmination of Church's early years perfecting his notion of New England topography, but also a pivotal change in style integrating the more dramatic light and aura which would create his blockbuster works of the following years.

Other 19th-century highlights come from the Gail and John Liebes Collection, including a stunning portrait by [John Singer Sargent \(1856-1925\), François Flameng and Paul Helleu](#), painted circa 1880 (estimate: \$1,200,000-1,800,000) and a large-scale floral still-life by [John La Farge \(1835-1910\), Hollyhocks](#), painted in 1863 (estimate: \$600,000-800,000).

The Western selection is led by [Alfred Jacob Miller's \(1810-1874\), Pawnee Running a Buffalo](#), painted in 1854, (estimate: \$1,000,000-1,500,000), commissioned for the same family whose collection it has remained in until now. Other Western highlights come from the Collection of Lois and Harry Horvitz, including [Frank Tenney Johnson's \(1874-1939\), Through the Starlit Hours](#), painted in 1935 (estimate: \$150,000-250,000).

ADDITIONAL HIGHLIGHTS | AMERICAN ART | THURSDAY, 19 MAY 2016

AMERICAN MODERNISTS



THE COLLECTION OF KIPPY STROUD
Georgia O'Keeffe (1887-1986)
[Blue I](#), watercolor on paper
31 x 22 1/4 in. Executed in 1916.
Estimate: \$2,500,000-3,500,000



THE COLLECTION OF KIPPY STROUD
Georgia O'Keeffe (1887-1986)
[The Barns, Lake George](#), oil on canvas
21 x 32 1/4 in. Painted in 1926.
Estimate: \$2,000,000-3,000,000



THE COLLECTION OF KIPPY STROUD
Georgia O'Keeffe (1887-1986)
[Fig](#), oil on board
8 1/4 x 6 in. Painted in 1923.
Estimate: \$300,000-500,000



THE COLLECTION OF KIPPY STROUD
Marsden Hartley (1877-1943)
[Flowers](#), oil on canvas
16 x 13 in.
Painted circa 1925.
Estimate: \$120,000-180,000



Arthur G. Dove (1880-1946)
[Abstract of a Threshing Engine Sawing Wood II](#)
oil on board, 15 1/8 x 20 in.
Painted in 1931.
Estimate: \$1,200,000-1,800,000



PROPERTY OF H.F. 'GERRY' LENFEST
Max Weber (1881-1961)
[New York](#)
oil on canvas, 40 x 32 in.
Painted in 1913.
Estimate: \$1,500,000-2,500,000

19TH - CENTURY



THE GAIL AND JOHN LIEBES COLLECTION
John Singer Sargent (1856-1925)
[François Flameng and Paul Helleu](#)
oil on canvas, 21 x 17 in.
Painted circa 1880.
Estimate: \$1,200,000-1,800,000



Frederic Edwin Church (1826-1900)
[A New England Lake](#)
oil on canvas, 30 x 42 in.
Painted in 1854.
Estimate: \$3,500,000-5,500,000



THE GAIL AND JOHN LIEBES COLLECTION
John La Farge (1835-1910)
[Hollyhocks](#)
encaustic on panel, 34 x 15 in.
Painted in 1863.
Estimate: \$600,000-800,000

WESTERN ART



PROPERTY FROM THE COLLECTION OF
LOIS AND HARRY HORVITZ
Frank Tenney Johnson (1874-1939)
[Through the Starlit Hours](#)
oil on canvas, 25 x 30 1/8 in.
Painted in 1935
Estimate: \$150,000-250,000



PROPERTY FROM AN IMPORTANT
BALTIMORE COLLECTION
Alfred Jacob Miller (1810-1874)
[Pawnee Running a Buffalo](#)
oil on canvas, 20 x 24 in., oval
Painted in 1854.
Estimate: \$1,000,000-1,500,000



PROPERTY OF A DISTINGUISHED LADY
AND GENTLEMAN
Maynard Dixon (1875-1946)
[The Prairie](#)
oil on canvas, 62 x 78 in.
Painted in 1915
Estimate: \$600,000-800,000

PRESS CONTACT

Jennifer Cuminale | +1 212 636 2680 | jcuminale@christies.com

About Christie's

Christie's, the world's leading art business, had global auction, private and digital sales in 2015 that totalled £4.8 billion / \$7.4 billion. Christie's is a name and place that speaks of extraordinary art, unparalleled service and expertise, as well as international glamour. 2016 marks Christie's 250th anniversary. Founded in 1766 by James Christie, Christie's has since conducted the greatest and most celebrated auctions through the centuries providing a popular showcase for the unique and the beautiful. Christie's offers around 350 auctions annually in over 80 categories, including all areas of fine and decorative arts, jewellery, photographs, collectibles, wine, and more. Prices range from \$200 to over \$100 million. Christie's also has a long and successful history conducting private sales for its clients in all categories, with emphasis on Post-War & Contemporary, Impressionist & Modern, Old Masters and Jewellery.

Christie's has a global presence with 54 offices in 32 countries and 12 salerooms around the world including in London, New York, Paris, Geneva, Milan, Amsterdam, Dubai, Zürich, Hong Kong, Shanghai, and Mumbai. More recently, Christie's has led the market with expanded initiatives in growth markets such as Russia, China, India and the United Arab Emirates, with successful sales and exhibitions in Beijing, Mumbai and Dubai.

**Estimates do not include buyer's premium. Sales totals are hammer price plus buyer's premium and do not reflect costs, financing fees or application of buyer's or seller's credits.*

###

Images Available Upon Request

FOLLOW CHRISTIE'S ON:

