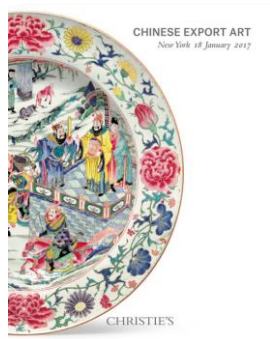




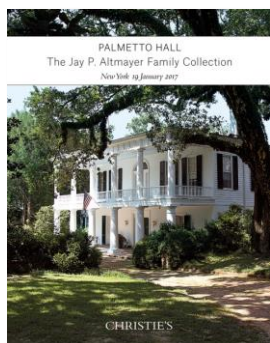
CHRISTIE'S

PRESS RELEASE | NEW YORK | 22 DECEMBER 2016 | FOR IMMEDIATE RELEASE

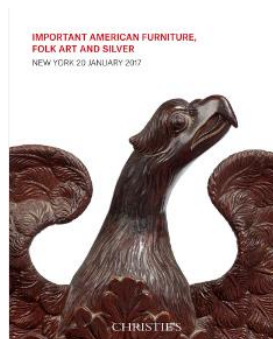
AMERICANA WEEK 2017



Chinese Export Art
January 18, 2017



Palmetto Hall: The Jay P. Altmayer Family Collection
January 19, 2017



Important American Furniture, Silver, and Folk Art
January 20, 2017



Courageous Spirits: Outsider and Vernacular Art
January 20, 2017

New York – Christie's is pleased to announce **Americana Week 2017**, a series of auctions, viewings and events, will be held from January 13-20. The week of sales is comprised of **Chinese Export Art** on January 18, **Palmetto Hall: The Jay P. Altmayer Family Collection** on January 19, **Courageous Spirits: Outsider and Vernacular Art** and **Important American Furniture, Folk Art, and Silver** on January 20.

Highlights include **31 Chinese snuff boxes** (estimates ranging from \$1,500 to \$10,000), a **George A. Schastey Aesthetic Movement grand piano** (estimate: \$300,000-500,000), a rare pair of **Queen Anne maple chairs, possibly by William Savery**, a group of furniture from the pioneering collector **Mrs. J. Insley Blair**, a pair of extremely rare **silver candlesticks by Simeon Soumaine** (estimate: \$100,000-200,000) a pair of **silver braziers by John Burt** (estimate: \$100,000-200,000), a magnificent sculpture titled **Lion by William Edmondson** (estimate: \$200,000-400,000) and significant works by Outsider artists **Bill Traylor, William Hawkins, Elijah Pierce** and more.

The auction of **Palmetto Hall: The Jay P. Altmayer Family Collection** punctuates the week with a unique collection of Southern art depicting American landscapes, heroes and events, fine English furnishings and classical European decorative objects.

In all, **Americana Week 2017** will offer over 750 lots and is expected to realize upwards of \$7.5 million. In conjunction with the sales, Christie's will host the annual **Eric M. Wunsch Award for Excellence in the American Arts** on Wednesday, January 18th and will host tours and events in collaboration with the Outsider Art Fair.

AMERICANA WEEK PREVIEW DATES

Preview exhibition | January 13-19

AMERICANA WEEK SALE DATES

Chinese Export Art | January 18 | 2pm

Palmetto Hall: The Jay P. Altmayer Family Collection | January 19 | 10am

Courageous Spirits: Outsider and Vernacular Art | January 20 | 10am

Important American Furniture, Silver, and Folk Art | January 20 | 10:30am & 2pm

RELATED CONTENT PIECES

HOW TO MIX TRADITIONAL AND MODERN

WHY GEORGIAN GENTLEMAN LOVED SNUFF-BOXES

MAPPING STYLES ACROSS STATES

COLLECTING GUIDE: CHINESE EXPORT PORCELAIN

CHINESE EXPORT ART | JANUARY 18

Christie's Americana Week kicks off with **Chinese Export Art** on January 18, which offers approximately 200 lots and is highlighted by classic pieces from old private collections. Leading the sale is the **Popowich Collection**, carefully assembled over a number of decades by Lorraine and David Popowich of Philadelphia, and comprising 93 lots of high quality examples of all the major categories of Chinese Export. Included in the Popowich Collection is a group of **31 snuffboxes** (estimates ranging from \$1,500-10,000), likely the largest of its kind, with fascinating examples in famille rose, European subject and armorial porcelain and painted enamel.

Other sale highlights include **A Rare and Massive Market Punchbowl** (estimate: \$10,000-15,000) finely painted with hunting and racing vignettes made for the American market, the exact pair to which is at the Winterthur Museum; **A Massive Famille Rose Dish from the Yongzheng/early Qianlong Period** (estimate: \$20,000-30,000) and **A Very Large Pair of Iron-red and Gilt Vases** (estimate: \$30,000-50,000).

Highlights | CHINESE EXPORT ART | January 18, 2017



THE POPOWICH COLLECTION OF CHINESE EXPORT PORCELAIN

A very rare collection of thirty-one 18th century Chinese export snuffboxes, Estimates range from \$1,500 to \$10,000



A RARE AND MASSIVE AMERICAN MARKET PUNCHBOWL

circa 1795-1800
Diameter 22 1/2 inches
Estimate: \$10,000 - 15,000



A MASSIVE FAMILLE ROSE DISH

Yongzheng/early Qianlong period
Diameter 21 inches
Estimate: \$20,000 - \$30,000



A VERY LARGE PAIR OF IRON-RED AND GILT VASES

Kangxi period (1662-1722)
Height 28 1/4 inches high.
Estimate: \$30,000 - \$50,000

PALMETTO HALL: THE JAY P. ALTMAYER FAMILY COLLECTION | JANUARY 19

Stately and elegant, **Palmetto Hall: The Jay P. Altmayer Family Collection** encompasses old world grandeur and Southern charm. Built in 1846 in Mobile, Alabama, the home was given a second life in 1959 through the impassioned interests of Mr. and Mrs. Jay Altmayer. Throughout their forty years at Palmetto Hall, the Altmayers thoughtfully expanded the house and appointed it with traditional furnishings that would have occupied a personal residence of that stature during the 19th century. Resulting is a unique collection of Southern art, depictions of American historical events, classical European furnishings and decorative works that offers an unparalleled window into the refined glamor of the old South.

Fine art highlights are led by 19th-century paintings including a wonderful Southern scene by **William H. Buck (1840-1888)**, **Bay St. Louis Plantation Scene** (estimate: \$70,000-100,000). Decorative highlights include **A George II Mahogany Bookcase Cabinet, circa 1750** (estimate: \$60,000-100,000); **A Regency Lacquered-Brass Mounted and Brass-inlaid Rosewood, Ebony, and Ebonized Side Cabinet by George Bullock, circa 1815** (estimate: \$70,000-100,000); and **A Pair of Regency Ormolu Bottle Coolers, circa 1805** (estimate: \$70,000-100,000).

Highlights | THE JAY P. ALTMAYER FAMILY COLLECTION | January 19, 2017



WILLIAM H. BUCK (1840-1888) *Bay St. Louis Plantation Scene*

Estimate: \$70,000-100,000



A REGENCY LACQUERED-BRASS MOUNTED AND BRASS-INLAID ROSEWOOD, EBONY AND EBONIZED SIDE CABINET

BY GEORGE BULLOCK, CIRCA 1815
Estimate: \$70,000-100,000



A GEORGE II MAHOGANY BOOKCASE CABINET CIRCA 1750

Estimate: \$60,000-100,000



A PAIR OF REGENCY ORMOLU BOTTLE COOLERS, BEARING THE ARMS OF 1ST VISCOUNT ANSON, CIRCA 1810

Estimate: \$70,000-100,000

COURAGEOUS SPIRITS: OUTSIDER AND VERNACULAR ART | JANUARY 20

Following the success of last year's inaugural stand-alone various owner sale of Outsider art, Christie's is pleased to announce the dedicated auction ***Courageous Spirits: Outsider and Vernacular Art*** to take place on January 20, 2017.

This tightly curated sale features nearly 70 lots across various media, including sculpture, painting, works-on-paper, and gelatin silver print photographs from preeminent "old masters" of Outsider art, including **James Castle**, **William Edmonson**, and **Bill Traylor**, as well as by contemporary self-taught artists, **George Widener**, **Charles Benefiel**, and **Hipkiss**, among others. The sale includes works from renowned private collections, including **Property from the Marvill Collection**, which features an exquisite selection of vernacular sculpture, and **Property from the Collection of Dr. Kurt Gitter and Alice Rae Yelen**, many of whose offered works were included in the ground-breaking exhibition "Pictured in my Mind" of 1995 at The Birmingham Museum of Art.

Leading the sale is a magnificent limestone sculpture by **William Edmondson**, ***Lion***, circa 1937 (estimate: \$200,000-400,000), which is accompanied by a photographic contact sheet depicting the artist with the sculpture. This work was purchased directly from Edmondson by Alfred and Elizabeth Starr, in whose family it remained in until the 1970s, when it was acquired by the present consignor. The Starrs brought Edmondson to the art world, introducing the artist to famed photographer Louise Dahl-Wolfe, who in turn shared his work with Alfred Barr, then-director of The Museum of Modern Art. Barr later orchestrated a dedicated exhibition to the artist in 1937, MoMA's first solo show for an African American artist.

Highlights | COURAGEOUS SPIRITS: OUTSIDER AND VERNACULAR ART | January 20, 2017



WILLIAM EDMONDSON
(1874-1951), ***Lion***, circa 1937
together with a photographic
contact sheet depicting
Edmondson with *Lion*
limestone
22 in. x 37 1/2 in. x 7 in.
\$200,000-400,000



GEORGE WIDENER (B. 1962)
Megalopolis 123, 2006
ink and paint on pieced and
reinforced paper napkins
26 3/4 x 45 1/8 in.
\$15,000-30,000



WILLIAM HAWKINS
(1895-1989), ***Puma Kitten***,
circa 1985
enamel, glitter and
cornmeal paste on board
\$30,000-50,000



Artist Unknown,
American, Mid-20th
Century, Bust of a
Mustached Man
paint, leather, glass and
composite material on
carved wood
\$10,000-15,000



BILL TRAYLOR (1854-1949)
Brown Dog Charging, 1939-1942
tempera and graphite on repurposed
card, 15 3/4 x 15 3/4 in.
\$25,000-50,000

IMPORTANT AMERICAN FURNITURE, FOLK ART, AND SILVER | JANUARY 20



REMBRANDT PEALE (1778-1860)
George Washington, 1859
\$150,000-250,000

Christie's sale of ***Important American Furniture, Folk Art, and Silver*** will present more than 250 carefully curated lots with exceptional provenance from the 18th through 20th centuries with an emphasis on furniture made in Philadelphia, New York, and Rhode Island. The sale features works previously owned by pioneering collectors of American Furniture, including descendants of **Mrs. J. Insley Blair**, **Mrs. J. Amory Haskell**, and **Edgar William, Bernice Chrysler Garbisch** and **H. Richard Dietrich, Jr.**

Mrs. J. Insley Blair, known as one of the greatest collectors and patrons of American decorative arts, collected during the early 20th century, with a portion of her collection forming the cornerstone of the American Wing at The Metropolitan Museum of Art. In 2006, Christie's was honored to sell part of her collection, left to her daughter **Mrs. J. Woodhull Overton**, which still holds the record for the highest earning private owner collection of American decorative art. Offered in this sale is a continuation of the family's legacy: the auction includes nearly 20 works that Blair left to her second daughter, **Mrs. Screven Lorillard**, including a **Chippendale Part-Ebonized and Inlaid Cherrywood**

Blocked Reverse-Serpentine Desk-and-Bookcase (estimate: \$50,000-100,000), deemed a master piece, and exceptional pieces of Philadelphia and Rhode Island made furniture.

The sale is also highlighted by an **Aesthetic Movement Grand Piano** dated 1882 and documented to George A. Schastey (estimate: \$300,000-500,000). A *tour de force* of design and craftsmanship, this grand piano's art case is a master piece from America's Gilded Age. Signed, dated and documented to George A. Schastey (1839-1894), the piano was the signature work of the recent exhibition on the New York City firm at The Metropolitan Museum of Art.



THE WILLIAM CLARK EXCEPTIONAL
AESTHETIC MOVEMENT METAL-
INLAID SATINWOOD AND CARVED
PURPLEHEART MODEL B GRAND
PIANO
\$300,000-500,000

An exceptional private collection features works by Newport makers, including a **Chippendale Carved Mahogany Fly Tea Table** (estimate: \$80,000-120,000), attributed to the shop of Joseph Sanford (1740-1784). **The Collection of Mr. and Mrs. Thomas B. Rentschler** features classic Philadelphia furniture, including a **Pair of Chippendale Carved Mahogany Side Chairs** (estimate: \$8,000-12,000), once owned by pioneer collector Mrs. J. Amory Haskell.

Federal furniture highlights include exquisite inlaid federal furniture, led by the Isaac Perkins family **Federal Eagle-Inlaid Mahogany Card Table** (estimate: \$30,000-50,000) and a set of **The Coster Family Set of Seven Classical Carved Mahogany Curule-Base Dining Chairs, Attributed to Duncan Phyfe** (estimate: \$50,000-80,000). Fine art highlights are led by a portrait by **Rembrandt Peale (1778-1860) of George Washington, 1859** (estimate: \$150,000-250,000), from **The Jay P. Altmayer Family Collection**.

The sale includes an exemplary selection of Folk Art, including **Ammi Phillips (1788-1865), Portrait of Mary Margaret Deuel** (estimate: \$100,000-150,000), painted circa 1829, and a full-length portrait by **John Brewster Jr. (1766-1854), Young Boy in Red Holding an Apple** (estimate: \$60,000-90,000).

Highlights | IMPORTANT AMERICAN FURNITURE, FOLK ART, AND SILVER | January 20, 2017



A CHIPPENDALE
CARVED MAHOGANY
FLY TEA TABLE
ATTRIBUTED TO THE
SHOP OF JOSEPH
SANFORD (1740-1784),
NEWPORT, 1755-1780
\$80,000-120,000



JOHN BREWSTER JR.
(1766-1854)
*Young Boy in Red Holding an
Apple*
Oil on canvas
\$60,000-90,000



THE COSTER FAMILY SET OF
SEVEN CLASSICAL CARVED
MAHOGANY CURULE-BASE
DINING CHAIRS
ATTRIBUTED TO DUNCAN
PHYFE
NEW YORK, 1810-1815
\$50,000-80,000



A CAST AND PAINTED
ZINC FIGURE OF THE
GODDESS LIBERTY
MARKED BY J.L.
MOTT IRONWORKS
(W. 1876-1902),
EXECUTED IN NEW
YORK, CIRCA 1875
\$30,000-50,000



THE ISAAC PERKINS
FAMILY FEDERAL
EAGLE-INLAID
MAHOGANY CARD
TABLE, PROBABLY NEW
YORK 1800-1815
\$30,000-50,000

IMPORTANT AMERICAN SILVER | JANUARY 20

The afternoon session of the sale features significant American silver spanning 17th through early 20th century. Early American silver highlights of the sale include an extremely rare **pair of candlesticks made in New York by Simeon Soumaine, circa 1750** (estimate: \$100,000-200,000) an important **pair of silver braziers made in Boston by John Burt in 1724** (estimate: \$100,000-200,000), and a **silver wine cup by John Hull and Robert Sanderson**, the first silversmiths in North America which is property of the Old South Church in Boston (estimate: \$150,000-200,000). Wonderful Tiffany examples in the sale include a **silver, mokume and mixed-metal three-piece tea set** from 1878 (estimate: \$40,000-60,000) and a pair of **Chrysanthemum pattern vegetable dishes and covers** (estimate: \$15,000-20,000). A selection of gold in the sale includes a set of **23 18-K gold champagne coupes, circa 1950** (estimate: \$100,000-150,000) and a set of **Reed & Barton gold flatware** (estimate: \$160,000-220,000). Rounding out the sale is a **silver ingot recovered from the shipwreck of the Nuestra Senora de Atocha in 1621** (estimate: \$20,000-30,000).



**A PAIR OF SILVER
CANDLESTICKS
MARK OF SIMEON
SOUMAINE, NEW YORK,
CIRCA 1750
\$100,000-200,000**



**AN IMPORTANT AND RARE PAIR OF
SILVER BRAZIER
MARK OF JOHN BURT, BOSTON, 1724
\$100,000-200,000**



**PROPERTY OF THE OLD
SOUTH CHURCH IN BOSTON
A SILVER WINE CUP
Mark of John Hull and Robert
Sanderson, Boston, circa 1660
\$150,000-200,000**



**A SET OF TWENTY-THREE
18-KARAT GOLD
CHAMPAGNE COUPES
Maker's Mark W, circa 1950
\$100,000-150,000**

PRESS CONTACT: Jennifer Cuminale | +1 212 636 2680 | jcuminale@christies.com
Sara Fox | +1 212 636 2680 | sfox@christies.com

About Christie's

Christie's, the world's leading art business, had global auction, private and digital sales in the first half of 2016 that totalled £2.1 billion / \$3 billion. Christie's is a name and place that speaks of extraordinary art, unparalleled service and expertise, as well as international glamour. Christie's offers around 350 auctions annually in over 80 categories, including all areas of fine and decorative arts, jewellery, photographs, collectibles, wine, and more. Prices range from \$200 to over \$100 million. Christie's also has a long and successful history conducting private sales for its clients in all categories, with emphasis on Post-War & Contemporary, Impressionist & Modern, Old Masters and Jewellery.

2016 marks Christie's 250th anniversary. Founded in 1766 by James Christie, Christie's has since conducted the greatest and most celebrated auctions through the centuries providing a popular showcase for the unique and the beautiful. Click [HERE](#) to view a short film about Christie's and the 250th anniversary.

Christie's has a global presence in 46 countries, with 12 salerooms around the world including in London, New York, Paris, Geneva, Milan, Amsterdam, Dubai, Zürich, Hong Kong, Shanghai, and Mumbai. Christie's has led the market with expanded initiatives in growth markets such as Russia, China, India and the United Arab Emirates, with successful sales and exhibitions in Beijing, Mumbai and Dubai.

**Estimates do not include buyer's premium. Sales totals are hammer price plus buyer's premium and are reported net of applicable fees.*

###

Images available on request

FOLLOW CHRISTIE'S ON:

