

CHRISTIE'S

PRESS RELEASE | NEW YORK | FOR IMMEDIATE RELEASE: MAY 2017

CHRISTIE'S AMERICAN ART

LIVE AUCTION: MAY 23 | ONLINE AUCTION: MAY 17-24



Frederic Remington (1861–1909)
Coming Through the Rye
Bronze with brown patina; 30 ¼ in. (76.8 cm.) high
Modeled in 1902; cast by 1906.
Estimate: \$7-10 million

New York – Christie's announces the spring season of American Art, with a live sale taking place on May 23 and a concurrent online sale from May 17-24. The season is led by distinguished private collections and fresh to the market works, notably Property from the Estate of Richard J. Schwartz, which includes the top lot of the sale, a rare bronze by Frederic Remington, *Coming Through the Rye* (estimate: \$7-10 million), as well as two spectacular examples of Albert Bierstadt's dramatic landscapes, and a nationalistic painting from Childe Hassam's famed flag series. The sales offer a strong selection of Impressionist, American West, and 19th century masterpieces across painting and sculpture showcasing the best of each genre. With 92 lots in the live sale and 113 lots in the online sale, the combined pre-sale estimate is in excess of \$38 million.

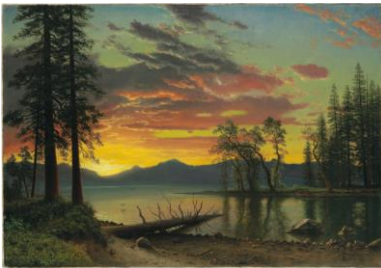
Eric Widing, Deputy Chairman, remarks: "We are honored to be offering cast number 3 of Remington's iconic bronze, *Coming Through the Rye*, an archetype of the American West and a work that has been appreciated for over a century, influencing generations of artists. It has been in the collection of Richard J. Schwartz since 1978, alongside the other patriotic works in his collection, such as Hassam's *Just Off the Avenue, Fifty-Third Street, May 1916*, the first of what would become his celebrated series of flag paintings. This is a connoisseur's collection which is imbued with fine examples that portray the enduring and optimistic American spirit."

PROPERTY FROM THE ESTATE OF RICHARD J. SCHWARTZ

The sale is led by the collection of Richard J. Schwartz (1938-2016), who was a public advocate for the arts and education. He served on and later chaired the New York State Council for the Arts, in addition to providing leadership to regional arts councils in Westchester and the Hudson Valley. He served on many museum boards, as well as the boards of hospitals, schools and universities, and he also supported several notable restoration projects for civic monuments in Manhattan and Brooklyn.

The top lot of the sale from the Schwartz collection is the early cast of **Frederic Remington's** most daring and complex sculptural undertaking, ***Coming Through the Rye***, modelled in 1902 and cast by 1906, which captures the spirit of the artist's iconic depictions of the American West. Collected by the nation's leading institutions from the moment it was created, the work is not only remarkable for its artistic and technical virtuosity, but has truly become an archetype of the American West and of the cowboys that inhabited it. Of the located life-time casts of the sculpture, only two are known to be in private collections, and this is the first time this work is being offered at auction.

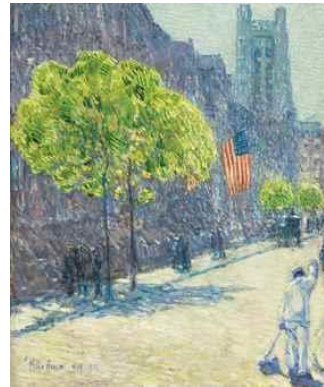
Other highlights among the 33 lots included in the Schwartz collection are **Saint-Gaudens'** celebrated *Victory* and a famed portrait relief of Robert Louis Stevenson, as well as **Albert Bierstadt's** epic *Lake Tahoe*, **Childe Hassam's** early street scene with flags, and a portrait by **William Merritt Chase**.



Albert Bierstadt (1830–1902),
Twilight, Lake Tahoe,
c. 1870s.
Estimate: \$3-5 million



William Merritt Chase (1849-1916)
Portrait of My Sister (Hattie)
Painted in 1886.
Estimate: \$2-3 million



Childe Hassam (1859-1935)
Just Off the Avenue, Fifty-Third Street, May 1916
Estimate \$2-3 million



Augustus Saint-Gaudens
(1848-1907)
Victory
Modeled in 1912.
Estimate: \$600,000-800,000

HIGHLIGHTS OF VARIOUS PRIVATE COLLECTIONS



Property from the Collection of
Chauncey D. Stillman sold to
benefit the Wethersfield Foundation
Gilbert Stuart (1755-1828)
*George Washington (Vaughan
type)*
Painted circa 1795.
Estimate: \$1.5-2.5 million



Property from the Collection of
Chauncey D. Stillman sold to
benefit the Wethersfield
Foundation
Mary Cassatt (1844-1926)
*Girl in a Bonnet Tied with a
Large Pink Bow*
Painted in 1909.
Estimate: \$2-3 million



Property Formerly In The
Collection Of Hunt
Henderson, New Orleans
James McNeill Whistler
(1834-1903)
The Yellow Room
Executed circa 1883-84.
Estimate: \$500,000-700,000



Property Sold to Benefit The
Motion Picture and Television
Fund
Norman Rockwell (1894-1978)
*Judy Garland as Dorothy in the
Wizard of Oz*
Painted in 1969-70.
Estimate: \$200,000-300,000



Property from the Collection of Esther and Howard Freeman, Worcester, Massachusetts
Winslow Homer (1836-1910)
The Shell Heap
Executed in 1904.
Estimate: \$2.5-3.5 million



Maxfield Parrish (1870-1966)
The Young Gleaner
Painted in 1896.
Estimate: \$1-1.5 million



Property From A Distinguished New England Collector
Fairfield Porter (1907-1975)
Sun Rising Out of the Mist
Painted in 1973.
Estimate: \$400,000-700,000



Property from the Collection of Frederick and Dorothy Rudolph
Milton Avery (1885-1965)
Yellow Meadow
Painted in 1955.
Estimate: \$600,000-800,000

AMERICAN ART ONLINE | MAY 17-24

The American Art online sale, held from May 17-24, will feature works spanning the spectrum of American Art, from Modernism and 20th Century Realism by Milton Avery and Andrew Wyeth to classic examples of Impressionist and 19th Century paintings by Childe Hassam and Albert Bierstadt. Other highlights include works by Charles Burchfield, Harriet Frishmuth, and Grandma Moses, among others.



Charles Ephraim Burchfield (1893-1967)
June Wind
Executed in 1955.
\$120,000-180,000



Property from the Estate of Dr. Gerald F. Ross
Newell Convers Wyeth (1882-1945)
"As He Sat in the Doorway Looking at the Storm He Realized that He was Shaken by a Wild, Crude Lyric of Passion"
Painted in 1908.
Estimate: \$100,000-150,000



Harriet Whitney Frishmuth (1880-1980)
Joy of the Waters
Modeled in 1920.
Estimate: \$50,000-70,000



Property from the Estate of Dr. Gerald F. Ross
Milton Avery (1885-1965)
Stella in Red
Executed in 1945.
Estimate: \$70,000-100,000

Notes to Editors:

- The vast majority of the extant lifetime casts of **Frederic Remington's *Coming Through the Rye*** are in the collections of some of the country's most preeminent institutions, including: no. 2 in the Princeton University Art Museum, Princeton, New Jersey; no. 4 in the Gilcrease Museum, Tulsa, Oklahoma; and no. 7 in the Buffalo Bill Center of the West, Cody, Wyoming. In addition to these, there are unnumbered lifetime casts in the collections of the Corcoran Collection, National Gallery of Art, Washington, D.C., and the Art Institute of Chicago, Illinois. Of the eight authorized examples cast after Remington's death, editions can be found in the Stark Museum, Orange, Texas; the Amon Carter Museum, Fort Worth, Texas; the National Cowboy Hall of Fame, Oklahoma City, Oklahoma; the Frederic Remington Museum, Corning, New York; and The White House, Washington, D.C.

PRESS CONTACT: Sara Fox | 212-636-2680 | sfox@christies.com

Public Exhibition:
May 20-22

Auctions:
American Art
23 May 2017, 10am

American Art Online
17-24 May 2017

About Christie's

Christie's, the world's leading art business, had global auction, private and digital sales in 2016 that totalled £4 billion / \$5.4 billion. Christie's is a name and place that speaks of extraordinary art, unparalleled service and expertise, as well as international glamour. Christie's offers around 350 auctions annually in over 80 categories, including all areas of fine and decorative arts, jewellery, photographs, collectibles, wine, and more. Prices range from \$200 to over \$100 million. Christie's also has a long and successful history conducting private sales for its clients in all categories, with emphasis on Post-War & Contemporary, Impressionist & Modern, Old Masters and Jewellery.

Christie's has a global presence in 46 countries, with 11 salerooms around the world including in London, New York, Paris, Geneva, Milan, Amsterdam, Dubai, Zürich, Hong Kong, Shanghai, and Mumbai.

**Estimates do not include buyer's premium. Sales totals are hammer price plus buyer's premium and are reported net of applicable fees.*

###

Images available on request

FOLLOW CHRISTIE'S ON:

